

# UNIT 174 EVENTS & CLASSES March 2022



## **Welcome to March 2022 Unit 174 Events and Classes Newsletter.**

Spring is here! Time to get out and enjoy the weather and see all your fellow bridge players. If you are lucky enough to go to Reno this month we hope you have good luck and lots of fun.

The purpose of this newsletter is to tell you about any special events happening in the bridge world that affect you and to make you aware of the learning opportunities offered by Unit 174 clubs and bridge instructors.

Plus, each month, we bring you an interesting hand and/or a video from our local and prolific bridge wizard Jeff Kroll and an online bridge class for beginners from Robert Hanley of Durham DBC.

Please send us your class schedules, special event news, and links by the 25th of the month. This newsletter is published on the 1st of each month.

The unique email associated with this newsletter is [unit174classandevents@gmail.com](mailto:unit174classandevents@gmail.com).

Jeanne Phelps and Chris Duncan  
Co-Editors

**For more information about what is happening locally, go to the Unit 174 web page [acblunit174.org](http://acblunit174.org).**

# UNIT 174 SPECIAL EVENTS

## MARK YOUR CALENDERS!

Thank you to all the volunteers and players that make Unit 174 Tournaments successful! We could not do this without you.

If you would like to volunteer to help with Unit 174 events and projects, call Karen Nussbaum at [karenenuss@gmail.com](mailto:karenenuss@gmail.com).



Unit 174 Proudly Presents the  
2022  
April 8th thru 10th  
Election Sectional



☕ Coffee

Vote one hour prior to each session on Fri/Sat and Sunday morning

**ARABIA SHRINE CENTER**

10510 Harwin Dr,  
Houston, TX 77036



**Stratification**

Stratified Open Pairs  
A:3000+ X:750-3000 Y:0-750

Stratified 299'r Pairs  
B:200-300 C:100-200 D:0-100

Bracketed Swiss  
Brackets of 7-9 teams



**Table Fees**

Friday/Saturday: \$ 13 (\$4 more for lapsed members)  
Sunday: \$ 15 (Sunday lunch included)

**SPRINGHILL SUITES by Marriott**  
5851 Rogerdale Rd, Houston, TX 77072  
(832) 300-0200 - Room Rate \$79 (AARP Discount)

**HOUSTON MARRIOTT WESTCHASE**  
2900 Briarpark Dr., Houston TX 77042  
(713) 978-7400 - Room Rate: \$99

**Covid Safety**

See Unit 174 website ([acblunit174.org](http://acblunit174.org))  
for latest guidelines

**Playing Schedule**

**Friday and Saturday, Apr 8 & 9th**

Stratified Open Pairs	10 & 2:30
Stratified 299'r Pairs ( <i>single sessions</i> )	10 & 2:30
Side Game ( <i>single sessions</i> )	10 & 2:30
0- 20 Apollo pairs ( <i>Fri &amp; Sat Only</i> )	10
Bracketed Swiss	10 & 2:30

**Sunday, Apr 10th**

Stratified Open Pairs ( <i>single sessions</i> )	10 & 2:30
Stratified 299'r Pairs ( <i>single sessions</i> )	10 & 2:30
Bracketed Swiss	10 & 2:30

Unit 174 annual meeting between sessions  
Proposed bylaw change to be voted on  
by our membership

**Election Results & Awards (10 min) 2:20**

**Tournament Chairs**

<p><b>Kathy McDougall</b> <i>katmac432@hotmail.com</i> (832) 876-9516</p> <p><b>Hospitality Chair</b> Karen Nimmons <i>kjnimmons@sbcglobal.net</i></p> <p><b>I/N Chair</b> Betty Westbrook <i>bwestbrook@marketciences.com</i> (713) 851-0026</p>	<p><b>Charles Dalton</b> <i>cdinc35@aol.net</i> (713) 861-3399</p> <p><b>Partnership</b> Carol Jewett <i>Pm8ck@aol.com</i> (713) 517-7436</p>
---	---

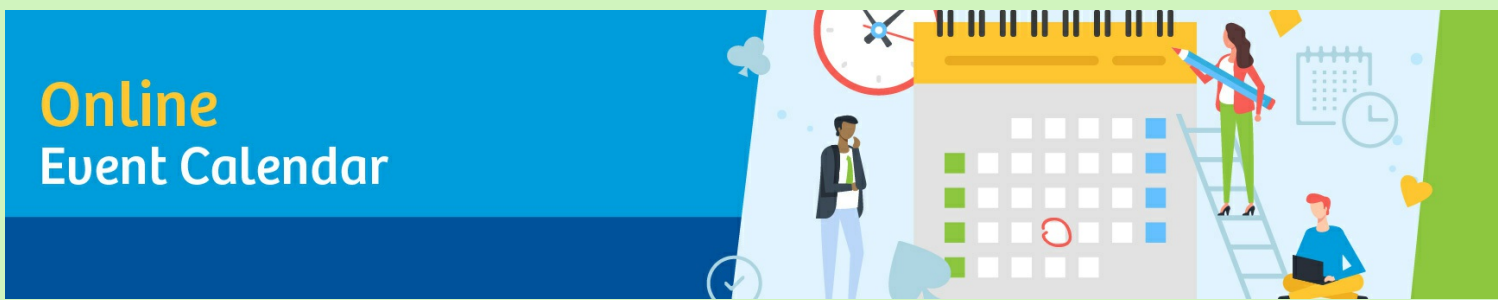


Guest Speakers - 2:00 Friday and Saturday

Friday: **Joe Quinn**      Be Scent-sitive      Saturday: **Vinh Tran**

# ONLINE SPECIAL EVENTS

## Online Event Calendar



### Coming up in March-

**5-7 NABC Robot Individual**  
**24-27 Spring Online Regional**

You do not need to do anything special to participate in these games; any game in the Virtual Clubs will be automatically included.

Every month on the ACBL website there is a list of special online games offered. To find what special online games will be available click [here](#).

## ESPECIALLY FOR NEWCOMERS



**Come Play with Us!**

### **FLM Schedule for the On-Line Games:**

- Apollo - 0-20 MPs - Tuesday - 3:05 pm - Houston U174FLM Apollo 0-20 Assisted Play
- Apollo - 0-20 MPs - 2nd Saturday - 9:00 am - Houston FLM Apollo 0-20 Assisted Play & Board Review
- Gemini - 0-50 - Monday - 4:00 pm - D16 0-50 FLM Gemini
- Discovery - 0-99 - Tuesday - 2:45 pm - ChooseHouston FLM Discovery
- Discovery - 0-99 - Thursday - 2:45 pm - ChooseHouston FLM Discovery

**We Encourage All of our Newcomers to Join Us!**

To learn more about our FLM Playing Groups, CLICK HERE: [Future Life Masters](#)

# DISTRICT 16 GAMES FOR NEW PLAYERS

## District 16 Daily 0-99ers Games with Pre & Post Lessons and Analysis

District 16 offers our 99ers a game just for them - the "99er Nite Club"! These games are offered 7 days a week at 6 pm. If you are a 99er, ask your Club if they are participating. Your Club has to "opt-in" for these games to participate. If your Club has any questions, ask them to contact Nancy Strohmer, [nastrohmer@yahoo.com](mailto:nastrohmer@yahoo.com).

District 16 wants every 99er to have the opportunity to play as much as possible and have the best experiences. There are extra perks of this game--Lynn Berg provides mini-lessons @ 5:30 pm, a wide variety of professionals (including Larry Cohen) conduct a postmortem at about 7:30 pm and these are bigger games offering more masterpoints!

### **New to duplicate bridge? Try the 0-50 MPs game.**

Welcome to the bridge family! District 16 is offering to all 0-50 masterpoint players a 12 board game on BBO for \$3 every Monday at 4:00. You can ask a partner to play or sign in at the partnership desk and pick up a new partner.

Practice, practice, practice -- your experiences at the table can be your best teacher. A director and assistants will be on hand to offer guidance during the game.

### **OK, I think I'm getting it— Stretch up to the 0-99 masterpoint game!**

District 16 offers our 99ers a game just for them - the "99er Nite Club"! These games are offered 7 days a week at 6 pm. If you are a 99er, ask your Club if they are participating.

Your Club has to "opt-in" for these games to participate. If your Club has any questions, ask them to contact Nancy Strohmer, [nastrohmer@yahoo.com](mailto:nastrohmer@yahoo.com).

We want every 99er to have the opportunity to play as much as possible and have the best experiences. There are extra perks of this game - Lynn Berg provides mini-lessons @ 5:30 pm, and these are bigger games offering more masterpoints!

For the comprehensive newcomer game schedule. [CLICK HERE](#).



Contact information is also provided if you have questions.

To see original information go to the District 16 Web Page: [ACBL District 16 Home Page](#)

## BRIDGE CLASSES OFFERED

### BRIDGE CLUB OF HOUSTON

#### Monday Morning with Bill

Bill Riley will give a series of lectures on various bridge topics. These topics are geared to the advanced beginner and the intermediate player. However, they are open to all. In addition to those specified below, other topics will include: Transfers, Interfering with the Opponents opening 1NT, Doubles, Nuances of 2/1, to name just a few.

March 7th,	10:30 AM Opening Leads for Suit & NT contracts
March 14th,	10:30 AM Hand Evaluation
March 21st,	10:30 AM Basic 2/1
March 28th	No Session

Nominal Fee \$2 per session

Bill Riley is a Diamond Life Master, certified ACBL director, and an outstanding and entertaining teacher. Having taught Pediatrics for 40 years, he is now teaching bridge.

#### Tuesday Mornings with Julie Halperin

We are bringing back the 0-50 game Tuesday mornings beginning March 22nd. Julie Halperin will give a free lesson (open to all) from 9:30 to 10:10. The game begins at 10:30. The game fee is \$5.00. We will set up partnerships for those who need it. Text Julie at 713-857-8004 with questions or concerns.

---

### CLEAR LAKE BRIDGE CLUB

#### Dave Glandorf

#### Bridge 100BL:

Every Sunday and Tuesday, 2-5 pm.

Fee - \$8 per session. No advance registration is needed.  
These are informal "Bridge Lab" courses. They are pay-as-you-go practice courses in a monitored rubber-bridge type of environment. Students may ask questions of a monitor during or after the bidding or play.

For the following classes, there may also be a materials surcharge fee for shipping if needed.

**Bridge 100B:**

Mondays 6:45 - 9:45 pm, January 10 - April 11 or  
Thursdays 2-5 pm, January 13 - April 14  
(Two identical but separate classes.)

Tuition - \$175, Materials - \$35

This 13-week beginner course is an introduction to Bridge with an emphasis on card play.

**Bridge 101A:**

Mondays 2-5pm, Jan 10 - Apr 11

Tuition - \$175, Materials - \$35

This 13-week beginner course is the first in a series of two courses covering the basics of bidding.

**Bridge 100PA:**

Tuesdays 6:45-9:45pm, Jan 11 - Apr 12

Tuition - \$175, Materials - \$21

This 13-week beginner course is the first in a series of two practice courses covering bidding, play, and defense.

**Bridge 110:**

Wednesdays 2-4:30 pm, Jan 12-Mar 23

Tuition - \$150, Materials - \$20

This 10-week course covers the basics of the 2/1 Game Force bidding system modifications to the standard 5-card major system.

**Bridge 140:**

Thursdays 9 am-noon, March 3 - March 24

Tuition - \$75, Materials - \$45

This 4-week course focuses on slam bidding.

Contact Dave Glandorf for more information:

[dr glandorf@sbcglobal.net](mailto:dr glandorf@sbcglobal.net) 281-488-6318 (home) or 713-628-0030 (cell)

## **Beginning Bridge and afternoons Supervised Play.**

Beginning January 24 thru May 2nd.

Mondays, from 1:00-3:00pm

Fee: \$10 per session

St Martin's Episcopal Church, 717 Sage Rd., at Woodway

After May 2022 Beginning Bridge and afternoons Supervised Play will resume in September 2022.

For more information, contact Tom Jahnke  
at [tomtomj211@yahoo.com](mailto:tomtomj211@yahoo.com) or 713-824-0693

---

## **THE LONE STAR BRIDGE CLUB**

We will be starting a series of six Bridge Classes for Beginners on Tuesday, February 1st, 2022. Classes will be from 10 am to Noon at the St. Paul United Methodist Church, 1100 Semands Drive, in Conroe, Texas. Classes are \$5.00 each, or all six lessons for \$25.00. The lessons will be taught by Linda Sutton, a Gold Life Master.

For more information, contact Linda Sutton, [lindasutton212@gmail.com](mailto:lindasutton212@gmail.com).

Proof of COVID vaccination is required.

~~~~~

Ongoing free lessons are on the first Monday of every month with DLM Jeff Kroll. Lessons are from 11 am to 11:45, followed by an OPEN bridge game at Noon. The March lesson will be March 7th and will include:

1. When to penalty double at IMPS vs Matchpoints
2. How to identify a likely singleton lead when you're declaring

---

## **BEGINNING BRIDGE WITH SAM KHAYATT**

This course will run on BBO and Zoom at **9:00 AM on Saturdays from March 5 to May 28.**

The course includes 12 BBO/Zoom lessons, three BBO supervised play-sessions, and one technology warm-up. We are also planning

(but have not yet confirmed) three F2F supervised play-sessions.

The Technology Warm-up and the first lesson are **FREE** of charge. Come check out "Bridge over Breakfast"!

- Link to flyer:  [https://www.bridgewebs.com/cgi-bin/bwop/bw.cgi?club=bcoh&pid=docs\\_BeginningBridge.pdf](https://www.bridgewebs.com/cgi-bin/bwop/bw.cgi?club=bcoh&pid=docs_BeginningBridge.pdf)
- **FREE!** Technology warm-up on **Friday, March 4 at 7:00 PM:**  <https://us02web.zoom.us/j/84288204920?pwd=NIBtZk1TRkNMTThlQnVjZUItYnBCZz09>
- **FREE!** First lesson on **Saturday, March 5, at 9:00 AM:**  <https://us02web.zoom.us/j/82979498423?pwd=VHVrNG9jN2duZmpucUVRVWk4Z05LUT09>

For more information or to register, please email Sam at [4NoTrumpLessons@gmail.com](mailto:4NoTrumpLessons@gmail.com) .

---

## JOYCE RYAN AT ST JOHN THE DIVINE AT WESTHEIMER AND RIVER OAKS BLVD

**JUDGMENT DOUBLES:** March 15 to April 5 (4 weeks) Tuesdays 10 to 12

This course helps the player develop tools for improving judgment in using the takeout, balancing, negative, and other doubles as well as advancing the double.

You will learn/review the Take out Double; Negative Double; Responsive Double; Support Double; Penalty Double. Book availability from Instructor: \$15

**ADVANCING PLAYER 1:** March 15 to April 5 Tuesdays 1:00-3:00

The class will focus on most play techniques including counting losers/winners, promotion, long-suit development, finesses, trump management, managing entries, and more. We will review bidding including opening bids of no trump, major suits and minor suits, responders bids, opener's rebids, and responders rebids as well overcalls and take out doubles and responses. Defense is stressed with opening leads, signals, and giving count. Play 8 hands each session and each class will emphasize bidding, play and defense. No Book

The cost of a course is \$100.

For more information, contact Joyce at [joyceryanbridge@gmail.com](mailto:joyceryanbridge@gmail.com).

---

## THOMAS RUSH ONLINE BRIDGE CLASSES

**Intermediate or Advanced Pairs Workshop on BBO**



Scheduled according to your calendar, online  
Two-hour sessions designed for a partnership, \$100/pair/session.

I've been running these very successful sessions with a limited group and am ready to roll it out to more people. In these two-hour online sessions, we'll set up a teaching room on BBO with audio for one or two pairs, with me working as a coach to help you analyze auctions declarer play and defense at a higher level.

Because we're playing online, we can discuss a hand immediately after and replay it to see the benefit of different bids or order of play. We can also give you practice on particular conventions or types of hands - it's really up to the people in each particular class!

For more information, or to register, contact Thomas Rush at 832-228-7835 or email [PlayBridgeWithThomas@gmail.com](mailto:PlayBridgeWithThomas@gmail.com).

### **Intermediate/Advanced Defense on BBO**

Times according to your schedule! Six 60 - 90 minute sessions over six weeks. \$180/person individual, \$150/person for you and a regular partner as a pair.

In this class, we'll talk about how to take your defense to the next level: communicate legally with your partner and thwart declarer's plans!

We'll cover defensive planning and signaling in-depth: Selecting the right opening lead; How to use count and attitude signals; Suit preference signals throughout the hand; Better first discards, and more. You're on defense half the time - make the most of it!

For more information, or to register, contact Thomas Rush at 832-228-7835 or email [PlayBridgeWithThomas@gmail.com](mailto:PlayBridgeWithThomas@gmail.com).

---

## **2/1 Bidding with Joe Quinn 2 time National Champion**



- **Simple Squeezes**
- **Double Squeezes**
- **Strip Squeezes**

This course will provide students with improved methods for executing squeezes to achieve better results. This series is geared to intermediate and advanced students and will create a solid foundation for this important area of the game.

Six Tuesdays 1:30 PM - 3:30 PM  
 May 4, 11, 18, 25 & June 1 and 8  
 \$200.00 for the series

On-line via Internet

Reserve your space today!  
 Sign by email [valquinn1950@gmail.com](mailto:valquinn1950@gmail.com)  
 Or text 713-444-5034

## INTERESTING BRIDGE HANDS

### ASK JEFF by Jeff Kroll

#### Video of a class given by Jeff Kroll

Part II - Lesson on Matchpoints vs IMPs: [Jeff Kroll Feb 7, 2022](#)

#### Hand Played for IMPS by Jeff Kroll

When playing for IMPS you should bid on those close vulnerable games and then figure out the best plan to make them. Here is how we played this game:

|    |       |     |  |      |     |
|----|-------|-----|--|------|-----|
| 10 | 3NTS= | 600 |  | 10.6 |     |
| 11 | 3NTS= | 400 |  | 7.4  |     |
| 12 | 2♠E-2 | 100 |  | 4.1  |     |
|    |       |     |  | 49.7 | 5.1 |

The screenshot shows a bridge hand interface with the following details:

- North (Robot):** ♠A3, ♥Q75, ♦QJ543, ♣983
- West (Robot):** ♠KJ94, ♥K982, ♦K97, ♣Q5
- East (Robot):** ♠8762, ♥J104, ♦82, ♣K642
- South (texashen):** ♠Q105, ♥A63, ♦A106, ♣AJ107
- Bidding:** Pass, 2♣, Pass, 2♦, Pass, 2NT, Pass, 3NT, Pass, Pass, Pass
- Score:** 3NT South, 0-0

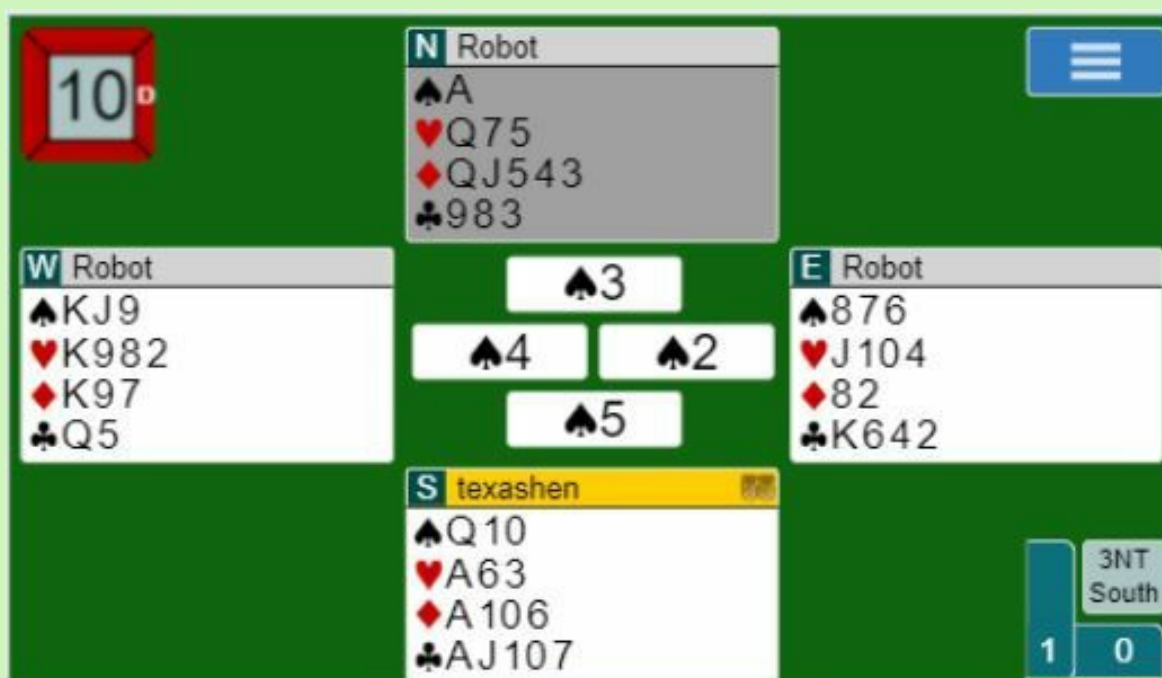
### Bidding Explanation:

- S 1NT - (15 HCP)
- N 2C (Staymen - even without a 4 card major, looking to invite 3NT on the next bid. Some play this and some don't. We prefer 2NT to invite.) note: Transferring into a minor requires 6 cards in the minor.
- S 2D (no 4 card major)
- N 2NT (9 hcp, may not have a 4 card major)
- S 3NT (yeah! 15 hcp on the bottom of the 1NT bid range and a pancake-flat hand - the worst distribution possible, but I do have 3 aces and 3 useful 10's. For the 3 aces, I add 1 point, and for the 3 useful 10's, I add a point. That would get us to 17 points, But pancake-flat hands hurt our trick-taking ability - so I call it a 16 point hand.)

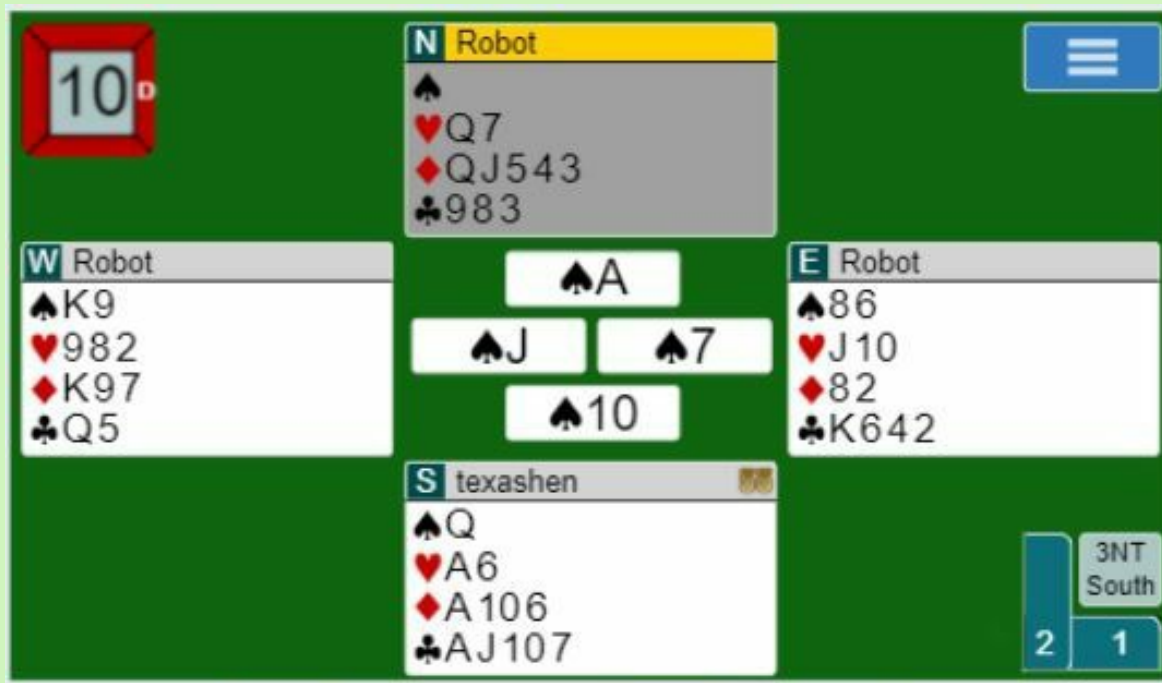
This is an easy 3NT bid at IMPS and a marginal 3 NT bid at matchpoints.

### Play:

West leads the 4 of spades, and we win the 5 - always fun.



We play a low heart to the Queen of hearts, hoping to make 2 heart tricks and to create an entry to dummy. West wins and plays another spade to the ace.



We take the losing diamond finesse. West cashes the 2 high spades. But that's it for the defenders

We have the rest of the tricks. Making.

2 spades

2 hearts

4 diamonds

1 club

for 9 total tricks.

The defense got:

2 spades

1 heart

1 diamond

By making our vul game we earned 10.6 IMPS. If we had gone down it would have cost us 4 IMPS. That's why we just need a fighting chance to make a vul game in IMPS to bid it. At matchpoints, it needs to be a 50%+ chance to bid the game. Maybe this is a 50% game for optimists.

## 2 Beginner Games - Results and Video by Robert Hanly's Durham DBC

Every week Robert Hanley of the Durham DBC takes two hands from his beginner games and shows how he would have bid and played the hand. Please note that he uses a BBO screen to show his solution so be aware of the positions in BBO, they may or may not match the hand record. This month's example is from his Feb 8th 199er game.

Here is the link for the results:

<https://my.acbl.org/club-results/details/484372>

Here is the link for the video:

<https://share.vidyard.com/watch/RG9QGVWoigY6dXHLTqRMaZ?>

Dir: S 7  
Vul: Both

|      |             |
|------|-------------|
| 5    | ♠ 8 7       |
| 4 18 | ♥ 7 6 3 2   |
| 13   | ♦ J 6       |
|      | ♣ K J 9 8 4 |

|            |             |
|------------|-------------|
| ♠ Q 10 6 5 | ♠ A J 9 4 3 |
| ♥ Q 10     | ♥ A K 9     |
| ♦ 4 3 2    | ♦ 9 7       |
| ♣ 10 7 3 2 | ♣ A Q 5     |

|                |
|----------------|
| ♠ K 2          |
| ♥ J 8 5 4      |
| ♦ A K Q 10 8 5 |
| ♣ 6            |

## Hand 7- A Strong hand always overcalls as a double

### Bidding

| S  | W | N  | E  |
|----|---|----|----|
| 1D | P | 1H | X  |
| 2H | P | P  | 2S |
| P  | P | P  |    |

Robert is playing E. In this example, he makes 3S for MP of 13 tables. the winning hand in the EW direction.

How the other players did:



## Board 7

| Contract | Lead | Result | Score |      | Matchpoints |       |
|----------|------|--------|-------|------|-------------|-------|
|          |      |        | N-S   | E-W  | N-S         | E-W   |
| 3♣ E     | ♦A   | -1     | 100   | -100 | 11.00       | 2.00  |
| 4♣ E     | ♣6   | -1     | 100   | -100 | 11.00       | 2.00  |
| 4♣ E     | ♦A   | -1     | 100   | -100 | 11.00       | 2.00  |
| 4♣ E     | ♦A   | -1     | 100   | -100 | 11.00       | 2.00  |
| 4♣ E     | ♦A   | -1     | 100   | -100 | 11.00       | 2.00  |
| 3♦ S     | ♣Q   | -1     | -100  | 100  | 8.00        | 5.00  |
| 2♣ E     | ♦A   | =      | -110  | 110  | 7.00        | 6.00  |
| 1♣ E     | ♦A   | +2     | -140  | 140  | 3.50        | 9.50  |
| 2♣ E     | ♦A   | +1     | -140  | 140  | 3.50        | 9.50  |
| 2♣ E     | ♦A   | +1     | -140  | 140  | 3.50        | 9.50  |
| 2♣ E     | ♣6   | +1     | -140  | 140  | 3.50        | 9.50  |
| 3♣ E     | ♦A   | =      | -140  | 140  | 3.50        | 9.50  |
| 3♣ E     | ♦A   | =      | -140  | 140  | 3.50        | 9.50  |
| 3♣ E     | ♣6   | +1     | -170  | 170  | 0.00        | 13.00 |

## Hand 9 - Cuebidding

Bidding

|    |    |    |    |
|----|----|----|----|
| N  | E  | S  | W  |
| 1S | 2S | 3S | P  |
| P  | 2D | P  | 4H |
| P  | P  | P  |    |

|           |    |             |  |
|-----------|----|-------------|--|
| Dir: N    |    | <b>9</b>    |  |
| Vul: E-W  |    | ♠ 9 8 6 5 4 |  |
|           | 11 | ♥ 4         |  |
| 3         | 19 | ♦ K 6       |  |
|           | 7  | ♣ AKJ 6 3   |  |
| ♠ Q 10 3  |    | ♠ K 7       |  |
| ♥ J 9 8 2 |    | ♥ AKQ 7 3   |  |
| ♦ 7 3 2   |    | ♦ AQJ 9 8   |  |
| ♣ 10 7 4  |    | ♣ 8         |  |
|           |    | ♠ AJ 2      |  |
|           |    | ♥ 10 6 5    |  |
|           |    | ♦ 10 5 4    |  |
|           |    | ♣ Q 9 5 2   |  |

With a strong hand in an overcall position, Robert's partner(E) uses a variation of the Micheals Cuebid - called the mini-maxi in Micheals. The partner's second bid of 2D shows Robert that she has a strong hand.

"The Michaels cuebid is a conventional bid[1] used in the card game contract bridge. First devised by Michael Michaels of Miami Beach, FL, it is an overcaller's cuebid in opponent's opening suit and is normally[2] used to show a two-

suit hand with at least five cards in each suit and eight or more points. After the opponents have opened at the one-level, the overcaller bids the same suit at the two-level; the two normal cases are:

1. Over an opponent's minor opening, a cuebid shows both majors. For example, 1♣ - 2♣ shows hearts and spades.
2. Over an opponent's major opening, a cuebid shows the other major and a minor suit. For example, 1♠ - 2♠ shows hearts and either clubs or diamonds. Partner can make a 2NT relay bid to request partner to bid his minor suit, or a 3♣ pass-or-correct bid."

In a common variant, known as Mini-Maxi Michaels, candidate hands are classed into three ranges, and Michaels is applied more selectively: Initially, partner should assume a weak hand by the Michaels bidder; with a strong hand, the Michaels bidder will follow with a second non-forced call.

For more details about play criteria see [Michaels cuebid - Wikipedia](#)

Also, note that a lead of 2S limits the opponent to 11 H while leading the AS they can make 12H

## Board 9

| Contract | Lead | Result | Score |     | Matchpoints |       |
|----------|------|--------|-------|-----|-------------|-------|
|          |      |        | N-S   | E-W | N-S         | E-W   |
| 4♣ N     | ♥A   | -1     | -50   | 50  | 13.00       | 0.00  |
| 4♣ N     | ♦A   | -2     | -100  | 100 | 11.50       | 1.50  |
| 4♣ N     | ♥A   | -2     | -100  | 100 | 11.50       | 1.50  |
| 4♣ N     | ♥A   | -3     | -150  | 150 | 10.00       | 3.00  |
| 3♥ E     | ♣2   | +1     | -170  | 170 | 9.00        | 4.00  |
| 3♥ E     | ♣A   | +2     | -200  | 200 | 8.00        | 5.00  |
| 3♥ E     | ♣A   | +3     | -230  | 230 | 7.00        | 6.00  |
| 4♥ E     | ♣A   | +1     | -650  | 650 | 4.00        | 9.00  |
| 4♥ E     | ♣Q   | +1     | -650  | 650 | 4.00        | 9.00  |
| 4♥ E     | ♣2   | +1     | -650  | 650 | 4.00        | 9.00  |
| 4♥ E     | ♣2   | +1     | -650  | 650 | 4.00        | 9.00  |
| 4♥ E     | ♣2   | +1     | -650  | 650 | 4.00        | 9.00  |
| 4♥ E     | ♣A   | +2     | -680  | 680 | 0.50        | 12.50 |
| 4♥ E     | ♣A   | +2     | -680  | 680 | 0.50        | 12.50 |

***"NOTHING IS IMPOSSIBLE  
THE WORD ITSELF SAYS  
I'M POSSIBLE!"  
- Audrey Hepburn***

