

# American Contract Bridge League District 16 SCORECARD

Bridge News Bulletin for The Texas Regional Conference

San Antonio, Texas Volume 53 No 3 May/June 2020

## The Longest Winter

On June 21 the District is usually alive with many games supporting the Longest Day. Sadly, the world is figuratively experiencing an extended winter. Bridge has experienced a temporary setback as we prepare to open up and we will have to proceed cautiously.

As I write this it is 40 days since the Kerrville sectional which ended on Sunday March 15. Just 5 days before that I talked to my 5 partners for The Columbus NABC. They were all still eager to go. By March 12 the tournament was canceled. Then, quickly, many tournaments were cancelled and just as soon the bridge clubs went in to hiatus. Now often it takes a blackout to realize how quickly we miss TV and/or the internet. Many of us realize how much we miss the bridge. Whether you play daily, once a week we ALL SEE SOMETHING IS MISSING.

There is much concern how bridge will continue as the country opens up. Dr Brady Allen gives us excellent advice on page 3.

Now if you noticed it or not bridge really thrives because of the dedicated volunteers. I have seen ebbs and flows in attendance in my 50 years as a bridge player but it always comes back strong as soon as a need is realized. A former ACBL CEO reported

a few years ago that if we had to pay our volunteers our dues would be \$400 a year. I play a lot of Backgammon and have seen the game virtually disappear at times and it always comes back strongly when a dedicated organizer meets the challenge. Such will be the case with bridge. From my vantage point we have terrific people throughout the District that will lead us through. We can all help.

While the clubs have had to board up remember that they still have their bills. With help of BBO many clubs have run their daily games online with masterpoints. We have included some directions from some websites to help you get online. Remember to check your local club online for information but pretty much the protocol is identical. It seems that local club games are usually for unit members only although some let their players play with outliers. The rather modest entry fees are mostly returned to the clubs and/or the ACBL and I hope many of you will participate.

As we reach the end of April the world is opening up with caution. Bridge will come back, both at the clubs and at tournaments.

Now I play a lot more backgammon online than bridge. It has its place but

when I go to the live games I assure you there is nothing like it. Backgammon is identical to bridge to me in the social aspect. Anywhere I go from coast to coast for backgammon or bridge I have such joy in seeing my many friends. At tournaments we have many dinners and after game social activities with friends at both activities. It will return

We have updates on all the cancelled tournaments but keep in mind that things can rapidly change. As parts of the country open up the rest will see how safe it is and that may either close more down or open things up. This issue's schedule will be short. May is virtually live tournament free.

This issue was completed May 3 and we will make sure all is up to date before printing. We are planning a short "extra" online issue on June 1 for updated info. Note that many events are cancelled way before the official calendar notes them and we may not have timely updates

We hope see you all soon and please thank all your volunteers, club managers, Unit and District board members and all the great columnists we have. We should all look for a glorious return—the only difference should be we may be wearing masks and avoid contact like hand shakes and hugs for a while.

Nancy Strohmer



District 16 President

I truly hope that you and your loved ones are healthy and safe, and that you are finding ways to adjust in these unprecedented times. Hopefully by the time you receive this, the outbreaks of COVID-19 will have diminished and we are back to playing bridge in our clubs but with a different "normal." We will all need to do our part in ensuring a safe playing environment.

It is sad that the Spring and Summer NABC as well as several District 16 tournaments were canceled and that clubs have temporarily closed, but playing bridge continues with expanded opportunities online. There are many games offered daily on Bridge Base Online (BBO). ACBL and BBO offer "Support Your Club ACBL Black Point Games". 80% of the proceeds is funneled back to participants' local clubs. ACBL and BBO worked tirelessly to provide virtual club games and now have over 150 clubs operating online.

Since both the Spring and Summer NABC were canceled, the 2020 GNT Finals will be held at the Tampa Fall NABC. The District GNT Finals will be held August 7-9 in Houston, in conjunction with the Awesome August Sectional at the Marriott Westchase. The details of the 2020 NAP Finals are being discussed by the ACBL Board of Directors at this time. (See Update on the left)

Communication and connectivity are especially important during this time of social distancing and the Scorecard

serves this purpose so well! I continue to be impressed with the quality publication that Ira and Ellen Hessel as Editors as well as the contributors provide us, issue after issue, year after year. If the current pandemic continues, we will review the options for upcoming issues since there will be a reduction of tournament and other bridge activity news to report.

As a bridge group, growing and retaining membership are our priorities. With that in mind, we have expanded the Publicity Coordinator role and merged Marketing with Publicity. The idea of "Marketing" is to help Units with ideas and support to grow membership.

The following appointments have been made: Awards/Honors: **Betty Starzec** / NAP Coordinator: **Larry Davis** / Marketing/Publicity Coordinator: **Rachell Jackson**. Congratulations to Betty, Larry and Rachell in their new roles and many, many thanks to **Scott Humphrey, Roxie Tom and Carolyn Worsham** for their valuable service to District 16! Scott will, however, stay on board as Tournament Coordinator/Sanctions Applications.

As I mentioned previously, my plan is to attend every D16 regional at least once during my term. I enjoyed playing in the Mexico Regional in San Miguel in early March—a well-run tournament in a beautiful venue. Next up is the Dallas Labor Day Regional—hope to see you there! If you have any questions, suggestions, or ideas, please contact me at [nastrohmer@yahoo.com](mailto:nastrohmer@yahoo.com) / 713-882-0626.

While much remains uncertain right now, one thing is for sure: this crisis will pass.

*Wishing all of you good health ~ Let's play more bridge...ONLINE!!!*

## From ACBL 2020 GNT and NAPS

Due to continued restrictions in place across the continent due to COVID-19, both the North American Pairs and Grand National Teams events have been canceled for 2020.

With regard to the 2020-2021 NAP, the qualifiers from the 2019-2020 season will play their final in St. Louis in March 2021 and will receive their travel awards if they attend.

For the 2019-2020 GNT, districts who have completed their district finals may choose to send those teams to the National final in the summer of 2021 or may restart from scratch. Those who qualified will be eligible to play in 2021 based on their masterpoint standing at the time of the original qualifying event. This is a district option, not the ACBL's.

Please communicate this information to the necessary members in your district.

We apologize for the inconvenience and hope you will participate in 2021.

Stay well,  
Nancy Boyd  
Director of Bridge Operations

## Brave New World

1/Cancellations Some events can be canceled or postponed right up to the event day. We stay in contact with the units to see if an event is canceled and indeed some events in the ACBL have been canceled weeks before it is noted online.

2/Many clubs are temporarily running daily online games. Donna and Chris Compton have provided us with an article on online play (page 2)

3/ Dr. Brady Allen, gives us sage advice on dealing with Covid-19 (page 3)

4/ Dr. Samantha Punch, Professor of Sociology at the University of Stirling, UK, is working to establish the 'Sociology of Bridge' as a new academic field and leading the Keep Bridge Alive campaign. (Page 3)

5/ Ace of clubs 2019 next Issue

6/ Steve Shirey gives us an account of his trip on the Grand Princess where he and his wife Darlene directed bridge. (Page 4)

7/ We will provide an Extra online only issue June 1. You should get an email notice. It will include details about bridge events canceled or not.

**8/Please send us articles on dealing with the situation and anything that promotes bridge.**

9/ The ACBL provided April 30– May 3 regional. There are no new ones schedules as of May3 but you may check online at ACBL.org

10/ July 4th Regional in Austin has been canceled and may be rescheduled. The Austin NABC in Fall 2021 is still on.

11/Montreal National is canceled and the National NAP final is scheduled for St. Louis in Spring 2021

12/ District 16 GNT final is canceled.

13/ There might not ever be another World Championship in Wuhan.

**Online Extra Scorecard  
Early June**

Paul Cuneo



District 16 National BOD

The worst of times! As I write this article, the number of Covid 19 cases, hospitalizations and deaths are rising with the peak still unknown. We've cancelled the Columbus NABC, all bridge clubs in major metropolitan areas are closed, tournaments are cancelled and the financial outlook for ACBL and business in general is dismal for at least a few more months. I hope and pray that you are safe and healthy and that the pandemic will pass soon.

The best of times!!! Yes, there are a lot of good things since I last wrote and more on the way. First, the ACBL Board had its first full meeting virtually and the highlight was passing the restructuring proposal by a supermajority. Since this is a bylaws change, it must pass again at the next full board meeting and then be ratified by the Board of Governors.

Over the election cycles of 2021 thru 2023 the size of the ACBL Board will be reduced from 25 to 13 members by combining districts for the sole purpose of electing regional directors. All other district functions remain unchanged. District 16 will be combined with District 15 and our regional director will be elected in 2021 under the proposal.

Restructuring the Board is not a new idea. The minutes reflect several attempts over the past 25 plus years. The current push started in 2015 and I've been working on it since taking office in 2017. It was clear to me then that restructuring would require a change in the members of the board and that has been achieved as we've had 14 new members since 2016. Of those 14, 12 voted in favor, 1 opposed and 1 abstained. I'm confident that a combination of reducing the size of the board, focusing the work of the board on strategy, finance and oversight along with having the bridge committees report to management will ultimately result in better governance and business decisions.

Another good thing is that as I write

there are over 150 clubs that are operating as virtual clubs using the Bridge Base Online platform and I expect we'll have another 300 to 400 over the next couple of weeks. Little did I know when in the fall of 2018 I approached Executive Director Joe Jones for permission to run an experiment to play online club games on BBO that the work to make that happen would enable ACBL and BBO to reach this point in less than 3 weeks. The collaboration between BBO, ACBL Tournament Directors, Club services, Information Technology, and Club Managers from around the country has been amazing to witness.

The response from players to both the Support Your Club games and the Virtual online clubs has been tremendous. Many club managers/teachers have collaborated in the effort to teach players how to use the BBO platform as well.

Another long-term effort that I've been advocating is to develop a bridge app that would interest younger people in learning and playing bridge. For over two years, a successful iPhone app developer has been working and leading a team to develop such an app. I've been in contact with him and encouraging him for a year. This past week the ACBL Educational Foundation Board approved a significant grant to help fund the development. The app is expected to begin to launch for public use later this summer.

I am also amazed by the efforts of doctors and scientists around the world to develop a vaccine that is effective against Covid 19 in record time. Typically, these vaccines take 5-6 years to become available to the public and as I write clinical trials have been started for a vaccine and others will be launched in a few weeks.

This makes me optimistic that despite the tremendous loss of life and wealth caused by the virus that mankind will ultimately conquer it and that the innovations spawned by the pandemic will benefit us in many ways in the future. Until I have the opportunity to see you in person, stay safe and healthy. We'll be together once again in the clubs and at tournaments and have many stories to share.

AMERICAN CONTRACT BRIDGE LEAGUE

DISTRICT 16  
SCORECARD

Bridge News Bulletin for  
The Texas Regional Conference  
10710 Tybalt Trail San  
Antonio, TX 78213

## Moving Up

174	Tera	Boyd	Alvin	Life Master
233	Margaret	Downey	Temple	Life Master
174	Jay	Evert	Houston	Life Master
174	Helene	Gersch	Houston	Life Master
207	David	Goodwin	Leander	Life Master
174	Steven	Gordon	Richmond	Life Master
174	Jerry	Hoffman	Houston	Life Master
174	Joni	Holten	Houston	Life Master
207	Julie	Johnson		Cedar ParkLife Master
174	Linda	Lewis	Houston	Life Master
174	Ronnie	Martin	Friendswood	Life Master
174	Gregory	May	Galveston	Life Master
174	Andrew	Remson	Spring	Life Master
174	Nancy	Shomette	Houston	Life Master
254	Malinda	Bivings	Vertiz Mx	Life Master
207	Wendy	Marks	Austin	Life Master
207	Sheryl	Rokyta	Georgetown	Life Master
176	Jeanne	Wyatt	Dallas	Life Master
174	Jeff	Armstrong	Houston	Bronze LM
207	Frank	Floca	Austin	Bronze LM
174	Steven	Gordon	Richmond	Bronze LM
207	Carol	Hall	Horseshoe Bay	Bronze LM
174	Joni	Holten	Houston	Bronze LM
174	Linda	Lewis	Houston	Bronze LM
174	Andrew	Remson	Spring	Bronze LM
237	Teddy	Rhodes	Mission	Bronze LM
174	Marilyn Gale	Vilyus	Houston	Bronze LM
254	Malinda	Bivings	Vertiz MX	Bronze LM
207	June	Mattila	Georgetown	Bronze LM
204	John	Osborne	Menard	Bronze LM
225	Clifford	Smith	Marietta	Bronze LM
225	Sammie	Borum	Texarkana	Silver LM
174	Ron	Brown	Houston	Silver LM
174	John	Caudill	Houston	Silver LM
174	Karen	Dittert	Houston	Silver LM
174	Mary Cris	Emmons	Houston	Silver LM
172	Nancy	Fisher	San Antonio	Silver LM
172	John	Hilbig	Bulverde	Silver LM
176	Diane	Klein	Dallas	Silver LM
174	Norma	Lampkin	Montgomery	Silver LM
176	Renee	Levy	Dallas	Silver LM
174	Richard	Burkhart	Friendswood	Silver LM
207	Kathryn	Levihn	Austin	Silver LM
207	Lysa	Nguyen	Austin	Silver LM
205	Dagmar	Rettberg	Chapala	Silver LM
207	Kathryn	Bailey	Dripping Spring	Ruby LM
174	A	Desmond	Jersey Village	Ruby LM
207	David	Farris	Smithville	Ruby LM
353	Wanda	Hughes		Wichita FallsRuby LM
176	Norma	Lunsford	Terrell	Ruby LM
172	Barbara	Morgan	New Braunfels	Ruby LM
174	Judith	Smith	Houston	Ruby LM
176	Liane	Tsai	Plano	Ruby LM
201	Robert	Echols	Lufkin	Ruby LM
205	William	Heim	Laredo	Ruby LM
176	Jackie	Hertweck	McKinney	Ruby LM
174	Marilyn	Leiman	Houston	Ruby LM
207	David	Warner	Austin	Ruby LM
173	Victoria	Benozio	San Miguel	Gold LM
207	Sharon	Dameron	Cedar Park	Gold LM
174	Joyce	Gautier	The Woodlands	Gold LM
176	Connie	Martin	Dallas	Gold LM
174	Susan	McMahan	Houston	Gold LM
207	Stan	Pushkarsky	Austin	Gold LM
176	Barbara	Ferm	Dallas	Gold LM
174	Norman	Gautier		Gold LM
197	Evelyn	Kurkli	Petersburg	Gold LM
183	Marlene	Round	Bedford	Gold LM
174	Bonnie	Terrell	Kingwood	Gold LM
174	Nancy	Boothe	Houston	Sapphire LM
207	Anne	LaCour	Georgetown	Sapphire LM
174	Steve	Vaughn	Kingwood	Sapphire LM
207	Sam	Dinkin	Austin	Diamond LM
176	Tomi	Storey	Frisco	Diamond LM
176	Nancy	Stanton	Lewisville	Diamond LM

## ACBL VIRTUAL CLUBS

By Donna and Chris Compton

In March the Bridge Academy of North Dallas (BAND) closed its brick and mortar because, like other clubs, we were no longer able to provide a safe playing environment due to the exploding corona virus.

5 days after closing its doors, BAND became one of the first 3 clubs to join a test pilot for ACBL Virtual Clubs. Since then we have been online operating open games and we were the first to run limited MP games. All ACBL club games are run at [bridgebaseonline.com](http://bridgebaseonline.com) (BBO) and these are the only online games which offer black points. Eventually, bonus points game and silver point games will be available.

There are two different kinds of ACBL Virtual Clubs on BBO:

Save Your Club games which are run on BBO ACBL World.

Private ACBL club games which run on ACBL Virtual Clubs.

The Save Your Club (SYC) games begin daily at 10:00am, 4:00pm, and 6:30pm. These games are designed for players from different clubs to play together. The ACBL charges \$5 and BBO and the ACBL split \$1, while the remaining \$4 goes to any club at which a member has played in the last year. If you played at multiple clubs within the last year, the \$4 is paid pro-rata to each club in accordance with how often you played at which club. The 4:00pm SYC games sell out each day within a half hour of registration which opens 2 hours before game time. As a club owner, there is nothing for you to do for this game, it is all automatic, the check is in the mail!

The Private ACBL club games are designed to take your local club game online. To get started

whomever hold the sanction for a specific game must send the sanction number to [greg.coles@acbl](mailto:greg.coles@acbl) and he will "onboard" your club. In this game a player may only play with someone else who has played in the same club within the last year or has played in no club within the last year.

Regardless of which online game a player has decided to play in, the player must join BBO and follow a somewhat labyrinth registration process. Economists would call this process a barrier to entry and we at BAND have spent hundreds of hours getting our players up to speed. Essentially, the "I will never play online bridge" players are faced with playing online or not playing.

The most significant thing anyone can do to prepare their players for online play is to familiarize them with BBO. Learning how to register on BBO and getting through to the table can be a daunting task for anyone, you are welcome to direct your players to [www.bridgeindallas.com](http://www.bridgeindallas.com) where there are 8 separate short, short videos to guide your players through the process of beginning play online.

**Tips for beginning play on ACBL BBO Games**

BBO is overloaded and merely getting connected to the site can take 20 minutes. Get on early. Peak usage is around 1:00 pm as both Europe and North American players are flooding BBO at that time.

All players must be a member of the ACBL prior to attempting to play and they must have their player number (no letters, numbers only) updated on BBO before they can play. Mistakenly putting a letter or entering the wrong number apparently causes a four-day delay.

• Buy your BBO dollars on BBO with your credit card. Apple Pay, for example, is charging \$12.99 for \$10 worth of BBO dollars, while BBO does not charge any transaction fee.

Both players must be online when registering and both must be online when play begins. The computer is merciless, if you are not online at game time, then your entry is cancelled immediately.

BBO appears to be going to require 6 tables for each online game. This is problematic for small clubs and smaller lower MP restricted games. Accordingly, the ACBL allows the pooling of multiple sanction holders into one large list of eligible players.

If you are an ACBL Sanction holder not planning on taking your game online, then you are eligible to pool your players with any other online sanctioned club to make a larger game. For example, BAND is in the process of merging clubs into online BAND Online. We have onboarded the Las Vegas based Spring Mountain Bridge Club (owned by Charlene Mentz), the Lubbock Bridge Center (operated by the Unit), and we have two more clubs in the pipeline. To express interest in writing with write to me at [chris-compton@mindspring.com](mailto:chris-compton@mindspring.com).

Congratulations to ACBL Executive Director Joe Jones, ACBL Past President Jay Whipple, ACBL Online Coordinator Greg Coles, and the rest of the ACBL team for accomplishing so much in such little time! We know better than anyone it is not perfect, but are games are up and running. See you Online!

Unit	Column	Announcement	Results	Pictures
172 San Antonio	.x	7	7	7
174 Houston	xx	12	8-10	10-
176 Dallas	xx	13	13	13-
183 Fort Western	xx	20		
187 Corpus Christi	0		14	14-15
197 Lubbock	0			
201 Beaumont	x			
204 Fort Concho	0			
207 Texas Capital	x	18	1818-	
209 Permian Basin	?			
224 Abilene	0			
225 East Texas	x			
233 Central Texas	?		15	15
237 Magic Valley	0			
353 Wichita Falls	?			
205 Western Mexico	x		16	16
Bridge Land Cruises		5		

### District 16 BOARD MEETING

Monday, July 6 at 10:30am

Since the Austin Regional was canceled, we will conduct the meeting through the GoToMeeting (virtual) platform. Instructions will be sent closer to the meeting date as to how to "join" the meeting.

We truly hope that all of you are staying well and safe.

### In Memoriam

\*Mrs. V. T. Abercrombie, Houston  
 \*Mrs. Melba L. Cornell, Houston  
 \*Mrs. Norma L. Edsel, Dallas  
 Jean Hartin, Tyler  
 Mrs. Fanny S. Jones, Fort Worth  
 Dorothy M. Klecka, Fort Worth  
 Charles H. Klestadt, Laredo  
 \*Grant R. La Fleur, Lubbock  
 La Doyce Lambert, Odessa  
 \*Mrs. Lena Nichols, Midland  
 \*Leonard Schaen, Dallas  
 \*Mrs. Barbara J. Schissler, Fort Worth  
 Robert R. Siefert, Houston  
 \*Mickey Tryon, Arlington

\*Walter C. Winters, Waco  
 \*Mrs. Peggy W. Wright, Nacogdoches  
 \*Mrs. Barbara J. Estes, Devine  
 Dr. Allan Gold, Dallas  
 \*Josephine B. Grabow, Grey Forest  
 \*Jody Henry, Huntsville  
 \*Mrs. Norma Murray, Menard  
 \*Mrs. Karen Snyder, Spicewood  
 Edna Tuerck, Temple  
 \*William White, Arlington  
 \*Life Master  
 \*Mrs. Karen Snyder, Spicewood  
 Edna Tuerck, Temple  
 \*William White, Arlington  
 \*Life Master

### SCORECARD

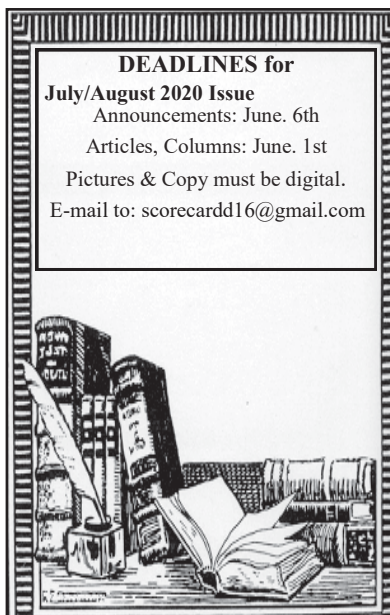
Scorecard (ISSN 10560920) Published bimonthly on the first day of January, March, May, July, September and November by District 16 of the American Contract Bridge League, 10710 Tybalt Trail San Antonio TX 78213 Yearly subscription to members, \$ 3.60, paid with annual dues. Periodical Postage paid at Memphis, TN and at additional mailing offices.

Send copy photos & announcements to: Email: [scorecard16@gmail.com](mailto:scorecard16@gmail.com)

All advertising and copy should be submitted to the editor by the first and sixth days of the month, respectively, preceding publication. Advertising rates available from the editor upon request. Pictures should be in digital format. For replies, include a self-addressed, stamped envelope.

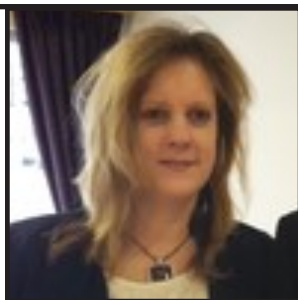
**Moving? Missed Issues**  
 Send address changes to:  
 ACBL Data Processing Dept.  
 6575 Windchase Blvd.  
 Horn Lake, MS 38637  
 662-253-3130 or  
 e-mail [addresschange@acbl.org](mailto:addresschange@acbl.org).  
 Include ACBL number.

**Editors**  
 Executive: Ira & Ellen Hessel  
 Managing: Ellen Hessel  
 Photo Editor: Ellen Hessel  
 GNT/NAP Reporter: Ira Hessel  
 National Reporter: David Sokolow



**DEADLINES for**  
 July/August 2020 Issue  
 Announcements: June. 6th  
 Articles, Columns: June. 1st  
 Pictures & Copy must be digital.  
 E-mail to: [scorecard16@gmail.com](mailto:scorecard16@gmail.com)

**Samantha Punch** is a Professor of Sociology at the University of Stirling, UK. Working to establish the 'Sociology of Bridge' as a new academic field and leading the Keep Bridge Alive campaign. Currently undertaking several bridge research projects, such as an exploration of partnership interactions and team dynamics including gendered inequalities; and a survey on the social benefits of playing bridge.



"I play bridge for Scotland - in the women's team since 2008 (semi-finalist World Bridge Games 2016; 6 UK Lady Milne wins; qualifying for Venice Cup 2019) and in the open Camrose team (2013, 2016-18)."



### Bridge in the Time of Covid-19 Participant Recruitment Letter

In these extraordinary times of Covid-19, the *Bridge: A MindSport for All* (BAMSA) research team at the University of Stirling (led by Professor Samantha Punch) are looking for volunteers to document their experiences of bridge during the pandemic.

If you are a bridge player (amateur or professional), a bridge teacher, tournament director, manager/owner of a bridge club, bridge club committee member and/or part of a national or regional bridge organisation we are interested in hearing your views.

There are three ways you can participate:

- A one-off account of the ways in which Covid-19 has changed your participation and engagement with bridge.
- A weekly reflective diary documenting how your everyday bridging life has changed during Covid-19.
- A series of accounts during lockdown, coming out of lockdown and another when life returns to normal.

Your account can (but does not need to) cover the following:

- Challenges and problems that have arisen due to Covid-19 and your engagement with bridge (and if applicable, how you have addressed these or might address them).
- Positive opportunities and changes that have occurred due to Covid-19 and your engagement with bridge.
- Changes over time from early social distancing to peak lockdown through to postlockdown and which lockdown changes might be incorporated longer-term.
- Anything else that you think is important due to Covid-19 and your bridging life.

If you are interested in participating in this project please read the guidance notes for participants and send your diary entries to [bamsa@stir.ac.uk](mailto:bamsa@stir.ac.uk)



### Bridge in the Time of Covid-19 Participant Information Sheet and Consent Form

Covid-19 has fundamentally changed the everyday lives of millions of people around the world. Bridge: A MindSport for All (BAMSA) research project wants your help to record your experiences of bridge during the pandemic. We are asking players, organisers and teachers of bridge to contribute their reflections on how and in what ways the pandemic has changed their involvement with bridge. This information sheet is designed to support you document this extraordinary time and the impact it has had on your ability to engage in playing, organising or teaching bridge.

#### How to record your experience

Research has shown that writing a diary during distressing and unusual times can be profoundly therapeutic however, we are aware that participants may experience personal and familial loss and challenging circumstances due to Covid-19. Participants are reminded that they can document as much or as little of these experiences as they see fit and that participation can be stopped at any time without any explanation. You are welcome to submit responses as writings or drawings. These writings or drawings can be in any style and there is no prescribed length. Please get in touch with us before submitting sound or movie files.

No emphasis is placed on spelling or grammar. Please don't feel limited by notions of quality or be concerned with 'doing it right.' This project is for everyone involved in bridge (in whatever capacity).

#### We are able to accept the following formats:

- Rich Text Format (.rtf)
- PDF/UA, PDF/A or PDF (.pdf)
- OpenDocument Text (.odt)
- plain text (.txt)
- widely-used formats: MS Word (.doc/.docx), MS Excel (.xls/.xlsx)
- JPEG (.jpeg, .jpg)
- GIF (.gif)

Please don't send us sound or video without contacting us first. We also welcome reflections in hard copy but ask that you don't send them to us at the Faculty of Social Sciences at the University of Stirling before the lockdown period is over.

#### Your identity

The BAMSA research project is not publicly accessible. It is based at the University of Stirling. Your entries will be viewed by researchers who work on the BAMSA project. Please be mindful of this while writing and protect your identity. You can write anonymously, but please make sure that BAMSA staff have your details so that they can contact you if needed. The BAMSA researchers will automatically change any identifying material (eg. names of players, clubs) as well as your own name so that all the material collected will be anonymous and not identifiable as far as possible.

#### Your copyright

We ask that you assign the copyright of this work to the BAMSA project so that we can enable your writing to be used for teaching, research, in the media and community engagement, as well as other researchers (outwith the BAMSA project) interested in the research. We are happy to discuss this with you if you would prefer to retain your copyright. Please get in touch.

#### Donating material

We prefer that you donate your writing/drawing, rather than it being a loan. Please get in touch if you would prefer to offer your work to us as a loan.

#### Statement

If you are happy with the advice offered in this information sheet, we welcome your reflections and ask you to please include the following statement in your work:

I donate my bridge and COVID-19 reflections to the BAMSA project. I consent to it being made publicly available as part of project BAMSA and assign my copyright in this work to the BAMSA researchers so that it can be reproduced anonymously in full or in part on websites, in publications and in broadcasts as approved by the BAMSA researchers. I agree to the University of Stirling and BAMSA being responsible for the collection and processing of personal data and ensuring that such data complies with the

#### General Data Protection Regulation (GDPR).

If willing for this to be included in our analysis and use of the data, please tell us your:

- Age (indicated as a decade range ie. 50-59 years):
- Gender:
- Nationality:
- Years playing bridge:

Please send your entries to [bamsa@stir.ac.uk](mailto:bamsa@stir.ac.uk) You are also most welcome to contact us if you have any questions.

#### (VERY) TENTATIVE SCHEDULE

Many not noted will be canceled  
Online Extra Scorecard will Update Early June

#### JUNE

Houston	5-7
Midland	5-7
Austin NLM	6-7
Acapulco	10-14
San Antonio	11-14
STaC D16	15-21
Arlington	26-28
AUSTIN REGIONAL	29 Jul 5

#### JULY

Houston 299er	9-12
Tyler	9-11
MONTRAL NABC	15-26
Dallas 299er	17-20

#### AUGUST

Houston	6-9
HOUSTON NLM REGIONAL	
GNT Houston	6-9
Austin 199er	15-16
Arlington NLN	22-23
U174 STaC	24-30

#### SEPTEMBER

RICHARDSON REGIONAL	1-7
---------------------	-----

Most June Tournaments Around the Country are Canceled Some of the Tournaments in our District are Canceled but NOT indicated on ACBL site.. Please Check before going.

**We will have Online "Extra Issue" Early June**

### Dr. Brady Allen Lends His Expert Advice

"To all my friends and colleagues in the duplicate bridge community,

As most of you know, I am a retired 67-year-old Internist who devoted my whole career to the HIV/AIDS pandemic. Now we are faced with another devastating worldwide disease caused by the new coronavirus...doesn't seem very fair, does it? It is an invisible enemy, easily transmitted, unpredictable in its severity, with a high mortality rate (especially in the elderly like many of us bridge enthusiasts). Since there is no effective treatment(yet) and no vaccine available in the near future, we are left with behavioral modification as the only effective means to keep us safe...staying home, social distancing if you have to get out, frequent hand washing, disinfecting surfaces, and now even wearing masks in public spaces. Unfortunately, we will be dealing with this virus for months and years to come. It will have

profound long-lasting effects on how we interact between and among each other as we try to get back to "reopening society".

I have also been an avid duplicate bridge player since college. I so enjoy the social interaction and intellectual stimulation that the game provides. Unfortunately, for obvious reasons, we have had to temporarily suspend the game that we all love. Some of us have resorted to Internet Duplicate, but it certainly isn't anywhere as enjoyable as being around our friends and colleagues at the local club or tournaments.

So, as this epidemic starts to recede and as the curve "flattens", I think many of us would like to get back to our favorite hobby (or job!). However, I think we (players, club owners, the ACBL) have to be very careful about when we return and must rely on our sci-

entists (not our politicians) to help make that decision. I also think we need forward- thinking ideas on how to "protect" each other as clubs reopen and tournaments restart. Large groups of elderly people with co-morbid conditions in crowded spaces will require some different strategies. I have a few thoughts that I think may be worth considering: 1) Spread out the tables so they are 6 feet apart (if possible). This might help (certainly can't hurt!), even though the 4 of us at any one table can't be that far apart. 2) Hand sanitizers at every table (should be used by everyone before the next round starts). This might help prevent transmission of the virus that we could potentially get from touching the same cards. 3) Consider either getting rid of bidding boxes or everyone carry their own bidding box to the next table. 4) All players should consider wearing a mask to prevent possible asymptomatic transmission through talking, coughing or sneezing.

These things may sound a little draconian or "over the top", but they seem practical and doable with little added cost. Perhaps, there are other and better ideas that people in the public health domain may have, but I think we at least need to begin to have these discussions in our units and districts before we get back to "business as usual".  
With kindest regards,

Brady"



## Corona Cruise By Steve Shirey



In the spring of 2019, Darlene and I directed a sectional at sea, round trip from San Diego stopping in Hawaii. Since our flight gave us 7.5 hours to spare, we decided to fly the same day. But, DFW had a hail storm, and we ended up flying 11.5 hours later, 3 hours after the ship was scheduled to leave. Luckily, there were 25 people scheduled out of DFW, so they held the ship, and we set sail 6 hours late.

The bridge went perfectly, but we missed our stop in Kauai because of high winds, and our stop in Ensenada because the captain ran over fishing lines.

So, having learned our lesson, we left on February 20, a day early, for San Francisco, to direct a sectional at sea on the Grand Princess. Our flight was just fine, and we had only a little trouble getting from our hotel to the ship with all our luggage, including our bridge supplies. Surely nothing will go wrong this year!

We've directed about 35 times aboard cruise ships, and most cruise lines have a room that we can have most, or all, of the time. This enables us to store at least some of our supplies in the playing area. With Princess, we have to use a dining room. This causes some issues. First, the tables obviously have to be the right size, so they might be scattered around the room. Second, the ship wants us out by 4, so they can start setting up for the 5:30 seating for dinner. This forces us into playing at 9 and 1, with little time for lunch, and packing everything up quickly after the afternoon session.

Our boss told me that we would likely find a letter in our cabin from our ship contact, usually called a Group Coordinator. If not, I should call the front desk to set up a meeting to get coffee service set up, and be sure exactly where in the dining room they wanted us to play.

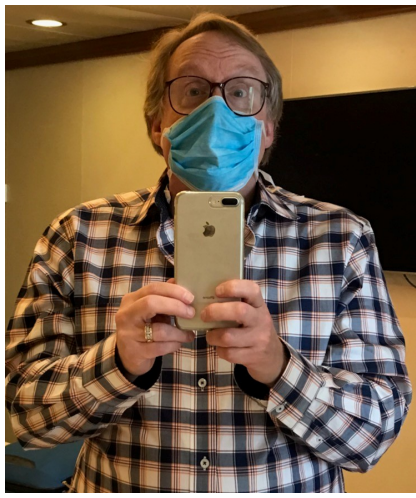
There was no letter, so I called Guest Services. Three times during the afternoon, the phone rang for quite some time with no answer. So, after the mandatory boat drill, I walked down to the desk. They told me that they knew nothing about a Group Coordinator, but they did see our group was scheduled in the Michelangelo dining room from 8 to 4 each sea day.

Our group ended up numbering 23 players, plus Darlene to fill in when needed. We did have some last minute cancellations, some because of seeing the Diamond Princess fiasco, and one from medical reasons. We had 9 pairs, plus 5 singles, including one whose husband was available if needed. He really only knew the rules, and little else, so he only wanted to play if he HAD to.

So the first day we matched up 4 of the singles quickly, but the 5<sup>th</sup> didn't show, and didn't the next 3 days as well. Another pair had some issues with mornings, so the first 2 days we had 5 tables for the morning sessions. When all players showed up, that meant Darlene had to play with the husband who REALLY didn't want to.

The second day, Edgar showed up. He wasn't called a Group Coordinator, but the Customer Relations Manager. He gave us his card, with the Princess Cruises California phone number on it. I asked if I could get his cell, so I could call him directly. He told me he'd rather I just call Guest Services, who could always just reach him to get back to me. That was the last we ever saw or heard from him, even though we left messages. But, we did manage to get coffee/water service starting that afternoon.

More fun on the fourth day. We saw in



the "Princess Patter" (think Daily Bulletin) that a clothing/jewelry sale was scheduled for the Michelangelo. We both figured that they would use the left side tables, or they would have already told us differently. But, as we were setting up, the ship setup people came in and told us we needed to move to the other side. In fact, he said we should have been on the other side the entire time, and couldn't believe nobody had told us that. I related to him that nobody had told me anything the entire cruise.

We had one 92 year old player who used a scooter. On the usual side, we carefully chose the easiest table for her to drive over to, then to get transferred to the chair and not have the scooter block the way for others. When we had to move soon before the game, we just gave her the one closest to the door. So, as she transferred to the chair, she supported herself with the table top. Unfortunately, it wasn't secured to the base, and flipped up somewhat. She then fell hard to the floor – and she's not a small woman. We helped her into the chair, and she decided she wasn't injured. I thought I should call Guest Services. They said if she needed medical assistance, to call 911 – the desk couldn't do anything. I then suggested someone could at least fix the table – they said if I saw a maintenance person, I should tell them myself. After this, Darlene and I only referred to them as Guest "Services," air quotes mandatory.

No problems the next four days – we were in Hawaii, so no bridge. Since all my calls to our missing single had gone unanswered and messages not returned, I wrote a note and slipped it under her door.

After we left Hawaii, we turned the calendar to March – six more days of bridge to go, and one more stop in Ensenada, or so we thought. Our missing single now found us, due to my note. She turned out to be 98 years old, with a second walker to join our scooter vying for a stationary table. At least our reluctant fill-in could usually stay in the cabin. On March 3, we found out about the deceased former Grand Princess voyager the same way most of the world did – TV and internet. The ship did have announcements, but seemed to always be hours later. (Later that even included hearing from Mike Pence about the positive tests onboard; the Captain said he hoped he would be allowed to tell us that.) March 4th they quit giving us a coffee setup, and quit letting people serve themselves at the buffets, but little else changed. On March 5, they started giving social distancing instructions including only using every other seats at restaurants. Then, as we were getting ready to start the afternoon session, they told us that when everyone finished their lunches, we were to go to our cabins and remain there for the duration of the cruise. Some of our group tried to get me to run one last game, but I wasn't going to do that.

We then got all meals outside our doors, and returned the trays afterwards. They did let us order wine and soft drinks, although they ran out of Diet Coke. At first, we were given a menu for all meals, with a very limited number of choices. Later, we only got choices for lunch and dinner, then only dinner, with breakfast and/or lunch a set meal. Usually, we had food left over. Eventually, trays vanished, and we only got meals on plates in the hallway. Later, they came in boxes or bags. After we got to Oakland, World Central Kitchens set up on the pier, and we had no choices, but still plenty of food served.

After arriving in Oakland March 9<sup>th</sup>, non-symptomatic passengers started leaving for flights to their home countries, or US

AFB's. People were called as usual on a cruise, by their luggage tag's color and number. Medical tents were set up outside the ship, taking temps and asking for other symptoms. On March 11<sup>th</sup>, the Captain announced mid-afternoon that after the rest of the California passengers left, that he hoped all remaining passengers would get to leave the next day. We got comfortable, ready to stay one more night, when we got a phone call. They told us to go to the gangway to board our bus.

We quickly got re-dressed, packed up our toiletries, put on our masks, and headed out.

We got to the bus about 5 pm, and kept getting updates that we would leave at any time. Eventually we were told that our plane was at the airport, but needed a repair. At 7, we finally took a slow trip to the airport. Once there, we were told now they just needed to find a crew, and we would be ready to go. By the time a crew arrived, and they loaded all passengers and luggage, we were wheels up at 11:30. The plane had several rows roped off, and plastic sheeting covering some areas. And, all crew were dressed head to toe in full hazmat suits.

We arrived at Lackland AFB in San Antonio about 5 am, and got checked in, temperature taken again, and fed breakfast, then bussed to our rooms by about 7. All meals were to be picked up in the tents centrally located in the parking lot, unless someone had developed symptoms. Then they would get their meals delivered. Darlene and I didn't manage to make it to lunch that first day, but we had to go to dinner for our second temp check of the day. For the first week or so, we had to get our temps checked at breakfast and dinner every day. Later, we were issued thermometers to do the second check, and they divided the first check by alphabet, some at breakfast, some at lunch.

The idea was for everyone to be isolated for 14 days, then released by the CDC. Some were here from other states, and were allowed to go back and isolate at home, although they would have to reset their 14-day clocks. News coverage would lead one to believe that all passengers were given tests.

Not only is that not true, they made pains to mention that a positive test meant you had to start your clock over, needing two negative tests to now be released. A negative test would not get you out any earlier. We were told that it would take 3-4 days to get a result, so if anyone wanted one they should have at least 4-5 days before their scheduled release. (A group had left the day before we did.) Darlene and I chose to get tested March 19, 6 days before our "parole" date.

That day came, and they announced that no more tests would be given, because results were taking too long. When I checked, they said since we were already scheduled, we would get ours. On March 23<sup>rd</sup>, they told us the CDC had changed their recommendations, and that everyone who wanted could leave as soon as possible, and complete their 14 days at home. That was good news for private pick-ups, or rental cars. But, the people who had commercial flights would need to wait until 14 days had elapsed. Some left that afternoon; most with rental cars waited until the next day, as we did. I-35 was still surprisingly busy on March 24<sup>th</sup>.

And our COVID-19 tests? Well, we hadn't gotten them back before we left. I started trying to figure out where to call/email to find out in a few days. Nobody at Lackland knew, the CDC didn't know anything. Finally I tried HHS, two weeks after taking them we finally found out we were negative. That was good news; two members of our bridge group tested positive (they're fine now) and three at Lackland were also positive, so Darlene and I were definitely relieved.

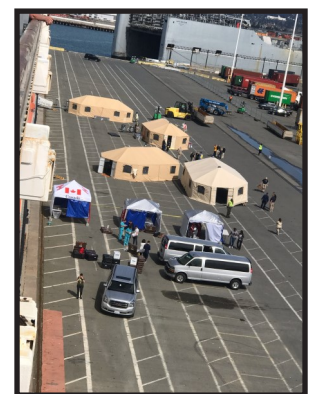


The Grand Princess

## On The Ship




Temporary Home



A Great Welcome Home Greeting

**Unit 172  
San Antonio**



**Jon Tramer**

**Roxi Revamp**

It's a beautiful, sunny Easter Sunday morning in San Antonio. I'm sitting on my back porch, listening to all the birds in the backyard, and there's a light breeze outside. My wife Leslie saw the first hummingbird of the spring at our recently hung feeder yesterday. As I sit here, it seems hard to believe what is going on in the world around us, and that we have been in self-isolation for close to a month already.

Modern technology has been a saving grace for keeping in touch with friends and family, including a lovely virtual Passover Seder this past week. As a retired general surgeon, my knowledge of virology is limited to a case of mumps I saw as a third-year medical student in 1968, so I'm leaving any comments on the coronavirus to the medical experts. I do, however, encourage everyone to follow their recommendations.

A bright spot in my week was an interview with a fellow board member, the delightful Roxi Raaf. She was born just outside Alice, Texas, in Agua Dulce - Sweet Water, of course. When she wasn't learning to quilt on the big wood frame set up by her mother and grandmother, she was learning how to play party bridge from both sets of her grandparents. Roxi graduated from Howard Payne University in Brownwood with a BS in biology. She was a medical technologist for five years and got married in Corpus Christi to her husband, Dave, an engineer for Exxon mobile.

They went back and forth between Texas and Louisiana, but Dave's work also took him overseas. She visited her husband in Qatar, but once her three children were of college age, the couple lived in Tokyo, Japan, and then in Papua New Guinea, where she learned to play duplicate bridge with the expatriate community in Port Moresby. (The game usually consisted of one table.)

The couple returned to Houston in 2014 where she continued to play at the Bridge Club until they retired to Boerne three years ago. The adjustment was a little difficult until her husband said, "Go find a bridge game." She found the Fiesta Bridge Club, and that made all the difference.

She loves the club, which she has found warm and welcoming. During this temporary hiatus, when she isn't pursuing her lifelong passion for quilting, she plays in the daily Fiesta virtual game on Bridge Base Online, as well as taking lessons from either Laurie or Larry. I would urge everyone to join Roxi in supporting the club by playing online. Details can be found on the fiesta bridge website. Roxi Raaf is a wonderful addition not only to the Fiesta Bridge Club but also to our community at large.

**Kerrville Sectional**

Mar 12-15 2020  
114 players.  
Total attendance: 137 tables.

- 1 27.01 Patty Hinze
- 2 27.01 Greg Hinze
- 3 22.24 Ira Hessel
- 4 22.24 Ellen Hessel
- 5 21.21 Dave Swarhout
- 6 19.47 Donna Swarhout
- 7 17.41 Jean Blilie

- 8 17.41 Eugene Lux
- 9 14.14 Rosemary Kelley
- 10 13.68 Gary Anziani

**Thu Morn Open Pairs**-14.5 Tables / Based on 21 Tables A1. Ira Hessel-Ellen Hessel A2BC1. Irene White-Jim Roff B2. Jean Blilie-Eugene Lux C2. Carol Ramberg-S Hultquist

**Thu Morn 499er Pairs**-6.0 Tables ABC1. David Conley-Connie Conley AB2/3 Sharon Evans-Nancy Tom AB2/3 Beverly Flannery-Helen King C2. Judith Beran-Marjorie Hirsch

**Thu Aft 499er Pairs**-4.5 Tables A1. Yesh Singh-James Gardner A2BC1. Linda Gaston-Terrie Kolvoord BC2. Carolee Moss-Claire Lee

**Thu Aft Swiss**-16 Tables / Based on 21 Tables A1. Ed Rawlinson-Dave Swarhout-Donna Swarhout-Gary Anziani A2. Diane Olson-Charles Jefferson-Rosemary Kelley-Bill Walker B1. Bob Otis-Jeri Tribob-Eugene Lux-Jean Blilie B2/3C1. Carol Ramberg-S Hultquist-David Conley-Connie Conley C 2/3 Jo Ann Robertson-Olivia Brown-Jim Roff-Irene White

**Fri Aft Open Pairs** 16 tables A1. C David Mitchell-Hank Eng A2. Dave Swarhout-Donna Swarhout B1. Bob Steidel-Kathy Sinkin-Amor B2. Jeanne Dawley-Tessa Bodnar C1. Larry Shell-James Gardner C2. Yesh Singh-Gerald Irion

**Fri Aft 499er Pairs**-4.0 Tables ABC1. Sharon Evans-Nancy Tom ABC2. David Conley-S Hultquist

**Fri Morn Open Pairs**-15.0 Tables A1. George Fillis-Karen Fillis A2. Greg Hinze-Patty Hinze B1. Jean Blilie-Eugene Lux B2. Carol Ramberg-Wright Barnebey C1. James Gardner-Wayne Tindall C2. Yao-Hui Hsiau-Stewart Windeler

**Fri Morn 499er Pairs**-5.0 Tables AB1. Robert Watson-David Holcomb AB2. Judith Beran-Marjorie Hirsch

**Sat Morn Open Pairs**-13.5 Tables AB1. Jean Blilie-Eugene Lux A2. Greg Hinze-Patty Hinze B2. Joe Ramirez-Phyllis Giffin C1. Jacqueline Carrier-Leona Hagel C2. Larry Shell-James Gardner

**Sat Morn 499er Pairs**-3.0 Tables AB1. Linda Vincent-Susan Hamm AB2C1. S Hultquist-Connie Conley C2. Linda Gaston-Terrie Kolvoord

**Sat Aft Open Pairs**-13.5 Tables / Based on 15 Tables A1. Greg Hinze-Patty Hinze A2. Ira Hessel-Ellen Hessel B1. K Carpenter-Wright Barnebey B2. Carol Ramberg-Jeanne Dawley C1. Linda Vincent-Susan Hamm C2. Lelia Jackson-Nancy Tom

**Sunday Stratified Swiss**-13 Tables A1. Patty Hinze-Greg Hinze-Ellen Hessel-Ira Hessel A2. Charles Jefferson-Gary Anziani-Donna Swarhout-Dave Swarhout Thomas Trudeau-Ed Rawlinson B1. Forrest Gray-Jeanne Dawley-Kathy Sinkin-Amor-Tessa Bodnar B2C1. Patty Moncus-Ginny Littrell-Dorothy Prater-Jacquelyn Fisher

**Online Club Games**

Based on CDC recommendations regarding the Coronavirus, Fiesta Bridge Club has suspended face-to-face games until further notice. Instead, they're offering 7 online games per week hosted on BBO. The games are daily at 10am Central Time and accessible any time after 8 am. Per ACBL anti-poaching rules, most (but not all) local players are eligible to participate in these games. More information and a list of eligible players is available on the Fiesta web site ([www.fiestabridgeclub.com](http://www.fiestabridgeclub.com)). On the web site you'll also find details of the support fund set up by District 16 and Unit 172 and

details of the one-on-one private coaching sessions being offered by Laurie and Larry at very reasonable rates.

If you haven't played on BBO before, you'll need to register, choose a user ID and password, etc. You'll also need to purchase BBS (credits on BBO) to cover your card fees. Buy them on the BBO web site to avoid any surcharges. Avoid the app altogether - just use a web browser (Safari, Chrome, whatever). Most games are 18 boards long and cost about \$5 per person, most of which will eventually reach the host club.

**Detailed instructions**

- (1) Arrange a partner and get their user ID
- (2) Log on to BBO
- (3) Click on Play bridge now
- (4) Select Competitive
- (5) Select ACBL Virtual Clubs
- (6) Select the club and follow the prompts. Both players must be online at the same time in order to join the game. You must give your ACBL number to BBO in order to receive masterpoints.

**To submit, verify or fix your ACBL number:**

- (1) Log on to BBO
- (2) Select ACBL World
- (3) Click on Update ACBL Number
- (4) Log off (important!).

Thanks, Fiesta BC

**UNIT 172 KERRVILLE SECTIONAL WINNERS**



Thursday Aft Swiss Team A  
Ed Rawlinson, Gary Anziani,  
Donna & Dave Swarhout



Saturday Aft Open Pairs A  
Patty & Greg Hinze



Sunday Swiss Team A  
Patty Hinze, Ellen Hessel,  
Greg Hinze, Ira Hessel



Friday Morn Open Pairs A  
Ira & Ellen Hessel



Saturday Aft Open Pairs B  
Kim Carpenter, Andrew Barnaby



Friday Morn 499ers  
Bob Watson, David Holcomb



Friday Aft Open Pairs A  
David Mitchell, Hank Eng



Friday Morn Open Pairs B&C  
Jim Roff, Irene White



Friday Morn Open Pairs C  
Jamie Gardner, Wayne Tindall



Sunday Swiss Team C  
Ginny Littrell, Dorothy Prater,  
Jackie Fisher, Patty Moncus



Friday Aft Open Pairs B  
Kathy Sinkin-Amor, Bob Steidel



Sunday Swiss Team B  
Jeanne Dawley, Kathy Sinkin-Amor,  
Forrest Grey, Tessa Bodnar



Thursday Aft Swiss C  
Carol Ramberg, Connie Conley,  
Steve Hultquist, David Conley



Thursday Aft Swiss B  
Gene Lux, Bob Otis,  
Jean Blilie, Jeri Tribob



Friday Morn 499ers  
David & Connie Conley



Thursday Aft 499ers  
Linda Gaston, Terrie Kolvoord



Saturday Morn Open Pairs C  
Jacqueline Carrier, Leona Hagel



Saturday Aft 499ers  
Linda Vincent, Susan Hamm



Friday Aft Open Pairs C  
Jamie Gardner, Larry Shell

**Dave Becker**

I have been a duplicate bridge player since I was 16 years old. I love the game and the people involved with it. I have been in Texas since 2002; I was raised in Casper, Wyoming and Denver, Colorado.

My passions are bridge and cars for which I have been in the car business all my life also. Integrity, honesty, loyalty, and hard work are the codes to which I live by.

I am past president of Beaumont Unit 201 and would like to contribute and help in Houston now that I have relocated.

If elected, I will do my best to serve, contribute, listen, and convey everyone's wishes to keep the game enjoyable and stimulating.

**B (Binnur) Haznedar**

I grew up in an environment where get-togethers revolved around playing cards, so I developed an affinity for card games at an early age. I obtained my PhD in psychology, and subsequently worked in hospitals, taught as a statistics professor, and owned my own practice. I have been married to my husband for over 40 years and have a daughter who practices corporate law in New York.

I enjoy entertaining, fund-raising, and organizing events. My friends describe me as being laid-back and a great listener. My colleagues describe me as a positive, empathetic person with great determination and a "get the job done" attitude.

As a newer member, I bring a fresh perspective. It would be an honor to contribute to a community that has so greatly enriched my life.

**Greg May**

I am a recently retired engineer. My bridge journey began in college in 1968. In 1973, I moved to Houston and played duplicate at Westbury and Houston Bridge Studio. Pressures of job & life took over and duplicate ended.

I returned to duplicate at GDBC (Feb 2017). I subsequently joined ACBL, became a director (Feb 2018) and Galveston Duplicate Bridge Club manager (Oct 2019).

I want to see bridge survive & grow and have taught several bridge courses & seminars at OLLI (Galveston). If elected, I will work tirelessly with the board to serve the members of Unit 174 and help bridge thrive & grow.

**Kathleen McDougall**

I was introduced to bridge while living in Argentina, pregnant with my first daughter. I was immediately hooked and shortly thereafter began teaching basic bridge to my tennis buddies, eager to spread my passion. Upon return to the US, the demands of my career and raising a family left little time for serious bridge.

Early retirement from the oil industry was my ticket back. I've played with many different people through partnership desks at various Regionals and Nationals since returning to the game in 2018. I'm humbled by the caliber of the people I've already met at the bridge table, particularly from our own unit! I'm excited for the opportunity to serve on Unit 174 and hope to receive your vote.

**Karen Nussbaum**

As a child, I often 'kibitzed' my parents' bridge games. We lived near the Golden Dome of Notre Dame but I went to The Kelley School of Business at Indiana University. After graduating, I worked at IBM and was there for 5+ years wearing many different hats.

I served Congregation Beth El as vice-president for 5 terms. I also chaired the pro-grad event when each of my three children was a senior in high school. Later, I was co-owner of Chocolates and More.

I think my diverse experiences would help me be a valuable and contributing member to our Unit 174 Board of Directors.

**Joe Quinn**

I would like the opportunity to give back to the game which I love very much and have always enthusiastically enjoyed. I have achieved the rank of Grand Life Master with two national championships and have been a Houston unit member since 1974. I started playing bridge after graduating in Chemical Engineering. I also have an MBA.

I recently went to part time work which allows me time to teach bridge which I am enjoying very much.

The Houston unit has an outstanding board and it would be an honor to join this group and I would appreciate your vote.

## Election Update Unit 174

Elections for the three open Board positions have been extended until the June sectional. Online voting has been extended through June 2. Election results will be announced during the Annual Membership Meeting at the June sectional.

If June Sectional is canceled, there will be no in-person voting and online voting will extend until 3pm on Saturday, June 6. Results will be sent by email and posted on our website on June 7. The annual membership meeting will be delayed until the August Sectional & I/N Regional.

### Unit 174 Scorecard Report from Carol Ann Wilson (May-Jun 2020)

**Unit News** ([www.acblunit174.org](http://www.acblunit174.org)): WOW! Who would have imagined that there would be so many life-changing events since our last *Scorecard*? We have certainly learned many things from this crisis, and we will no doubt continue with good habits that will hopefully become second nature to us. One of the biggest changes for me is that the Unit has found a replacement for me as *Scorecard* Reporter for Unit 174. I have been serving in this position since 2012, and even at my advanced age, I work full time, so I have asked to be relieved. After this issue these reports will be written by **Barbara LaVigne**, and I know you will really appreciate her excellent talents.

Since we cannot be together physically at the tables, and we cannot share the same cards, boards, and other duplicate items, most of our clubs in Unit 174 have established a "Virtual Club" at [www.bridgebase.com](http://www.bridgebase.com). How thankful we are to the great folks at BridgeBase! So get yourself set up with an ID and account at BridgeBase and find a club by clicking on "Competitive" and then "ACBL Virtual Clubs" and search for your club. There's a lot of good "bridge stuff" at BridgeBase to be enjoyed. **Dr. Mary Jane Kinnebrew** has even posted a list of "online chat lingo" at the Unit Website, to help us become more familiar with our new form of play. Two most important tidbits about playing in *any* online tournament are (1) you and your partner must *both* be online at BBO to get registered for the event and (2) you and your partner must *both* be online at the tournament site six minutes before the game starts or you will be booted off! Waiting is not fun, but just be patient and do it. **Paul Cuneo** can assist your learning about BridgeBase and how to maneuver around it with his *free online tutorial*, but reservations are required. Find out more by emailing Paul at [paucuneo@sbcglobal.net](mailto:paucuneo@sbcglobal.net).

We have noticed a downturn in visits to our Website, in spite of nearly all of us now being at home most of the time! We suggest that you keep up with all the news of Unit 174 by setting [www.acblunit174.org](http://www.acblunit174.org) as your home page. Then when you click on your browser to pull up the Internet, the first thing up will be our Unit 174 news. We also want to remind our members that financials, minutes, and

other items of interest are posted at the Unit's Website.

By now we all know that ACBL tournaments have been canceled and things are up in the air about when we will, if ever, get back to "normal." We had to cancel our **Election Sectional** we had scheduled for April, and now our next scheduled sectional is **June 5-7**, again at the Marriott Westchase. The annual meeting will be at lunchtime on Sunday. The election dates have been extended. If the tournament has to be canceled, the Board will make arrangements for the election to be held online or in some other way. *Stay tuned for updates about this tournament and the election.*

After June, the next unit sectional will be the "Awesome August Sectional" held **August 7-9**, once more at the Marriott Westchase. The District GNT qualifier is scheduled for that tournament. Flight B will begin on Friday evening (8/7); the other three flights will begin on Saturday morning. All flights will conclude on Sunday afternoon. **About the GNT:** The ACBL has postponed the NABC Finals of the GNTs from July in Montreal until the Fall Nationals in Tampa in November, so there will now be more opportunities to qualify. If you have a team that has not qualified, there may be a way to do so. The next Unit 174 tournament after that will be **November 13-15** at the Arabia Shriners Temple, 10510 Harwin Drive, Houston, TX 77036. Keep checking with the Unit and your clubs for more news about this.

**New 70% Accomplishments:** We did have a few regular games before things got shut down, and here are the Big Games reported. At **Katy Duplicate Bridge Club** on 1/28/20, **Steven Bell** and **Linda Rensi** had a whopping 76% game! At **Westside Bridge Academy** in the open games, **Dan Morse** and **Kitty Wong**, 73.36% on 2/15 and **Vin Tranh** and **Dan Morse**, 72.73% on 3/1; in the I/N games, **Mary and Gerald Jaffa** 70% on 2/18; **Douglas Miller** and **Suzanne Little**, 70.83% on 2/25; and **Herbert and Amy Grossman** 71.43% on 3/10. **Bridge Club of Houston** reports that **Bill and Debbie Nash** had a 70.20% on 2/10; on 2/13 **Sally Wheeler** and **Buddy Hanby** had a 71.83% game; on 2/20 **Bill and Nancy Riley** posted a 71.69%; and on 3/6/20 **Al Cupps** and **Marsha Boyer** had a 71.15 game. Finally, at **Clear Lake Bridge Club** in the open

games, on 2/11 **Nelson Brown** and **J. D. Frick** had a 70.79%; and on 2/21 **David Kuykendall** and **Larry Cossey** posted 71.15%. *Congratulations to all!*

Finally, I leave you and turn it over to the very capable **Barbara LaVigne** with this quote from Sir Arthur Conan Doyle's Sherlock Holmes, which I find applicable not only to a bridge hand but to the current crisis as well: *"It's easy to be wise after the event."* And BTW, FWIW, it may be BFN, but I'll CUL8ER, and we all hope to hear more WDPs!



Unit 176  
Dallas  
Scott Nason

### Unit 176 Newsletter for Scorecard

It isn't my fault, as so many children would protest. My first column was published and, almost immediately, bridge all over the country (world?) came to a screeching halt. So what is going on?

The Unit debated whether or not to hold our March Sectional and decided to proceed. Day 1 was pretty much a success, with 73 tables in play, hand sanitizers in ample supply, and delicious food in abundance. A good time was had by all, and then it hit: with the growing cry for social distancing, we were forced to cut the tournament short and call it quits after one day. Soon thereafter, all clubs in the area shut down and bridge players scrambled to remember (or create) their Bridge Base Online password.

As of this writing, there is no bridge in Dallas, no one heading to Columbus for the NABCs, and no one heading to Houston for the GNTs. There will be no Regional at DFW Airport in April and, just decided, no Memorial Day Sectional. Just a lot of bridge players trying to stay healthy and entertained at home. And looking forward to the end of social distancing in the not-too-distant future. In the meantime, we had 22 tables for a BAND-only online tournament this afternoon, and they now run multiple games every day on BBO, hosting about 40 tables in three masterpoint limit games (open, 299, 99) ... until this is over. The other clubs in Dallas

are participating in BBO's virtual SYC (save your club) games in which a player's fees go mostly back to the clubs at which the participant played in the past year.

There are no tournaments in Dallas until Labor Day, but if things are back to normal by then, we will send our Unit's NAP qualifiers – Chris Compton, Ari Sippola and Pawel Hanus – to Montreal in July. Until then, stay home and stay healthy.

### Dallas Spring Sectional

Richardson TX  
Mar 12 2020  
127 players. : 73 tables

- 1 13.86 Hugh Hillaker
- 2 8.02 Bill Staats
- 3 7.79 Robert Kayser
- 4 7.79 Fred Carver
- 5 6.05 Stephen Kornegay
- 6 6.05 Nancy Kornegay
- 7 6.05 Nagy Kamel
- 8 6.05 Dan Morse
- 9 6.02 Karen Hout
- 10 6.02 Jane Doyle

**Thu Morn 499er Pairs** - 11.5 Tables ABC1. John Redfern-George Ray A2 Louise Shanley- Judy Bouska BC2. B.K. Sloan - Anne McCann .

**Thu Aft Open Pairs** - 12.5 Tables / Based on 24 Tables ABC1. Robert Kayser-Fred Carver A2. Hugh Hillaker-Jerry Derby B2. Phyllis Gravitz- Barbara Grantham C2. Franci Moses - Deanna Davis

**Thu Aft 499er Pairs** - 11.5 Tables AB1. Calvin Winchester - Beverly Winchester A2. Larica Taylor - Rodger Gruenwald B2C1. John Redfern-George Ray C2 Camille Kemp-Eleonora Shafir

**Thu Morn Open Pairs** - 13.0 Tables / Based on 25 Tables A1. Hugh Hillaker-Bill Staats A2BC1. Karen Hout-Jane Doyle B2. Tomi Storey-Scott Nason

**Thu Bracketed Swiss Teams-1** - 12 Tables A1. Dan Morse- Stephen Kornegay - Nancy Kornegay-Nagy Kamel Plano A2B1. N Tripode-Clint Pruet-Nicolas Weisz-Jerry Frankel B2/3 Sandra Fedro - Linda Jimmerman - Betty Wheeler-Tommie Anglemeyer B2/3C1. Neill Ray - Janice Trombello - Gano Ehlers-Anne Goodman C2. Tina Epstein - Anita Platt - Leonard Epstein - Fred Seipp

### The last three days of the sectional were canceled on march 13 due to concerns about the pandemic.



Unit 183  
Fort Western  
Caron Peck

What a different world we live in as we welcome Spring and the warmer weather. I hope that everyone throughout District 16 is staying healthy and upbeat during these difficult times.

Before the Coronavirus usurped our lives and overtook our bridge activities, there were a few Unit 183 bridge-related items to highlight:

On March 1<sup>st</sup>, the Arlington Duplicate Bridge Club (ADBC) hosted a celebration of the life of recently deceased William S. White at the "Bill White Memorial Game". Bill's life and many bridge accomplishments were celebrated with food, shared stories, and with 23 tables in play.

Congratulations are in order for our Unit's own **Rita Prince** and **Eileen Williamson** for placing *sixth overall* in the recent ACBL-Wide International Fund game. They had a 67.7% game. Great job!

And finally, Unit 183's Steve and Darlene Shirey were some of the first to personally experience the world as altered by Covid-19 as they were stranded and quarantined on their cruise ship while returning from their Hawaiian bridge cruise where they had been directing a bridge tournament on board. Look elsewhere in this issue of the Scorecard for Steve's personal account of their very difficult and trying experience.

Like all of our fellow bridge players, Unit 183 members are missing their club games, local tournaments, and – most of all – our bridge friends. Thank goodness for technology which is helping us stay connected while we isolate and shelter in place. We are especially grateful to the ACBL and BBO as they offer us some alternatives to play bridge in "virtual clubs" with the majority of the fees coming back to the clubs that are hosting the games. ADBC began hosting virtual club games on BBO on April 6<sup>th</sup>. The six games held

during that first week yielded 37 total tables while the eight games held the second week had 55 total tables in play. Thanks to everyone in the area for participating!

Hopefully, when it comes time to write the next Scorecard column, things will have greatly improved and we will have much good news to report. In the meantime, we remember all of those affected by the pandemic, and we remain forever grateful to all of the heroes who have supported us in so many ways during these horrific times.

Stay well everyone!

### Fort Western Sectional

Fort Worth TX  
Feb 21-23 2020

156 players.140 tables.

- 1 30.85 Tom Edwards
- 2 27.06 Norman Beck
- 3 24.65 Stephen Kornegay
- 4 24.65 Nancy Kornegay
- 5 23.93 Michael Penick

- 6 23.93 Bill Staats
- 7 22.72 Linda Spangler
- 8 22.29 Billy Leeper
- 9 20.59 Kimmel Jones
- 10 20.59 Hugh Hillaker

**Fri AM Strat Open Pairs**-13.0 Tables / Based on 32 Tables A1. Tom Edwards-Norman Beck A2B1. Bruce Mann-Margot Hirsch B2. Barbara Traphagen-Ellen Dutcher C1. Carol Black-Cynthia Bohnenblust C2. Barbara Keller-Patricia Westbrook

**Fri Aft Strat Open Pairs**-12.5 Tables / Based on 32 Tables A1. Alan Rauch-Donald Pigg A2. Norman Beck-Tom Edwards B2C1. Sharon Harbach-Ross Ramsey C2. Barbara Keller-Patricia Westbrook

**Sat Bracketed Swiss**--1-7 Tables 1. Nancy Kornegay-Stephen Kornegay-Michael Penick-Bill Staats 2. Hua Yang-Tiger King-Yan Song-Jianbo Chen

**Sat Bracketed Swiss**--2-8 Tables 1. Walter Merritt-M Howard-Patricia Sears-Sue Rowe 2. Barbara Baker-Jane Larimore-Jacqueline Montgomery-Laura Nash

**Friday Bracketed Swiss**--1-7 Tables 1. Linda Spangler -Michael Murphy-Kimmel Jones-Hugh Hillaker 2. Nancy Kornegay-Stephen Kornegay-Michael Penick-Bill Staats

**Friday Bracketed Swiss**--2-7 Tables 1. Barbara Baker-Jane Larimore-Jacqueline Montgomery -Laura Nash 2. Gay Nell Ball- Wilma Hill- Betty Peterson- Dee Norris

**Saturday Open Pairs**-7.5 Tables / Based on 15 Tables A1. Billy Leeper-Jerry Derby A2.. Becky Koenigseder -Nancy Peterson B1. Vesta Snider-Mary Alice Giordano B2. Bruce Mann- Margot Hirsch

**Sat Aft Strat Open Pairs**-6.5 Tables / Based on 24 Tables A1. Bart Bramley-Norman Beck A2B1. Barbara Traphagen-Ellen Dutcher

**Sun A/X Swiss**-9 Tables / Based on 21 Tables A1. S Kohan-Linda Spangler-Billy Leeper-Bill Ream A2. Kimmel Jones-Hugh Hillaker-Tom Edwards

**Sun Bracketed B Swiss**-1-12 Tables B1. Liane Tsai-Christopher Tsai-Carla Joiner-Ann Parker B2. Charles Burke-Caron Peck-Karen Caton-Richard Langland C1. Jan Mogged-Charles Mogged Jr-Letty Garek-Marjorie Deutsch C2. Carmond Fitzgerald-Gwendolyn Faherty-Thomas Dickerson -Byron Paris

### Fort Western NLM Regional

Fort Worth,  
Feb 21-23, 2020  
143 players. tables.

- 1 10.85 Dean Anthony, Denton
- 2 10.85 Bill Jernigan, N Richland Hls
- 3 10.11 John Saylor, Grapeview
- 4 8.96 Charles Hill, Keller
- 5 8.27 Phil Schulz, Mansfield
- 6 8.27 Allan Grenadier,
- 7 7.81 Wendy Marks, Austin
- 8 7.81 Bob Allen, Austin
- 9 6.20 Rodney Bland, Arlington
- 10 6.20 Pamela Bland, Arlington
- 11 6.10 Gano Ehlers, Dallas
- 12 6.10 Anne Goodman, Fairview
- 13 5.86 Carol Welch, Flower Mound
- 14 5.83 Gail Wingfield, Irving
- 15 5.18 Chuck Thomas, Carrollton
- 16 5.18 Burton Shepherd, Dallas

**NLM Friday Pairs**-29.5 Tables / Based on 26 Tables A1. Phil Schulz, Mansfield ; Allan Grenadier A2. Rodney Bland-Pamela Bland, Arlington A3. Gano Ehlers, Dallas ; Anne Goodman, Fairview B1. Dean Anthony, Denton ; Bill Jernigan, N Richland Hls B2. Joan Wood-Rodney

Wood, Southlake 58.01%  
1 William Phillips-Peggy Falconer, Fort Worth C2. Sharon Welsh, Plano ; Jim La Rose, Richardson C3. Pamala Pickrell-Pat Featherston, Granbury 49.61%

**Saturday NLM Regional**-26.0 Tables / Based on 24 Tables A1. Bob Allen-Wendy Marks, Austin A2B1. Charles Hill, Keller ; Carol Welch, Flower Mound B3C2. John Saylor, Grapeview ; Gail Wingfield, C1. Gary Britt-Jo Britt, C2. John Redfern ; Caye Cook

**Sun Br Swiss Teams**-1-7 Tables 1. Marcia Messinger-Margie Portela-Debor Cassen, Dallas ; John Saylor, Grapeview 2. Sharon Stewart-Harriet Motter, Mansfield ; Jeannie Schemensky, Arlington ; Caroline Drews, Grand Prairie 3. Rebekah Hahn, The Colony ; David Salem-Burton Shepherd, Dallas ; Chuck Thomas, Carrollton

**Sun Br Swiss Teams**-2-6 Tables 1. Donna Beene-Harley Puff-Jessica McCraw-Tom McCraw, Fort Worth 2. Dean Anthony, Denton ; Bill Jernigan, N Richland Hls ; Ann Lefevre-Elizabeth Semrad, Fort Worth 6

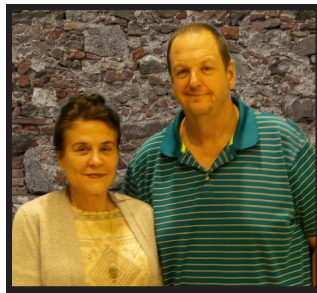
## FT. WORTH NON-LIFE MASTER REGIONAL WINNERS



Friday NLM Pairs B  
Dean Anthony, Bill Jernigan



Friday PM NLM Pairs C  
Butch Phillips, Peggy Falconer



Saturday NLM Pairs A  
Wendy Marks, Bob Allen

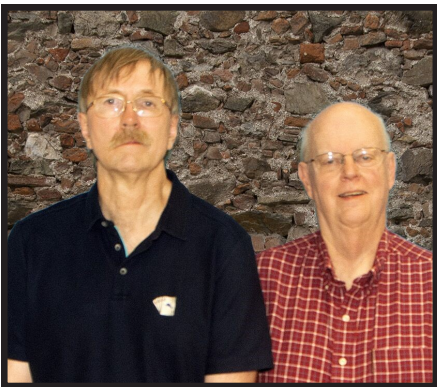


Sunday NLM Swiss Bkt 1  
John Saylor, Debor Cassen.,  
Marcia Messinger, Margie Portela



Sunday BCD Swiss  
Carla Joiner, Liane Tsai,  
Ann Parker, Christopher Tsai

## FT. WORTH FEBRUARY SECTIONAL CHAMPS



Friday Morn & Aft Open Pairs A  
Norman Beck, Tom Edwards



Friday Aft Open Pairs C  
Barbara Keller, Patricia Westbrook



Friday Swiss Bkt 2  
Laura Nash, Jane Larimore,  
Barbara Baker, Jaqueline Montgomery



Saturday AM Open Pairs B  
Mary Alice Giordano, Vesta Snider



Sunday BCD Swiss  
Carla Joiner, Liane Tsai,  
Ann Parker, Christopher Tsai



Saturday PM Open Pairs B  
Ellen Dutcher, Barbara Traphagen



Saturday Swiss Bkt 2  
M Howard, Walter Merritt,  
Sue Roe, Pat Sears



Sunday Swiss Bkt 2  
Jan & Chuck Mogged,  
Letty Garek, Marjorie Dertsch



Friday AM Open Pairs B  
**Bruce Mann, Margo Hirsch**



Place Friday PM Open Pairs B  
Alan Rauch, Don Pigg



Sunday Swiss Bkt 1



Saturday AM Open Pairs A  
Billy Leeper, Jerry Derby



Friday Swiss Bkt 1  
Mike Murphy, Linda Spangler,  
Kimmel Jones, Hugh Hillaker



Saturday Swiss Bkt 1  
Bill Staats, Nancy Kornegay,  
Michael Penick, Steve Kornegay



Saturday PM Open Pairs A  
Norman Beck, Bart Bramley



High season in Unit 205 was just about over when concerns over the Coronavirus escalated, sending many of our seasonal friends scurrying back home. Nevertheless, the end of the season saw a flurry of activity, including our Ajijic Sectional Tournament, the Regional Tournament at San Miguel de Allende in neighboring Unit 173, a visit from Barbara Seagram, and a going-away party for our Canadian friends. And now, after a couple of weeks in isolation with only occasional trips to the grocery store, and with the bridge club shuttered until at least mid-May, I must say I am going a bit stir crazy. I hope we are on the other side of this by the time the Scorecard gets published! Looking forward to seeing everyone again—healthy and safe—at the bridge club.

The Ajijic Sectional Tournament was a great success. The tournament was held from February 20-23 at the Real de Chapala Hotel in Ajijic. As always, the sectional in Ajijic featured great hospitality and lots of prizes. Dozens of home-baked cookies and muffins were served, and Saturday night featured Subway sandwiches and chips along with margaritas and beer. Thanks to everyone who baked, especially Tom Gillett for his wonderful muffins. Event winners received coffee mugs designed by my daughter, Michelle White (@michelle.made.this). Thanks to Mollie Nadler, Cindy Thomson, Donnie van Rooy, John Betz, Lew and Trudy Crippen, Bernita Cooper, Marguerite Brown, and Deborah Camp-Simpson for all of their help both before and during the tournament. As everyone knows, it takes a village!

Overall tournament winners were Moises Ades and Enrico Pagani (Mexico City, MX). Moises and Enrico finished consistently high in all of their events to take the top spot. Thursday Open Pairs were won by Liz Jacobson and Gerdur Kirstjansdottir (Flights A and B), with Clint Smith and John Betz winning Flight C. The Friday morning Open Pairs was won by Jimmy Reynolds and Dagmar Rettberg, while Ken and Rosemarie Masson took the honors in the afternoon game. Gloria Kreimerman and Stefan Reich (Mexico City, MX) also had an excellent tournament, winning the Saturday Open Pairs and finishing first in B in the

Friday afternoon Open Pairs. Other winners in the Open Pairs included Billy Heim and Loren Perry (Fri Morn C) and Jeane Treloar and Charles Chartier (Saturday C). The 0-750 Pairs was largely dominated by Anton Baron (Cuernavaca, MX) and Roger Roussel (Tepoztlan, MX), who were first in C on Friday morning and first overall Friday afternoon. Other players who did well in the 0-750 game included Olga Kaplounenko and Donnie van Rooy (Fri Morn A/B), Doug Oke and Ann Szarka (Saturday A), and Ros Hartenfels and Joan Pearman (Saturday B). The Sunday Swiss was won by the team of Mollie Nadler, Rob Johnson, Liz Jacobson and Gerdur Kirstjansdottir. In Flight C it was Jim Burgess, Ann and Jim Szarka, and Julian Dunlop who took the honors. Congratulations to all of our winners.

We're also proud of our local players who represented us well at the Regional Tournament in San Miguel de Allende. Rob Johnson, playing with Enaid Savage (Guanajuato, MX) finished well in several events, including the Tues/Wed KO Bracket 2 (3<sup>rd</sup> place), Wednesday Side Swiss (2<sup>nd</sup> place), Friday Open Pairs (2<sup>nd</sup> in C), and Sunday Swiss (4<sup>th</sup> place). William Woodfine and Christian Valenzuela of Puerto Vallarta also had a fine tournament, winning the Thursday Open Pairs and finishing 2<sup>nd</sup> in the Open Pairs on Wednesday. Mary Seggerman, also of Puerto Vallarta, made herself proud playing with Kathryn Bailey, Cheri Gross, and Thomas Smith. They finished 2<sup>nd</sup> in the Tues-Wed KO Bracket 2 and first in the Thurs-Fri KO Bracket 2. Sonny Colvett and Deborah Camp-Simpson did not disappoint—they grabbed first in C in the Wednesday afternoon Side Pairs. And finally, Huguette Joly and Roger Buckland, playing with Ariel Smid and Sandra Sarnow (Mexico City, MX), were delighted with their first place finish in Flight C of the Sunday Swiss. San Miguel is a beautiful city with many fine restaurants, and we hope more players from District 16 will put it in their travel plans in the future!

Congratulations to all of our Ace of Clubs and Mini-McKenney winners: Liz Naidoff (0-5 Ace of Clubs), Dave Davies (0-5 Mini-McKenney), Christian Valenzuela (5-20), Clint Smith (20-50), Deborah Camp-Simpson (50-100), Donnie van Rooy (100-200), Rob Johnson (200-300), Cindy Thomson (300-500), Dagmar Rettberg (500-1000), Charles Chartier (1000-1500), Mary Ann White (1500-2500), Tom Gillett (2500-3500), and Jimmy Reynolds (3500-5000). Special congratulations to Clint Smith

who also finished 5<sup>th</sup> overall in the District 16 Ace of Clubs race and 7<sup>th</sup> overall in the Mini-McKenney. He's a player!

Kudos to the following Unit 205 members who advanced their ACBL status: Christian Valenzuela—Sectional Master; John Betz—NABC Master; and Rob Johnson—Bronze Life Master. Way to go!

Congratulations and many, many thanks to our District 16 Star award winner, Janet Mitchell, and to our Goodwill Award winners, Diane van Brocklin and Bernita Cooper. We love you!

**Club News.** The following players posted 70% games in February and March: In Puerto Vallarta—Art Marche an Elaine Ford posted 72.26% on February 19 (12 tables). In Mazatlan—It was Linda and Mike Saltzman with a 70.83% game on February 21 (10 tables) and 70.37% on February 26 (9 tables). Vince and Betty Macachek also hit the mark with 71.3% on February 3 (11 tables). In Lake Chapala—Carla Hickey and Carol Cortez scored big with 74.07% on February 17 (19 tables), and Alex Kornel and Barbara Seagram posted a 70.35% on March 2 (17 tables). Finally, in the 299r game, Doug and Lorraine Parry got a big taste of success with 74.09% on February 28 (13 tables).

Lake Chapala also hosted a Charity Swiss on February 26, which was won by the team of Jimmy Reynolds, Dagmar Rettberg, Lane Galloway, and Nicci Beninger.

Alex Kornel and Barbara Seagram won the ACBL-Wide Senior Pairs on March 2 with a very nice 70.35%. That was good enough for 2<sup>nd</sup> overall in District 16 and 6<sup>th</sup> overall for the ACBL. Wow!

The Lake Chapala Club was delighted to have Barbara Seagram visiting the area for the month of March. She was gracious enough to present several classes at the Club, with the proceeds going to charity. Her session on "Double Trouble" was very well received by the Wednesday supervised bridge crowd. And she also presented "Killing Defense" and "Stripping Can Be Fun" prior to the Tuesday and Thursday games on March 17<sup>th</sup> and 19<sup>th</sup>. All sessions were fun and informative, and we cannot thank her enough for her time. We look forward to seeing her again at Lake Chapala in the future.

In other Club news, the Lake Chapala DBC hosted its annual going-away party for our seasonal friends—the

Snowbirds. The party was held at Los Telares Restaurant on March 18, with dinner, music, and dancing. (Okay, the band was detained because they got in an accident on the way to the venue, but somebody started some music and the party carried on!) We hope everyone got safely back home to Canada or the U.S. and completed their 14-day quarantine and self-isolation period without complication. We'll see you again in better times next year!

**Puerto Vallarta**

Feb 25-28 2020  
100 players 119 tables.

- 1 28.65 Jerry Ranney
- 2 27.12 Debra Dallas
- 3 24.77 Jane Ranney
- 4 16.47 Gerry Marshall
- 5 16.47 Cristian Valenzuela
- 6 10.40 Alice Kinningham
- 7 10.16 Maxine Webb
- 8 10.16 Linda Lake
- 9 9.99 Richard Flax
- 10 9.22 Kris Wong
- 11 9.22 Gail Gabiati
- Tuesday AM Pairs**-17.0 Tables A1. Debra Dallas-Jerry Ranney A2. Gerry Marshall -Cristian Valenzuela AB1. Richard Flax-Elaine Beyeler B2. William Anderson-Elana Anderson C2. Joan Lager-Keith Jackson
- Tuesday Afternoon Pairs**-16.5 Tables A1. Maxine Webb-Linda Lake A2. Jerry Ranney-Jane Ranney B1. William Anderson-Elana Anderson B2. Charles Odle-Sharon Odle C1. Thomas Larson-Jane Larson C2. Heather Morgan-June Hart
- Wednesday Morning Pairs**-14 Tables AB1. Vito Perillo-Beverly Simpson A2. Jane Ranney-Debra Dallas B2. Terry Doyle-Rene Reid C1. Clifford Fairchild-Susan Fairchild C2. Jeffrey Krasner-Donna Dahl
- Wednesday Afternoon Pairs**-13.0 Tables / Based on 17 Tables A1. Gerry Marshall-Cristian Valenzuela A2. Jerry Ranney-Debra Dallas B1. Garson Heller Jr-Marianna Wright B2C1. Heather Morgan-Carolyn Yelton C2. Richard Flax-Jan Mori C2. William Le Beau-Beverly Le Beau
- Thursday Morning Pairs**-12.5 Tables A1. Jerry Ranney-Jane Ranney A2B1. Terry Doyle-Donelda Maclean A2. Leo Myers-Gerry Goyeau B1. Peter Divine-Dee DeRosa B2. Bertye Gluckstein -Cynde Lere
- Thursday Afternoon Pairs**-12.0 Tables A1. Jane Ranney-Debra Dallas A2. Gerry Marshall-Cristian Valenzuela BC1. James Casserly-Mary Molzahn BC2. Jeffrey Krasner-Donna Dahl
- Friday Swiss Teams**-15 Tables A1. Andre Gaudet-Kenneth Baughan Gloucester ON; Hilton Greenberg Thornhill ON; Robert Tremblay A2.

Jerry Ranney-Jane Ranney-Debra Dallas-Alice Kinningham B1/2C1. Jan Mori-Kathy George-Norman Webb-Richard Flax B1/2 Garson Heller Jr-Marianna Wright-Gail Gabiati-Kris Wong C2. Christian Murie-Pierrette L Italien-Robert Hauck-Richard Lamb

**Ajijic Valentine Sectional**

Feb 20-23 2020  
106 players.130 tables.

- 1 17.31 Moises Ades
- 2 17.31 Enrico Pagani
- 3 16.17 Stefan Reich
- 4 16.17 Gloria Kreimerman
- 5 14.86 Sue Gerard
- 6 14.86 Adela Naftali
- 7 13.84 Liz Jacobson
- 8 13.84 Gerdur Kristjansdottir
- 9 13.58 Jimmy Reynolds
- 10 13.58 Dagmar Rettberg
- Thursday Evening Pairs**-12.5 Tables AB1. Liz Jacobson-Gerdur Kristjansdottir A2. Thomas Gillett-Mary Ann White B2. Lane Galloway-Nicola Beninger C1. Clint Smith-John Betz C2. Anton Baron -Roger Roussel
- Fri Morn Open Pairs**-12.0 Tables / Based on 22 Tables A1. Jimmy Reynolds-Dagmar Rettberg A2BC1. William Heim-; Loren Arthur Perry BC2. Jorge Rosen Alvaro -Monica Schapira
- Fri Morn 0-750 Pairs**-9.5 Tables BC1. Olga Kaplounenko-Donald Van Rooy BC2. Ros Hartenfels-Joan Pearman C1. Anton Baron-Roger Roussel C2. Jill Gray-Deb Parent
- Fri Aft Open Pairs**-13.0 Tables / Based on 19 Tables A1. Ken Masson-Rosemarie Masson A2. Enrico Pagani -Moises Ades B1. Stefan Reich-Gloria Kreimerman B2C1. S Kaufer-Thelma Gorinstein C2. Gilles Aubin-Cecil Crowson Jr Morelos
- Fri Aft 0-750 Pairs**-6.0 Tables ABC1. Anton Baron -Roger Roussel AB2. Ros Hartenfels-Joan Pearman C2. Jill Gray-Deb Parent
- Sat Open Pairs**-12.5 Tables / Based on 20 Tables AB1. Stefan Reich-Gloria Kreimerman A2. Adela Naftali -Sue Gerard B2. Carol Cortez-Louise Morel C1. Jeane Treloar-Charles Chartier C2. Norman Rosenblatt-David Hoogenberg
- Sat 0-750 Pairs**-6 Tables / B1. Douglas Oke-Ann Szarka B2C1. Ros Hartenfels-Joan Pearman
- Sun Swiss Teams**-19 Tables AB1. Mollie Nadler -Robert Johnson-Gerdur Kristjansdottir-Liz Jacobson A2. Louise Morel-Ray Hickey-Carol Cortez-Carla Hickey B2C1. Jim Burgess-Ann Szarka-Jim Szarka-Julian Dunlop C2. Esther Ovadia-Maurice Azoulay-Jean Roynon-John Roynon

**AJIJIC SECTIONAL WINNERS**



Liz Jacobson, Gerdur Kirstjansdottir  
Thurs Open Pairs A



Jimmy Reynolds, Dagmar Rettberg  
Fri Morn Open Pairs A



Ken & Rosemarie Masson  
Fri Aft Open Pairs A



Gloria Kreimerman, Stefan Reich  
Sat Open Pairs A



Rob Johnson, Gerdur Kirstjansdottir,  
Mollie Nadler, Liz Jacobson  
Sunday Swiss A



Bill Heim, Loren Perry  
Fri Morn Open Pairs C



Charles Chartier, Jeane Treloar  
Sat Open Pairs C



Olga Kaplounenko, Donnie van Rooy  
Fri Morn 0-750 Pairs A



Roger Roussel, Anton Baron  
Fri Aft 0-750 Pairs A



Ros Hartenfels, Joan Pearman  
Sat 0-750 Pairs



Doug Oke, Ann Szarka  
Sat 0-750 Pairs



**Unit 207  
Austin**



**Sue Caulfield**

Hello all. Are you staying in your homes? Right now, we should all be doing that so that when the clubs do open and the tournaments start up again, we will all still be around to participate. As you are aware, many events have been canceled, the most significant, our July Regional. Watch your email for future cancellations and schedule changes. Remember, you can still play online at our virtual club. **BCAustin Open #3766** and **BCAustin 0-500 #3750** are the online Austin clubs. You can find them in the **FEATURED AREAS** under **Virtual Clubs (ACBL Virtual Clubs)**. Verify play times in advance. **SPECIAL EVENTS AND GAMES Watch for all cancellations and game changes.**

**GRAND NATIONAL TEAMS DISTRICT 16 FINALS**

Dates have been changed to **August 7-9, 2020**

**4TH OF JULY REGIONAL**

June 29 - July 5

**OFFICIALLY CANCELED**

The board is looking into re-scheduling at a future date, possibly October. Watch your email for information about this.

**UNIT 207 BOARD CHANGES**

Congratulations to our newest board members—Linda Griffith, Cheri Gross, and James Moody.

**Unit Officers:**

**President:** Sharon Hoger  
**Vice-President:** James Moody  
**Secretary:** Cheri Gross  
**Treasurer:** Barbara Clements

**PASSINGS TO NOTE:**

We are deeply saddened by the loss of three more members of our bridge community.

**Pat White** in March

**John Adams** in March

**George Shelley** in March

**MILESTONE ACHIEVEMENTS**

More members have reached new levels. Congrats to all!

**RANK CHANGES AS OF MARCH 1<sup>ST</sup>**

**Junior Master:** Joanne Di Carlo, Susan Dilorenzo, **Club Master:** Susan Angle, Maria Foust, Stephen Foust, Ronald Romonosky, **Sectional Master:** Sue Carter, Aaron Denton, Jan Dahlin Geiger, David Keim, Matt Stephans, Dave Young, **Regional Master:** William Horton, Mary Jagers, Lilly Justman, Brenda McIndoo, **NABC Master:** J Patrick Finnigan, John Foley, **Adv NABC Master:** Eric De Rouffignac, Karen Oberling, **Life Master:** Arthur Herriott, **Bronze Life Master:** Linda Lewis, **Silver Life Master:** David Davis, **RANK CHANGES AS OF APRIL 1<sup>ST</sup>**

**Junior Master:** Vickie Keith, Isaac Stone, **Club Master:** Patricia Evans, Gil Kuykendall, Susan Shepard, **Sectional Master:** Dan Mudgett, Byron Paris, Cindy Walthall, **Regional Master:** Susie Flynn, Edward Kim, Terrie Kolvoord, Alecia Southworth, **NABC Master:** Daniela De Falco, Cheri Gross, Stuart Litwin, **Adv NABC Master:** Ronald Kunkel, Emil Russiello, Curt Wyman, **Life Master:** David Goodwin, Julie Johnson, **Bronze Life Master:** Frank Floca, Carol Hall, **Ruby Life Master:** Kathryn Bailey, David Farris, **Gold Life Master:** Sharon Dameron, Stan Pushkarsky, **Diamond Life Master:** Sam Dinkin

**RANK CHANGES AS OF MAY 1<sup>ST</sup>**

**Club Master:** Cyndi Ahrenholtz, Travis Lindenbaum, **Sectional Master:** Cindy McCauley, **Regional Master:** Aaron Denton, Judy Devore, Beverly Miller, **NABC Master:** Jean Durocher, Linda Vincent, **Life Master:** Wendy Marks, Sheryl Rokyta, **Bronze Life Master:** June Mattila, **Silver Life Master:** Kathryn Levihn, Lysa Nguyen, **Ruby Life Master:** David Warner, **Sapphire Life Master:** Anne LaCour

**BOLS BRIDGE TIP FROM**

**SANDY LANDY**  
Sandy Landy was a contract bridge player who played internationally for England and for Great Britain. She was a member of the England teams which won the women's world championship, the Venice Cup, in 1981 and 1985.

**Remember What They Didn't Do**  
*When deciding on your line of play, remember what the opponents didn't do. It may give you the clue to playing hands more successfully.*

**WHAT WOULD YOU LIKE TO READ IN THE SCORECARD?**

There's never a better time than now to suggest new topics. Email me those suggestions or talk to me at the Bridge Center. Your thoughts make our newsletter better!  
susiecc@comcast.net

**BCA Spring Sectional**

Austin  
Feb 27-Mar 01 2020  
by 301 players.285 tables.

- 1 43.30 Jim Hilton
- 2 28.17 Kenneth Schutze
- 3 24.51 Donna Swarhout
- 4 24.51 Dave Swarhout
- 5 23.04 Sharon Dameron
- 6 21.10 Jack Lacy
- 7 20.19 Phillip Grothus
- 8 20.19 Kathryn Bailey
- 9 18.63 Claudette Hartman
- 10 18.02 Anne LaCour

**Thurs Morn Strat Op Prs-17.5**  
Tables / Based on 24 Tables A1. Jerry Barrett-James Moody A2. Jack Lacy-R Harry Akin B1.. Jim Wallace-Virginia Miller B2. Simone Scumpia-Stephen Wood C1. Cindy Walthall-Janet Hawk C2. David Minto-Pat Baker

**Thurs Morn Strat 299 Prs-6.0**  
Tables AB1. Linda Gaston-Terrie Kolvoord A2. John Foley-Charlene Coor B2. Sharon Evans-Nancy Tom

**Thurs Aft Strat Op Prs-13.0**  
Tables / Based on 18 Tables A1. Tobi Sokolow-Claudette Hartman A2. Paul Tobias-Elizabeth Tobias B1. Jim Wallace-Virginia Miller B2. Kathleen Adams-Tod Pontius C1. David Minto-Pat Baker C2. Linda Vincent-Liz Hinkle

**Thurs Aft Strat 299 Pairs-5.0**  
Tables AB1. Linda Gaston-Terrie Kolvoord A2. J Patrick Finnigan-Wendy Marks B2. Dorothy Foster-Mary Jagers

**Thurs Morn Swiss Team-18**  
Tables

AB1. Gloria Wilson-Sandra Harris-Michael Harris-Leo Potsiadlo AB2C1. J Patrick Finnigan-W Kenneth Davis-David Davis-Wendy Marks C2. Jean Durocher-Juri Randmaa-Connie Randmaa-Earnestine Broyles

**Thurs Aft Swiss Team-18**  
Tables A1. Marilou Powell-Thomas Smith-Sharon Dameron-Kathryn Bailey A2B1. Ken MacMorran-Sharon MacMorran-Richard Frankeny-Diana Frankeny B2. Bob Allen-R Gary Marquart-David McCarron-Mary McCarron C1. Mark Alpert-Judy Alpert-Sue Alt-Cynthia Rivet C2. Robert Caldwell III-Bill Kalmbach-Orlin Johnson-Elizabeth Ling

**Fri Morn Strat Op Prs-15.5**  
Tables / Based on 24 Tables A1. Kenneth Schutze-Jim Hilton A2. Hanan Lushkov-Mary Anne Laier B1. Frank Floca-Mark Craig B2C1. Linda Bishop-Brenda Zeijdl B2. Michael Schwimmer-Charlotte Gates

**Fri Morn Strat 299 Pairs-8.0**  
Tables A1. Linda Gaston-Kevin Orr A2B1. Sharon Morrone-Susie Flynn B2C1. Maryellen Holbrook-Melba Ferguson C2. Judy Devore-Dan Mudgett Austin

**Fri Aft Strat Open Pairs-16.5**  
Tables / Based on 24 Tables A1. Jack Lacy-Jim Hilton A2. Terri O'Brien-Scott Humphrey B1. Kalyan Venkat-Jarek Langer B2C1. Yesh Singh-Larry Shell C2. Lilly Justman-Robert Tyler

**Fri Aft Strat 299 Pairs-7.0**  
Tables A1. Linda Gaston-Kevin Orr A2BC1. Judy Devore-Dan Mudgett C2. Joanne Davis-Lois Kertes

**Fri Morn Swiss Team-18**  
Tables A1/2 Charlene Sands-Virgil Massey-Donna Swarhout-Dave Swarhout A1/2 Jennifer Breihan-Thomas Rush-Phillip Grothus-James Breihan B1. Ken MacMorran-Sharon MacMorran-Richard Frankeny-Diana Frankeny B2C1. Richard Ryan-Eric De Rouffignac-Bob Allen-Harvey Browning C2. Jean Durocher-Connie Randmaa-Juri Randmaa-Earnestine Broyles

**Fri Aft Swiss Team-16**  
Tables A1. Kathryn Bailey-Ron LaCour-Claudette Hartman-Eddie Bass A2. Thomas Smith-Anita Albert-Stan Pushkarsky-Sharon Dameron BC1. Cynthia Rivet-Sue Alt-Ann Roe-Arthur Widen BC2. W Kenneth Davis-David Davis-Lisa Holzgrafe-Jane Collins

**Sat Morn Strat Op Prs-20.0**  
Tables A1. Jim Hilton-Lee Stokes Hilton A2. Louis Sachar-David Sokolow B1. Joyce Cooper-Steven Andersen

B2C1. Larry Shell-Yesh Singh C2. David Minto-Pat Baker  
**Sat Morn Strat 299 Pairs-10.5**  
Tables ABC1. Sue Carter-Susanna Busico A2. Stuart Litwin-Kevin Orr BC2. Ann Denton-Susan Thompson  
**Sat Aft Strat Open Pairs-16.0**  
Tables / Based on 23 Tables A1. Anne LaCour-Scott Humphrey A2B1. Roxann Swenson-John Moore B2. Ron Brown-Judy Brown C1. Bob Green-Dionne Green C2. Larry Shell-Yesh Singh

**Sat Aft Strat 299 Pairs-7.0**  
Tables A1. Stuart Litwin-Kevin Orr A2BC1. Tom Charlton-Terrie Kolvoord BC2. Judy Devore-Dan Mudgett

**Sat Morn Swiss Team-18**  
Tables A1. Charlene Sands-Virgil Massey-Donna Swarhout-Dave Swarhout A2. Daniel Jackson-James Breihan-Jennifer Breihan-Phillip Grothus B1/2 Rebecca Parmentier-James Glathar-A Ansari-Mickey Goldwater B1/2 Michael Harris-Kyong Shuey-Vincent DeConti Naperville IL; Pauline Pettinato C1. Donna Saltz-Glenn Rudd-Karen Oberling-Arthur Herriott C2/3 Cynthia Rivet-Arthur Widen-Sue Alt-Janet Hawk C2/3 Cheri Gross-Michael Rainbird-Charlene Coor-Ronald Kunkel

**Sat Aft Swiss Team-16**  
Tables AB1. Kathryn Bailey-Barbara Morgan-Sharon Dameron-Thomas Smith A2. Stan Pushkarsky-Anita Albert-Marilou Powell-Terri O'Brien B2C1. Patricia Webb-Marie Russiello-Emil Russiello-Barbara Rodriguez C2. Michael Rainbird-Charlene Coor-Cheri Gross-Ronald Kunkel

**Sunday A/X Swiss Teams-20**  
Tables / Based on 39 Tables A1. Jim Hilton-Kenneth Schutze-Ellen Hessel-Ira Hessel A2. Rosemary Kelley-Daniel Jackson-Bill McCarty-Phillip Grothus X1. Sharon Dameron-Genie Nyer-Jarek Langer-Shawn Drenning X2. Nancy Joe-Richard Clarke-Peter Naimoli-Robert Grover

**Sun Brktd B Swiss Team-1-7**  
Tables 1. Richard Clements-Barbara Clements-Spencer Ledlow-Robert Caldwell III  
4.28 2. Rita Wiegenstein-William McIndoo-Don Grider-Inez Grider

**Sun Brktd B Swiss Team-2-12**  
Tables 1. Mark Alpert-Judy Alpert-Ron Sassen-Sally Sassen 2. Karen Oberling-Gregory Flanagan-Michael Chow-John Haussmann—

**FEBRUARY-MARCH AUSTIN SECTIONAL WINNERS**



Friday AM 299er Pairs  
Linda Gaston, Kevin Orr



Sat PM 299er Pairs  
Stuart Litwin, Kevin Orr



Sun Swiss Flt B Brkt 1  
Robert Caldwell III, Barbara Clements,  
Richard Clements



Sun Swiss Flt B Brkt 2  
Judy Alpert, Mark Alpert,  
Sally Sassen



Friday PM Swiss Teams Flt C  
Patricia Webb, Barbara Rodriguez,  
Marie & Emil Russiello



Thursday PM and Friday AM Swiss Teams Flt B  
Richard & Diana Frankeny,  
Sharon & Ken MacMorran



Sun AX Swiss Flt X  
Genie Nyer, Sharon Dameron



Thursday AM and PM 299er Pairs  
Linda Gaston, Terrie Kolvoord



Sat PM 299er Pairs  
Stuart Litwin, Kevin Orr



Sat PM 299er  
Tom Charlton, Terrie Kolvoord



Thursday PM Swiss Teams Flt A  
Sharon Dameron, Kathryn Bailey,  
Thomas Smith, Marilou Powell



Saturday AM Open Pairs Flt A  
Jim Hilton, Lee Stokes Hilton



Sat AM Open Pairs Flt B  
A Ansari, Mickey Goldwater,  
Rebecca Parmentier., James Glathar



Friday AM Open Pairs Flt A  
Jack Lacy, Jim Hilton



Sat PM Swiss Teams Flt A,B  
Barbara Morgan, Sharon Dameron,  
Thomas Smith, Kathryn Bailey



Sun AX Swiss Flt A  
Jim Hilton, Kenneth Schutze



Thursday PM Open Pairs Flt A  
Claudette Hartman, Tobi Sokolow

**Unit 201  
Sabine Neches**



**Linda Briggs**

201  
Marian Jones was honored at her Gold Life Master Party February 15. The elegant affair was put on by Joan Hataway, Jim and Edwina Landrum, Betty Poindexter, Kaz Bell, Liz Mackenzie, Martha Sigler, June Eddingston, Arline Meyers, Sylvia Street, Kay Hooper, Cynthia Stueber, Nancy Smalley, Loretta Gary, and Mary Johnson. A fashion show, narrated by Joan with the host and hostesses as models, was followed by a skit given by Jobie Irvine and Carol Seabrooke. The 13 stnd½ table game produced therd following results: 1 - Tipton Golias and Dr. A. Bharathi; 2 - Jerry and Susan Gore; 3 - Sandra Allison and Paul Keedy.  
The 65th Spindletop Sectional, March 5-7, co-chaired by Sylvia Street and E.W. Sweeney, attracted 117 players (110 tables) who earned over 412 silver points. Liz Mackenzie took care of partnerships. Dr. A. Bha-

rathi earned over 22 points to again capture the John and Nancy Smalley Trophy which is awarded to the U201 member who earns the most masterpoints. Other high scoring U201 members were Tipton Golias, E.W. Sweeney, Susan Gore, Martha Sigler, Ed Rasmussen, Pat Bell, Liz Mackenzie, Flo Gillispie, Cynthia Stueber, Carol McGill, Marianna Carpenter, Paul Keedy, Sandra Allison, and Betty Poindexter.  
February mentor pairs placing: 1rd<sup>st</sup> - Val Townley-Smith and Nancy Smalley; 2<sup>nd</sup> - Sylvia Street and Pat Bell; tied for 3<sup>rd</sup> - Judy Dishman and Martha Sigler; Patricia Woods and Don Mossnd. February mentor teams placing: 1 - Carolyn Oliver, Jobie Irvine, Arline Meyers, and Tim Stelly; 2<sup>nd</sup> - Val Townley-Smith, Helen Williams, Nancy Smalley, and E.W. Sweeney; 3<sup>rd</sup> - Glenda Bass, Patricia Woods, nd Don Moss, and Linda Briggs.  
March mentor pairs placing: 1<sup>rd</sup> - Glenda Bass and E.W. Sweeney; 2 - Norma Crane and Patsy Pierce; 3 - Patricia Woods and Don Moss.  
The highest monthly totals for February: Dr. A. Bharathi, Tipton Golias, and John Smalley. March:

Dr. A. Bharathi, Tipton Golias, and Susan Gore.  
Players with 70% or above games in February/March were Martha Oliver and Dee Payne; Dr. A.

**Spindletop Sectional**

Mar 05-07 2020  
91 players. :\_111 tables.

- 1 22.84 Aiyandar Bharathi
- 2 17.85 Tipton Golias
- 3 15.65 Pat McMullin
- 4 15.65 Nancy Boothe
- 5 12.11 Everett Sweeney
- 6 10.35 Susan Gore
- 7 10.25 Martha Sigler
- 8 9.86 Edward Rasmussen
- 9 9.31 Patricia Bell
- 10 9.24 Norma Lampkin
- 11 9.24 Janice Walker

**Fri Aft Open Pairs** - 18.0 Tables / Based on 22 Tables A1. Aiyandar Bharathi - Tipton Golias A2BC1. Richard Carpenter - Marianna Carpenter B2. Vivian Breedlove - Janice Niederstadt B2. Susan Pennington - Joseph Kazmar  
**Fri Aft 299er Pairs** - 4.0 Tables

ABC1. Marcie Jacikas - Art Jacikas 1.08 2 2 2 Henrietta Sasser Goodrich ; Kathy Clark  
**Thu Morn Open Pairs** - 15.0 Tables / Based on 19 Tables A1. Edward Rasmussen -Carol Ann McGill A2. Aiyandar Bharathi - Nancy Smalley B1. Linda Briggs - Elizabeth Mackenzie B2C1. Susan Pennington - Joseph Kazmar C2. Lois Gail Griffith - Martha Oliver  
**Thu Morn 299er Pairs** - 3.5 Tables AB1. Art Jacikas - Marcie Jacikas AB2. Bebe Walker - Jannis Duncan  
**Thu Aft Open Pairs** - 17.0 Tables / Based on 21 Tables A1. Nancy Boothe - Pat McMullin A2BC1. Everett Sweeney-Carolyn Oliver B2. Paul Keedy-Sandra Allison C2. Adrienne Juno-Carol McCord  
**Thu Aft 299er Pairs** - 3.5 Tables AB1. Henrietta Sasser-Sharon Kirkland AB2. G Maxine Moye-Rita Moss  
**Fri Morn Open Pairs** - 15.5 Tables / Based on 21 Tables AB1. Norma Lampkin - Janice Walker A2. Nancy Boothe - Pat McMullin B2. Paul Keedy-Sandra Allison B1. Valerie Townley-Smith - Bob Townley-Smith B2. Glenda Bass-William Delboy  
**Fri Morn 299er Pairs** - 5.0 Tables

AB1/2C1. Marcie Jacikas - Art Jacikas AB1/2 David Payne- Jobie Irvine C2. Henrietta Sasser- Kathy Clark  
**Sat Morn Open Pairs** - 11.0 Tables / Based on 15 Tables A1. Susan Gore - Patricia Bell A2. Aiyandar Bharathi - Tipton Golias B2. Elizabeth Mackenzie= Everett Sweeney C1. Linda Drake- B Haznedar C2. Harlene Michaels - Lawrence Michaels  
**Sat Morn 299er Pairs** - 3.5 Tables AB1. Carlee Lehna-Marcia Chambliss AB2C1. Marcie Jacikas - Art Jacikas C2. S (Jenny) Shuffield - Nadine Pearce  
**Sat Aft Open Pairs** - 11.0 Tables / Based on 15 Tables A1. Martha Sigler - Flora Gillispie A2. Cynthia Stueber - June Eddingston B1. Everett Sweeney-Elizabeth Mackenzie B2/3 Tim Stelly-Martha Oliver B2/3C1. Marianna Carpenter- Karen Jennings C2. Linda Drake- B Haznedar  
**Sat Aft 299er Pairs** - 3.5 Tables ABC1. Bebe Walker - Jannis Duncan ABC2. Marcie Jacikas - Art Jacika

**65TH BEAUMONT SPINDLETOP SECTIONAL CHAMPS**



Thursday Morn Open Pairs A  
Carol McGill, Ed Rasmussen



Thursday Aft Open Pairs A  
Nancy Boothe-Pat McMullin,



Friday Morn Open Pairs A&B  
Jan Walker, Norma Lampkin



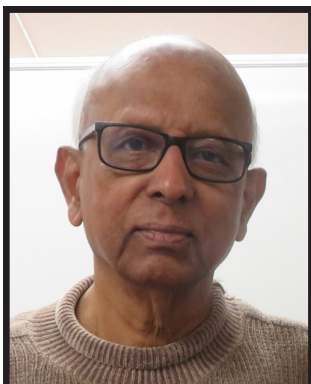
Friday Aft Open Pairs A  
Tipton Golias, Dr. Bharathi



Saturday Morn Open Pairs A&B  
Pat Bell, Susan Gore



Saturday Aft Open Pairs A  
Martha Sigler, Flo Gillispie



**Winner of the John and Nancy Smalley Trophy** awarded to the U201 member who earns the most masterpoints at the spring sectional -  
**Dr. A. Bharathi**



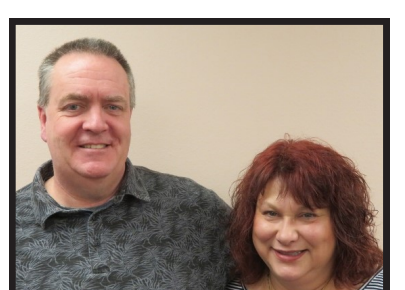
Thursday Morn Open Pairs B  
Linda Briggs, Liz MacKenzie



Thursday Morn Open Pairs C  
Susan Pennington, Joe Kazmar



Thursday Aft Open Pairs B&C  
Carolyn Oliver, E. W. Sweeney



Friday Morn Open Pairs C  
Bob & Val Townley-Smith



Friday Aft Open Pairs B&C  
Marianna & Richard Carpenter



Saturday Aft Open Pairs B  
Liz MacKenzie, E. W. Sweeney



Saturday Morn Open Pairs C  
Linda Drake, Binnur Haznedar



Saturday Aft Open Pairs C  
Karen Jennings, Marianna Carpenter



Thursday Aft 299ers  
Maxine Moye, Rita Moss



Thursday Aft 299ers  
Henrietta Sasser, Sharon Kirkland



Thursday Morn 299ers  
Friday Morn & Aft 299ers  
Saturday Morn 299ers  
Marcie & Art Jacikas



Friday Aft 299ers  
Jobie Irvine, David Payne



Saturday Morn 299ers  
Jannis Duncan, Bebe Walker



Saturday Morn 299ers  
Carlee Lehna, Marcia Chambliss

McAllen Sectional  
McAllen, TX  
Feb 28-Mar 01, 2020  
77 players.  
Total attendance: 80 tables.

- 1 18.61 Bob Derber,
- 2 17.24 Richard Fait,
- 3 12.20 Jane Ann Gormong,
- 4 12.20 James Gormong,
- 5 11.40 Virginia Hixson
- 6 11.40 Donald Hixson,
- 7 11.05 Dennis Heintz,
- 8 8.57 John Johnson,
- 9 8.24 Jose Palmas,
- 10 8.15 Peter Jacquest,
- 11 8.15 Dominique Guay

**Fri Morn A/X Pairs**-11.5 Tables /  
Based on 16 Tables AX1. Richard  
Fait-Bob Derber A2. James Gormong  
-Jane Ann Gormong X2. Jose Palmas  
-Murray Davidson

**Fri Morn NLM Pairs**-4.0 Tables  
BC1. Ronald Ross-Jackie Ross BC2.  
Patricia Cantu-Alberto Fernandez  
**Fri Aft A/X Pairs**-10.5 Tables /  
Based on 14 Tables AX1. Bob Derber  
-Richard Fait A2. Lorna Johnson-  
Andrea Klein X2. John Burgoin-  
Cheryl Macintosh

**Fri Aft NLM Pairs**-3.0 Tables BC1.  
Louise Fenwick-Linton Pointon B2/3  
David Jacobsen-Larry Mitchell  
BC2/3 Linda Ingraham-Joyce Zim-  
mer,

**Sat Morn Open Pairs**-14.5 Tables  
ABC1. Dennis Heintz-Jose Palmas  
AB2. Peter Jacquest-Dominique  
Guay C2. Linda Ingraham-Teddy  
Rhodes

**Sat Aft Open Pairs**-14.5 Tables  
AB1. Donald Hixson-Virginia Hixson  
A2. Tom Berger-Alex Bertrand  
B2C1. Terry Purpus-Gary Parker C2.  
Patricia Cantu-Alberto Fernandez  
**Sun Swiss Teams**-11 Tables  
AB1. Bob Derber-Bev Skulmoski, -  
Richard Fait-Thomas Carnell,  
AB2C1. Barbara Willis, -Dennis  
Heintz-Barbara Engebretson-Orrion  
Roisen

**Unit 225  
East Texas**



**Susan Ford**

**70% Games**

Paula Edwards & Diane Dunn  
had a 71.09% game at ROSE  
CITY DBC on 02-07-20.  
Dorothy McCasland & Liz Guthrie  
70.23% game Pittsburg DBC -  
2/7  
Sammie and Fred Borum scored  
70% at the game today at the  
Sheila Bell DBC - 2/10  
Diane Duncan & Tom Spradlin  
70% game at LDBC - -2/29  
Charles Ford & Bonnie McGee  
73.61% game Dottie Pirkle DBC  
- 3/5/20  
Mary Bartley & Brenda Baker  
had 70.83% game at RCDDBC on  
March 4. Longview DBC

We had fourteen tables of Swiss  
teams at the Piney Woods NLM 0  
-750 Tournament. Bridge is alive  
& well in Longview today, Febru-  
ary 15th!  
I wish to express a great debt of  
appreciation to the 39 Longview  
DBC & Unit 225 members who  
graciously made donations to

defer  
the cost of the LDBC studio  
monthly lease payment & electric  
bill during the Covid-19 pandem-  
ic. Our club has been in existence  
since Mike Graham took the reins  
in 1984, the club games have  
been held at rented facilities. The  
generosity by our club members  
as well as players from other Unit  
225 clubs, have allowed us to  
keep afloat during this crisis.  
Thank you all.

**Rose City DBC**  
Annette Crawford recently ob-  
tained Ruby Lifemaster rank.

**SHEILA BELL DBC**  
On Monday, March 9, 2020 the  
SBDDBC in Texarkana held a St.  
Patrick's Day celebration and spe-  
cial game in homage of St. Pat  
and, also, to honor our Ace of  
Clubs Winner and our recent  
Bronze Life Master players.

**Ace of Clubs Winner:**  
Carol Ann Sanderson

**Bronze Life Masters:**  
Fred Borum, Sammie Borum, Jeff  
Brown, Kat Young, Doris Hoback  
Curtis Bourland Vicki Angel

We had a 7 table Club Champion-  
ship game.

**The Bridge Studio at Cedar  
Creek**

Jo Ellen Wade & Kyle Planas  
won 1st E/W in a Pairs game at  
the Longview Sectional in Febru-  
ary. Then they teamed with Phil  
& Lynda Pillans to place in the  
Swiss. Congratulations, guys!

We held our 3rd annual Mardi  
Gras Monday the day before Fat  
Tuesday. The word is spreading  
and we had players from all over  
our unit and beyond, from Tyler  
to Waxahachie. Most of us wore  
costumes or masks, there was an  
abundance of Cajun food for  
lunch and of course, we had King  
Cake and bread pudding for des-  
sert.

Phyllis Alvarez started teaching  
12 new students Easy Bridge les-  
sons in February. Recently retired  
consultant Deb Pascoe was com-  
pletely new to bridge and shared  
with me, "I needed something to  
replace the mental stimulation  
that I was accustomed to and  
bridge fit the bill. The people at  
my local club are supportive and  
welcoming. They cheer me on  
when I do well and encourage me  
when I disappoint myself. Bridge  
is more than a game. Each hand is  
a conversation conducted in a  
unique language that only Bridge  
players understand. Fascinating!  
This is a game and a community  
that I will enjoy for years to  
come." From Phyllis: "It was a lot  
of fun and a learning experience  
for me as well. I really liked the  
Easy Bridge approach to learning  
bridge. I think we all had a lot of

fun together. It was cool to watch  
some of the players "get hooked"  
on bridge."

Due to the Covid-19 CDC guide-  
lines, the Cedar Creek Library  
Benefit had to be postponed along  
with temporarily closing the stu-  
dio. We are looking forward to  
reopening as soon as it is safe for  
everyone.

**Pittsburg DBC/Lake Cypress  
Springs BC-**

Pittsburg DBC- Held its weekly  
Tuesday and Friday games till  
March 13. Linda Harrison of-  
fered free mini-lessons prior to  
each game with a good response.  
Our players seem to appreciate  
the "Staying Connected Team"  
that was recently formed to keep  
in touch with our players by  
phone, text, email or Facebook.

Lake Cypress DBC -- The March  
1st Wine & Cheese game was a  
St. Patrick's celebration with eve-  
ryone carrying out the theme by  
wearing green. We had nine ta-  
bles that had lots of fun and great  
food!

**Nannie's Bridge House**

**Van Zandt County Duplicate  
Bridge Club**

We are all doing our best to stay  
healthy during this time of nation-  
al crisis. When we had to tempo-  
rarily close Nannie's Bridge  
House due to Covid-19, we were  
fortunate that the limited number  
of games we did get to play were  
all special games that awarded  
"healthy and robust" overall  
points. All of the February games  
benefited ACBL's Educational  
Foundation Fund. We only had  
two games in March; one was a  
club championship game and the  
other a District Charity game. So  
even though our bridge time to-  
gether was cut short, the time was  
well spent making extra points.

We are looking forward to seeing  
our bridge friends in the near fu-  
ture when we get to continue  
playing the greatest game in the  
world!

**Dottie Pirkle DBC**

Like all the other clubs in Unit  
225 we are missing seeing our  
friends and playing our favorite  
thinking game. It is very im-  
portant to us that we all stay  
healthy and do our part to help  
however we can in this time of  
national crisis. Read your Bridge  
Bulletin, books, online infor-  
mation, use BBO. Call or text or  
email or even snail mail your  
bridge friends to check on them  
and even send a joke or some-  
thing funny you remember about  
a time at the bridge table. Stay up

beat!

**Unit 225 News from Presi-  
dent Harrison**


Fortunately, Unit 225 held its  
January and February games as  
scheduled. Then came the Coro-  
navirus, so the March unit game  
was canceled. Per the March 18th  
email from ACBL, "Based on the  
most recent recommendations  
from the Centers for Disease Con-  
trol, ACBL Management strongly  
recommends that your club close  
at least until May 11, 2020. This  
date may be updated as infor-  
mation becomes available. The  
health and well-being of our club  
players, their friends and family  
and the community at large is our  
primary concern." Given this, of  
course, the April 18th Unit 225  
Awards Luncheon, Program and  
game were also canceled and may  
be rescheduled later.

Also, District 16 has canceled the  
District Grand National Team  
Finals until the Fall Nationals in  
Tampa, in November.

The health and safety of each Unit  
225 player and their families are  
our number one priority. Unit  
225 will get back to bridge when  
it is safe. In the meantime, we  
can all do our part by: staying in,  
avoiding crowds, getting your  
bridge books out, keeping in  
touch by phone, text or email with  
bridge friends and following the  
CDC guidelines. Unit 225 players  
were also encouraged to utilize  
BBO to play online.

Stay safe and healthy,  
Linda Harrison  
Unit 225 President

**Unit 233  
Central Texas**



**Mary Adams**

**June 2020 Unit 233 Scorecard**

I wrote most of this article just  
after the Temple Tournament  
when Corona Virus was just a  
brief article in the paper and in  
the news. That time seems so  
long ago. Now I think of all the  
relationships I have made through  
the game of bridge and how not  
seeing those special people on a  
regular basis has made me sad.  
Most of all, I regret not being able  
to attend the funerals of the  
spouses of three of our valued  
bridge friends---Belva, Dick, and  
Pat---and to give them all a genu-  
ine hug. We have all followed  
with love and concern their expe-  
riences. I also miss more mun-  
dane but meaningful connections:  
decisions about where to go for  
dinner, having "just one more  
bite" of Janice's cobbler or Carol  
Ann's cookies or cheese dip,

hearing about the monthly birth-  
day luncheon, hearing, "I'm going  
to quit this game" after a bad re-  
sult (and knowing and hoping it  
probably isn't true), looking at  
countless wonderful pictures of  
grandchildren, hearing about va-  
cations---and so much more.  
Bridge is DEFINITELY not just a  
game!!! It has been a vehicle for  
providing a real community in the  
best sense of the word. Bless you  
all!

The Temple Tournament  
is over with so many memories  
and people to celebrate. First of  
all, our co-chairpersons Carol  
Ann Wadley and Lynn Sykes did  
a marvelous job coordinating all  
of the activities including hand-  
ling food service for an unusu-  
ally huge crowd on Sunday! The  
Vickers family again served a  
delicious lunch! And, speaking of  
lunches, the tournament also pro-  
vided free Subway lunches on  
Friday and Saturday. This special  
treat allowed for more social time  
as well as negating the need to  
look for food elsewhere. Ann  
Fulcher and Maretta Dieterman  
served as Hospitality Co-chairs---  
in other words, the unobtrusive  
powers of the shopping, the kitch-  
en, and food tables. Jan Hart  
again served as our Partnership  
Chair---and I recall one such  
"arranged partnership" beating  
me soundly! Malissa Baugh  
makes her decorating skills seem  
deceptively "easy" when I know  
all of the beautiful Valentine ar-  
rangements and extra touches  
reflect her generosity of spirit,  
special talents, and work ethic! So  
special! Gene Thompson did not  
play the first two days but made  
all of the hands that we played,  
ran errands, and took over the  
handling and storage of the unit  
tables---taking over from Harry  
Kenney who has (again, unobtru-  
sively) taken care of storing, set-  
ting up, and delivering out unit  
"furniture" for years and taking  
over for Raby Smalley who was  
perhaps our original "table and  
chair-man." I have so often taken  
for granted this service for our  
unit, and I want to thank these  
men for their special contribu-  
tions. Great job by all. The list  
of the winners was included in the  
last issue.

Since our Unit 233 is now down  
to only one tournament a year, the  
Waco tournament next year will  
be held in Temple at the CAC the  
second week-end in February!  
Yes---this is correct! The Waco  
Bridge on the Brazos will be in  
Temple---perhaps as Bridge on---  
no near---Lake Belton or, more  
poetic, Bridge on Bird Creek.  
Any other nominations? Barbara  
Kirstein is the tournament chair  
with Melody Euler again direct-  
ing. Please let Barbara know of  
your willingness to volunteer to  
help! Plans are underway to have  
the 299er tournament in Waco  
this year rather than Temple.

One of the highlights of the tour-  
nament was the recognition of

Lynn Sykes as the winner of the Unit 233 All Star Award that was formally presented at the Houston Regional Tournament in early February. Please read her nomination letter at the front of the SCORECARD. Wow---did she ever deserve this special recognition!! Other honorees were Ethel Corlett and Susan LaFountain who were selected for the Unit 233 Goodwill Awards, and I am including their nomination letters below:

"For as long as we can remember, Ethel Corlett has, without bringing attention to herself, been at the center of providing services and hospitality to our entire unit. She has chaired the Waco Bridge on the Brazos Tournament at least three times and has brought food to any bridge gathering---including those in Temple. Her support is prominent in tackling even the most menial jobs. While in Temple at either the Christmas party of the tournament, she will not leave until all of the "clean up" and "straightening up" is complete. Her insistence upon helping even when it is "not her job" is an example for all of us. Even though Ethel is one of the best players not only in our unit but also the entire District 16 (and ACBL in general!!), she is the first to congratulate other winners. Her involvement, along with her husband Tom Corlett, has been crucial to keeping the Sul Ross Bridge Center games ongoing, and we are so grateful." In regard to the "do over," unit President, Barbara Kirstein adds, "The walls are bright with players' pictures and names. She is the chief coffee maker which is big time for our players who might get grumpy if the pots get empty. We now have a microwave. The rooms once used to store chairs and our computer are clean and organized. She calls people who are home bound or in the hospital and delivers messages to us at bridge. She even goes downstairs to fill the ice buckets and, along with Tom, looks up the entire building because other users have already left---and all this while playing and setting you 2 tricks at the same time!"

Just last week several other Temple players and I attended a board meeting and then played bridge at Sul Ross. We were thrilled to be there as the

club honored and celebrated Ethel's achieving her Diamond Life Master designation! We sang a spirited (and mostly on key) "Happy Diamond Life Master" adapted version led by Bill Parrish---and then ate the delicious cake brought by Bill and Lenora! Great fun---even though Ethel set me by not 2 but 5 tricks!!!

I had an opportunity to have great visits with Susan LaFountain at our tournament. I have always really liked Susan---her humor, her great playing ability, and her support of her fellow players---not to mention her bridge expertise---(she came in First Overall for the Saturday AM Pairs and Sunday Swiss Teams in the tournament)!!! She serves as the Partnership Chair (informal and volunteer!) for Waco games which is a far more involved job than most of us would imagine. The results, however, are great in obvious ways as well as those we usually do not realize. Mainly, she is involved with people as they pursue our wonderful game. According to Barbara, "She knows your schedule better than you do!" She shuffles cards, is often a "stand-in" for managerial chores, and, even with her limited mobility, is an example for us to keep up with each other and to keep supporting our games. I love eliciting stories from Susan about the history of duplicate bridge in Central Texas. Her memory is fantastic as is her sense of humor about the past---and the present!

And---important milestones! We have two new Life Masters: Carol Ann Wadley (Houston Tournament) and Margaret (Peggy) Downey (Temple tournament)!! This is such an important milestone and every single payer who has reached this level can remember where and with whom they were playing!

We also say farewell to Janis Bodin who is moving back to her Cajun state after 14 years in Central Texas---but we had her for 11 more years than she originally planned! We wish her well. Carol Ann Wadley has been appointed to serve the remainder of Janis' term. Carol Ann just rotated off the board and did not have much of a "vacation." We appreciate her dedication.

We were sad to hear of

the death of our bridge friend Martha McKinney who had suffered from Alzheimer's during her last years. She had lived a full life including her many years as an accomplished artist. She served many local organizations including CASA and the YMCA.

Hopefully, by next issue, I can say again, "See you at the Bridge Table."

Wichita Falls Bridge Unit 353 - Carolyn Bell



We are living in a unique time of isolation from our bridge friends. I know that we are missing our bridge friendships, the friendly competition, and the physical and mental challenge of playing the game of bridge. I am praying for the health and well-being of all my bridge friends and their families. I know that this situation is difficult but we must protect ourselves and each other from the Coronavirus. I hope everyone is able to keep up their practice by playing bridge online. If anyone needs anything please reach out and ask for assistance. Life does forward and we will get through this time of isolation. For now, stay safe.

I have coped with anxiety most of my life. I want to share some ways to help you find balance and ease during this unprecedented time of isolation. Create a schedule for your day. Accomplish something - even if it just making your bed or cleaning out a stack of magazines. Find a pattern of eating so that you do not end up snacking all day. Go outside and get some fresh air. Take a walk around your yard. Listen to some favorite music. Notice your thoughts and choose positive words to say to yourself. "Everything is going to be alright." "This, too, shall pass." Sit taller in your chair and take some deep breaths. Choose a breath prayer - remember to inhale on

the first phrase and exhale on the second. Choose one that speaks to you: "Be still, and know that you are God.", "When I am afraid, I will trust you.", "There is not fear, in love.", "Nothing can separate me, from the love of God.", and "You are my refuge, and my strength."

It is good to celebrate the achievement of others. Each year, ACBL units present the Ace of Clubs and Mini-McKenney awards to unit members. The Ace of Clubs certificates are awarded to players in each unit who earn the most black master points during the previous year. The Mini-McKenney medals are awarded to players in each unit who earn the most masterpoints of any color during the previous year. Our club recognized the following members who won both the Mini-McKenney and the Ace of Clubs Award for 2019: Robert Kerr (0-5), Janet Bergman (20-50), Betsy Smith (50-100), Martin Blecha (100-200), Marsha May (200-300), Patricia Robinson (300-500), Nancy Purcell (500-1000), Wand Hughes (1000-1500), Margaret Kirkland (1500-2500), Kathleen Brown (2500-3500), Anne Halsell (3500-5000), Susan Couch (5000-7500).

Our thought and prayers were with Babara Kleinecke in the death of her husband, Gail Simpson in the death of her husband, and Betsy Smith as she went through an upper respiratory illness. We will continue to pray for these people as well as our entire bridge unit for the health and well-being of all members of our bridge unit.

The Unit Game Championship Winners for February 9, 2020 were Cathy Zinn and Trudy Downey with a score of 68.75% and Dave Hertzog

and Tommi Johnson with a score of 61.01%. The Unit Game Championship Winners for February 23, 2020 were Bennie Young and Wanda Hughes with a score of 62.50% and Dave Hertzog and Tommie Johnson with a score of 59.26%.

The High Percentage Games for Suite 16 Monday Games in February 2020: Anne Halsell and Nancy Purcell with a score of 68.45%; Kathleen Brown and Judy Lucas with a score of

63.00%; And Halsell and Nancy Purcell with a score of 61.00%. Thursday High Percentage Games: Gladys Barley and Nancy Purcell with a score of 65.28%; Patricia Robinson and Patty Hofer with a score of 62.50%; Leon Vaccarella and Margie Brown with a score of 61.00%. Friday High Percentage Games: Kathleen Brown and Betsy Smith with a score of 65.28%; Anne Halsell and Dee McKinley with a score of 64.58%; Gail Simpson and Margie Brown with a score of 61.98.

The Suite 16 Masterpoint Leaders for February 2020 were Margaret Kirkland with 3.56 masterpoints; Kathleen Brown with 3.48 masterpoints; Patty Hofer with 3.36 masterpoints; Wanda Hughes with 3.00 masterpoints; and Nancy Purcell with 2.91 masterpoints.

The High Percentage Games for the Bridge Club Tuesday Games in February 2020: Anne Halsell and Margaret Kirkland with a score of 66.25%; Anne Halsell and Margaret Kirkland with a score of 64.59%; Anne Halsell and Margaret Kirkland with a score of 62.09%. Saturday High Percentage Games: Gladys Barley and Nancy Purcell with a score of 65.63%; Martha Harvey and Marsha May with a score of 65.50%; Anne Halsell and Suzanne Sosa with a score of 61.66%.

The Bridge Club had many games in February to receive black and red masterpoints. The top two highest leaders for the games were: ACBL Wide International Fund Game Leaders were Anne Halsell and Suzanne Sosa with 1.59 black masterpoints and 1.60 red masterpoints; The Club Education Foundation Game Leaders were Anne Halsell and Margaret Kirkland with 2.48 black masterpoints; Gladys Barley and Nancy Purcell with 2.33 black masterpoints.

Until we meet again - I will be at home.

## Team # Theory Lives On by Ellen Hessel

Gary Powell was a well known, highly skilled player from Austin, who sadly in October 2018 passed away quietly and unexpectedly. He is, indeed, sorely missed by all who knew him. Now, Gary was what you would call an extremely deep thinker. So, unlike many players who sometimes consider at length before making a play, one could be pretty sure when Gary started to ponder a bridge puzzle that he was going to get it right. (He always seemed to against me.) It's not clear when exactly Gary came up with his Team # Theory, (his lovely wife, Marcia probably remembers) but he first explained it to me sometime in the early 90's. These were the days before the now popular bracketed Swiss teams, so on Sunday of a tournament the event was always an open Swiss team, and everybody played everybody, usually resulting in quite a large number of entered teams. If you love bridge as most of us do, then you probably like math and Gary was no exception; he enjoyed the numbers. Gary's theory was that the team number that you were assigned was directly related to your final standing in the event. He thought that you could somehow manipulate your team number in some mathematical way to come up with your end result, either in your final status or number of matches won or lost. So, let's say your team number was 156. Some combination

of those three numbers held your fate. It could be that you would end up 12<sup>th</sup> (1+5+6=12), or 11<sup>th</sup> (5+6=11, 11x1=11) or maybe 10<sup>th</sup> (6+5=11, 11-1=10) or possibly 1<sup>st</sup> (1+5=6 and 6/6=1) or that you'd win or lose six matches (1+5=6) or two matches (6-5=1, 1+1=2.) There aren't endless possibilities, but there are actually quite a few more, and once you get started thinking about it, well, it can actually become a bit distracting but fun. I used to be amazed that you could almost always find some truth in it somewhere, but now I'm just good with it, though I do endeavor not to know my team # until late in the event if possible. The last time I played face-to-face bridge was the March 15<sup>th</sup> (Beware) Sunday Swiss at the Kerrville sectional. I checked our team # just before the last match as we were having a pretty good day, so didn't think it could hurt. Sure enough, our Team # was 51. We were getting ready to play the 6<sup>th</sup> match and we'd won the first 5. As I sat down to play, I couldn't help but think that we'd go 6 and 0 (hopefully), or win 5 and lose 1, and that once again the theory had already proven true. Yep, we were soundly beaten that last match. So here's thinking of you, Gary, you're ever in my head.



The Hall of Fame was started by the Bridge World magazine in 1964 with founding members Ely Culbertson, Charles Goren, Harold Vanderbilt, Oswald Jacoby, Milton Work, Sidney Lenz, Waldemar von Zedtwitz, Howard Schenken and Sidney Silodor.

When the magazine discontinued its work on the hall, no members were added until the ACBL re-established the program in 1995. Members have been added each year since then.

We note that our last list inadvertently omitted **Mike Passell**, clearly a great player and personality in bridge from right here in District 16. Many apologies Mike.

1995 Bobby Wolff	2008 George Rosenkranz
1997 Jim Jacoby	2009 John Gerber
1999 Bob Hamman	2009 Mike Passell
1999 Bobby Goldman	2010 Paul Hodge
2000 Sidney Lazard	2014 Peggy Sutherland
2001 Bobby Nail	2016 Eddie Wold
2002 Ira Corn	2019 Bart Bramley