

American Contract Bridge League District 16 SCORECARD

Bridge News Bulletin for The Texas Regional Conference

San Antonio, Texas Volume 51 No 6 November/December 2019

Nancy Strohmer Wins 2019 Oswald and James Jacoby Service Award



Scott Humphry, Chairman of District 16 Oswald & James Jacoby Service Award, presented the Oswald & James Jacoby Service Award for 2019 to Nancy Strohmer at the Dallas Labor Day Regional. The award, established in 1982, is given annually for outstanding contribution to the promotion of bridge in ACBL District 16 and is announced at the Labor Day Regional Tournament. The honor is given to someone who has worked diligently at the unit level and has risen to recognition at the district level.

Nancy was born in Tulsa Oklahoma and raised in an Air Force Family. Her mother was a social bridge player and taught Nancy when she was in her late 30's. In 2003 Nancy and Hans were on a cruise that introduced them to duplicate bridge. In 2006, they started playing on a regular basis and they were both hooked.

Nancy has served on the unit 174 board for the many years. In that time she has served as President, Vice President, Secretary, Publicity Chair, Charity Coordinator, ABA/ACBL Pair Game Chair, and she co-chaired and chaired tourna-

ments including the 2016 and 2018 Lone Star Regional, one of the largest in the ACBL. Besides these responsibilities, in 2012 Nancy created a newsletter for Unit 174 website that included Events and Classes. She has continued as editor until 2018 when she passed the baton.

Additionally, Nancy is a lifetime member of the ACBL National Goodwill Committee, and in 2016 was elected to the ACBL National Charity Foundation. She currently serves as District 16's 1st Vice-President, Unit 174's President, and 2018 chair for our Lone Star Regional.

She was selected for Unit 174's 2018 Texas Star Award and was instrumental in establishing the D16 Teacher Appreciation Day.

At unit 174 tournaments the board of Unit 174 wears a large button that says, "Ask Me", and players will ask! It's a great way to communicate with people in our unit. However, our players seem to think Nancy's is permanent. If she doesn't have an answer at the time she will have it within an hour. Nancy is dedicated to the growth of our unit, and working with youth to learn bridge including sending her grandchildren to bridge camps, and promoting Mini Bridge. Every single week you will see Nancy at different bridge clubs and community centers in Houston, none of them close to one another. She will always have a huge smile, making players feel at home and ready to help. She always goes the extra mile. If we just had a few more Nancys!

Oswald and James Jacoby Award Winners

2018 Tomi Storey, Dallas
2017 David Pennington, Waco
2016 Paul Cuneo, Houston
2015 Charles Price, Dallas
2014 Martha Decou, Corpus Christi
2013 Carol Schoenhals, Lubbock
2012 Lew Levy, Houston
2011 Larry Davis, Austin
2010 Tom Corlett, Waco
2009 Bert Onstott, Houston
2008 Ira Hessel, San Antonio
2007 Dewitt Hudson, Fort Worth
2006 Rosemary Kelley, Austin
2005 Toni Snow, Houston
2004 Betty Starzec, Houston
2003 Al Lochli, San Antonio
2002 Scott Humphrey, Austin
2001 Tom Hughes, Fort Worth
2000 Mary Ross, Corpus Christi
1999 Arlene Weingarten, Houston
1998 Eric Snow, Houston
1997 George & Leah Olivari, Corpus Christi
1996 Howard Wilkins, Abilene
1995 Barry Hagedorn, Houston
1994 Shirley Pagan, Corpus Christi
1993 Jacque Tucker, San Antonio
1992 Henry Baer, Dallas
1991 Mary Williams, Austin
1990 Gerrie Owen, Dallas
1989 Dan & Joan Morse, Houston
1988 Jim Downs, Houston
1987 Judy Jacoby, Dallas
1986 Cisse Horton, San Antonio
1985 Sue Barber, San Angelo
1984 Ann Carb, Fort Worth
1983 Joyce Cook, Houston

Rebecca Brown



District 16 President

I begin with a wish that all our friends in Southeast Texas who were hit so hard by Tropical Storm Imelda have recovered their peace and property. When life and limb are threatened, it is a small matter to think about Regionals, but, nonetheless, I must note that Unit 201 had to cancel its Beaumont Regional scheduled to begin on September 23. As you may know, most units "live" on the revenue generated from a regional. Many units only have regionals scheduled every three or four years. (Districts "own" the regionals and allocate them to units; very small units have no regionals allocated to them and rely on sectionals for their ongoing financial needs). The District Board is exploring ways we can help Unit 201.

For the first time in many years, our last Board meeting (held on August 31 in Richardson during the Regional) was quite brief, indeed without controversy! Our minutes will be available for review on the D16 website, as always. At the meeting,

it was announced that the ACBL Board of Governors representatives from District 16 are Betty Starzec, Bob Morris and Dan Leightman. You will recall that the Board of Governors is being re-focused by the ACBL Board of Directors to deal with bridge-related matters, freeing the BOD to deal with strategy and governance.

You have probably also read in the ACBL Bulletin about the ACBL's elimination of the local positions of Unit Recorder and Unit Disciplinary Chair. The office of the National Recorder has been busy clarifying the roll-out of the expanded role of the districts, especially the District Disciplinary Chair and District Recorder, in dealing with complaints of violations,

Scorecard reminder: We are still in a trial period for evaluating Scorecard distribution methods. If your Unit has had a change of preference, you may make a different choice, i.e., to go digital instead of paper copy or vice versa. Please just let either Jim Bauer or me know.

Wishing you all a healthy and happy holiday season,

SEE YOU AT THE TABLE!

Paul Cuneo



District 16 National BOD

ACBL and the ACBL Educational Foundation have jointly launched a new website TryBridge.org which is designed to attract people to learn and play bridge. It went live in October and early indications are that it will be successful.

The key to long term success will be linking these people to teachers who offer lessons to people who are new to bridge or returning after a long hiatus and then inviting them to play after the lessons. ACBL has updated the "find a teacher" menu on their website so teachers should provide current information to be made available for these new people.

2019 is shaping up to be a good year for ACBL. Financially it will be a success as expenses are down and revenues are up. A major project Live for Clubs is nearing completion and the implementation phase is underway. This system has been designed to place the masterpoint calculations and reporting as well as the club financial reporting system in the cloud to replace those functions in ACBL Score. Players will be able to receive an e-mail containing their

results just a Live does that for tournaments. It will also offer hand records where clubs have them and analysis of those boards.

Development is underway to replace the similar ACBL Score systems used for tournaments and that should be complete in early 2021.

The Ed Foundation is beginning a pilot program to bring bridge to our active military forces. Patty Tucker who developed Learn Bridge in a Day is working with Col. Lon Sunshine on the pilot. Greg Johnson from Clear Lake area of Houston is working to pilot bridge with Boys and Girls Clubs in the Chicago area. Greg is a retired astronaut and Ed Foundation trustee.

I'm busy preparing for board meetings of both ACBL and the Ed Foundation in San Francisco. Both organizations are in better position this year and are poised for good years in 2020.

As we enter the Holiday Season, I want to wish each of you a joyous holiday period as you celebrate with friends, family and the bridge community. A big "Thank You" to all of our volunteers who serve in the clubs, units and at the district and national levels. You are critical to the success of bridge and I appreciate all you do!

North American Pairs District Final

Roxie Tom



District 16 NAP Coordinator

Make your plans to play in the NAP District 16 finals in San Antonio, January 18 and 19. The district board voted to allow everyone who qualifies at the club level to play in the district final. District finals award gold points for section firsts and overalls. Flight C is 25% gold for overalls. Other masterpoints in all flights are red.

District 16 placed 2nd in the number of tables in play for Flt B at the club level qualifications and received the enhanced subsidy to Nationals in Flight B for the 2019-2020 North American Pairs in Columbus, OH.

There will be three pairs from A, four from B and four from flight C who will qualify to represent District 16 at the Columbus Spring Nationals in March. The district is adding money to the amount ACBL awards. The total stipend for each qualifying player in each pair is as follows:

Flight A: 1st \$800 2nd \$500 3rd \$300
Flight B: 1st \$800 2nd \$800 3rd \$500 4th \$300
Flight C: 1st \$800 2nd \$500 3rd \$300 4th \$200

In addition to financial stipends for the top finishers, all the participants enjoy the best competition available on the district calendar. Any members who qualify to go to the nationals, check with your unit to see if they provide a stipend.

Many thanks to all the Unit Coordinators for helping to promote this great event. If you have any questions please email

RoxieTom D16 NAP Coordinator, rtom85@yahoo.com.

AMERICAN CONTRACT BRIDGE LEAGUE

DISTRICT 16 SCORECARD

Bridge News Bulletin for
The Texas Regional Conference
10710 Tybalt Trail
San Antonio, TX 78213

District Highlights

- 1/ Puerto Vallarta Regional Nov 4-10
- 2/ San Antonio NLM REGIONAL Nov 13-18
- 3/FORT WORTH NLM REGIONAL Feb. 21-23
- 4/ Houston Regional Feb 3-9 (16)
- 5/ NAPS San Antonio Jan. 18-19
- 6/ STaCs during Dec

Moving Up

174	Cynthia	Bell	The Woodlands	Life Master
183	Phillip	Brantley	Mansfield	Life Master
176	Fred	Curtis Jr	Garland	Life Master
174	Vicki	Dailey	Houston	Life Master
197	Jane	Giddens	Lubbock	Life Master
176	Peter	Hylak	McKinney	Life Master
172	Gerald	Irion	Kerrville	Life Master
176	Sam	Norvell	Dallas	Life Master
225	Sandra	O Bannon	Tyler	Life Master
176	Clint	Pruett	McKinney	Life Master
174	Janet	Siefert	Houston	Life Master
225	Clifford	Smith	Marietta	Life Master
176	Erica	Walker	Dallas	Life Master
183	Stephen	Wuller	Mansfield	Life Master
174	Cynthia	Bell	The Woodlands	Life Master
183	Phillip	Brantley	Mansfield	Life Master
176	Fred	Curtis Jr	Garland	Life Master
174	Vicki	Dailey	Houston	Life Master
197	Jane	Giddens	Lubbock	Life Master
176	Peter	Hylak	McKinney	Life Master
172	Gerald	Irion	Kerrville	Life Master
176	Sam	Norvell	Dallas	Life Master
225	Sandra	O Bannon	Tyler	Life Master
176	Clint	Pruett	McKinney	Life Master
174	Janet	Siefert	Houston	Life Master
225	Clifford	Smith	Marietta	Life Master
176	Erica	Walker	Dallas	Life Master
183	Stephen	Wuller	Mansfield	Life Master
207	Cindy	Bell	Austin	Life Master
207	Tom	Bell	Austin	Life Master
174	Richard	Labouliere	Seabrook	Life Master
172	Leigh	Primerano	Helotes	Life Master
183	Phillip	Brantley	Mansfield	Bronze LM
174	Vicki	Dailey	Houston	Bronze LM
237	Wayne	Tindall	San Juan	Bronze LM
237	Dick	Volkman	Mercedes	Bronze LM
207	Glenn	Zauber	Georgetown	Bronze LM
183	Phillip	Brantley	Mansfield	Bronze LM
174	Vicki	Dailey	Houston	Bronze LM
237	Wayne	Tindall	San Juan	Bronze LM
237	Dick	Volkman	Mercedes	Bronze LM
207	Glenn	Zauber	Georgetown	Bronze LM
201	Kris	Cherry	Orange	Bronze LM
172	Cindy	Cummins	Seguin	Bronze LM
172	Diana	Drenner	San Antonio	Bronze LM
174	Deborah	Jackson	Spring	Bronze LM
174	Michael	Kern	The Woodlands	Bronze LM
174	John	Montgomery	Tomball	Bronze LM
174	David	Richard	Fulshear	Bronze LM
174	Carole	Samuels	Houston	Bronze LM
174	Helen	Wren	The Woodlands	Bronze LM
197	Will	Anthony	Lubbock	Silver LM
176	Susan	Bates	Dallas	Silver LM
207	Lazaro	Brener	Austin	Silver LM
207	Dolline	Burton	Georgetown	Silver LM
207	Robert	Burton	Georgetown	Silver LM
174	Kristy	Garrison	Spring	Silver LM
207	Jarek	Langer	Austin	Silver LM
172	Jo Ann	Robertson	Bulverde	Silver LM
174	Aruna	Sane	Sugar Land	Silver LM
197	Will	Anthony	Lubbock	Silver LM
176	Susan	Bates	Dallas	Silver LM
207	Lazaro	Brener	Austin	Silver LM
207	Dolline	Burton	Georgetown	Silver LM
207	Robert	Burton	Georgetown	Silver LM
174	Kristy	Garrison	Spring	Silver LM
207	Jarek	Langer	Austin	Silver LM
172	Jo Ann	Robertson	Bulverde	Silver LM
174	Aruna	Sane	Sugar Land	Silver LM
183	Carol	Black	Grapevine	Silver LM
174	Byron	Fackenthall	Houston	Silver LM
233	Donna	Gerber	North Venice	Silver LM
174	Tonya	McNabb	Houston	Silver LM
225	Shreedhara	Ramarathnam	Tyler	Silver LM
176	Richard	Wittrup	Frisco	Silver LM
207	Clara	Wood	Austin	Silver LM
174	Anne	Adams	Houston	Ruby LM
174	Lynne	Andress	Houston	Ruby LM
209	Kathryn	Evans	Midland	Ruby LM
172	Stephen	Hoffman	Fair Oaks Ranch	Ruby LM
174	Hugh	Humphries	Bellaire	Ruby LM
176	Marie-Anne	Johnson	Dallas	Ruby LM
353	Dee	McKinley	Wichita Falls	Ruby LM
207	James	Moody	Austin	Ruby LM
176	E J	Nowak	McKinney	Ruby LM
174	Ima Ruth	Wood	Friendswood	Ruby LM
174	Anne	Adams	Houston	Ruby LM
174	Lynne	Andress	Houston	Ruby LM
209	Kathryn	Evans	Midland	Ruby LM
172	Stephen	Hoffman	Fair Oaks Ranch	Ruby LM
174	Hugh	Humphries	Bellaire	Ruby LM
176	Marie-Anne	Johnson	Dallas	Ruby LM
353	Dee	McKinley	Wichita Falls	Ruby LM
207	James	Moody	Austin	Ruby LM
176	E J	Nowak	McKinney	Ruby LM
174	Ima Ruth	Wood	Friendswood	Ruby LM
254	Albert	Kocourek	Laredo	Ruby LM
225	Gayle	Mauldin	Hallsville	Ruby LM
172	Carole Lee	O'Connor	San Antonio	Ruby LM
207	Sanae	Zaveloff	Austin	Ruby LM
174	Debi	Balter	Houston	Gold LM
207	Jerry	Barrett	Austin	Gold LM
174	Charles	Collins	Shenandoah	Gold LM
187	Ronald	Francey	Corpus Christi	Gold LM
225	Shirley	Shelton	Longview	Gold LM
183	Winifred	Simon	Fort Worth	Gold LM
225	Nell	Velvin	Athens	Gold LM
174	Debi	Balter	Houston	Gold LM
207	Jerry	Barrett	Austin	Gold LM
174	Charles	Collins	Shenandoah	Gold LM
187	Ronald	Francey	Corpus Christi	Gold LM
225	Shirley	Shelton	Longview	Gold LM
183	Winifred	Simon	Fort Worth	Gold LM
225	Nell	Velvin	Athens	Gold LM
183	Khalifa	Ahmed	Denton	Gold LM
233	Puddin	Barnes	Brenham	Gold LM
172	George	Fillis	San Antonio	Gold LM
172	Karen	Fillis	Shavano Park	Gold LM
172	Bill	McCarthy	San Antonio	Gold LM
174	Thomas	Rush	Houston	Gold LM
224	Beverly	Walker	Abilene	Gold LM
183	Hjalmar	Beijl	Denton	Sapphire LM
207	Harry	Ingham	San Marcos	Sapphire LM
174	Stephen	Reichek	Houston	Sapphire LM
172	Beverly	Santos	San Antonio	Sapphire LM
183	Hjalmar	Beijl	Denton	Sapphire LM
207	Harry	Ingham	San Marcos	Sapphire LM
174	Stephen	Reichek	Houston	Sapphire LM
172	Beverly	Santos	San Antonio	Sapphire LM
174	L	Laird	Sugar Land	Diamond LM
172	Richard	Ware	New Braunfels	Diamond LM
174	David	Henke	Houston	Emerald LM
176	Michael	Murphy	Dallas	Platinum LM

NOVEMBER

Galveston	1-3
PUERTO VALLARTA REGIONAL	4-10
Houston 299er	7-10
Richardson (last issue)	7-10
Austin NLM REGIONAL	9-10
SAN ANTONIO NLM REGIONAL	13-18
CHANGE McAllen (15)	29-Dec 1

DECEMBER

STaC Unit 174	2-8
Austin 199er	7-8
STaC Units 176, 183	9-15
STaC Units 172, 207,233	16-22
SAN FRANCISCO NABC	Nov 28-Dec 8

JANUARY

Austin (13)	2-5
Richardson (8)	9-12
San Antonio (5)	16-19
San Antonio NAPS (5)	18-19
Spring 299er	23-26
Mazatlán	23-26
Denton NLM	24-26
Harlingen (15)	24-26
San Miguel de Allende	30-Feb 2
<i>Ajiic</i>	<i>31-Feb 3</i>
Dallas 299er	31-Feb 3

FEBRUARY

Austin NLM	1-2
HOUSTON REGIONAL (16)	3-9
Longview NLM/750	14-15
Temple	14-16
Fulton (Rockport)	14-16
Ajjiic	20-23
San Angelo	21-23
FORT WORTH NLM REGIONAL	21-23
Fort Worth	21-23
Puerto Vallarta	25-28
Austin	27-March 1
McAllen	28-March 1

MARCH

SAN MIGUEL REGIONAL	3-8
Beaumont	5-7
Lubbock	6-8
Arlington NLM	7-8
Kerrville	12-15
Richardson	12-15
Spring 499er	19-22
COLUMBUS NABC	19-29
Dallas 299er	27-29

APRIL

Houston	3-5
Houston GNT	3-5
Austin 199er	11-12
FORT WORTH REGIONAL	13-19
San Antonio	22-25
Houston 499er	23-26
Pittsburg NLM/750	23-25
Spring 299er	30-May 3
Austin	30-May 3

MAY

Denton NLM	15-17
Richardson	21-25
Dallas 299er	29-31

In Memoriam

- *Juanita Butler, Temple
- *Mrs. Katherine B. McLaurin, Houston
- *R. Segerlind, Dallas
- *Betsy Birkett, Kingwood
- *Craig Briney, N Richland Hls
- Nelda Gay, Sugar Land
- *Jan R. McLaurin, Leander
- *David A. Phelps, Friendswood
- *Mrs. Jean Pistole, Odessa
- *Craig T. Spencer, Bedford
- *Life Master

District 16 Teacher of the Year

Nominations Welcomed by Buck Buchanan

Are you an improving I/N player? Have you taken lessons from a teacher who has inspired you and trained you well for competition.

A club owner or director? You've noticed a steady influx of committed new players coming from the classroom of a highly regarded teacher in your area. A unit board member? You have a go-to teacher who not only grooms new players but also takes responsibility for unit educational programs.

We'd like to hear about this special teacher! Here's why: District 16 proudly honors and supports its bridge teachers. New players, many of whom become our students, are the lifeblood of the game, and the teachers who nurture and prepare them deserve our appreciation. In this spirit, the Teacher of the Year award is given annually to an outstanding District teacher.

Please consider nominating your favorite teacher for D16 Teacher of the year. It's simple. All it takes is a brief statement of why you think this individual deserves the honor.

Please email your nomination to the selection committee. (Don't forget to include contact info for your nominee.)
rcb722322@gmail.com

Nominees will be asked to provide a more complete description of their teaching activities and to have it in our hands by December 31, 2019. The 2020 Teacher of the Year award will be presented at the Houston Lone Star regional in early 2020.

Unit	Col-	Announcement	Results	Pictures
172 San Antonio	5	5	5,6	5-6 6-7
174 Houston	7			
176 Dallas	7	8	7-8	9-10
183 Fort Western	10		10	10-11
187 Corpus Christi	11		11	11
197 Lubbock	15			
201 Beaumont	11		11-12	12
204 Fort Concho	12			
207 Texas Capital	12	13	13,13	13-14
209 Permian Basin	14			
224 Abilene				
225 East Texas	15			
233 Central Texas	14			
237 Magic Valley		15, 15		
353 Wichita Falls	14			
205 Western Mexico	12			

SCORECARD

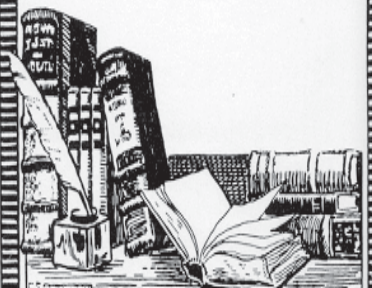
Scorecard (ISSN 10560920) Published bimonthly on the first day of January, March, May, July, September and November by District 16 of the American Contract Bridge League, 10710 Tybalt Trail San Antonio TX 78213 Yearly subscription to members, \$ 3.60, paid with annual dues. Periodical Postage paid at Memphis, TN and at additional mailing offices.

Send copy photos & announcements to: Email: scorecardd16@gmail.com
All advertising and copy should be submitted to the editor by the first and sixth days of the month, respectively, preceding publication. Advertising rates available from the editor upon request. Pictures should be in digital format. For replies, include a self-addressed, stamped envelope.

Moving? Missed Issues
Send address changes to:
ACBL Data Processing Dept.
6575 Windchase Blvd.
Horn Lake, MS 38637
662-253-3130 or
e-mail addresschange@acbl.org.
Include ACBL number.

Editors
Executive: Ira & Ellen Hessel
Managing: Ellen Hessel
Photo Editor: Ellen Hessel
GNT/NAP Reporter: Ira Hessel
National Reporter: David Sokolow

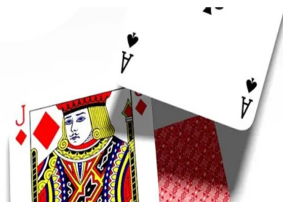
DEADLINES for
January/February 2019 Issue
Announcements: Dec. 6th
Articles, Columns: Dec. 6th
Pictures & Copy must be digital.
E-mail to: scorecardd16@gmail.com





ACES & KNAVES

a film about bridge



Unit 174 STaC

811 players. 670 tables.

- 1 34.16 Eddie Wold, Houston TX
- 2 25.79 Georgiana Gates, Houston TX
- 3 23.45 Linda Sutton, Conroe TX
- 4 20.99 Jack La Vigne, Houston TX
- 5 20.72 Stephen Reichkek, Houston TX
- 6 20.03 Linda Rensi, Katy TX
- 7 18.58 Vinh Tran, Houston TX
- 8 17.64 Buddy Hanby, The Woodlands TX
- 9 17.16 Carol Winograd, Bellaire TX
- 10 16.32 Sally Wheeler, The Woodlands TX
- 11 15.78 Mary Pat Gentry, Houston TX
- 12 15.42 Patti Mullendore, Houston TX
- 13 14.67 James Breihan, Houston TX
- 14 14.53 Randall Lake, Houston TX
- 15 14.19 James Evans, Brenham TX
- 16 13.69 Richard Wilson, Houston TX
- 17 13.38 Shari Winston, Houston TX
- 18 13.38 Gary Winston, Houston TX
- 19 12.97 Thomas Urbanosky, Caldwell TX
- 20 12.61 Kay Johnson, Houston TX
- 21 12.25 Sally Sekac, Houston TX
- 22 11.77 Sam Dodson, Houston TX
- 23 11.39 James Ochsner, Houston TX
- 24 11.07 W Lease, Richmond TX
- 25 10.51 Daniel Jackson, Spring TX

THE MOVIE ACES & KNAVES COMING TO THE LONE STAR REGIONAL

The highly-acclaimed movie about bridge, ACES & KNAVES, will be shown Saturday, February 8, at 7 p.m. at the Lone Star Regional sponsored by the ACBL Educational Foundation, District 16 and Unit 174. Bring your friends, family and neighbors and enjoy a film that shows why we all love the game of bridge! And, it's FREE FOR EVERYONE! Our mission is not only to engage those already obsessed with bridge but also to draw in the uninitiated.

The film features a quick-paced explanation of the game, lively interviews with the world's superstars, a segment on bridge and brain science, and the gripping story of how a few elite players exposed cheating at the highest levels of the game.

- No reservations are required.
- Refreshments will be provided!
- Teachers and clubs will be offering discounted lessons to your friends interested in learning the game!

Help us expose the game we love to potential new players!

"A gem! Humorous, frank, and personal...a story that even non-bridge players will find entertaining and completely accessible." —ACBL Bulletin

"No doubt the best documentary on bridge ever made." —Michael Becker, Hall of Fame



On October 18th Mickey Tryon hosted his fourth annual Last Birthday Party at the Arlington Duplicate Bridge Club. "Never believe everything your oncologist tells you!" says Mickey Tryon.

We are all looking forward to next year for Mickey's fifth "Last birthday party" A celebration of bridge, life and good friends.

Improving Your Game. Part 3

Books: System, Defense and Declarer play

By Ira Hessel

There are three main parts of bridge, bidding defense and declarer play. Bridge players are a very educated group. Information is obtained by playing, observing, reading, and lessons. But everything starts with the fundamentals. So whether you get them from a series of lessons, reading or playing it is best to grasp them in an organized form.

There are many excellent books on bidding. I started with Goren. More than learning a system the book explained the concepts and the frame work. Opening, responses and continuations. Strong weak and constructive. Forcing invitational and signoffs.

Goren's approach was standard American but the game has evolved with 2 over 1 and there are many excellent books that will do. The best system to play is the same one your partner plays! Now I can't stress enough how valuable a complete system is. Whatever conventions you add should fit with rest of the system.

My generation read Watkins on card play and it is a true classic. It is the book that "Jeopardy James" Holzhauser is reading and his Jeopardy success has been somewhat predicated on reading good fundamental books. There are many good books but you can't go wrong with Watson.

For the advancing player Eddie Kantar wrote the most essential book on defense the big red one. He has many.

For the advancing player there was nothing more illuminating than Killing defense at Bridge by Hugh Kelsey. Whenever my game slips I return to it.

Next issue I will explore watching bridge both online and kibitzing the great players.

Jeopardy James Holzhauser



Good luck to James Holzhauser, aka "Jeopardy James", as he begins the Tournament of Champions on Jeopardy the week of Nov 4. Holzhauser set many records during 33 appearances including the 12 highest one day scores.

James has played bridge for a few years and aspires to master the game. He is proving to be a great spokesman for the games and discussed it during one player interview in a Jeopardy episode.

Another young Man who has taken a fancy to bridge, John McAllister, has published a series of podcasts on bridge, "The Setting Trick: Conversations with World Class Bridge Players". Although Holzhauser is not yet a world class player he has achieved great success on quiz shows and sports betting and his approach to developing his bridge game is well worth listening to. So John made an exception. You can access it at <https://soundcloud.com/john-mcallister-221670174/a-conversation-with-jeopardy>. Or just google "the setting trick" and Holzhauser.

One thing that impressed me about Holzhauser's approach is he prepared by going to the library and reading children's books. I observed that books for young people really stress the fundamentals and advanced concepts are based on fundamentals. Holzhauser agreed with this when I met him at the Las Vegas NABC. Most mistakes I see in bridge, backgammon and chemistry are steeped in poor fundamentals. Thanks James and good luck.

Ed note. As we went to press Holzhauser won his first round game but one of his opponents beat him to the buzzer when the answer, er I mean question Alex, was "what is bridge"

Thomas Rush

Bridge Teacher

Available for lessons:
Club, Tournament, or Online



Bid better
Play better
Have more fun!

832-228-7835

Thomas_Rush@ATT.Net

UNITED STATES POSTAL SERVICE® (All Periodicals Publications Except Requester Publications)
Statement of Ownership, Management, and Circulation

1. Publication Title Scorecard		2. Publication Number 1 0 5 6 - 0 9 2 0		3. Filing Date Sept 30 2019	
4. Issue Frequency Bimonthly		5. Number of Issues Published Annually 6		6. Annual Subscription Price \$3.60/\$1.51	
7. Complete Mailing Address of Known Office of Publication (Not printer) (Street, city, county, state, and ZIP+4®) 6527 Windchase Blvd. Horn Lake MS 38637				Contact Person Ira Hessel Telephone (Include area code) 210 316 0127	
8. Complete Mailing Address of Headquarters or General Business Office of Publisher (Not printer) Same as above					
9. Full Names and Complete Mailing Addresses of Publisher, Editor, and Managing Editor (Do not leave blank)					
Publisher (Name and complete mailing address) American Contract Bridge League 6527 Windchase Blvd Horn Lake MS 38637					
Editor (Name and complete mailing address) Ira Hessel 10710 Tybalt trail San Antonio Tx 78213					
Managing Editor (Name and complete mailing address) Ellen Hessel 10710 Tybalt trail San Antonio Tx 78213					
10. Owner (Do not leave blank. If the publication is owned by a corporation, give the name and address of the corporation immediately followed by the names and addresses of all stockholders owning or holding 1 percent or more of the total amount of stock. If not owned by a corporation, give the names and addresses of the individual owners. If owned by a partnership or other unincorporated firm, give its name and address as well as those of each individual owner. If the publication is published by a nonprofit organization, give its name and address.)					
Full Name American Contract Bridge League		Complete Mailing Address 6527 Windchase Blvd. Horn Lake MS 38637			
11. Known Bondholders, Mortgagees, and Other Security Holders Owning or Holding 1 Percent or More of Total Amount of Bonds, Mortgages, or Other Securities. If none, check box <input checked="" type="checkbox"/> None					
Full Name		Complete Mailing Address			
12. Tax Status (For completion by nonprofit organizations authorized to mail at nonprofit rates) (Check one) The purpose, function, and nonprofit status of this organization and the exempt status for federal income tax purposes: <input checked="" type="checkbox"/> Has Not Changed During Preceding 12 Months <input type="checkbox"/> Has Changed During Preceding 12 Months (Publisher must submit explanation of change with this statement)					

PS Form 3526, July 2014 [Page 1 of 4 (see instructions page 4)] PSN: 7530-01-000-9931 PRIVACY NOTICE: See our privacy policy on www.usps.com.

13. Publication Title Scorecard		14. Issue Date for Circulation Data Below Nov/Dec 2018	
15. Extent and Nature of Circulation			
		Average No. Copies Each Issue During Preceding 12 Months	No. Copies of Single Issue Published Nearest to Filing Date
a. Total Number of Copies (Net press run)			
		6574	3441
b. Paid Circulation (By Mail and Outside the Mail)			
(1)	Mailed Outside-County Paid Subscriptions Stated on PS Form 3541 (Include paid distribution above nominal rate, advertiser's proof copies, and exchange copies)	6574	3441
(2)	Mailed In-County Paid Subscriptions Stated on PS Form 3541 (Include paid distribution above nominal rate, advertiser's proof copies, and exchange copies)	0	0
(3)	Paid Distribution Outside the Mails Including Sales Through Dealers and Carriers, Street Vendors, Counter Sales, and Other Paid Distribution Outside USPS®	0	0
(4)	Paid Distribution by Other Classes of Mail Through the USPS (e.g., First-Class Mail®)	0	0
c. Total Paid Distribution [Sum of 15b (1), (2), (3), and (4)]		6574	3441
d. Free or Nominal Rate Distribution (By Mail and Outside the Mail)			
(1)	Free or Nominal Rate Outside-County Copies included on PS Form 3541	0	0
(2)	Free or Nominal Rate In-County Copies Included on PS Form 3541	0	0
(3)	Free or Nominal Rate Copies Mailed at Other Classes Through the USPS (e.g., First-Class Mail)	0	0
(4)	Free or Nominal Rate Distribution Outside the Mail (Carriers or other means)	10	10
e. Total Free or Nominal Rate Distribution (Sum of 15d (1), (2), (3) and (4))		10	10
f. Total Distribution (Sum of 15c and 15e)		6584	3451
g. Copies not Distributed (See Instructions to Publishers #4 (page #3))		15	15
h. Total (Sum of 15f and g)		6599	3466
i. Percent Paid (15c divided by 15f times 100)		99	99

* If you are claiming electronic copies, go to line 16 on page 3. If you are not claiming electronic copies, skip to line 17 on page 3.

PS Form 3526, July 2014 (Page 2 of 4)

UNITED STATES POSTAL SERVICE® (All Periodicals Publications Except Requester Publications)
Statement of Ownership, Management, and Circulation

16. Electronic Copy Circulation		Average No. Copies Each Issue During Preceding 12 Months	No. Copies of Single Issue Published Nearest to Filing Date
a. Paid Electronic Copies		0	4420
b. Total Paid Print Copies (Line 15c) + Paid Electronic Copies (Line 16a)		6574	3441
c. Total Print Distribution (Line 15f) + Paid Electronic Copies (Line 16a)		7385	3451
d. Percent Paid (Both Print & Electronic Copies) (16b divided by 16c x 100)		99	99
<input type="checkbox"/> I certify that 50% of all my distributed copies (electronic and print) are paid above a nominal price.			
17. Publication of Statement of Ownership			
<input checked="" type="checkbox"/> If the publication is a general publication, publication of this statement is required. Will be printed in the Nov/Dec 2019 issue of this publication. <input type="checkbox"/> Publication not required.			
18. Signature and Title of Editor, Publisher, Business Manager, or Owner		Date	
<i>Ellen Hessel</i> Managing Editor		9/30/2019	
I certify that all information furnished on this form is true and complete. I understand that anyone who furnishes false or misleading information on this form or who omits material or information requested on the form may be subject to criminal sanctions (including fines and imprisonment) and/or civil sanctions (including civil penalties).			



Cliff Smith and Clint Pruett both made Life Master Friday at the Richardson Regional playing in the Swiss. They met in college in 1968 and learned bridge together. They last played in 1969 until last fall when they connected after 50 years. They began to play again after they retired and now they have reached this milestone together. Took a while!

Clean Sweep by Ken Schutze

Congratulations to Ken Schutze of Austin who swept the 4 day September sectional in Austin.

Ken won both one session pair games on Thursday and Friday. Then he won the 2 session team games on both Saturday and Sunday. Ken won 64.37 points, quite a total for a sectional. He performed the feat with three different partners!

Be a Unit Photographer!

by Julie Mckenna

Taking pictures for Unit 207 is fun! Seeing all the happy faces at Regionals and Sectionals is great.

Here are some tips and tricks that I have learned since I started:

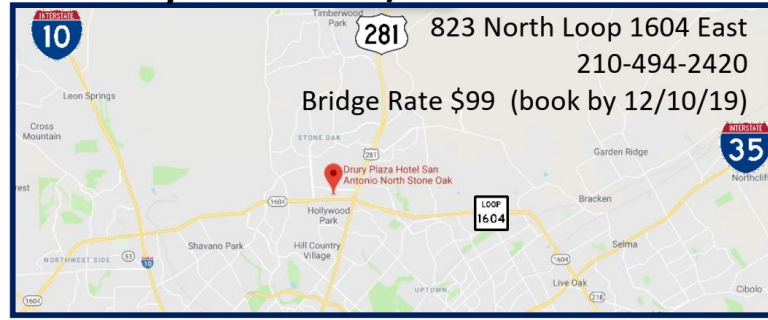
- The best camera is the one you have! I use an iphone to photograph the photos. Whatever camera you have will work.
- Find a suitable spot to take the pictures. You don't want a background that is too busy or an area that will distract from the participants.
- Try to find an area with good lighting to show everyone's face. Everyone looks better in good light.
- When taking pictures of teams, have the two tallest people sit down and have the other two stand behind them.
- Try to get the participants to smile or even laugh!
- After taking the photo ask participants to look at the picture to be sure that they are pleased. Make sure that their eyes are open, collars down, happy faces.
- Be sure to write down everyone's name so that they can be identified properly when the photo is printed in the Scorecard!
- The photo form below can help. Label players left to right, top to bottom:
 - o Date
 - o Flight
 - o Event
 - o Player 1, Player 2,
 - o Player 3, Player 4
- With the information above, each photo is renamed so the scorecard editors can correctly identify the players and the event they won. For example:
 - o Fri Aft Open Pairs Flt A Ira and Ellen Hessel, San Antonio.pdf
 - o Sun AX Swiss Teams Flt X John Smith, Redtown; Hazel Upton, Erie PA;

Jane Doe, Tampa FL; Ralph Mouth, Seattle WA.pdf
 The original photos are then e-mailed to the Scorecard editors. The photos are also copied, edited and cropped for posting on the local Unit website.

ED RAWLINSON WINTER SECTIONAL NAP DISTRICT 16 FINALS



Drury Plaza Hotel / North Stone Oak



January 16-19, 2020

Sectional Information

Stratifications:

- Flight A 2500+
- Flight B 750 - 2500
- Flight C 0 - 750

All events will be stratified based on Average Master Points

Card Fees:

- \$13 per person per session
- Sunday Swiss \$128 per team (includes lunch)
- Additional \$4 per session for unpaid members

NAP Information

Must have qualified at Club Level

- Card Fees: Sat \$13 per person per session
- Sun \$16 per person per session (includes lunch)

- Flight A: Open to any player
- Flight B: Players with less than 2500 MPs as of June 2019 MP cycle
- Flight C: Non-life master less than 500 MPs as of June 2019 MP cycle

Thursday, January 16, 2020

- 10:00 am Stratified Pairs
- 3:00 pm Stratified Swiss Teams

Friday, January 17, 2020

- 10:00 am Stratified Pairs
- 3:00 pm Stratified Pairs
- 7:30 pm Stratified Fast Pairs

Saturday, January 18, 2020

- 10:00 am Stratified Pairs
- 10:00 am NAP Qualifying (1st Session)
- 3:00 pm NAP Qualifying (2nd Session)
- 3:00 pm Stratified Pairs

Sunday, January 19, 2020

- 10:00 am NAP Finals (1st session)
- 10:00 & TBA Stratified Swiss Teams
- TBA NAP Finals (2nd Session)

Meal served between sessions

499er Games:

- Thursday - Saturday 10 am & 3 pm
- (3 table minimum)



Tournament Chairs: Roxana Tom, 210-508-4697, rtom85@yahoo.com
Nancy Tom, 210-912-6383, ntom@att.net

Partnership Chair: Jeanne Dawley, 915-525-6126, genie87031@yahoo.com
Director in Charge: Tom Marsh

**Unit 172
San Antonio**

Lew Spurlock

This will be my last article for The Scorecard as this is my last year on the board for Unit 172. I hope you have enjoyed reading my articles as much as I have enjoyed writing them.

The New Braunfels Sectional was a success with table count up about 20 tables over the previous year. The Election Sectional will be in the middle of October and the Non-Life Masters tournament will be held at the Fiesta BC in November.

Most of the players in Unit 172 are intermediate level players who struggle daily to understand and enjoy this challenging game we play. I recently asked some of the top players in the Unit why they always seem to do well regardless of who they play with. They all agreed that the principle reason is the time they have spent playing bridge. They have seen similar bidding situations and card play combinations in the past often enough that they have learned how to bid and play better than the average player.

This reminded me of a quote from Paul Mendelson in his book *121 Tips for Better Bridge*. In the introduction he says: "The best way to learn bridge is to play with better players. Slowly, through trial and error (as well as a lecture or two, some embarrassment, and inevitably, the occasional humiliation), you will begin to store the gems of knowledge vital for

success in every game you play." Now if we can only remember that as we suffer.

For my final column, I thought I would interview one of the stars of Unit 172, Ira Hessel. Ira was born in Brooklyn (as if you couldn't tell) and graduated from CCNY. He then attended graduate school at the University of Texas in Austin (1) because he did not want to go to graduate school in New York and (2) they offered him the most money. Ira obtained his PhD in Chemistry. His field was synthesis of natural products. After graduating he taught at UTSA retired and went on the work in creating filters and protective lenses at a local chemistry company. He has four patents in photo-protective chemicals.

He learned the game of bridge from his parents in NYC and has been playing the game for about 45 years having achieved Platinum Life Master with around 17,000 points currently. He has also been president of the district 16 and has played with top level players like Bart Bramley and Bob Hamman, a founding member of the Dallas Aces. He has come in second four times at the Nationals. Even with those accomplishments, he has at times become discouraged like the rest of us. When he had about 7500 points, he told a friend at a NABC that he would never be a platinum LM (10,000) because he wanted to be a Grand LM(10,000 with a NABC win) and decided to quit the game before 10K. That day was one of the days he came in second in a Nationals and even though he hit 10,000 he keeps trying.

After all this time he is still excited

about the game of bridge. He most likes the intellectual challenge of the game and the support system among the players. Every where he goes in the country (and Canada) he has close friends. He admires the fact that all players are willing to help each other whatever their need. Many top level players are almost always willing to help the newer players learn the game. Although he likes winning better than losing, what he hates way worse than losing is not playing.

His advice to everyone is to process the game: Study the results from each game and each hand to determine where to improve. Always continue learning: read books on the game and talk to better players. Finally, think about what you need to do to improve by even one percentage point a year whether it is in bidding, card play or simply reducing your anxiety over the game. There is a Buddhist principle along this line: "The path is the goal".

New Braunfels

Sep 05-08 2019
196 players 249 tables.

- 1 41.09 Ed Rawlinson
- 2 35.81 Venkatrao Koneru
- 3 32.15 Gary Anziani
- 4 28.24 Rosemary Kelley
- 5 27.15 Bill McCarty
- 6 25.91 Virginia Noelke
- 7 25.62 Mercedes Barker
- 8 25.62 Kathryn Bailey
- 9 24.86 Sheryleen Grothus
- 10 21.86 Everette Lewis

Thu Morn Open Pairs-24.0 Tables /
Based on 29 Tables A1.Ed Rawlinson

-Bill McCarty A2. Ellen Hessel-Ira Hessel BC1. Ann Kuehler- Cindy Cummins 2 Richard Curtin-Kay Laird 3 2 Liz Hinkle-Richard Day Horseshoe Bay TX 55.99%

Thu Morn 499er Pairs-5.0 Tables
AB1. Robert Craig-Robert Watson AB2. Sharon Evans- Nancy Tom

Thu Aft Stratified Swiss-25 Tables /
Based on 31 Tables A1V.enkatrao Koneru-Doug Cross-Gary Anziani-Ed Rawlinson A2/3B1. Susan Ohm-Yesh Singh-Eleanor Siegal-K Voges A2/3 Jerrold Harrington-C David Mitchell-Robbie Borchers-Josephine Grabow B2. Kathryn Bailey-Terri O'Brien-Mercedes Barker-Laura Delfeld C1. Elisabeth Kay-Amanda Stewart-Cindy Cummins-Ann Kuehler

Thu Aft 499er Pairs-6.0 Tables
AB1. Robert Craig-Robert Watson AB2. H Quiles-Albert Fulton C1. John Peart-Sherry Peart C2. Sharon Evans-Nancy Tom

Fri Morn Open Pairs-27.5 Tables /
Based on 35 Tables AB1. Mercedes Barker-Kathryn Bailey A2. Everette Lewis-Sheryleen Grothus B2. Terri O'Brien-Laura Delfeld C1. Peter Naimoli-Lysa Nguyen C2. Lynn (Ann) Pierson-Roxi Raaf

Fri Morn 499er Pairs-7.0 Tables
ABC1. H Quiles-Albert Fulton ABC2. Marietta Allmond-Michael Stoffel

Fri Aft 499er Pairs-6.0 Tables /
Based on 12 Tables ABC1. Sandra Thompson-Mary Ruth Bordman AB2. Annetta Hughson-Lois Kertesz C2. Yao-Hui Hsiau-David Groepler

Fri Aft Open Pairs-25.0 Tables /
Based on 33 Tables A1. Carolyn Riely-Terry Riely A2. Sheryleen Grothus-Everette Lewis BC1. Ltc.David Minto- Florence Ebel B2. Becky Ellisor-Buddy Ellisor C2. Lysa

Nguyen-Peter Naimoli
Sat Morn 499er Pairs-6.5 Tables
ABC1. Sandra Thompson-Mary Ruth Bordman ABC2. Lelia Jackson-Nancy Tom

Sat Morn Open Pairs-28.0 Tables /
Based on 34 Tables A1. Ellen Hessel-Ira Hessel A2. Venkatrao Koneru-Virginia Noelke B1/2 Mercedes Barker-Kathryn Bailey B1/2 John Moore-Roxann Swenson C1. Diana Drenner-Don Mahoney C2. Eleanor Siegal-Yesh Singh

Sun Bracketed Swiss-1-7 Tables 1.
Thomas Rush-Phillip Grothus-Daniel Jackson-Bill McCarty 2. Virginia Noelke-Venkatrao Koneru-Gary Anziani-Ed Rawlinson

Sun Bracketed Swiss-2-7 Tables 1.
Anita Albert-Jarek Langer-Wiley McMinn III-Sharon Dameron 2. Samuel Williams Jr-K Carpenter-Jo Neesvig-John Hilbig

Sun Bracketed Swiss -3 1. Jeanne Dawley-Tessa Bodnar-Kathy Sinkin-Amor-Forrest Gray 2. Barbara Morgan-Mary Rita de Hoyos-Peter Peca Jr-Liz Ashby

Sun Bracketed Swiss-4 1 Michael Harris-Sandra Harris-John Moore-Roxann Swenson 2. Carol Ramberg-Stewart Windeler-Andy Villastrigo-Leigh Primerano

Sat Aft Open Pairs-27.5 Tables /
Based on 33 Tables A1. Carolyn Riely-Terry Riely A2. Gary Anziani-Ed Rawlinson B1. Mercedes Barker-Kathryn Bailey B2. Jerry Barrett-Gary Anderson C1. James Cuccia-Helen King C2. Ann Kuehler-Cindy Cummins

Sat Aft 499er Pairs-5.0 Tables
ABC1. Doris Salley-Jeanne Binovi ABC2. Nancy Tom-Lelia Jackson

NEW BRAUNFELS SECTIONAL WINNERS



Carol Ramberg, Leigh Primerano, Andy Villastrigo, Stewart Windeler
Sunday Swiss (Bracket 4, tie)



Bob Craig, Bob Watson
Thursday Morning 499er
Thursday Afternoon 499er



Al Fulton, Tony Quiles
Friday Morning 499er



Mary Ruth Bordman, Sandra Thompson
Friday Afternoon 499er
Saturday Morning 499er



Doris Salley, Gina Binovi
Saturday Afternoon 499er



Ed Rawlinson, Bill McCarty
Thursday Morning Pairs (A)



Ed Rawlinson, Doug Cross,
Gary Anziani, Babu Koneru
Thursday Swiss (A)



Kathryn Bailey, Mercedes Barker
Friday Morning Pairs (A/B)
Saturday Morning Pairs (B, tied)
Saturday Afternoon Pairs (B)



Carolyn & Terry Riely
Friday Afternoon Pairs (A)
Saturday Afternoon Pairs (A)



Ellen & Ira Hessel
Saturday Morning Pairs (A)



Bill McCarty, Daniel Jackson,
Phillip Grothus, Thomas Rush
Sunday Swiss (Bracket 1)



Ann Kuehler, Cindy Cummins
Thursday Morning Pairs (B/C)



Eleanor Siegal, Yesh Singh
Thursday Swiss (B)



Ann Kuehler, Cindy Cummins
Amanda Stewart, Elisabeth Kay
Thursday Swiss (C)



Roxann Swenson, John Moore
Saturday Morning Pairs (B, tied)
Sunday Swiss (Bracket 4, tied)



Don Mahoney, Diana Drenner
Saturday Morning Pairs (C)



Jim Cuccia, Helen King
Saturday Afternoon Pairs (C)



Jarek Langer, Anita Albert
Wiley McMinn, Sharon Dameron
Sunday Swiss (Bracket 2)



Tessa Bodnar, Jeanne Dawley,
Forrest Gray, Kathy Sinkin-Amor
Sunday Swiss (Bracket 3)

**Willson Davis
Election Sectional**

Oct 17-20 2019

202 players 246 tables.

- 1 42.05 Stephen Toplansky
- 2 39.75 Kenneth Schutze
- 3 28.54 Donna Swarthroat
- 4 25.13 Ira Hessel
- 5 25.13 Ellen Hessel
- 6 23.45 Ed Rawlinson
- 7 22.32 Dave Swarthroat
- 8 21.93 Thomas Smith
- 9 18.76 Gary Anziani
- 10 18.72 Terry Riely
- 11 18.72 Carolyn Riely

Open Pairs-23.0 Tables / Based on 33 Tables A1. Sheryleen Grothus-

Donna Swarthroat A2B1. Larry Levin-David Johnson Jr B2. Lew Spurlock-Jeri Tribo C1. Arleen Schafer-Jo Ann Manfredi C2. Jeanne Dawley-Helen King

Thu Morn 499er Pairs-10.0 Tables AB1. Salli Grissom-Blanche Roddick AB2C1. Sharon Evans-Nancy Tom C2. Deborah Kline-Cathy O Connor
Thu Aft Swiss-24 Tables A1. Tom Olsson-Ann Olsson-Bob Otis-Beth Gale A2/3B1/B2. Stan Pushkarsky-Thomas Smith-Kendall Early- Jeri Tribo A2/3B1/2C1. Elisabeth Kay-James Cuccia-Leigh Primerano-Mary Lou Anziani C2. Donald Hixson-Virginia Hixson-Bill Markert-Linda Markert
Thu Aft 499er Pairs-10.5 Tables

AB1. Ann Denton-Kevin Orr A2. Paul Fafoutakis-Sunny Won B2C1. Sharon Evans-Nancy Tom C2. Yao-Hui Hsiau-Beverly Poth

Fri Morn 499er Pairs-10.0 Tables ABC1. Sharon Evans-Nancy Tom AB2. Richard Day-Robert Thornton C2. Beverly Silas-Julia Bondurant
Fri Morn Open Pairs-27.0 Tables / Based on 37 Tables A1. Michael Kamil-Gabrielle Sherman A2B1. Jean Blilie-Eugene Lux B2. Donald Hixson-Virginia Hixson C1. H Quiles-Yesh Singh C2. Felicia Davis-Barbara Layton

Fri Aft 499er Pairs-9.5 Tables ABC1. Betty Westbrook-Thomas Russell ABC2. Stuart Litwin-Kevin Orr

Fri Aft Open Pairs-20.5 Tables / 31 Tables A1. Stephen Toplansky-Kenneth Schutze A2. Dave Swarthroat-Donna Swarthroat B1. Ron Brown-Judy Brown B2. Jean Blilie-Eugene Lux C1. Elisabeth Kay-James Cuccia C2. Diana Drenner-Don Mahoney
Sat Morn 499er Pairs-9 Tables AB1. Herbert Keyser-Barbara Keyser AB2. Rupa Shah-Kathleen McDougall C1. Mary Ruth Bordman-Evelyn Funk C2. Betty Westbrook-Thomas Russell
Sat Morn Open Pairs-26 Tables / 35 Tables A1. Kenneth Schutze-Stephen Toplansky A2. Terry Riely-Carolyn Riely BC1. Ann Kuehler-Cindy Cummins B2. Anyemarie Weaver-Dorothy C2. H Quiles-Yesh Singh
Sat Aft 499er Pairs-5.5 Tables

ABC1. Evelyn Funk-Mary Ruth Bordman ABC2. Lelia Jackson-Nancy Tom
Sat Aft Open Pairs-23.0 Tables / Based on 29 Tables A1. Ed Rawlinson-Gary Anziani A2. Kenneth Schutze-Stephen Toplansky C1. Sharon Dameron-Thomas Smith B2C1. H Quiles-Yesh Singh C2. Diana Drenner-Don Mahoney
Sun Swiss-24 Tables A1. Ellen Hessel-Ira Hessel-Kenneth Schutze-Stephen Toplansky A2B1. Stan Pushkarsky-Jarek Langer-Thomas Smith-Sharon Dameron B2. K Carpenter-Samuel Williams Jr-Jo Neesvig-John Hilbig C1. Cindy Cummins-Ann Kuehler-James Cuccia-Georgia Baron

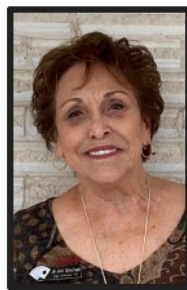
UNIT 172 WILLSON DAVIS ELECTION SECTIONAL WINNERS



Sheryleen Grothus, Donna Swarthroat
Thursday Morning Pairs (A)



Larry Levin, David Johnson Jr.
Thursday Morning Pairs (B)



Jo Ann Manfredi
Thursday Morning Pairs C



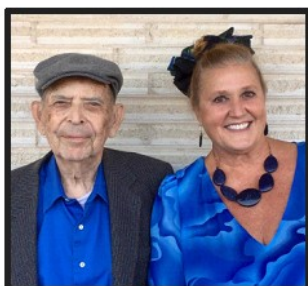
Gene Lux, Jean Blilie
Friday Morning Pairs (B)



Ron & Judy Brown
Friday Afternoon Pairs (B)



Jim Cuccia, Leigh Primerano,
Mary Lou Anziani, Elisabeth Kay
Thursday Swiss (B/C)



Jim Cuccia, Elisabeth Kay
Friday Afternoon Pairs C



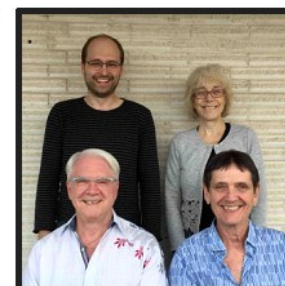
Yesh Singh, Tony Quiles
Friday Morning Pairs ©
Saturday Afternoon Pairs (C)



Sharon Dameron, Thomas Smith
Saturday Afternoon Pairs (B)



Cindy Cummins, Ann Kuehler
Saturday Morning Pairs (B/C)



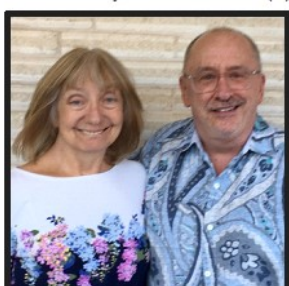
Jarek Langer, Sharon Dameron
Thomas Smith, Stan Pushkarsky
Sunday Swiss (B)



Ann Kuehler, Cindy Cummins,
Jim Cuccia, Georgia Baron
Sunday Swiss (C)



Blanche Roddick, Salli Grissom
Thursday Morning 499ers



Ann Denton, Kevin Orr
Thursday Afternoon 499er



Sharon Evans, Nancy Tom
Friday Morning 499ers



Thomas Russell, Betty Westbrook
Friday Afternoon 499er



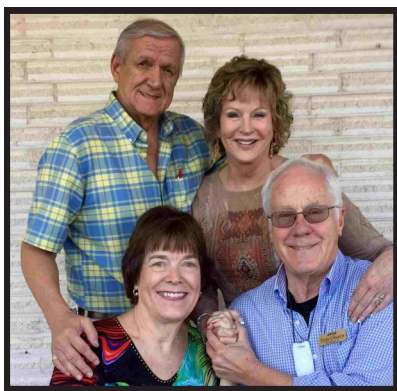
Barbara & Herb Keyser
Saturday Morning 499er



Sue Funk, Mary Ruth Bordman
Saturday Afternoon 499er



Ellen & Ira Hessel,
Stephen Toplansky, Kenneth Schutze
Sunday Swiss (A)



Bob Otis, Beth Gale,
Ann Olsson, Tom Olsson
Thursday Swiss (A)



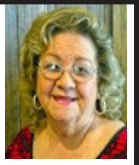
Kenneth Schutze, Stephen Toplansky
Friday Afternoon Pairs (A)
Saturday Morning Pairs (A)



Ed Rawlinson, Gary Anziani
Saturday Afternoon Pairs (A)

Unit 174 Houston

Carol Ann
Wilson



Unit News (www.acblunit174.org for all tournament flyers and club pages): We are extremely proud to report that **Nancy Strohm** is this year's recipient of the **Oswald and James Jacoby Service Award**, which is District 16's premier service award for volunteer service. Nancy is more than deserving for her past-and continuing-service to Unit 174, District 16, and the ACBL, where she serves as VP of the Charity Committee and 1st VP of the District Executive Committee. Important milestones mark her past service, including obtaining \$30,000 in grant money for the District in 2014 and more to come in 2021! Her marketing skills and efforts helped to bring the Lone Star Regional back over 3,000 tables during her unit presidency and six years on the Board. She was also instrumental in establishing the D16 Teacher Appreciation Day. We don't know what we would do without this spirited, creative, and selfless woman!

New Growth Efforts: Our Unit's Board spent considerable time and effort on a concept we hope will increase our new membership and retention. A "Social Duplicate Bridge Event" was scheduled for our three largest clubs on the same date. A recent tropical storm and its flooding changed plans for two of the clubs, but the **Clear Lake Duplicate Club** was able to follow through with success! (See their report below.) We are looking forward to more activities like this as we continue our never-ending efforts to bring in potential members, welcome newcomers, test new events, and increase membership.

Upcoming STaC: December 16-22 is the date we have a rescheduled Sectional Tournament at Clubs event, we will close out the year with that—and parties!

Our **Lone Star Regional 2020** for **February 3-9**, is again at the Marriott Houston Westchase (713-978-7400, \$119, Booking Code LSR2020, cut off 1/24/20). We think this will be our best Regional ever, so get your rooms and make plans now. The movie "Aces & Knives" will be shown on Saturday evening. We will again have those ever popular daily Bracketed Swiss games and plenty of Gold Rush opportunities, along with all the regular events. We will also repeat the Mini-Soloway KO events for teams with 1200+ MP average. We expect several highly accomplished players in this event. We will also again offer the Director's Refresher Class. **Sam Khayatt's** hospitality will be the best, and Tournament Chairs **Lauri Laufman** and **Jack LaVigne** are ready to make sure this is our best ever!

News from Unit 174 Clubs

Lone Star Bridge Club, www.lonestarbridgeclub.org, meets at St. Paul United Methodist Church in Conroe with open games on Mondays at noon and Thursdays at 10:30 a.m. Their new 299er game on the second Tuesday of each month continues to be successful. **Jeff Kroll** holds bridge Q&A sessions for the open games he plays. **Apple II Duplicate Bridge Club** Manager **Brigitte Sandifer** reports that their Friday \$3 game at Tracy Gee Community Center continues to average 36 tables, and they are planning their holiday party for Dec. 13.

Westside Bridge Academy, westsidebridgeacademy.com, publishes a monthly newsletter to advise of its activities and happenings, and **Bert Onstott** maintains a very active Web page for the club. It is one of the most active clubs in the unit and regularly hosts 499er tournaments (last was September 12-15) and keeps a full class schedule with teachers like **Gary King** and **Terry Currie**. Sundays are full with an Open and I/N game at 1 and Swiss Teams at 6. They are very successful with events such as LM Milestone Parties, where reservations are required, and the table count is often as high as 50! This is an excellent way to get those table counts up, and the players always love the food! Keep up the good work!

Bridge Club of Houston (www.bridgeclubofhouston.com) is having success with its Thursday night game run by **Sam Khayatt**, who furnishes pizza once a month! (We know you can get bridge players to come for free food!) It's very difficult to get bridge players out at night in Houston, for a variety of reasons, but Sam has persevered at their beautiful new facility, and it's paying off. Sometimes you just have to keep on keeping on! Good work, Sam!

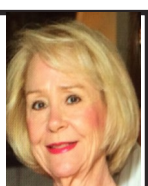
Clear Lake Duplicate Bridge Club held two Halloween Parties with food and prizes for costumes! They had a huge success with their recent "Social Duplicate Event" to introduce new and social players to duplicate bridge. They filled many tables and have already obtained new members! They plan to repeat the event, which was held in two parts: in one room a supervised game run by **Evvie Gilbert** included 21 social guests; in the other room **Dave Glandorf** introduced 12 new players to basics with the session ending with bidding, play, and scoring! Congrats!

New 70% Accomplishments: In **Westside Bridge Academy's** Open Games, **Joe Quinn** and **Tom Breed** scored 70.52% on 8/2; **David Crooks** and **Bill Kiehnhoff** a 73.56% on 8/13; **W. Lease** and **L. Laird** had a 72% on 8/14; **Ralph Herz** and **Bill Kiehnhoff** had a 70.55% on 8/15; **Timucin Erkok** and **Joe Quinn** had a 70.31% on 8/27; **Mary Ann Murray** and **Walt Thomas** had a 70.54% on 9/6; **Joe Quinn** and **Shawn Quinn** posted a 73.08% on 9/16; and **Gary King** and **Clif Rice** had a **71.29% game on 9/30**. In the I/N games, **Viki Magriso** and **Gulden Burdett** had a 79.17% on 8/13; and **Wynette Stuntz** and **Marilyn Beal** had a 77.08% on 9/10. **Clear Lake BC** reports that **Arthur Giovannangeli** and **William Houck** had a 71.76% game on 6/20; and **William Smith** and **Charles Hilding** had a 71.58% on 8/30. At **BcoH**, on 8/15, **Bill Daniel** and **Carol McCord** had a 70.83% in the morning game, and **Sally Wheeler** and **Buddy Hanby** had a 72.89% in the evening game. Finally, at the Forest Club game on 8/27, **Lynnda Paukune** and **Sheila Harrison** had a 70.65% game. **Congratulations to all!**

In Remembrance: **Nelda Gay** passed away on 8/29, and **Betsy Birkett** left us on 9/19. Our prayers and support go out to their families and friends. Till next time . . .

Unit 176 Dallas

Mary Jane
McGinnis



I'm certainly glad the oppressive heat

has faded into a burst of cool weather and, at last, the arrival of Fall. It's hard to believe that by the time that you read this Halloween will have passed and Thanksgiving, Hanukkah, and Christmas will soon follow. Since many will be traveling to visit family and friends, I wish all a very happy and safe holiday season.

Once more our Labor Day Regional was a success and we owe it all to our two co-chairmen, Ed Yetter and Tomi Storey. Please congratulate them on another job well done. For the third year at the Regional, Robbie Ogle has been in charge of the IN reception on Friday between the afternoon and evening sessions. As usual the food was delicious and everyone enjoyed it. Many thanks to Robbie.

The Board visited Waxahachie's Bridge Club on Tuesday, September 17th for an evening game. The venue, a Boy Scout log cabin, is so fun. The Board always enjoys these visits because for many of our out-lying clubs, we only see the members at the tournaments. Many thanks to Waxahachie for hosting us.

Coming up October 17th is a Unit Team game at Dorsey's Bridge Club at 6:30 pm, and on Friday, November 15th is a unit pairs game at all the clubs. Our Dallas Fall Sectional will be November 7th-10th at the Richardson Civic Center. The game times are 10:00 am and 2:30 pm for both pairs and team games. Please add these to your calendars and join the fun.

Last but not least, Susan Flick will be chairing our Holiday Unit Game Party on Sunday, December 8th at the Richardson Civic Center. Once again, it is free to all members of Unit 176. We are having our usual, traditional holiday menu and door prizes. Lunch will be served at noon and the game will start at 1:00 pm. Please sign up at your local club promptly because last year we had 88 tables attend. Once again we are asking that everyone donate to the North Texas Food Bank. Last year our unit was so very generous, and we hope for the same this year. Bless you! All of these upcoming events are chaired by dear volunteers who donate their valuable time so that Unit 176 runs smoothly. I wish them all a special holiday toast and always look forward to seeing them at the bridge table.

Dallas Labor Day Regional

Richardson
Aug 27-Sep 02, 2019
1018 players 1738 tables.

1 142.60 Walter Schafer Jr, CA
2 142.60 Richard Pavlicek, FL
3 88.59 Michael Schreiber, Plano
4 88.07 Robert Hollman, Santa Barbara
5 88.07 Joris van Lankveld, Amsterdam
6 83.33 Bruce Ferguson, Palm Springs
7 83.33 Berend Van Den Bos, Den Haag
8 78.07 Ron LaCour, Georgetown
9 76.50 Hemant Lall, Carrollton
10 75.59 Michael Rosenberg, CA
11 75.59 Mark Lair, Canyon
12 72.63 Nagy Kamel, Plano
13 72.58 Stephen Kornegay, NRichland Hls
14 72.58 Nancy Kornegay, NRichland Hls
15 69.48 Ira Hessel, San Antonio
16 65.61 Petra Hamman, Carrollton
17 64.42 Phil Clayton, Frisco
18 59.37 Steve Garner, Chicago IL
19 59.37 Jeffrey Wolfson, Chicago IL
20 58.79 Tomi Storey, Frisco
21 57.98 Kimmel Jones, Euleuss
22 57.60 Robert Buchanan, Arlington
23 57.20 Mark Bumgardner, Dallas
24 56.00 Jonathan Cohn, Gillette WY
25 55.10 Dan Morse, Houston

Tuesday Open Pairs-16.5 Tables
A1. Walter Schafer Jr, Fountain Val-

ley CA; Richard Pavlicek, Fort Lauderdale FL A2B1. John Moore-Stan Pushkarsky, Austin A3. Nancy Stanton, Lewisville; Beth Coker, Bryan A4. Becky Koenigseder, Alvarado; Robert Buchanan, Arlington A5. William Garrard-Donna Garrard, Irving B2. Jimmy Justice, Waxahachie; Charles Brown, Arlington B3C1. Jay Evert-James Sells, Houston B4. Jimmy Reynolds, Laredo; Robert Johnson, Ajijic Mexico B5. Dorothy Moore-Tom Moore, Keller C2. Richard Wittrop, Frisco; Peter Hylak, McKinney C3. James Rider-Cheryl Rider, Dallas C4. Robert Dixon-Narayana Kamath, Arlington

Tuesday Swiss Bracket 1-9 Tables
1. Gaylor Kasle, Boca Raton FL; Dan Morse, Houston; Nagy Kamel, Plano; Pat Cassidy, Arlington 2. Jeffrey Wolfson-Steve Garner, Chicago IL; Mark Lair, Canyon; Michael Rosenberg, Sunnyvale CA 3. Nancy Kornegay-Stephen Kornegay, N Richland Hls; Mark Bumgardner, Dallas; Kimmel Jones, Euleuss

Tuesday Swiss Bracket 2-9 Tables
1. Kathryn Bailey, Dripping Spring; Mercedes Barker, Katy; Jane Collins, Georgetown; Steven Andersen, Austin 2. Liane Tsai, Plano; Marie-Anne Johnson-Ann Parker, Dallas; Ted Bender, Allen

Tuesday Swiss Bracket 3-9 Tables
1. Robert Babb-Laurie Hartline-Babb, Georgetown; Marie Russiello-Emil Russiello, Austin 2. Susan Breeding-Jean Durocher, Austin; Cynthia Bell, The Woodlands; Earnestine Broyles, Lakeway

Wednesday Open Pairs-23.0 Tables / Based on 61 Tables A1. Walter Schafer Jr, Fountain Valley CA; Richard Pavlicek, Fort Lauderdale FL A2. Barbara Hamman, Dallas; Michael Schreiber, Plano 61.20% A3. Phillip Grothus-Jack LaVigne, Houston A4B1. Thomas Rush, Houston; Kurt Zhang, College Station A5. Ned Irving, Hot Springs Vlg AR; Donald Rumelhart, Ann Arbor MI B2C1. Jane Giddens-Gwen Wright, Lubbock B3. Nancy Fellman-Chris Anderson, Dallas B4C2. David Greims, Dallas; Fred Curtis Jr, Garland B5. Kalpana Sutarai-Swadesh Mahajan, Austin C3. William Driscoll-Terence Harley, Richardson C4. Colleen Bicket, Edmond OK; Betty McCauley, Oklahoma City OK

Thursday Gold Rush Pairs-31.0 Tables BC1. Larry Klein-Alice Wright, Denton BC2. Harold Schulz-T R Sartor, Granbury BC3D1. Feza Buyukkura, Fairview; Randall Wilson, Desoto BC4D2. Rodney Wood-Joan Wood, Southlake BC5. Tom Price, Hot Springs Vlg AR; Richard Weissmann, Lewes DE D3. Debor Cassen, Dallas; John Saylor, Grapeview D4. Neal Bert-Pat Harrison, Plano D5. Ian Currell, Plano; Charles Golenternek, Dallas 55.36%

Thursday Swiss Bracket 1-9 Tables
1. Michael Penick-Mark Bumgardner, Dallas; Bill Staats, Southlake; Kimmel Jones, Euleuss 2. Steven Bell, Cypress; Jerry Barrett, Austin; Charlene Sands, Pflugerville; Virgil Massey, Driftwood 3. Jeffrey Wolfson-Steve Garner, Chicago IL; Michael Rosenberg, Sunnyvale CA; Mark Lair, Canyon

Thursday Swiss Bracket 2-9 Tables
1. Jon Browne, Plano; Adrienne Feuer, McKinney; Mark Hatkoff, Rowlett; Lee Huber, Rockwall 2. Robert Scrimale-Paul Taylor-Scott Nason, Dallas; Eric Diamond, Plano 3/4 Susan Kaplan-Dolores Aquino, Houston; James McCommons-Stephen Birbaum, Dallas 3/4 Terri O'Brien, Leander; Richard Clarke-Anita Albert, Austin; Sharon Dameron, Cedar Park

Thursday Swiss Bracket 3-9 Tables
1. Rich Brandenburg, Coppell; Robert Holliday-Robert Bender, Plano; Stuart Nelan, Melissa 2. Liane Tsai, Plano; Marie-Anne Johnson-Ann Parker-Carla Joiner, Dallas 3. John Jackson, Dallas; Ira Nemazie-Jo Shah, Irving; Siddhi Vasa, Cherry Hill NJ

Thursday Swiss Bracket 4-9 Tables
1. Jim Tucker-Luraette Tucker-Janice Atterberry-Travis Atterberry, Little Rock AR 2. Clint Schuhmacher-Elise Sher-Joe Fletcher-Roslyn Miller, Dallas 3. Lauri Laufman, Houston; Kathleen Malcolmson, Richmond; Susan Young, Shreveport LA; Karen Jennings, Lafayette LA

Thursday Swiss Bracket 5-9 Tables
1/2 Patsy Walters, Edge Cliff Vill; Sharon Stewart-Harriet Motter, Mansfield; Ann Kennemer, Burleson

Wednesday Swiss Bracket 5-9 Tables
1. Alma Farley-Robert Clarke, Richardson; Judy Etchison-J Scott Etchison, Dallas 2. Charles Hill, Keller; Lawrence Fritz, N Richland Hls; Donna Gibbs, Denton; Jo Hammett, Plano

Wednesday Swiss Bracket 6-9 Tables
1. Jack Harkey, Dallas; Bill Frazee, Plano; Kathy Smith-Clifford Smith, Marietta 2. Darlyn Dusek, League City; Nancy Guthrie-Jeannie Stone, Houston; Ronnie Martin, Friendswood

Wednesday Swiss Bracket 7-16 Tables 1/2 Mary Chaffin-Sharon Seagraves-Erica Walker, Dallas; Cheryl Paul, Plano 1/2 Jack Hartel-Jill Hartel, McKinney; James Ross-Donald Livingston, Fairview

Thursday Open Pairs-23.0 Tables / Based on 61 Tables A1. Walter Schafer Jr, Fountain Valley CA; Richard Pavlicek, Fort Lauderdale FL A2. Barbara Hamman, Dallas; Michael Schreiber, Plano 61.20% A3. Phillip Grothus-Jack LaVigne, Houston A4B1. Thomas Rush, Houston; Kurt Zhang, College Station A5. Ned Irving, Hot Springs Vlg AR; Donald Rumelhart, Ann Arbor MI B2C1. Jane Giddens-Gwen Wright, Lubbock B3. Nancy Fellman-Chris Anderson, Dallas B4C2. David Greims, Dallas; Fred Curtis Jr, Garland B5. Kalpana Sutarai-Swadesh Mahajan, Austin C3. William Driscoll-Terence Harley, Richardson C4. Colleen Bicket, Edmond OK; Betty McCauley, Oklahoma City OK

Thursday Gold Rush Pairs-31.0 Tables BC1. Larry Klein-Alice Wright, Denton BC2. Harold Schulz-T R Sartor, Granbury BC3D1. Feza Buyukkura, Fairview; Randall Wilson, Desoto BC4D2. Rodney Wood-Joan Wood, Southlake BC5. Tom Price, Hot Springs Vlg AR; Richard Weissmann, Lewes DE D3. Debor Cassen, Dallas; John Saylor, Grapeview D4. Neal Bert-Pat Harrison, Plano D5. Ian Currell, Plano; Charles Golenternek, Dallas 55.36%

Thursday Swiss Bracket 1-9 Tables
1. Michael Penick-Mark Bumgardner, Dallas; Bill Staats, Southlake; Kimmel Jones, Euleuss 2. Steven Bell, Cypress; Jerry Barrett, Austin; Charlene Sands, Pflugerville; Virgil Massey, Driftwood 3. Jeffrey Wolfson-Steve Garner, Chicago IL; Michael Rosenberg, Sunnyvale CA; Mark Lair, Canyon

Thursday Swiss Bracket 2-9 Tables
1. Jon Browne, Plano; Adrienne Feuer, McKinney; Mark Hatkoff, Rowlett; Lee Huber, Rockwall 2. Robert Scrimale-Paul Taylor-Scott Nason, Dallas; Eric Diamond, Plano 3/4 Susan Kaplan-Dolores Aquino, Houston; James McCommons-Stephen Birbaum, Dallas 3/4 Terri O'Brien, Leander; Richard Clarke-Anita Albert, Austin; Sharon Dameron, Cedar Park

Thursday Swiss Bracket 3-9 Tables
1. Rich Brandenburg, Coppell; Robert Holliday-Robert Bender, Plano; Stuart Nelan, Melissa 2. Liane Tsai, Plano; Marie-Anne Johnson-Ann Parker-Carla Joiner, Dallas 3. John Jackson, Dallas; Ira Nemazie-Jo Shah, Irving; Siddhi Vasa, Cherry Hill NJ

Thursday Swiss Bracket 4-9 Tables
1. Jim Tucker-Luraette Tucker-Janice Atterberry-Travis Atterberry, Little Rock AR 2. Clint Schuhmacher-Elise Sher-Joe Fletcher-Roslyn Miller, Dallas 3. Lauri Laufman, Houston; Kathleen Malcolmson, Richmond; Susan Young, Shreveport LA; Karen Jennings, Lafayette LA

Thursday Swiss Bracket 5-9 Tables
1/2 Patsy Walters, Edge Cliff Vill; Sharon Stewart-Harriet Motter, Mansfield; Ann Kennemer, Burleson

1/2 Charles Hill, Keller ; Lawrence Fritz, N Richland Hls ; Virginia Boudreau, Flower Mound ; Donna Gibbs, Denton 3. Jack Harkey-Jean Higgins-William Higgins, Dallas ; Bill Frazee, Plano 85.00

Thursday Swiss Bracket 6-9 Tables 1. Leonard Epstein-Joyce Norton, Dallas ; Eleanor Siegal, San Antonio ; Marjorie Norton, Laredo 2/3 Carol Murray-Carol Casey-Julie Butterfield-Linda Lindley, Dallas 2/3 Lynn Sykes-Sue Morgan-Nancy Clements, Belton ; Lennie Wilkins, Temple

Thursday Swiss Bracket 7-9 Tables 1. Barbara Franklin-Janice Trombello, Dallas ; Jane Canning, Frisco ; Joni Antweil, Plano 2. Dora Lee Sullins, Oklahoma City OK ; Carol Jenkinson, Montgomery ; Richard McGaughey, Sugar Land ; Dan Kahn, Dallas 3. Louise O'Brien-Molly Hamilton-Marj Frederiksen, Dallas ; Alice Bogdan, Richardson

Thursday Swiss Bracket 8-11 Tables 1. Gretchen Cash-Fred Carver, Dallas ; Barbara Taylor, Farmers Branch ; Robert Kayser, Carrollton 2. Julie Benson, Levelland ; Paula Park-Darnell Dingle-Francis Thornberry, Lubbock 3. Kenneth Melvin-Bill Brooks, Allen ; James Ross-Donald Livingston, Fairview

Wed-Fri Eve KO 1-8 Tables 1. Richard Pavlicek, Fort Lauderdale FL ; Walter Schafer Jr, Fountain Valley CA ; Michael Schreiber-Amy Downing, Plano 2. Jimmy Reynolds, Laredo ; Robert Johnson, Ajijic Mexico ; Tom Moore-Dorothy Moore, Keller

Friday Open Pairs-27.5 Tables / Based on 68 Tables A1. Phil Clayton, Frisco ; Jonathan Cohn, Gillette WY A2. Ned Irving, Hot Springs Vlg AR ; Donald Rumelhart, Ann Arbor MI A3. Georgiana Gates, Houston ; Ron LaCour, Georgetown A4. Robert Buchanan, Arlington ; Tomi Storey, Frisco A5. Charlene Sands, Pflugerville ; Virgil Massey, Driftwood B1. Scott Nason, Dallas ; Milton Neher, Richardson B2. Timucin Erkoc, Houston ; Karen Fireman, The Woodlands B3. Renee Levy-Helene Blumenau, Dallas B4. Jerry Frankel, Plano ; John Spessard, Dallas B5. Bill Osborn, Frisco ; Randolph Worsham, Dallas C1. Sylvia Jackson-William Hill, Oklahoma City OK 52.30%

2 Dolline Burton-Robert Burton, Georgetown C3. J Terrence Wolfe-William Driscoll, Richardson C4. Barbara Aide, Plano ; Judy Thompson, McKinney

Friday Gold Rush Pairs-28.0 Tables B1. Linda Buzan, Midland ; Mike Robinson, Odessa B2CD1. John Saylor, Grapevine ; Gail Wingfield, Irving B3C2. Ian Currell, Plano ; Mary Dodson, Houston B4C3. Frankie Lemasters-David Lemasters, Lake Charles LA B5C4. Jim Porter, Mc Kinney ; Charlotte Tunnell, McKinney C5. Larry Klein-Alice Wright, Denton C2. Nutan Saraiya, Highland Vlg ; Barbara Fogle, Flower Mound C3. Mary Jane Hall, Dallas ; Howard Cavins, Irving C4. Gail Trimble, Carrollton ; Wendelyn Vermillion, Dallas C5. June Kiley-Robert Kiley, Frisco

Friday Swiss Bracket 1-9 Tables 1. Robert Hollman, Santa Barbara CA ; Bruce Ferguson, Palm Springs CA ; Berend Van Den Bos, Den Haag ; Joris van Lankveld, Amsterdam 2. Richard Pavlicek, Fort Lauderdale FL ; Walter Schafer Jr, Fountain Valley CA ; Bart Bramley, Dallas ; Ira Hessel, San Antonio 3. Jack LaVigne-Phillip Grothus, Houston ; Michael Rosenberg, Sunnyvale CA ; Mark Lair, Canyon

Friday Swiss Bracket 2-9 Tables 1. Stefanie Scott, Little Elm ; Carmen Keys-Paul Cuneo, Houston ; Kristen Onsgard, Dallas 2. James McCommons-Nancy Harralson-Lue Waddle-Eileen Davidoff, Dallas 3. Steven Bell, Cypress ; David Ticen, Victoria ; Jerry Barrett, Austin ; Anne LaCour, Georgetown

Friday Swiss Bracket 3-9 Tables 1. Mickey Tryon-Stephen Hibbard, Arlington ; James Cothran, Savannah ; Jeanette McDonald, Flower Mound 2. Bob Otis, San Antonio ; David Robinson, Granbury ; John Montgomery-Carol Lombardino, Tomball 3. James Moody-Jarek Langer-Anita Albert, Austin ; Sharon Dameron, Cedar Park

Friday Swiss Bracket 4-9 Tables 1. Kathryn Bailey, Dripping Spring ; Mercedes Barker, Katy ; Ann McDougal, Houston ; Bob Dingle,

Carrollton 2/3 Frank Durante, Addison ; Nancy Latner-Lynn Cooper-Barry Cooper, Dallas 96.02/3 Richard Clements-Barbara Clements-Ken MacMorran-Sharon MacMorran, Austin

Friday Swiss Bracket 5-9 Tables 1. Clint Schuhmacher-Roslyn Miller-Carol Murray-Carol Casey, Dallas 2. Susan Young, Shreveport LA ; Susan Moss, Dallas ; Sharon Ward, Richardson ; Karen Jennings, Lafayette LA

Friday Swiss Bracket 6-9 Tables 1. Kenneth Melvin-Bill Brooks, Allen ; Connie Van Patter-Karen Roland, McKinney

2. Mary Lynn Genovesi, Fairview ; Karen Cohen-Linda Lindley, Dallas ; Martha Ward, Plano

Friday Swiss Bracket 7-9 Tables 1. David Noteware-Sam Norvell-Jeanne Wyatt-Anne Curry, Dallas 2. Eleanor Siegal, San Antonio ; Joyce Norton-Charles Golenternek, Dallas ; Marjorie Norton, Laredo

Friday Swiss Bracket 8-9 Tables 1. W Kenneth Davis-Susan Breeding-Judy Alpert-Mark Alpert, Austin 2. Lilly Justman-Cheri Gross-Aaron Denton, Austin ; Kathy Sinkin-Amor, San Antonio

Friday Swiss Bracket 9-11 Tables 1/2 Rhonda Norfleet-Patricia Reel, Wichita KS ; Cherry Blevins-Ramona Bienstock, Oklahoma City OK 1/2 Jole Luehrs-Margie Portela, Dallas ; Judy Zipkes, Addison ; Judy Bouska, Garland

Saturday Open Pairs-28.0 Tables / Based on 67 Tables A1. Phillip Goatz-Cynthia Goatz, Las Vegas NV A2. Jeff McKee, Banks OR ; Greg Resz, Weatherford A3. Ira Hessel, San Antonio ; Nancy Passell, Plano A4. Walter Schafer Jr, Fountain Valley CA ; Richard Pavlicek, Fort Lauderdale FL A5. Robert Buchanan, Arlington ; Tomi Storey, Frisco BC1. Robert Hauger-Alice Hauger, Tulsa OK 2 Stan Pushkarsky-Sandy Potts, Austin B3. John Spessard, Dallas ; Patricia Marchman, Garland B4/5 B J Sanders-Mark Sanders, Austin B4/5 Kalpana Sutaria-Swadesh Mahajan, Austin C2. Richard Clements-Barbara Clements, Austin C3. Rodney Bland-Pamela Bland, Arlington C4. Sylvia Jackson-William Hill, Oklahoma City OK

Saturday Gold Rush Pairs-27.0 Tables BCD1. Erin Gonzalez, Highland Vlg ; Carol Welch, Flower Mound BC2. Mark Meiches-Fred Seipp, Dallas BC3. Eugene Wuller, Coppell ; Stephen Wuller, Mansfield BC4. Judy Duval-Pat Glaser, Richardson B5/6C5. Janet Meyer-Asa De Vries, Dallas B5/6 Grace Daddario-Carol Segreti, Arlington D2. Rodney Wood-Joan Wood, Southlake D3. Gail Trimble, Carrollton ; Joan Chandler, Dallas D4. Feza Buyukdura, Fairview ; Frank La Cava, Dallas D5. Charles Hill, Keller ; Lawrence Fritz, N Richland Hls

Saturday Swiss Bracket 1-9 Tables 1. Hemant Lall-Petra Hamman, Carrollton ; Bart Bramley-Peggy Sutherland, Dallas 2. Colby Vernay, Lacon IL ; Barry Schaffer, Frisco ; John Bromberg, Dallas ; Ron LaCour, Georgetown 3. Bob Wilkin, Highland Vlg ; Pawel Hanus, Carrollton ; Harry Elliott, Cypress ; David Ticen, Victoria

Saturday Swiss Bracket 2-9 Tables 1. Joseph Gill-William Driscoll-J Terrence Wolfe, Richardson ; Adrienne Feuer, McKinney 2. Eileen Davidoff-James McCommons, Dallas ; Susan Kaplan, Houston ; Alfred Fortier III, Katy

Saturday Swiss Bracket 3-9 Tables 1. Chris Anderson-James Richman-Nancy Fellman, Dallas ; Elaine Wood, Keller 2. Stephen Birnbaum-Bob Butterfield, Dallas ; Jin Chu, Plano ; Kathleen Carr, Garland

Saturday Swiss Bracket 4-9 Tables 1. Connie Van Patter-Karen Roland, McKinney ; Sharon Ward, Richardson ; Martha Ward, Plano 2. Bob Otis, San Antonio ; John Montgomery-Carol Lombardino, Tomball ; David Robinson, Granbury

Saturday Swiss Bracket 5-9 Tables 1. Christopher Tsai-Liane Tsai, Plano ; Carla Joiner-Ann Parker, Dallas 2. Karen Jennings, Lafayette LA ; Hellen Revelle, Dallas ; Fran Hewitt-Todd Barnes, Shreveport LA

Saturday Swiss Bracket 6-9 Tables 1. Nancy Guthrie-Laura Chandler-Jeannie Stone, Houston ; Darlyn Dusek, League City 2. Jan Mogged-Charles Mogged Jr, Colleyville ; Jim

Dallas Election Sectional Jan 9 – 12, 2020

Richardson Civic Center SW Corner of Arapaho Rd. & US 75 Richardson, TX

Thursday, Jan 9th

Stratified Pairs: Open, 0- 499 & 0-49 (single sessions) 10:00 am & 2:30 pm
Bracketed Swiss Teams (2 Session Event) 10:00 am & 2:30 pm

Friday, Jan 10th

Stratified Pairs: Open, 0- 499 & 0-49 (single sessions) 10:00 am & 2:30 pm
Bracketed Swiss Teams (2 Session Event) 10:00 am & 2:30 pm

Saturday, Jan 11th

Stratified Pairs: Open, 0- 499 & 0-49 (single sessions) 10:00 am & 2:30 pm
Bracketed Swiss Teams (2 Session Event) 10:00 am & 2:30 pm

Sunday, Jan 12th

A/X Swiss Teams – 2 Session Event 10:00 am
B/C/D Swiss Teams – 2 Session Event (no player over 3000) 10:00 am
Stratified Open Pairs 10:00 am
Stratified Open Pairs 2:00 pm

Stratifications:

Open Pairs: A: 4000+, B: 3999-1500, C: 1499-0 (based on average masterpoints)

499er & 49er Stratified Pairs: Stratified at director's discretion (based on average masterpoints)

Swiss Teams: A: 5000+, AX: 0-5000 (based on average masterpoints) play together

B: 1500-3000, C: 500-1499, D: 499- 0 (based on average masterpoints) play together

Entry Fees: Current ACBL members \$13; non-current members \$17 per session. Non-members must purchase an ACBL membership. 30 Day Memberships are available for \$8. Sunday Games \$15 per session; Swiss: \$120 for team of four. Additional fees may be charged. ACBL members with 0-5 masterpoints play free Friday!

Tournament Co-Chairs: Eileen Davidoff – eileen_s@hotmail.com & Martha Young martha.wilkins.young@outlook.com

Partnerships: Ros Smith rosalindrsmith1@yahoo.com

Fragrance Policy: Please refrain from the use of perfumes and colognes as many players have allergies.

Hospitality: Snacks and drinks every session; lunch provided for Sunday games.

Tournament Director: Scott Humphrey

Hotel Info: Courtyard by Marriott, 1000 S Sherman St, Richardson, TX 75081; Phone: 800-321-2211; Rate: \$79 (Local # 972-235-5000. Ask for Dallas Bridge Tournament room block, reserve by Dec 10th)

Nixon-Judy Nixon, Flower Mound

Saturday Swiss Bracket 7-9 Tables 1. Sharon Seagraves-Susan Moss-Erica Walker, Dallas ; Kari Smith, Melissa 2. Donna Beene-Tom McCraw-Jessica McCraw, Fort Worth ; Phillip Brantley, Mansfield

Saturday Swiss Bracket 8-10 Tables 1. Victoria Sublette-Bill Brooks-Kenneth Melvin, Allen ; Stuart Nelan, Melissa

2. Gretchen Cash-Fred Carver, Dallas ; Barbara Taylor, Farmers Branch ; Robert Kayser, Carrollton

Sunday Open Pairs-17.0 Tables / Based on 49 Tables A1. Richard Pavlicek, Fort Lauderdale FL ; Walter Schafer Jr, Fountain Valley CA A2.. Bryan Storey, Frisco ; Tom Edwards, Grand Prairie A3. Phil Clayton, Frisco ; Jonathan Cohn, Gillette WY A4. Jeff McKee, Banks OR ; Greg Resz, Weatherford A5. Nancy Phillips-Raymond Zekauskas, Tulsa OK BC1. Robert Hauger-Alice Hauger, Tulsa OK 2. J Bachman Nabors III, Longview ; Neal Perlman, San Angelo B3C2.. Roxann Swenson-John Moore, Austin B4. Swadesh Mahajan -Kalpana Sutaria, Austin B5C3. Judy Brown-Ron Brown, Houston

Sunday Gold Rush Pairs-18.0 Tables / Based on 17 Tables B1. Jayaprakash Namburi-Anne Gopichand, Frisco B2C1. Robert Kayser, Carrollton ; Fred Carver, Dallas B3C2D1. Gail Trimble-Chuck Thomas, Carrollton B4C3D2.. Amy Adams, Dallas ; Ron Day, Plano B5C4D3. Darlene Campbell-Judy Wood, Dallas C5D4. Rodney Wood-Joan Wood, Southlake

Sunday Swiss Bracket 1-7 Tables 1. Pat Cassidy, Arlington ; Nancy Kornegay-Stephen Kornegay, N Richland Hls ; Dan Morse, Houston ; Nagy Kamel, Plano

Sunday Swiss Bracket 2-9 Tables 1. Marilyn Adams, Beaumont ; Anton (Tony) Haddad-Timucin Erkoc-James Breihan, Houston 2. Liane Tsai, Plano ; William Garrard-Donna Garrard, Irving ; Stephen Sinclair, Garland 3. Rich Brandenburg, Coppell ; Tony Pellegrini-Robert Holliday, Plano ; Joseph Gill, Richardson

Sunday Swiss Bracket 3-9 Tables 1. Jim Harp-Robert Scrimale-Paul Taylor, Dallas ; Cary Jennings, Fort Worth 2. Dave Sauder, Gainesville ; Joyce Stone-Charles Brown, Denton ; Jane Hopkins, Fort Worth

Sunday Swiss Bracket 4-9 Tables 1. Frank Durante, Addison ; Jeanne Wyatt-Anne Curry-Nancy Latner, Dallas 2. Thomas Rush-Nancy Reingold-Dolores Aquino-Mary Dodson, Houston

Sunday Swiss Bracket 5-9 Tables 1. Jan Mogged-Charles Mogged Jr, Colleyville ; Jim

leyville ; Rosalee Hacker, Southlake ; Bob Dingle, Carrollton 2. David Noteware-Sam Norvell, Dallas ; Sharon Ward, Richardson ; Martha Ward, Plano

Sunday Swiss Bracket 6-9 Tables 1. Lilly Justman-Aaron Denton-Cheri Gross, Austin ; Kathy Sinkin-Amor, San Antonio 2. Barbara Franklin-Elaine Lowenkron-Michael Lowenkron-Janice Trombello, Dallas

Sunday Swiss Bracket 6 Tables 1 Leonard Epstein-Tina Epstein-Susan Moss, Dallas ; Stuart Litwin-Sandra Litwin, Round Rock 2. Anna Thomas -Larry Hettick, San Angelo ; Denise Tabor-Mary Belcher, Metairie LA 3. Sharon Seagraves-Erica Walker-David Salem, Dallas ; Rebekah Hahn, The Colony

Monday Morn Open Pairs - 9.0 Tables A1. Stephen Sinclair, Garland ; Thomas Leberman, Plano A2. Marion Gebhardt, Richardson ; Jack Borenstein, Dallas A3B1. Vernon Earl Hodge - Carolyn Motes Jr, Dallas B2C1. Judy Duval - Pat Glaser, Richardson B3C2. David Luzzatto - Betsy Goldsmith, Dallas C3. Stewart Teasley, McKinney ; G Brantz, Plano

Monday Aft Open Pairs - 8.0 Tables / Based on 14 Tables AB 1. Sidney Perutz - Jo England, Dallas A2. Thomas Leberman, Plano ; Stephen Sinclair, Garland A3B2. Phyllis Gravitz, Plano ; Barbara Ferm, Dallas A4B3. Ian Kirk - Deanna Birch, Portland OR A5B4. Preston Morrow - Anita Platt, Dallas B 5. Lynne Wood, Richardson ; Peter Grenier, Dallas C1. Nancy Jipp, Dallas ; Nancy O'Fallon, Plano C2. Rebecca Page - Richard Page, Plano C 3. Judy Duval - Pat Glaser, Richardson C4. Linda Walton, Allen ; Barbara Lively, Plano

Monday A/X Swiss Teams-17 Tables / Based on 47 Tables A1. Robert Hollman, Santa Barbara CA ; Bruce Ferguson, Palm Springs CA ; Berend Van Den Bos, Den Haag ; Joris van Lankveld, Amsterdam A2. Ira Hessel-Ellen Hessel, San Antonio ; Peggy Sutherland-Norman Beck, Dallas ; Georgiana Peters, Grapeland ; Georgiana Gates, Houston A3. Richard Pavlicek, Fort Lauderdale FL ; Walter Schafer Jr, Fountain Valley CA ; Amy Downing-Michael Schreiber, Plano A4. Hemant Lall-Petra Hamman, Carrollton ; Phil Clayton, Frisco ; Bob Hamman, Dallas A5X1. Hua Yang-Yan Song-Tiger King, Plano ; Danny Feng, Frisco X2. Jerry Barrett, Austin ; Anne LaCour, Georgetown ; Neal Perlman, San Angelo ; J Bachman Nabors III, Longview X3. Harry Elliott, Cypress ; Bob Wilkin, Highland Vlg ; David Ticen, Victoria ;

Pawel Hanus, Carrollton

Monday B/C/D Swiss Teams-52 Tables B1. James Moody-Jarek Langer-Anita Albert, Austin ; Sharon Dameron, Cedar Park B2. John Moore-Roxann Swenson, Austin ; Edward Yetter-Bonnie Kay Yetter, Garland B3/4C1/2 Susan S Doe, Irving ; Robert Scrimale-Paul Taylor-Tom Whitesides, Dallas B3/4C1/2 Jack Hartel-Jill Hartel, McKinney ; Dan Woodward-Betty Woodward, Fairview B5/6 Peter Hudson, Coppell ; Charles Richards, Paris ; Marvin Migdol, Dallas ; Gregg Jernigan, Allen B5/6 Charles Burke-Caron Peck-Karen Caton, Arlington ; Richard Langland, Irving C3. Jo Shah-Gool Castleberry, Irving ; Lynda Bradley, Corinth ; Siddhi Vasa, Cherry Hill NJ C4. James Rider-Cheryl Rider-Kay Moran-Carol Adamek, Dallas C5D1. Carol Black, Grapevine ; Cynthia Bohnenblust, Eules ; Bansi Shah, Bedford ; Mary Springer, Hurst D2. Neill Ray-Wilton Crocker, Dallas ; Betty Mastick, Lavon ; Feza Buyukdura, Fairview D3. Janice Trombello-Joseph Trombello-Gano Ehlers, Dallas ; Anne Goodman, Fairview

1st Aft Side Series Final-29.25 Tables / Based on 14 Tables 1/2 Judy Peters, Grapeland 1/2 Thomas Peters, Grapeland 3. Vi Ganeles, Dallas 4/5 Deanna Birch, Portland OR 109.03% 4/5 Ian Kirk, Portland OR

1st Eve Side Series Final-22.75 Tables / Based on 12 Tables 1/2 Bob Scallan, Frisco 1/2 Suresh Agrawal, Heath 3. Steven Bell, Cypress 4. Kathleen Carr, Garland 5. Mary McGinnis, Dallas

2nd Aft Side Series Final-13.00 Tables / Based on 7 Tables 1/2 Elinor Hood, Portland 1/2 Sandra Stevens, Paige 3/4 Randy Ekman, Dallas 3/4 Mark Till, Dallas 5/6 Jules Schoenberg, Dallas

5/6 Hazel Schoenberg, Dallas
2nd Eve Side Series Final-17.50 Tables / Based on 11 Tables 1/2 Bob Scallan, Frisco 1/2 Suresh Agrawal, Heath 3. Neal Perlman, San Angelo 4. Kathryn Bailey, Dripping Spring 5/6 Sue Gerard, Mexico Mexico 5/6 Mary Ann White, Laredo

Morning Side Series Final-25.00 Tables / Based on 10 Tables 1/2 Deanna Birch, Portland OR 1/2 Ian Kirk, Portland OR 3/4 Paul VanHoorebeke, Lubbock 3/4 Helen Lauderdale, Lubbock 5/6 Richard Page, Plano 5/6 Rebecca Page, Plano

DALLAS LABOR DAY REGIONAL WINNERS



Tuesday Swiss Bkt 1
Gaylord Kasle, Nagy Kamel,
Pat Cassidy, Dan Morse



Tuesday & Thursday Open Pairs Flt A
Richard Pavlicek, Walter Schafer



Wed - Thurs Eve KO
Amy Downing, Richard Pavlicek
Walter Schafer, Michael Schriber



Saturday Open Pairs Flt A
Cyndi & Phil Goatz



Bracket 1 Sunday Swiss
Nancy Kornegay, Nagy Kamel
Pat Cassidy, Steve Kornegay



Friday Open Pairs
Jonathan Cohn, Phil Clayton



Bracket 1 Sunday
Bart Bramley, Peggy Sutherlin
Hemant Lall, Petra Hamman



Tuesday Swiss Bkt 2
Mercedes Barker, Jane Collins,
Kathryn Bailey, Steve Anderson



Tuesday Swiss Bkt 3
Laurie Babb, Robert Babb,
Emil & Marie Russiello



Wednesday Swiss Bkt 2
Mercedes Barker, Kathryn Bailey,
Steve Bell, Jerry Barrett



Wednesday Swiss Bkt 3
Bob Bender, Rich Brandenburg,
Stuart Nelan, Bob Holliday



Wednesday Swiss Bkt 4
Bonniue Shea, Nancy Morse
Linda Harley Terry Harley



Wednesday Swiss Bkt 5
Alma Farley, Judy Etcheson,
Bob Clarke, Scott Etcheson



Wednesday Swiss Bkt 6
Kathy Smith, Cliff Smith,
Bill Frazee, Jack Harkey



Wednesday Swiss Bkt 7
Jill Hartel, Don Livingston,
Jim Ross, Jack Harte



Bracket 2 Thursday Swiss
Adrienne Feuer, Mark Hatkoff
Lee Huber, Jon Browne



Bracket 3 Thursday Swiss
Bob Bender, Rich Brandenburg
Stuart Nelan, Bob Holliday



Bracket 4 Thursday Swiss
Janice Atterberry, Luraette Tucker
Travis Atterberry, Jim Tucker



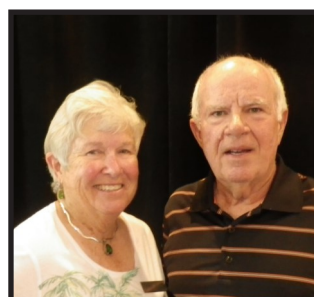
Bracket 6 Thursday Swiss
Margie Norton, Eleanor Siegal
Leonard Epstein, Joyce Norton



Bracket 7 Thursday Swiss
Barbara Franklin, Jane Canning
Joni Antweil, Janice Trombello



Bracket 8 Thursday Swiss
Barbara Taylor, Fred Carver,
Bob Kayser, Gretchen Cash



Gold Rush Thursday
Alice Wright, Larry Klein



Thursday Flight B
Kurt Zhang, Thomas Rush



Friday Swiss Bracket 3
Steve Hibbard, James Cothram
Micky Tryon, Jeannette McDonald



Bracket 6 Friday Swiss
Connie Van Patter, Karen Roland
Bill Brooks, Ken Melvin



Bracket 8 Friday
Ken Davis, Mark Alpert
Sue Breeding, Judy Alpert



Bracket 2 Saturday
Adrienne Feuer, Terry Wolfe (NP)
Joe Gill, Bill Driscoll



Bracket 3 Saturday Swiss
Elaine Wood, Nancy Fellman
Jim Richmond, Chris Anderson



Monday BCD Swiss Flt B
James Moody, Jarek Langer
Anita Albert, Sharon Dameron



Monday BCD Swiss Flt D
Mary Springer, Banshi Shah
Carol Black, Cynthia Bohnenblust



Sat PM 299er Pairs
Sheldon Markowitz



Bracket 5 Saturday Swiss
Carla Joiner, Liane Tsai
Ann Parker, Chris Tsai



Bracket 2 Sunday Swiss
Marilyn Adams, Timucin Erkoc
Jimmy Breihan, Tony Haddad



Bracket 4 Sunday Swiss
Frank Durant, Anne Curry
Nancy Latner, Jeanne White



Bracket 3 Sunday
Cary Jennings, Paul Taylor
Jim Harp, Bob Scrimale



Bracket 7 Friday Swiss
Margie Porgela, Jole Luehrs
Judy Bouska, Judy Cipkes



Bracket 6 Sunday Swiss
Aaron Denton, Lilly Justman
Cheri Gross, Kathy Sinkin-Amor



Bracket 7 Sunday Swiss
Leonard Epstein, Stuart Litwin
Tina Epstein, Sandra Litwin



Event Bracket 5 Swiss Sunday
Chuck Mogged, Bob Dingle
Jan Mogged, Rosalee Hacker



Gold Rush Pairs Sunday
Jay Namburi, Gopa Chand



Bracket 5 Friday Swiss
Carol Mussy, Carol Casey



Wed - Sunday AM Side Series
Sunday AM Side
Deanna Birch, Ian Kirk



Friday Open Pairs Flt B
Milt Neher, Scott Nason



Sat Swiss Bkt 4
Connie Van Patter, Karen Roland
Sharon Ward, Martha Ward



Bracket 6 Saturday
Laura Chandler, Jeannie Stone
Darlyn Dusek, Nancy Guthrie



Bracket 7 Saturday
Kari Smith, Susan Moss
Erica Walker, Sharon Seagraves



Bracket 8 Saturday
Bill Brooks, Victoria Sublette
Ken Melvin, Stuart Nelan

**Unit 183
Fort Western**



Chuck Mogged Jr.

"Never believe everything your oncologist tells you!" says **Mickey Tryon** of Arlington. **Mickey** has beaten the odds and unexpectedly achieved his "bucket list" dreams of walking his daughter down the aisle and holding his first granddaughter on his lap. On October 18th Mickey hosted his fourth annual Last Birthday Party at the Arlington Duplicate Bridge Club, with 13 full tables of his closest friends and bridge buddies in a stratified pairs game. Not only did Mr. Tryon generously spring for the bridge fees, but cash prizes were also offered to the winners of the evening. Flight A was won by **Steve & Nancy Kornegay** with a 68.1% game, and **Melody Gann & Bill White** placed second, with **Pat Cassidy & Jerry Derby** in third. Flight B was won by **Jan & Chuck Mogged**, with **Helen Nelson & Corrine Easley** taking second and **Dana & Dan Osburn** placing third. **Joyce Anderson & Connie Booth** took the prize for first in Flight C, and **Carol Segreti &**

Grace Daddario took home the Flight C second prize. Great food was provided, and a good time was had by all. We're all rooting for Mickey's success in achieving his next goal - to celebrate his FIFTH annual Last Birthday Party next October.

The Arlington Duplicate Bridge Club also had a great turnout for their Non-Life Master Sectional on August 10 & 11. Congratulations to **Dorothy Moore**, Tournament Chair, and to **Kimberly Newman**, who found partners for lots of players.

Congratulations to **Bruce Mann, Margot Hirsch, Peter & Diana Clive** for placing first in the Eight is Enough Unit Championship on September 7th - turnout was great, and so was the food.

The Unit 183 Fall Sectional in October saw **Nancy and Steve Kornegay** tied for the overall point lead. **Laura Nash** will take a seat on the Board, joining **Steve Shirey** and **Linda Spangler** who were both re-elected.

Denton Bridge Studio had a fantastic turnout for their October Non-Life Master Sectional, with 70 tables in play. Congratulation to **Feza**

Buyudura, who topped the field!

Chuck Mogged
1217 Tuscany Drive
Colleyville, TX 75034
(817) 851-6408

Fort Western

Fort Worth
Oct 11-13 2019
189 players 178 tables.

- 1 30.97 Stephen Kornegay
- 2 30.97 Nancy Kornegay
- 3 30.97 Nagy Kamel
- 4 23.76 Milton Neher
- 5 22.65 Tomi Storey
- 6 21.79 Kimmel Jones
- 7 21.79 Hugh Hillaker
- 8 21.79 Bill Staats
- 9 21.07 Michael Penick
- 10 18.93 Phil Clayton

Fri Bracketed Swiss Teams-2-8
Tables 1. Jack Harkey-Jean Higgins-William Higgins-Bill Frazee 2. Carolyn Marks-Kathy Coleman-Karen Collins-Jean Helmers

Fri Bracketed Swiss Teams -1-7
Tables 1. Nagy Kamel-Nancy Kornegay-Stephen Kornegay-Pat Cassidy 2. Michael Penick-Bill Staats-Kimmel Jones-Hugh Hillaker
Sat Aft Pairs-13.5 Tables A1. Tomi

Storey-Milton Neher A2. Norris Drum-Dorene Drum B1. Margot Hirsch-Bruce Mann B2. Donald Pigg-Milton Birmingham C1. Lawrence Brough-Darrick Chee C2. Allan Chernov-Bill Jernigan

Fri Morning Pairs-10.5 Tables / Based on 15 Tables A1. Billy Leeper-Bill Ream A2. Linda Spangler-Mary Orock BC1. T R Sartor-Harold Schulz 2 Robert Dixon-Dave Romack

Fri Morn 299r Pair-4.0 Tables AB1. Charles Hill-Bill Jernigan AB2. Darrel VanDyke-Carolyn Henderson

Fri Aft Pairs- 12.0 Tables / Based on 15 Tables A1. Michael Schreiber-Milton Neher A2. Sheri Gautier-Mark Bumgardner

BC1. Harold Schulz-T R Sartor B2. Zaeem Lutfi-William Eads

Fri Aft 299r-3.0 Tables AB1. Jim Turkett-Jim Harvey AB2. David Urbel-Sue Ragsdale

Sat Morn Pairs-13.0 Tables / Based on 19 Tables A1. Bill Ream-Susan O'Neil A2. Darlene Shirey-Mary Hoger C1. Vesta Snider-Mary Alice Giordano B2C1. Lynn Long-Cynthia Benton C2. Ivan Uys-Kerry Seibel

Sat Morn 299r-5.5 Tables AB1. John Saylor-Gail Wingfield A2. Lori Sloucum-Doug Hughes B2. Dennis Anderson-Wayne Corbett

Saturday Bracketed Swiss-7 Tables 1. Hugh Hillaker- Staats- Michael

Penick- Kimmel Jones 2. Phil Clayton-Nagy Kamel -Nancy Kornegay-Stephen Kornegay

Saturday Bracketed Swiss 2-10 Tables 1. Donald Hixson-Virginia Hixson-T R Sartor-Harold Schulz 2. Jan Mogged-Charles Mogged Jr-Letty Garek-Marjorie Deutsch

Sun Strat Fl A/X Swiss-8 Tables / Based on 26 Tables A1. Nancy Kornegay-Stephen Kornegay-Phil Clayton-Nagy Kamel A2. Amy Downing-Michael Schreiber-Milton Neher-Scott Nason X1. Donna Garrard-William Garrard-Robert Buchanan -Tomi Storey

Sun Bracketed Swiss -1-7 Tables 1. Michael Harris-John Moore-Sandra Harris-Roxann Swenson 2. Judy Nixon-Jim Nixon-Ross Ramsey-Larry White

Sun Bracketed Swiss -2-11 Tables 1. Virginia Boudreau-Donna Gibbs-Charles Hill-Bill Jernigan 2/3 Donald Hixson-Virginia Hixson-T R Sartor-Harold Schulz 2/3 Jeff Newman-Kimberly Dorsey-Newman-Joyce Anderson-Douglas Berke

OCTOBER FORT WESTERN SECTIONAL WINNERS



Friday Swiss Bkt 1
Nancy & Steve Kornegay,
Pat Cassidy, Nagy Kamel



Friday AM Open Pairs A
Bill Ream, Billy Leeper



Friday PM Open Pairs A
Milt Neher, Michael Schreiber



Saturday AM Open Pairs A
Susan O'Neil, Bill Ream



Saturday Swiss Bkt 1
Michael Penick, Bill Staats,
Hugh Hillaker, Kimmel Jones



Sunday Swiss Bkt A
Steve Kornegay, Phil Clayton,
Nancy Kornegay, Nagy Kamel



Saturday PM Open Pairs A
Milt Neher, Tomi Storey



Friday Swiss Bkt 2
William Higgins, Jean Higgins,
Bill Frazee, Jack Harkey



Friday AM & PM Open Pairs B&C
Hal Schulz, TR Sartor



Saturday Swiss Bkt 2
Hal Schulz, TR Sartor,
Virginia & Don Hixon



Saturday AM Open Pairs C
Cynthia Benton, Lynn Long



Saturday PM Open Pairs B
Margo Hirsch, Bruce Mann



Sunday Swiss Bkt X
Donna Garrard, Tomi Storey,
Bill Garrard, Buck Buchanan



Sunday BCD Swiss Bkt 1
Michael Harris, John Moore,
Sandra Harris, Roxann Swenson



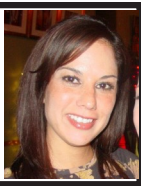
Sunday BCD Swiss Bkt 2
Bill Jernigan, Chuck Hill,
Donna Gibbs, Virginia Boudreau



Friday AM 299er Pairs
Chuck Hill, Bill Jernigan

**Unit 187
Corpus Christi**

Melissa Plumb



The South Texas Bridge Association would like to thank all who joined us in our sectional tournament. It was great seeing bridge friends from all over the state. Thanks to our team who assisted in contributing their time, delicious food, and muscle in creating a fantastic weekend. A special thanks goes out to Mary Ross and Martha DeCou for the countless hours used in organizing the event. In addition, Unit 187 would like to thank Russ and Kathe Powers along with the Rockport Bridge Club for their support.

Please join us on Sunday, December 9th at 2:00 P.M. for our Unit 187 Christmas Party. It will be a Unit Championship game accompanied by great food, friends, and spirits. We look forward to making wonderful memories with you.

It is with great sadness the South

Texas Bridge Association said farewell to our beloved and cherished friend, Claude Melton. We send our deepest condolences to his wife Ruby, son Carl (Tara), daughter Claudia, and grandchildren Zachary, Chelsie, Rubielle Melton, family and friends.

Many bridge patrons attended his celebration of life and were very moved by the service. Claude Lee Melton contributed to the community throughout his life. After graduating Salutatorian from Powell Point High School, he obtained a bachelor's degree in Chemistry and Mathematics and a master's degree in Education Administration. After graduating, Claude served as an officer of the United States Army during the Korean War.

Claude built a career on teaching students and being a principal for 29 years. In his spare time, he served at his church, was president of the Texas Jazz Festival for 15 years and was also a high and collegiate basketball referee for 27 years. Claude also loved to play duplicate bridge. He always had a smile on his face and was a joy to be around. Claude was filled with kind and encouraging words. His motivating and nurturing

character was truly a very special gift. If you were fortunate to know Claude, you would know and appreciate his humor. When I would see Claude at the bridge table and he saw a grey hair on my head, he would gasp with a shocked look on his face. He'd say "I don't know if you know this, but your hair is turning grey." I would turn my head at him and smile. Because he repeated this to me on numerous occasions with his eyes wide open and same shocked expression, I translated that to him telling me to color my hair. One great characteristics of Claude was he was very vocal, but not loud. He had an effective way of getting things accomplished with grace. There were many attributes that he was blessed with that we can learn from. Claude Melton will be greatly missed by our club and the many people in his life that adored him.

Unit 187 would like to wish all happy and safe holidays. See you at the bridge table.

Melissa Plumb
Melissaplumb187@yahoo.co—

Rockport Tournament

Oct 25-27 2019
105 players 110 tables

- 1 23.14 Ira Hessel
- 2 20.86 Harry Elliott
- 3 20.86 Donald Varvel
- 4 20.42 Stan Pushkarsky
- 5 20.42 David Ticen
- 6 18.18 Dave Swarhout
- 7 16.48 Kim Cox
- 8 15.92 Ellen Hessel
- 9 15.42 Terry Peterson
- 10 11.18 Susan Wheeler
- 11 11.18 Pat Roeh

Fri Aft Open Pairs - 20.0 Tables / Based on 24 Tables A1. Pat Roeh - Susan Wheeler A2. Ira Hessel - Ellen Hessel A2. Eric Rasmussen-Milton Birmingham B2. Tomme Atkinson-Marilyn Bein

Fri Aft 0-299 Pairs - 4.0 Tables ABC1. Jerry Eaton - Terri Eaton AB2. Linda Beauchamp - Nina Shannon C2. Nancy Burkhart - Connie Perkins

Fri Eve 0-299 Pairs - 3.0 Tables AB1. Mary Anne Wilkinson - Bill Samelson AB2. John Dover-Joe Alexander

Fri Eve Open Pairs - 15.0 Tables / Based on 18 Tables A1. Roxie Tom -

Tom Marsh A2. David Ticen-Stan Pushkarsky B1. Mabel Byrnes - W Lynn Swinger B2. Diana Afflerbach - Margaret Kennedy C1. Sara Rowe - Marion Beeler C2. Marilyn Bergman -Jerjean Houchins

Sat Morn Open Pairs - 22.5 Tables / Based on 26 Tables AB1. Kim Cox-Terry Peterson A2. Harry Elliott-Donald Varvel B2C1. Sara Rowe - Marion Beeler C2. Suzan McLallen - Susan Brown

Sat Morn 0-299 Pairs - 3.0 Tables ABC1. Jerry Eaton - Terri Eaton ABC2/3 Thomas Neagli - Ernest Politte ABC2/3 Patricia Good - Charles Good

Sat Aft Open Pairs - 25.0 Tables A1. Dave Swarhout - Ira Hessel A2B1. Kim Cox-Terry Peterson B2. John Moore - Roxann Swenson C1. Charles Good - Patricia Good C2. Glen Mabee - Marilyn Markow

Sunday Swiss Teams - 17 Tables A1. Harry Elliott-Donald Varvel-David Ticen-Stan Pushkarsky A2. Rosemary Kelley - Diane Olson - Jerrold Harrington-Bill Walker B1. Carol Ramberg-Jeanne Dawley-Paula Wissman-Dave Becker B2. Russel Powers - Katherine Powers-Donald Hixon - Virginia Hixson C1. Susan Wheeler - Pat Roeh - Nancy Burkhart - Connie Perkins

UNIT 197 ROCKPORT SECTIONAL CHAMPS



Friday Afternoon Pairs A,B & C
Pat Roeh, Susan Wheeler



Friday Evening Pairs A
Tom Marsh & Roxie Tom



Saturday Morn Pairs A&B
Saturday Aft Pairs B
Terry Peterson, Kim Cox



Eleanor Sherwyn Swiss Team A
Don Varvel, David Ticen,
Harry Elliott, Stan Push



Friday Eve Pairs B
Mabel Byrnes, Lynn Swinger



Friday Eve Pairs C
Saturday Morn Pairs C
Sara Rowe, Marion Beeler



Saturday Aft Pairs C
Charles & Patricia Good



Eleanor Sherwyn Swiss Team B
Jeanne Dawley, Carol Ramberg



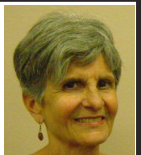
Friday Aft 299ers
Saturday Morn 299ers
Terry & Jerry Eaton



Friday Evening 299ers
Bill Samelson, Mary Anne Wilkinson

**Unit 201
Sabine Neches**

Linda Briggs



The Beaumont August Sectional for 499ers/Non-LM, Aug. 15-17, was chaired by Val Townley-Smith, Flo Ferguson, and Lucille Armintor, partnership. Carolyn Oliver and Jerry Gore won the John and Nancy Smalley trophy for scoring the most points(6.04) in the three-day tournament. Other U201 high scorers were

Joe Kazmar (6.04), Susan Pennington (6.04), Betty Kirwin (3.91)and Melva JaneKalkbrenner (3.66) Jim and Edwina Landrum hosted the yearly Labor Day hot dog meal, September 2. The 12 table party resulted in 1st place - John Smalley and Dr. Aiyadar Bharathi; 2nd - Flo Gillispie and Arline Meyers; 3rd - Susan Gore and Pat Bell. The highest monthly totals for August were Carolyn Oliver, Flo Gillispie, and Arline Meyers. September - Dr. A. Bharathi, Nancy Smalley, and Arline Meyers. Players with 70% or above games in August/

September were Bill Delboy and Phyllis Mann. August mentor pairs placing: 1st - Cleo Martin and Kaz Bell; 2nd - Nicholas Bonrepos and Juinez Moss; 3rd - Betty Kirwin and Jerry Heckman. August mentor teams placing: 1st - Helen Williams, Val Townley-Smith, E.W. Sweeney and Dr. A. Bharathi.; 2nd - Carolyn Oliver, Jobie Irvine, John Kacher and Arline Meyers. 3rd - Kay Hooper, Joe Kazmar, Wayne Oliver and Carol McGill. September mentor pairs placing: 1st - Betty Kirwin and Jerry Heckman, 2nd - Lou Ida Rising and Carolyn Wors-

ham; 3rd - Emily Cox and Don Moss. September mentor teams placing: 1st -Carolyn Oliver, Jobie Irvine, Betty Poindexter and Arline Meyers; 2nd - Helen Williams, Val Townley-Smith, E.W. Sweeney and Dr. A. Bharathi; 3rd - Glenda Bass, Lou Ida Rising, Pat Bell, and Carolyn Worsham. The Beaumont Gusher Regional to be held September 23-29 was cancelled due to flooding at the Elegante, the event site, from Tropical Storm Imelda. Chairman Carolyn Worsham expressed the deep disappointment shared by all after the hard work pre-

paring and the hopes for players earning gold points to reach their goals.

**Beaumont 499er
Sectional**

08/15-08/17/2019
32 players 36 tables.

- 1 6.04 Jerry Gore
- 2 6.04 Carolyn Oliver
- 3 5.04 Helene Gersch
- 4 5.04 George Rosen
- 5 4.65 Susan Pennington
- 6 4.65 Joseph Kazmar
- 7 3.91 Mary Kirwin

BEAUMONT 499er WINNERS



Jane Kalkbrenner, Betty Kirwin
Thursday Aft Pairs
Saturday Aft Pairs



Cleo Martin, Glenda Bass
Saturday Aft Pairs



Joe Kazmar, Susan Pennington
Friday Morn Pairs



Martha West, Lillian Greenwald
Thursday Morn Pairs



Louise Trahan, Lois Breaux
Thursday Morn & Aft Pairs



David Payne, Jobie Irvine
Friday Morn Pairs



Virginia Mayhew, Sharon Kirkland
Saturday Morn Pairs



Helene Gersch, George Rosen
Friday Aft Pairs



Carolyn Oliver, Jerry Gore
Winners of the John & Nancy Smalley Trophy

8 3.66 Melva Jane Kalkbrenner
9 3.60 Louise Trahan
10 3.60 Lois Breaux

Thurs Morn NLM Pairs-7.0 Tables
AB1. Louise Trahan-Lois Breaux
AB2. Babs Clingo-Walt Clingo
Thurs Aft NLM Pairs-7.5 Tables
A1. Mary Kirwin-Melva Jane Kalkbrenner
A2. Jerry Gore-Carolyn Oliver
C1. Lois Breaux-Louise Trahan
C2. Susan Pennington-Joseph Kazmar

Fri Morn NLM Pairs-6.5 Tables
AB1. Susan Pennington-Joseph Kazmar
AB2. Helene Gersch-George Rosen
C1. David Payne-Jobie Irvine
C2. Ruth Hancock-Paula Burton
Fri Aft NLM Pairs-6.0 Tables
AB1. Helene Gersch-George Rosen
A2. Jerry Gore-Carolyn Oliver
B2. Cleo Martin -Glenda Bass

Sat Morn NLM Pairs-5.0 Tables
AB1. Virginia Mayhew-Sharon Kirkland
A2. Ronnie Martin-Darlyn Dusek
B2. Lucille Armintor-Patricia Woods
Sat Aft NLM Pairs-4.0 Tables
A1. Melva Jane Kalkbrenner-Mary Kirwin
A2. Jerry Gore-Carolyn Oliver
B1. Cleo Martin-Glenda Bass
B2. Virginia Mayhew-Sharon Kirkland

Unit 204
Fort Concho

Neal Perlman

Our game is the best, I think most of of the 160,000 + ACBL members agree. What a great cross section of fun and interesting people. Augie Boehm ended his book Big Deal (2014) with the following: "Hope to become a feared, yet respected, opponent while being a sympathetic and coveted partner. Then you will have achieved something much grander than being a good card player. " I want to thank all the District 16 folks who embody and carry on in this fashion, near and far, we know who you are!!

Here are some other pearls from the same book. Be careful of "premature conclusions, both in the bidding and on defense. Bridge is a game of collaboration, and experts constantly try to help each other solve problems." "time and again their careful, detailed approach in the bidding carried the day. ... they relied on remorseless accuracy". What a great description of the dominant Blue Team from Italy.

He goes onto caution us on the danger of misunderstandings and suggests being practical in calls that say something simple. "Except for concentration, logic is the most important attribute of a good player —If this is true, then what must logically follow??" "Improving card play technique to take your tricks is the most important because you use these skills every session. "

I wanted to end with thanks to all the Unit 204 teachers, dealers, helpers, volunteers, gardeners and quiet contributors to local operations. That includes all the defenders and declarers that show us how good bridge is realized.

Carol Diminie and Mary Bloodworth had a 73% game in September.

Unit 205
Amistad
Western Mexico

Mary Ann White

Welcome back to our seasonal bridge clubs in Puerto Vallarta, Mazatlan, and Cabo, and to all of our friends from Canada who are joining us for the winter! It's always great to see you again and enjoy the pleasure of your company at the bridge table.

Supervised bridge at the Lake Chapala DBC is currently scheduled to commence on Wednesday, November 13. For a special treat this year, Barbara Seagram will be visiting Lake Chapala and has agreed to present a few of our Wednesday lessons. Barbara is a Canadian bridge writer, teacher, and administrator. She is the co-author of 26 published bridge books, including "25 Bridge Conventions You Should Know," which received the American Bridge Teachers' Association Book of the Year award in 1999. The book has been named one of the top five best-selling bridge books of the last 50 years. What an honor to have her with us!

The Lake Chapala DBC participated in the Inter-Club Championship Game on September 26. Dennis and Linda McGarry were the overall winners with 64.92% (9 tables). That was good enough for 7th place overall with over 500 pairs participating. Dagmar Rettberg and Mike Roney finished 22nd overall with 61.62%, while Nicci Beninger and Lane Galloway were 22nd overall in B with 57.12%. Good job everyone!

Congratulations to the following LCDBC players who scored 70% games in August and September: Dennis and Linda McGarry posted 70.04% on August 27 (9½ tables). It was Norm Rosenblatt and David Hoogenberg who hit the mark on September 12 with 71.13% (8½ tables). Good going!

Congratulations also to Neal Hayden of the LCDBC for achieving the rank of Junior Master and Barbara Stephan for becoming a Sectional Master!

In Memoriam. It is with a heavy heart that we remember long-time Lake Chapala resident Joe Reed, who passed away in September. Joe played at the Lake Chapala DBC for many years. Those who played with him can attest that he knew how to be gracious at the bridge table. Joe and his wife had recently returned to live in the States. We wished him farewell then; we wish him Godspeed now on his final journey. He will be missed by his many friends at the Club and in the Lake Chapala area.

Unit 207
Austin

Sue Caulfield

Hello all! Even though the holidays are upon us there is still a full schedule of events at our unit clubs and in the surrounding area. Plan to play and Happy Holidays!

SPECIAL EVENTS AND GAMES 199er Sectional (at the BCA) December 7th & 8th
This is a stratified (3 strats) event. What better way to win points and play against your peers.

UNIT HOLIDAY PARTY December 14th
Food (free lunch included), friends, and lots of bridge. There are 2 single session events that will be split into Open and 299er sections. What are the holidays without a fun party? Plan on playing!

STaC (Sectional Tournament at Clubs) December 16th to 22nd (for Unit 207)
More points available at your club for an entire week.

Austin Bridge Sectional January 2nd to 5th, 2020
All events to be held at the Crowne Plaza. For hotel details and a schedule of events, see our ad in this edition of the Scorecard or the flyer posted on the Unit 207 website (<http://www.austinbridge.org/>).

More info on other unit special games and tourneys can be found on Unit 207's website (<http://www.austinbridge.org/>) and on the BCA's (<http://www.bridgecenteraustin.com>).

CONGRATULATIONS TO AUSTIN CHAMPS SAM DINKIN AND LYNN BAKER!
They won the September 27th Wuhan Grand Prix, a World Teams Competition being held in Wuhan, China.

Lynn had qualified to represent the USA in the Venice cup as well

Outstanding Players in an exceptionally challenging international competition.

Well done. You do Austin proud. See picture at end of column.

MILESTONE ACHIEVEMENTS
More members have reached new levels. Congrats to all!
September Achievements:
Junior Master: John Adams, Judith Enright, Fred Grafton, Barbara Smith,
Club Master: Mary Hope Boynton, Gulrukh Deneau, Aaron Denton, Donna Johnson, Suzanne Matthews, Stephanie Reed, **Sectional Master:** Lilly Justman, **Regional Master:** Karen Elaine Dameron, Ann Denton, Dorothy Foster, Cheri Gross, **Adv**

NABC Master: Judy Alpert, **Bronze Life Master:** Glenn Zauber, **Silver Life Master:** Lazaro Brenner, Dolline Burton, Robert Burton, Jarek Langer, **Ruby Life Master:** James Moody, **Gold Life Master:** Jerry Barrett, **Sapphire Life Master:** Harry Ingham

A few of the achievers who attended the lunch in October are pictured with names at the bottom.

Congratulations to all!! Well Done.

PASSINGS TO NOTE
Harriette Bowles: In August, Harriette Bowles, a longtime Austin bridge player, passed away. She loved playing and was a Silver Life Master. For years Harriette actively participated in unit events and would always volunteer to help when needed. Harriette played well into her 90s and was 99 when she passed away. Friends like Harriette will be missed by all who knew her.
Ruben Ramirez: After a long illness, Ruben Ramirez passed away in September. He was introduced to bridge in 2005 when he was asked to be an interpreter for a native Spanish speaker taking lessons at the bridge club. Once introduced to our favorite game, he really wanted to learn how to play and did achieve Club Master before his passing. Ruben was always willing to help someone when they needed it. I think Scott Humphrey said it best when he wrote "Ruben Ramirez

was a gifted artist, wonderful cook, tender gardener, great homemaker, talented handyman and most of all, a kind, warm and generous human being." There are too few Rubens in the world. He will be missed.

BOLS BRIDGE TIP from Howard Schenken (USA)

Howard Schenken was a syndicated bridge columnist from New York City. He won three [Bermuda Bowl](#) titles, and set several North American records. Most remarkably he won the [Life Master Pairs](#) five times, the [Spingold](#) twelve, and the Vanderbilt ten times.

His tip came in 2nd in the 1975 Bols competition.

Take Your Time at Trick One
"When on defence in third position, cultivate the habit of playing slowly to the first trick. Careful thought will help you defeat many more contracts."

We all need to think a little more.

WHAT WOULD YOU LIKE TO READ IN THE SCORECARD?

There's never a better time than now to suggest new topics. Email me those suggestions or talk to me at the Bridge Center. Your thoughts make our newsletter better!
susiecc@comcast.net



Milestone Jerry Barrett, Scott Humphrey, Ann Denton, Cheri Gross, Stephanie Reed, Elaine Dameron, Dorothy Foster



Wuhan, China Sam Dinkin, Lynn Baker, Karen McCallum, JoAnna Stansby, with Gianarrigo Rona and Yong Haihong, the General Manager Assistant of Hubei Shihua Wine



Thursday, January 2
 Stratified Swiss Teams, single session 10am, 2:30pm
 Stratified Open Pairs, single session 10am, 2:30pm, 7pm
 Stratified 299er Pairs, single session 10am, 2:30pm

Friday, January 3
 Two-session Bracketed Swiss Teams 10am, 2:30pm
 Stratified Open Pairs, single session 10am, 2:30pm, 7pm
 Stratified 299er Pairs, single session 10am, 2:30pm

Saturday, January 4
 Two-session Bracketed Swiss Teams 10am, 2:30pm
 Stratified Open Pairs, single session 10am, 2:30pm
 Stratified 299er Pairs, single session 10am, 2:30pm

Sunday, January 5
 Strati-flighted Swiss Teams A/(X=0-3000) 10am & TBD
 Bracketed Swiss Teams (0-2000)* 10am & TBD
 *Note: No player over 2000 can play in the 0-2000 Bracketed Swiss

Meal served between morning & afternoon sessions on Sunday
 Pictures of Section Winners Posted Daily at austinbridge.org

CROWNE PLAZA 6121 N Interstate 35 Austin, TX 78752
Bridge Special \$105 BOOK BY DECEMBER 12th Use Code CBA
512-323-5466 **Rate Based on Availability**

STRATIFICATIONS (Pair and team games based on average MPs)
 Open Pairs & Stratified Swiss: A: 3000+, B: 750-3000, C: 0-750
 299er Pairs: A: 200-300, B: 100-200, C: 0-100
 Sunday AX & Bracketed Swiss: Director has discretion on the A/X break; 7 teams/bracket

ENTRY FEES
 \$12/session (\$16 for unpaid members of the ACBL)
 \$120/Sunday Swiss Teams (includes meal)
 Players with 0-5 masterpoints play for \$7 in pairs games.
 This is a Fragrance-Free Tournament

Chairpersons: Sharon Hoger, skhoger@att.net, 512-284-4600
 Dean Truair, dtruair@gmail.com, 512-799-0605

Partnerships: Pat Berry, ppatberry@aol.com, 512-949-9444
FOR PARTNERS CALL PAT OR TRY OUR ONLINE PARTNERSHIP DESK—IT'S GREAT!!
<https://web3.acbl.org/partnershipdesk/search-events/tournament/2001310>

Director in Charge: Kevin Perkins

Austin Fall NLM Regional
 Sep 19-22, 2019
 166 players. 200 tables.
 1 13.61 Sally Sassen, Austin
 2 12.99 Michael Sadler, Abilene
 3 12.99 Alan Wakefield, Roscoe

4 11.89 Wendy Marks, Austin
 5 11.35 William McDonald, LA
 6 10.43 Bob Allen, Austin
 7 9.37 Stuart Litwin, Round Rock
 8 8.65 Leilani Rose, Austin
 9 7.00 Preston Olivent, Georgetown
 10 7.00 Carolyn Olivent, Georgetown
 11 6.93 Roger Farish, Lewisville
 12 6.93 Linda Farish, Lewisville
 13 6.92 Robert Thornton, Horseshoe Bay
 14 6.88 Mark Burton, Aurora CO
 15 6.88 Jennifer Burton, Aurora CO
 16 6.86 Pam Pannell, Georgetown
 17 6.62 Margaret Erwin, Denton
 18 6.62 Carolyn Henderson, Highland Vlg
 19 6.00 Janet Daniel, Horseshoe Bay
 20 5.71 Tim Elsea, Georgetown
 21 5.71 Charlotte Gates, Georgetown
 22 5.55 Mark Alpert, Austin
 23 5.55 Judy Alpert, Austin
 24 5.50 R Gary Marquart, Austin
 25 5.34 Ramona Granger, Cedar Park
 26 5.34 Diana Apgar, Austin

Thu Gold Rush Pairs-24.5 Tables / Based on 21 Tables A1. Sally Sassen-Leilani Rose, Austin A2B1. Diana Apgar, Austin; Ramona Granger, Cedar Park A3B2. Janet Daniel-Robert Thornton, Horseshoe Bay A4B3. Jennifer Burton-Mark Burton, Aurora CO A5B4. Janet Sheppard, Plano; Marilyn Foote, Dallas B5C1. Pam Pannell-Jody Westland, Georgetown C2. Sharon Evans, Boerne; Nancy Tom, San Antonio C3. Phillip Lattavo-Judith Lattavo, Tucson AZ C4. Martha Allen-Dave Young, Georgetown

Fri Gold Rush Pairs-31.0 Tables / Based on 29 Tables A1B1. Alan Wakefield, Roscoe; Michael Sadler, Abilene A2. Wendy Marks-Bob Allen, Austin A3. Neill Ray, Dallas; Anne Goodman, Fairview A4B2. Linda Farish-Roger Farish, Lewisville A5B3. Mark Burton-Jennifer Burton, Aurora CO B4. Robert Thornton-Richard Day, Horseshoe Bay B5. Annetta Hughson, Kyle; Lois Kertesz, San Marcos C1. Cindy Johnson, Austin; Cindy Walthall, The Hills C2. Cheri Gross, Austin; Martin Hrachovy, Houston C3. Pam Pannell-Shirley Stoner, Georgetown C4. Dan Mudgett-Judy Devore, Austin C5. Dianne Morris, The Hills; Pamela Strange, Austin

Sat Gold Rush Pairs-26.0 Tables / Based on 24 Tables AB1. Stuart Litwin, Round Rock; William McDonald, Covington LA AB21. Carolyn Henderson, Highland Vlg; Margaret Erwin, Denton AB3. Francis Gay-Paula Gay, Houston AB4. Michael Sadler, Abilene; Alan Wakefield, Roscoe AB5. Karen Oberling-John Haussmann, Georgetown C2. Pam Pannell-Jody Westland, Georgetown C3. Phillip Lattavo-Judith Lattavo, Tucson AZ C4. Lawrence Fritz-Anne Fritz, N Richland Hls C5. John Dover, San Antonio; Thomas Neagli, Corpus Christi
Sun Br Swiss Teams-1-7 Tables 1. Tom Bell-Cindy Bell, Austin; Preston Olivent-Carolyn Olivent,

Georgetown = 2. Mark Alpert-Judy Alpert-Ron Sassen-Sally Sassen, Austin 3. Wendy Marks-Bob Allen-R Gary Marquart, Austin; Kathy Parker, Tucson AZ
Sun Br Swiss Teams-2-8 Tables 1. Michael Edwards-Sherlene Edwards-Tim Elsea-Charlotte Gates, Georgetown 2. Elizabeth Bartek-Dell Cupit-Sandra Thompson-Helen King, San Antonio 3. William McDonald, Covington LA; Stuart Litwin, Round Rock; Nancy Tom-Lelia Jackson, San Antonio

Austin Fall Sectional

Sep 19-22 2019
 222 players.: 238 tables.

1 64.37 Kenneth Schutze
 2 46.26 Ira Hessel
 3 33.56 Robert Donathan
 4 31.59 Virgil Massey
 5 31.59 Charlene Sands
 6 29.22 Ellen Hessel
 7 26.78 Paul Tobias
 8 25.41 Stephen Toplansky
 9 23.32 Pam LaShelle
 10 21.69 Donna Swarouth

Thu Morn Open Pairs-16 Tables / 32 Tables A1. Jim Hilton-Kenneth Schutze A2. George Watkins-Linda Anthony BC1. G Kania-Kalyan Venkat BC2. Larry Smith-David Warner
Thu Aft Open Pairs-10.5 Tables / 27 Tables A1. Kenneth Schutze-Jim Hilton A2. Janis Lillie-Harold Lillie BC1. Sara Sevey-Jim Sevey BC2. Julie Valentine-Steven Hollahan
Thu Morn Swiss Teams-15 Tables A1. Charlene Sands-Virgil Massey-Donna Swarouth-Dave Swarouth A2B1. Karen Elaine Dameron-Sharon Dameron-Lazaro Brener-Eric De Rouffignac B2C1. Richard Day-Esther Ellis-Jo Dee Bowen-Melinda Simmen C2. Rebecca Parmentier-Barbara Clements-Richard Clements-Laura Craft

Thu Aft Swiss Teams-19 Tables A1. Pam LaShelle-Anne LaCour-Swadesh Mahajan-Kalpana Sutaria A2BC1. Rita Wiegenstein-William McIndoo-Marc Levin-Eugene Jackson III 2/4 2 Charles Aufill-Danna Redford-Shirley Holland- Leona Rieger B2/4 Stan Pushkarsky-Sandy Potts-Laura Delfeld-Terri O'Brien B2/4 Harry Ingham- Ralph Simon- Dean Truair-Kalyan Venkat

Saturday Swiss Bracket 1-7 Tables 1. Stephen Toplansky-Kenneth Schutze-Ellen Hessel-Ira Hessel 2. Charlene Sands-Virgil Massey-Donna Swarouth-Dave Swarouth

Saturday Swiss Bracket 2-10 Tables 1. Karen Elaine Dameron-Sharon Dameron-Lazaro Brener-Ann Roe 2.

Ken MacMorran-Sharon MacMorran-Meg Putman-Mark Anderson
Sat Morn Open Pairs-15.5 Tables / Based on 36 Tables A1. Elizabeth Tobias-Ron LaCour A2BC1. Robert Tyler-Lilly Justman B2. Ed Davis-Tricia Kane C2. Thomas Thomas-Diana Thomas
Sat Aft Open Pairs-12.5 Tables / Based on 29 Tables A1. Joe Black-Neal Perlman A2. George Watkins-Linda Anthony BC1. Susan Breeding-James Glathar BC2. Bobbie Gruhlkey-Shirley Holland

Fri Swiss Teams-15 Tables A1. Charlene Sands-Virgil Massey-Dave Swarouth-Donna Swarouth A2B1. Ken MacMorran-Sharon MacMorran-Richard Frankeny-Diana Frankeny B2. Cynthia Rivet-Sue Alt-Richard Clarke-James La Fountain 1/2 Esther Ellis- Clara Wood-Tom Crouch- Liz Hinkle 1/2 Sunny Laird- Harvey Browning Georgetown TX; David McCarron-Mary McCarron

Fri Aft Swiss Teams-16 Tables A1. George Watkins-Tricia Kane-R Harry Akin-Marilou Powell A2B1. Cynthia Rivet-Sue Alt-Richard Clarke-James La Fountain B2C1. Clifford Smith-Kathy Smith-Amanda Stewart-Peggy Casey Fitzpatrick C2. David McCarron-Mary McCarron-Sunny Laird-Harvey Browning

Fri Morn Open Pairs-14.5 Tables / Based on 36 Tables A1. Ira Hessel-Kenneth Schutze A2. Hanan Lushkov-Alexander Labry B1. Dean Truair-G Kania B2. Joseph Giordano-George Watkins C1. Ken Hanson-Augustyn Ortynski C2. Julie Valentine-Steven Hollahan

Fri Aft Open Pairs-14.0 Tables / Based on 35 Tables A1. Kenneth Schutze-Ira Hessel A2. Paul Tobias-Pam LaShelle B2. Jim Hilton-Lee Stokes Hilton B1. Ken Hanson-Augustyn Ortynski B2. James Moody-Jarek Langer

Sun 0-2000 Br Swiss Te-1-7 Tables 1/2 Ken MacMorran-Sharon MacMorran-Steven Andersen- Arthur Widen 1/2 Rita Wiegenstein-Inez Grider-Don Grider-William McIndoo
Sun 0-2000 Br Swiss Te-2-7 Tables 1. Richard Clements-Barbara Clements-Spencer Ledlow-David Mead 2. David Warner-Larry Smith-Charlotte Riviera-Joanne Kerr

Sun A/X Swiss Teams-14 Tables / Based on 38 Tables A1. Stephen Toplansky-Kenneth Schutze-Ellen Hessel -Ira Hessel A2. Larry Davis-Robert Donathan-Charlene Sands-Virgil Massey X1 Dean Truair-Robert Tyler -Lilly Justman-Mary Anne Laier X2. Anita Albert-Linda Anthony-Richard Clarke Austin TX; Sharon Dameron

AUSTIN SEPTEMBER SECTIONAL and NLM REGIONAL



Fri AM Swiss Teams Flt B
 Ken & Sharon MacMorran,
 Diana & Richard Frankeny



Thurs AM Swiss Teams Flt C
 Esther Ellis, Kingsland, Richard Day



Fri AM Swiss Teams Flt C (tie)
 Liz Hinkle, Esther Ellis,
 Tom Crouch, Clara Wood



Thurs PM Swiss Teams Flt B,C
 William McIndoo, Rita Wiegenstein,
 Eugene Jackson III, Marc Levin



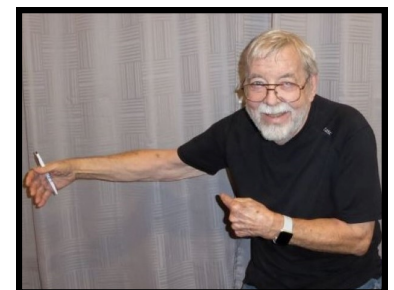
Fri AM Open Pairs Flt B
 Dean Truair, G Kania



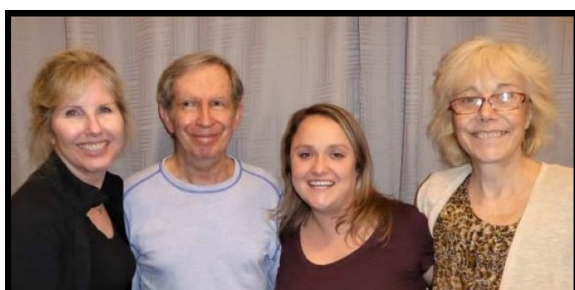
Fri PM Swiss Teams Flt B
 Cynthia Rivet, James La Fountain,
 Sue Alt, Richard Clarke



Fri PM Swiss Teams Flt C
 Amanda Stewart, Peggy Casey Fitzpatrick



Fri PM Open Pairs Flt B
 Charles Brown, (NP), Ted Pontius



Sat Bracketed Swiss Teams Brkt 2
 Ann Roe, Lazaro Brener,
 Karen Elaine Dameron, Sharon Dameron



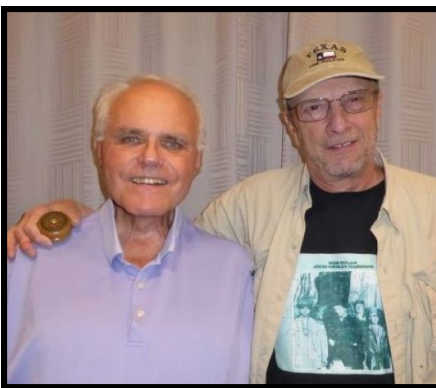
Sat PM Open Pairs Flt B, C
 James Glathar, Susan Breeding



Sat AM Open Pairs Flt B, C
 Lily Justman, Robert Tyler



Thurs AM Open Pairs
 Flt B, C
 G Kania, Kalyan Venkat



Sat PM Open Pairs Flt A
Joe Black, Neal Perlman



Sat Swiss Bkt 1
Sun A/X Swiss Flt A Ellen & Ira Hessel,
Kenneth Schutze, Stephen Toplansky



Sat AM Open Pairs Flt A
Ron LaCour, Elizabeth Tobias



Fri AM & Fri PM Open Pairs Flt A
Kenneth Schutze, Ira Hessel



Sun BCD Swiss Brkt 2
Richard & Barbara Clements, David Mead



Sun BCD Swiss Brkt 1 (tie)
Ken & Sharon MacMorran,
Arthur Widen

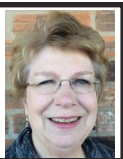


Sun BCD Swiss Brkt 1 (tie)
William McIndoo, Rita Wiegenstein,
Inez & Don Grider



Thurs & Fri AM Swiss Teams Flt A
Dave Swarthout, Donna Swarthout,
Virgil Massey, Charlene Sands

**Unit 209
Permian Basin**
Ann Parish



We opened September with a Labor Day game on September 2. We had 6 1/2 tables, with hamburgers and all the trimmings for our supper. First in A and B were **KC Evans** and **Scott Vaughn**. Tied for 2/3 in A and B were **John Cox** and **Linda Scarpelli**, and **Greg Keys** and **David Hudson**. **John** and **Linda** were also first in C. Fourth in A and B were **Marlene Blumentritt** and **Audie Brooks**.

On Saturday September 14, we had our NAP 2-session game with our usual delicious sandwiches and potato salad from Jojo's restaurant. The seven-table morning game was won by **Charlie Grimes** and **Ann Servatius** N/S and **Deborah Brookins** and **Marilyn Matthews** E/W. The afternoon game and overall game were won by **Deborah Brookins** and **Marilyn Matthews** N/S and by **Paula Baggett** and **LaDoyce Lambert** E/W.

We enjoyed the visitors passing through Midland who contacted us and came to play a little duplicate. **Barbara Crewes** came to West Texas for a seminar and was able to play one Friday afternoon. **Connie Robertson**, who came to visit her daughter for a month, wanted to play in day games as much as possible—and did! **Bob Brahm** also came on business and wants to play in evening games when he can.

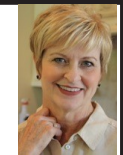
We had one 70% game on August 8th by **Deborah Brookins** and **Mike Schlueter**. They scored 73.13%.

We congratulate **Mike Robinson**, who earned his last bit of gold and became a Life Master. The Odessa unit threw him a party.

Beginning bridge lessons started again on September 7.

We hope to have a more exciting fall season!

**Unit 353
Wichita Falls**
Carolyn Bell



As I write this we are welcoming cooler temperatures to North Texas. The change of weather helps each of us to take a deep breath and relax, to let go of some of the heated stress of Summer. We are enjoying pumpkins, the break from mowing lawns, and changing colors in our world. We look forward to times to gather with families and friends at meals and seasonal celebrations.

The transitions we see in our world remind me of our own changes of life and circumstances. I see a wonderful resilience, an ability to flow with the change, in the lives of my bridge friends. The majority are people of faith, of fortitude with a determination to overcome their challenges, and move forward. I admire them, and they are wonderful examples for me. The ability to navigate through change is an important quality to have as you move through life. Wisdom is gained for sure but you also need to have a mindset that you are going to continue to be of value and have purpose. The decision that you make to get up out of bed, to dress, to have somewhere to go, and that others are looking forward to seeing you can be of tremendous value. We need to be in community with one another. We need to have fellowship. We gain strength through purpose.

So many of our bridge friends have experienced health issues. We miss them when they are in recovery, have family health issues to deal with, or are no longer able to come play a game of bridge with us. Please know that you are missed, that we value the times we have spent together, and that we care about you - **Bernie Lange**, **Rosemary Barrington**, **Wanda Gaynor**, **Joyce Lo**, **Tuck Harvey**, **Pat Robinson**, **Tomie Johnson**, **Lois Robinson**. We are glad that **Helen Cash** is back safely from her trip to Israel and her special project that she is a part of there.

I also want to recommend a new book called *Winning Bridge Tips for New Players, Beginners, and Intermediate Players* written by **Stephen Page**. While our club has many players who are Life Masters we welcome anyone who is trying to learn the game of Duplicate. I can tell you it is not easy to compete successfully with people who have played for 40+ years. Our club has new players who are trying to transition from party bridge to duplicate, and they need a book like this one that has such simple and easy to understand information about how to bid and play a hand. While every hand you play will be different there are basic conventions and guidelines that will help you become successful at the game. In our own bridge club we congratulate **Dee McKinley** who recently achieved her Ruby Life Master! What a wonderful accomplishment!

The Unit Game Winners for August 11 were **Dave Hertzog** and **Tomie Johnson** with a score of 73.81%; **Ray Duncan** and **Mary Knox** with a score of 65.18%. The Unit Game Winners for August 25 were **Kathleen Brown** and **Margaret Kirkland** with a score of 69.58%; **Wanda Hughes** and **Bennie Young** with a score of 64.58%.

The North American Pairs Black and Red Point Leaders for August were **Patty Hofer** and **Judy Lucas** with 1.59 black and 1.60 red; **Wanda Hughes** and **Bennie Young** with 1.50 Black and 1.50 red; **Anne Halsell** and **Margaret Kirkland** with 1.19 black and 1.20 red; **Dave Hertzog** and **Tomie Johnson** with 1.12 black and 1.13 red;

Kathleen Brown and **Wanda Hughes** with .89 black and .90 red.

The Club Charity Championship Winner Leaders were **Gladys Barley** and **Trudy Downey** with 2.04 black; **Kathleen Brown** and **Betsy Smith** with 1.53 black; **Robert Phillips** and **Leon Vaccarella** with 1.15 black.

The Bridge Club Masterpoint Leaders for August were **David Hertzog** and **Tomie Johnson** with 1.85 masterpoints each; **Margaret Kirkland** with 1.79 masterpoints; **Anne Halsell** with 1.73 masterpoints, **Wanda Hughes** with 1.66 masterpoints. High percentage games for August were **Clay Abrams** and **Margaret Kirkland** with a score of 70.83%; **Kathleen Brown** and **Anne Halsell** with a score of 70.83%; **Anne Halsell** and **Nancy Purcell** with a score of 69.44%; **Martha Keller** and **Marsha May** with a score of 66.67%; **Anne Halsell** and **Dee McKinley** with a score of 65.63%.

The North American Pairs Black and Red Point Leaders for August were **Kathleen Brown** and **Anne Halsell** with 1.59 black and 1.60 red; **Clay Abrams** and **Margaret Kirkland** with 1.19 black and 1.20 red; **Gladys Barley** and **Nancy Purcell** with 0.89 black and 0.89 red; **Wanda Hughes** and **Dee McKinley** with 0.67 black and 0.68 red; **Marie Donnell** and **Shirley Donnell** with 0.50 black and 0.51 red.

The Suite 16 Masterpoint Leaders for August were **Anne Halsell** with 5.70 masterpoints; **Kathleen Brown** with 5.52 masterpoints; **Margaret Kirkland** with 4.66 masterpoints; and **Dee McKinley** with 3.82 masterpoints. High percentage games for August were **Anne Halsell** and **Margaret Kirkland** with a score of 68.75%; **Kathleen Brown** and **Wanda Hughes** with a score of 63.39%; **Margaret Kirkland** and **Dee McKinley** with a score of 63.33%; **Judy Lucas** and **Patty Hofer** with a score of 62.50%; **Dave Hertzog** and **Tomie Johnson** with a score of 61.81%.

The Unit Game Winners for September 8 were **Anne Halsell** and **Nancy Purcell** with a score of 66.67%; **Rose Van Meter** and **Patty Hofer** with a score of 63.20%; **Wanda Hughes** and **Dee McKinley** with a score of 58.04%.

The Bridge Club ACBL Membership Black Point Leaders for September were **Anne Halsell** and **Margaret Kirkland** with 3.19 black; **Martha Keller** and **Marsha May** with 2.81 black; **Dave Hertzog** and **Tomie Johnson** with 2.39 black; **Wanda Hughes** and **Bennie Young** with 2.11 black; and **Kathleen Brown** and **Wanda Hughes** with 1.79 black.

The Bridge Club Masterpoint Leaders for September were **Dave Hertzog** and **Tomie Johnson** with 5.78 masterpoints; **Margaret Kirkland** with 5.67 masterpoints; **Anne Halsell** with 3.93 masterpoints; **Dee McKinley** with 3.71 masterpoints; **Martha Keller** and **Marsha May** with 3.01 masterpoints. High Percentage Games for Septem-

ber were **Anne Halsell** and **Margaret Kirkland** with a score of 71.18%; **Anne Halsell** and **Margaret Kirkland** with a score of 70.41%; **Dave Hertzog** and **Tomie Johnson** with a score of 69.80%; **Anne Halsell** and **Margaret Kirkland** with a score of 66.96%; and **Anne Halsell** and **Margaret Kirkland** with a score of 65.75%.

The Suite 16 Masterpoint Leaders for September were **Anne Halsell** with 6.26 masterpoints; **Kathleen Brown** with 3.96 masterpoints; **Nancy Purcell** with 3.49 masterpoints; **Gladys Barley** with 3.42 masterpoints; and **Wanda Hughes** with 2.93 masterpoints.

The Club ACBL Membership Black Point Leaders for September were **Gladys Barley**, **Judy Lucas**, **Faye Morrison**, and **Nancy Purcell** with 2.46 black points; **Wanda Hughes** and **Dee McKinley** with 1.58 black points. High Percentage Games for September were **Ben Kirkland** and **Margaret Kirkland** with a score of 70.00%; **Wanda Hughes** and **Kathleen Brown** with a score of 64.81%; **Anne Halsell** and **Nancy Purcell** with a score of 64.58%; **Kathleen Brown** and **Anne Halsell** with a score of 64.58%.

**Unit 233
Central Texas**
Mary Adams



Our Unit 233 Board held its regular meeting in August at the Sul Ross Bridge Club in Waco. Among other things, they solidified the new nominees for the Board: **Pat Curry** and **Sue Blackwell** from Waco and **Amy Wilson** and **Jeanette Parsons** from Temple. Rotating off the board will be **Pat Johnson**, **Pat Kelly**, and **Carol Ann Wadley** (who served two terms as our President.) Be sure to show your gratitude to these friends of ours! The election, as well as the beginning of the new term, will be Sunday, December 8 at the annual Unit Christmas Party at the Cultural Activities Center in Temple. There will be two sessions of bridge starting at 10 AM with a catered lunch in between. People may choose to play both sessions or just one. Please note that the initial date for the party was December 1, but the date has been changed because of a scheduling conflict at the CAC.

One of the most important items at the August board meeting involved when, where, and if the two unit tournaments we have each year should be continued. Because of the many other tournaments being held in District 16, recurring conflicts, and the relatively smaller numbers for Unit 233 tournaments, it is suggested that we have only one a year either in Waco or Temple--preferably at the February date. Please, please talk to your Board members and your club managers to discuss the alternatives and to let your opinion be known.

We are saddened by the death of **Juanita Butler**. She had been in declining health for a while, but she stayed involved until just a few weeks ago. Her devoted husband, **Roy**, helped make it possible for her to play bridge almost until the end. I will always remember seeing **Roy** helping her out of the car, carrying her oxygen supply, and tending to every need she had--from getting food to adjusting her oxygen. **Juanita** was President of our unit and several committees. She began playing in our unit with her wonderful son **David** until his death. His coping with so many health issues was an inspiration to us all. I recall all of their "special" conventions (always alerted!!!) that were entirely new to me! That's not saying a lot since I am not known for my sophistication in bidding!!! Later in life, we all dubbed certain bids "Juanita Bids" because she was infamous for not letting her opponents have the bid at game level! In other words, if you bid 4 spades---count on **Juanita** to bid 5 hearts! Besides **David** and **Roy**, she was a frequent and successful partner of **Asa Waterman**.

Stephen Olson, our great friend and Temple Duplicate Club Director, is in a rehab facility in Lampasas for over a month to fight an infection. We are sad and miss him! In the meantime, **Belva Barrington** is the interim director. Until later notice, the game has been moved to The Bridge Studio. We will be thinking of you, **Steve**, and sending all good vibes your way. You have many more slams and great defense strategies to bring our way.

So many of you have told me that you no longer are able to read the Scorecard because it is on line rather than in hard copy. If you like, ask your club manager to let me know, and I will forward to them hard copies of my column. That decision, however, does not include all of the Scorecard articles and announcements---and pictures!!! Speaking of pictures, at my request, **Bill Parrish** sent me the pictures of club members "adorning" (yes!!!) the walls at Sul Ross. I would love to share them with you if you will let me know. I do not think I can include them in my text. (policy---not my inadequacies!!! hmmm,..) I will let you know.

Another change in our local ACBL world is the access to the club scores. As of January 1, 2020, ACBL Live will be the only access for players who want to see the local club results. So that we can get used to the new access system, **Gene Thompson** has already made the transition for The Bridge Studio and Rolling Hills Bridge Club. Go to the ACBL Unit 233 web site and click on the particular club icon at the top of the page. One benefit will be that we can register and receive the scores via email and/or text without having to look up the scores on our own.

Big games recently include **Ethel** and **Tom Corlett** (70%) at Sul Ross, **Wanda Carter** and **Ann Fulcher** (70%) along with **Lennie Wilkins** and **Mary Adams** (76%) at The Bridge Studio.



Unit 225
East Texas
Susan Ford

70% Paula Edwards & Diane Dunn -
- 71.23% at Rose City DBC on 7/15

Mike Graham & E.T. Testerman --
70% at LDBC on 7/22

Karen Schmidt & Jayme DeHaan --
75% at Sheila Bell DBC on 8/7 (This
score was posted in the Texarkana
Newbie section!)

Carol Sossamon and Patsy Gordon
had a 72.62% Gun Barrel 8/12

Charles Ford and Ginger Rhamey --
70.43% Dottie Pirkle DBC

Pat Westbrook and Susan Ford -- 75%
game 8/13 Dottie Pirkle DBC
Peggy Wright & Gay Roach 78.13%
8/19 Nacogdoches Duplicate Club

Larry Brough & Ed Loutharback --
72.5% at Pittsburg on 8/20

Bonnie Magee & Jimmy Wright -
70.6% 8/30 Gun Barrel DBC
Shirley Shelton and Jim Dick had a
71.76% -t Rose City DBC 9/6

Jeanie Nutter and Sarah Meredith
71.72% 9/8 Tall Tree
Carol Garza and Jean Roach 70.83%
9/9 Gun Barrel DBC

Heather & Charles Sanders -- 70.14%
9/10 Pittsburg DBC
Bonnie Magee & Gloria Rowland
70.31. 9/18 Gun Barrel DBC
Nancy Green & Dick Hinkle - 75%
9/30 Rose City DBC

Rose City DBC

August Club Masterpoint Race

1st. Mary Bartley
2nd. Nancy Green
3rd. S V Ramarathnam

Non-Lifemasters

1st. Pud Patterson
2nd. Pat Wright
3rd. Don Gill

September MASTERPOINT Race

1st. Nancy Green
2nd. Cliff Dillard
3rd. Mary Bartley

Non Lifemasters

1st. Pud Patterson
2nd. Pat Wright
3rd. Susan Sensenbach

Rose City DBC helped Karlene Hall
celebrate her 91st birthday.

Bridge Studio at Gun Barrel

In Memoriam

Barbara Williams passed away on
Aug. 20th at the home of her daughter
in Eustace after a brief illness. She
was our director in Gun Barrel for
over 10 years and a dear friend to so
many. Barbara loved directing, but
did get to play with her partners Jo
Booth and Rachel Lee when she got a
chance. She loved going to tourna-
ments and had attained the Silver Life
Master rank. We will truly miss her.

Doris Neathery's 100th Birthday

Thirty-one years ago, with Steve
Lawrence's encouragement, Doris
Neathery became a director and start-
ed her 21 year career with the Mid-
Cities Duplicate Bridge Club. The
club met in St. Jude's Catholic
Church until moving to The Bridge
Studio at Cedar Creek in 2003. She
ran the Monday and Wednesday
morning games until she retired in
October 2009 at age 90. She continues
to play bridge with her partner Ray
Carden.

On 8/11, Doris turned 100 and the
next day her bridge friends gathered
to wish her a Happy Birthday with a
potluck lunch and a basketful of birth-
day cards.

Gloria Rowland presented Doris with
a framed Golden Age Master award
from ACBL and a letter from Presi-
dent Russ Jones wishing her a happy
100th birthday and acknowledging
her contributions to the bridge world.
The food was delicious and plentiful
and Doris enjoyed visiting with her
many friends, some from the old St.
Jude days.

In addition, Cedar Creek recently
celebrated Gloria Rowland's birthday.
According to Gloria, "I'm not old, I've

just been young for a long time."

Barbara Bradford & Jo Booth passed
the Director's Exam this summer. We
are so glad! We can't play this won-
derful game of duplicate bridge with-
out directors!

Sandy & Dale Molander are now
settled in their new home in a suburb
north of Atlanta. They have started
playing bridge and Dale has joined
the local Rotary Club, so they are set!

Sheila Bell DBC (Texarkana)

The Club held a celebration and fare-
well party in honor of Betty Abston, a
charter club member, on Mon., July
29. Betty is moving to Frisco, TX, to
be near family but is not giving up her
bridge game!

"We send Betty off with best wishes
and a fond farewell as she moves and
starts a new chapter in her life," re-
ported Lisa Looney.

The club also recently celebrated Fred
Borum's birthday but no one reported
on his age. Happy Birthday Fred!

CONGRATULATIONS to Sarah
Meredith (SBDBC) - New Life Mas-
ter!!!

Sarah Meredith (SBDBC) attained the
rank of Life Master on September 20,
2019 at a tournament in Tunica MS.

A joint Life Master party will be held
for her and Cliff Smith at the Sheila
Bell Duplicate Bridge Club on
Wednesday, October 20 at 11:30 a.m.
Lunch will be served before the award
presentation with a game to follow at
12:15

Curtis Bourland received the rank of
Bronze Life Master on July 1, 2019

Jeff Brown and Julia Mobley swept
the winner category at the Shreveport
Top of the Boot Tournament on Au-
gust 15 and 16.

I am so excited about all of our new
players in Texarkana! The Beginner
classes Lisa Looney has been teaching
have brought in a lot of newbies. In
fact, we have so many that we have
been able to start a new Novice (0-20
points) game on Wednesdays in addi-
tion to our regular game at 12:15 p.m.
We run both games at the same time.

Longview DBC

Shirley Shelton GOLD Life Master
8/12

Longview DBC is holding a celebra-
tory luncheon/game honoring
Cliff Smith, who attained the rank of
Life Master at the Labor Day
Regional in Dallas on Thursday,
September 26 at 11:30 am at the
studio

Thirty four players gathered on Satur-
day, August 24 to pay tribute to Terry
Slater, LDBC member, who passed
away recently. This beautiful plaque
was unveiled and hung near the entry-
way of the studio. A delicious lunch
was enjoyed by all and memories of
Terry were shared.

Dottie Pirkle DBC

Congratulations to Nell Velvin on
attaining the rank of GOLD

Life Master. Nell was given a GOLD
party to celebrate her accomplish-
ment. Tables had gold placemats, gold
plates, gold silverware and gold glass-
es. There were lots of finger foods
and desserts. Nell gave a nice talk
sharing her journey in bridge naming
several of her partners. She also re-
minded everyone that it is a game and
it is more important to be nice and
encouraging to one another. People
are more important than a game.

Unit 225 News from President Har-
rison

A BIG THANKS to everyone who
attended the Unit 225 General Busi-
ness Meeting on August 10th!

Unit 225's Board of Directors, effec-
tive Aug. 10 are:

- Linda Harrison, President
- Janie Wolaver, Vice President
- Tom Spradlin, Secretary
- Sandra O'Bannon, Treasurer
- Carol Kinsey, Webmaster
- Jo Ann Zastovnik, Hospitality Chair
- Phyllis Alvarez, Recorder & Sun-
shine Chair
- Susan Ford, Scorecard & Publicity
Chair
- S. V. Ramarathnam, Awards Chair

- John Hamilton
- Jo Ellen Wade, Unit Sanction Chair
- Mary Ramsey

I appreciate each board member's
willingness to serve as volunteers.
Each board member brings work/life
experiences with unique skill sets.
They generously give of their time,
effort, ideas, contributions and team-
work. The Board welcomes our mem-
bership's suggestions and feedback.
The Unit Bylaws, Monthly Minutes,
and Financial Reports are available on
Unit 225's website. A big thank you
to Unit 225 Webmaster, Carol Kinsey
for keeping the website updated with
current Unit news at: [http://
acblunit225.com](http://acblunit225.com)

Unit 225's NAP Qualifying Game
was held Sat, Oct 5th. Eleven tables
were signed to play at the two-session
game, starting at 9:30AM with lunch
included. Those participating had
played in NAP local club game in
June, July or August. A fun day of
bridge with lots of extra points to the
winners!

Pittsburg 500NLM, Oct 31, Nov
1&2 ,American Legion Bldg, 525 Elm
St, Pittsburg, TX- Second annual
Pittsburg NLM Sectional. Great fun
for players to win silver points and
enjoy the small town and East Texas
hospitality!

Unit 225 will host a Christmas
Awards luncheon on December 14,
recognizing all players who have
advance in the Life Masters ranks.

Linda Harrison is providing free
learning table lessons for novice play-
ers.

ACBL Wide Instant Match Point
game July 8th-Dotsy Miller and Jack-
ie McElhaney had a 67.24 percent.
They came in first in District 16 and
got 10 extra red points

Cliff Smith attained his Life Master
playing at the Richardson Tournament
on Sept 27th. He was playing on a
Swiss Team with his wife, Kathy
Smith, Susan Flick and his College
Classmate, Clint Pruet. Cliff plays at
many nearby club including
Longview and Texarkana and has lots
of bridge and partners. PDBC and
LCS clubs hosted a Life Master party
for Cliff on Sunday, October 6th at
the Tall Tree Club house with 9 tables
of his friends cheering him on!

Unit 225 Awards -- Congratulations
to the following Unit 225 award win-
ners

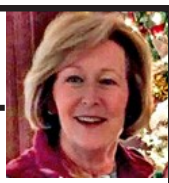
The Ben Friend Award to Mary and
Don Bartley

The Emily Leake Award to Jo Ann
Zastovnik

The TOS Steve Lawrence Award to
Mike Graham

The Tournament of Roses Award to
Stewart Angel & Jonathan Ernst

Unit 197
Lubbock



Anita Woodard

Many thanks to Anita Woodard who
filled in for Sandi. Kraemer

Sue Myers has done a wonderful job
as club manager. We are all so grate-
ful to her. Also, Gwen Wright has
been a great president. She and Jane
Giddens have worked very hard to
keep our Sunday Unit game going
Phyllis Kinnison has taken on the job
of updating our directory. Ken
Woodard provided his notes for mrm-
bers to make corrections. Ken does
continue as Webmaster. We are so
glad to have so many volunteers

We are saddened by the death of long
time member, Margaret Rambo who
passed October 14, 2019. Margaret
and her husband Carl, had been mem-
bers of Unit 197 over thirty years.
We will miss you, Margaret.

Our condolences to the family of
Grant LaFleur upon the death of his
granddaughter, Jessica Ruth Richard-
son.

This is my last Scorecard Article and I
want to thank Ira and
Ellen Hessel for the time and effort
they put into each edition. Scorecard
is a major undertaking .



**Palmview
Sectional**
Nov 29-Dec 1



2019 Las Palmas Community Center
1921 N. 25th & E. Sycamore
McAllen, TX 78501
(956) 681-3350

Friday 29th

9:30 am & 1:45 pm
Reindeer A/X Pairs
A 2000+ X 0 - 2000
Nutcracker NLM Pairs
B 300 - 750 C 150 -299 D 0 - 149
\$11.00 player per session

Saturday 30th

Toyland Open Pairs
9:30 am & 1:45 pm
Single Sessions
\$11.00 player per session

Sunday 1st

Santa's Swiss Team
10:00 am and TBA
\$25.00 per team member
Meal included

All Events are Stratified (Average of both players)
A 2000+ B 750-2000 C 0-750
Beverages and Snacks available during sessions

Tournament Chair: Rene Wallace (956) 454-1016
Partnership Chair: Dave Ochs (956) 782 - 0160

Join us for Holiday fun in the Rio Grande Valley

*(\$4.00 extra per session for non-ACBL Members and
Unpaid Members)*



**Magic Valley
Sectional**



January 24-26, 2020
Elks Lodge 1889

1426 S Commerce Street
Harlingen, Tx 78550
(956) 423-4290

Friday 24th

Jim Bagley Pairs 9:30 am & 1:45 pm
\$11.00 player per session
A 2000+ B 750-2000 C 0-750
Laverne Hill A/X Pairs

Saturday 25th

9:30 am & 1:45 pm Single Sessions
A - 2000 + X - 0 - 2000
Herman Westbrook - NLM Pairs
B 300 - 599 C 150 - 299D 0 - 149
\$11.00 player per session

Sunday 26th

Doris Allen Swiss Teams
10:00 am and TBA
\$25.00 per team member includes lunch
Beverages and Snacks available during sessions
Join us In the Magic Valley

Tournament Chair:

Johnny Johnson (956) 264-4321
johnson.financial@att.net

Partnership Chair:

Linda Dick (540) 851-2262 lkd9000@twc.com
ACBL Sanction Number #2001329

*(\$4.00 extra per session for non-ACBL
Members and Unpaid Members)*



Lone Star Regional

February 3-9, 2020



MONDAY, FEBRUARY 3

Charity Fund Pairs (Single sessions)	1:00 & 6:30
Gold Rush Pairs (Double session)	1:00 & 6:30
299er Pairs (Single sessions)	1:00 & 6:30
0-5 and 49er Pairs (Single sessions)	1:00 & 6:30
Bracketed Swiss Teams	1:00 & 6:30

TUESDAY, FEBRUARY 4

A/X Pairs (Double session)	10:00 & 2:30
Mid-flight Pairs (Double session)	10:00 & 2:30
Gold Rush Pairs (Double session)	10:00 & 2:30
Morning Side Pair Series	10:00
0-5, 49er & 299er Pairs (Single sessions)	10:00 & 2:30
Bracketed Swiss Teams *	10:00 & 2:30
Mini-Soloway (Session 1 and 2)*	10:00 & 2:30
Afternoon Side Pair Series	2:30
Tues/Wed Handicapped Swiss (Session 1 of 2)	7:00
Evening Side Pair Series	7:00

WEDNESDAY, FEBRUARY 5

A/X/Y Pairs (Double session)	10:00 & 2:30
Gold Rush Pairs (Double session)	10:00 & 2:30
Morning Side Pair Series	10:00
0-5, 49er & 299er Pairs (Single sessions)	10:00 & 2:30
Bracketed Swiss Teams	10:00 & 2:30
Mini-Soloway (Session 3 and 4)	10:00 & 2:30
Afternoon Side Pair Series	2:30
Tue/Wed Handicapped Swiss (Session 2 of 2)	7:00
Evening Side Pair Series	7:00

THURSDAY, FEBRUARY 6

A/X Pairs (Double session)	10:00 & 2:30
Mid-flight Pairs (Double session)	10:00 & 2:30
Gold Rush Pairs (Double session)	10:00 & 2:30
Morning Side Pair Series	10:00
0-5, 49er & 299er Pairs (Single sessions)	10:00 & 2:30
Bracketed Swiss Teams*	10:00 & 2:30
Mini-Soloway (Session 1 and 2)*	10:00 & 2:30
Afternoon Side Pair Series	2:30
Thur/Fri Handicapped Swiss (Session 1 of 2)	7:00
Evening Side Pair Series	7:00

All Swiss Team Games are Double Session

* 2-day Mini-Soloway starts for Top Bracket Equivalent
(Conditions of Contest, see online flyer, page 3)

DAILY START TIMES

Monday	1:00 & 6:30
Tuesday - Friday	10:00 & 2:30 & 7:00
Saturday	10:00 & 2:30 & 8:30
Sunday	9:30 AM & TBD

FRIDAY, FEBRUARY 7

A/X/Y Pairs (Double session)	10:00 & 2:30
Gold Rush Pairs (Double session)	10:00 & 2:30
Morning Side Pair Series	10:00
0-5, 49er & 299er Pairs (Single sessions)	10:00 & 2:30
Bracketed Swiss Teams	10:00 & 2:30
Mini-Soloway (Session 3 and 4)	10:00 & 2:30
Afternoon Side Pair Series	2:30
Thurs/Fri Handicapped Swiss (Session 2 of 2)	7:00
Evening Side Pair Series	7:00

SATURDAY, FEBRUARY 8

A/X Pairs (Double session)	10:00 & 2:30
Mid-flight Pairs (Double session)	10:00 & 2:30
Gold Rush Pairs (Double session)	10:00 & 2:30
Morning Side Pair Series	10:00
0-5, 49er & 299er Pairs (Single sessions)	10:00 & 2:30
Bracketed Swiss Teams	10:00 & 2:30
Afternoon Side Pair Series	2:30
Evening "Zip" Knock-Out (\$5/person)	8:30

SUNDAY, FEBRUARY 9

A/X/Y Pairs (Double session)	9:30 & TBA
Side Pairs (Single sessions)	9:30 & TBA
A/X Swiss Teams	9:30 & TBA
Bracketed Swiss Teams	9:30 & TBA

(No Player with > 3000 MPs)

All Swiss Team Games are Double Session

STRATIFICATION & FLIGHTING

Stratified Events	A: 3000+, B: 750-3000, C: 0-750
A/X Pairs (A&X play together)	A: 5000+, X: 0-5000
Midflight Pairs (B&Y play together)	B: 1500-3000, Y: 0-1500
Gold Rush Pairs (C&Z play together)	C: 300-750, Z: 0-300
A/X/Y Pairs	A: 5000+, X: 2000-5000, Y: 0-2000

299er	A: 200-300, B: 100-200, C: 0-100
49er	A: 20-50, B: 5-20, C: 0-5

Strats may vary at the director's discretion

Bracketed Swiss	brackets of 7-9 teams by average MP
A/X Swiss (A&X play together)	A: 4000+, X: 0-4000
Sunday Bracketed Swiss	B: 0-3000

(No player over 3000 MPs)

For the 2-day Mini-Soloway Conditions of Contest,
see online flyer, page 3

Evening Swiss games will be handicapped

Team or pair average used for all stratified events
and within flights for strati-flighted events.

Houston Unit 174 proudly presents the 59th annual

Lone Star Regional

February 3-9, 2020**TOURNAMENT CHAIRS**Lauri Laufman
281-235-8777
llaufman@texas2211.comJack LaVigne
281-382-3002
jacklavigne@att.net**PARTNERSHIPS**Ken Hudson
281-488-1781
Partnership.LSR@gmail.com*For partnerships in advance of
the tournament, please use
www.acbl.org/partnershipdesk***HOSPITALITY**

Sam Khayatt - sck0057@gmail.com

INTERMEDIATE/NEWCOMER

Cindy Cox - bridgecindy5@gmail.com

INTERMEDIATE/NEWCOMER SCHEDULE0-5, 49er, & 299er pairs Monday @ 1:00 & 6:30
Tuesday-Saturday @ 10:00 & 2:30Session and overall awards will be **red** points.

The I/N player amassing the most points will be awarded a special trophy between sessions on Sunday.

**0-750 "GOLD" OPPORTUNITIES!****Daily Bracketed Swiss Events**Top three teams in each Bracket win **Gold!****Gold Rush Pairs**

Monday: 1:00 & 6:30 Tuesday-Saturday: 10:00 & 2:30

**LSR AFTERNOON SPEAKERS**

Mon at Noon, Tues-Sat at 2:00 PM

**SATURDAY NIGHT MOVIE & ZIP KO**7:00 pm— "Aces and Knaves"
- Free -8:30 pm—"Zip" Knock Out
- \$5 per person -**DIRECTOR'S REFRESHER CLASS**Sunday, February 2nd, 10:00-4:00pm
\$15 advance/\$20 at door

For information or to register:

Lauri Laufman - llaufman@texas2211.com

MARRIOTT HOUSTON WESTCHASE

2900 Briar Park Drive, Houston, TX 77042

Reservations: 713-978-7400, 1-888-236-2427

Room Rate: \$119 Booking Code: [LSR2020](#)

Cut-off date: January 24, 2020

DAILY OPEN PAIR GAMES

Monday	Charity Fund Pairs	1 & 6:30
Tuesday	A/X & Midflight Pairs (2 sessions)	10 & 2:30
Wednesday	A/X/Y Pairs (2 sessions)	10 & 2:30
Thursday	A/X & Midflight Pairs (2 sessions)	10 & 2:30
Friday	A/X/Y Pairs (2 sessions)	10 & 2:30
Saturday	A/X & Midflight Pairs (2 sessions)	10 & 2:30
Sunday	A/X/Y Pairs (2 sessions)	9:30 & TBA

THREE SIDE PAIR GAME SERIES*Your best two games count toward the overalls*

Morning Series	Tuesday-Saturday	10:00
Afternoon Series	Tuesday-Saturday	2:30
Evening Series	Tuesday-Friday	7:00

DAILY BRACKETED SWISS TEAM GAMES*All are two sessions!*

Monday	1:00 & 6:30
Tuesday-Saturday	10:00 & 2:30
Sunday	9:30 & TBA

TWO EVENING HANDICAPPED SWISS

Tuesday & Wednesday Evening	7:00
Thursday & Friday Evening	7:00

SUNDAY A/X SWISS

Sunday	9:30 & TBA
--------------	------------

TWO MINI-SOLOWAY KO OPPORTUNITIES*For top bracket equivalent (in lieu of above) 2-day 4-session team event*

Tues/Wed & Thurs/Fri	10:00 & 2:30
----------------------------	--------------

*Conditions of Contest, see online flyer (page 3)***ENTRY FEES**

Monday through Friday	\$14
Saturday (\$1 for Austin 2021 NABC)	\$15
Sunday (includes lunch voucher)	\$16

*\$4 more for unpaid ACBL members***AWARDS**

Provided to Section Tops in Pairs Games and to First Place in Team Events at Awards Desk