

American Contract Bridge League District 16 SCORECARD

Bridge News Bulletin for The Texas Regional Conference

San Antonio, Texas

Volume 50 No 2

March/April 2018

DISTRICT 16 NORTH AMERICAN PAIRS CHAMPIONS



Flight A 1st Place
Joan Jackson, Peggy Sutherlin



Flight A 2nd Place
Barry Schaffer, Mark Bumgardner



Flight A 3rd Place
Phillip Grothus, Mildred Breed



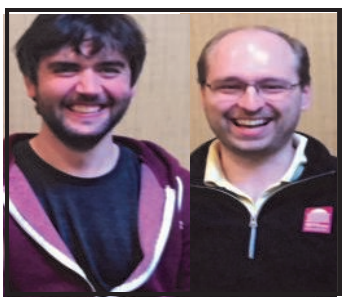
Flight B 1st Place
Jeff Dater, Scott Nason



Flight B 2nd Place
Jerry Barrett, Sharon Dameron



Flight B 3rd Place
Bogumil Knypinski, Pawel Hanus



Flight B
4th Place
Jared Langer, Shawn Drenning



Flight C 1st Place
Jim Nixon, Ross Ramsey



Flight C
2nd Place
Janina Kuzma, Leigh Primerano



Flight C
3rd Place
Jan & Chuck Mogged

In January 107 pairs competed in Austin, for the honor of representing D16 in the National NAP finals in Kansas City during the Spring Nationals in March. There were 30 pairs in A, 50 pairs in B, and 27 pairs in C. The total has been relatively steady for the last decade, proving to be a major event on the District schedule.

Four pairs in each flight qualified to compete in the Spring NABC in Philadelphia. The also receive subsidies from the ACBL that is augmented by District 16. All entries are paid by the ACBL at the national site.

Flight A: 1st \$800 2nd \$500 3rd \$300 4th \$200
Flight B: 1st \$800 2nd \$800 3rd \$500 4th \$300
Flight C: 1st \$800 2nd \$500 3rd \$300 4th \$200

The event is a 4-part sequence that began at qualifying club games and proceeded to a 2-session Unit final. Players then advanced to the District final, where all flights played 4 sessions, 2 qualifying and 2 finals. After

the final results were tallied the national qualifiers were:

Flight A

- 1 Joan Jackson - Peggy Sutherlin
- 2 Mildred Breed, ; Phillip Grothus,
- 3 John Zilic - Dan Morse
- 4 Barry Schaffer - Mark Bumgardner

Flight B

- 1 Scott Nason - Jeff Dater
- 2 Jerry Barrett- Sharon Dameron
- 3 Bogumil Knypinski =Pawel Hanus,
- 4 Shawn Drenning - Jarek Langer

Flight C

- 1 Ross Ramsey - Jim Nixon Mound
- 2 Janina Kuzma- Leigh Primerano
- 3 Jan Mogged - Charles Mogged Jr,
- 4 Adrienne Juno- Carol McCord

Joan and Peggy were 2nd in 2014 and are both world champions. They were teammates on the 2000 winners of the women's world Olympiad in Maas-tricht, Netherlands. Also on that team were Mildred Breed, runner up in this years NAPS , and Petra Hamman who just missed qualifying this year.

Jerry and Sharon, 2nd in this year's B

flight, were 3rd and 4th last year in Flight C with different partners.

The top flight draws a very strong field and is easily stronger than any other pair event at regionals or sectionals.

Players really seem to enjoy the NAPS and GNT. There is a high level of enthusiasm in both. The GNT will be Houston in May. It is another great event that the District generously supports.

This year there were scoring problems in the A flight so it was almost a week before the placings were clear. The district decided to qualify a 5th pair in A, Greg Resz and the Jeff McKee.

From a personal standpoint I can tell you that bot the National and district finals are special. Competitions is keen, players friendly and almost no director calls.

Rebecca Brown

District 16 President



After eight years of writing a column for Unit 172 (San Antonio), I have the privilege of writing this column as the President of District 16. Five years ago, I joined the Board as Executive Secretary. I have served as Secretary, then Vice President, to four Presidents and have learned from each one. I hope to continue in their strong tradition. What a wonderful opportunity I have enjoyed being among a group of smart, caring people. I congratulate the other new (actually, new-ish) officers of your Board: Nancy Strohmer, 1st Vice President; David Pearlman, 2nd Vice President; Tomi Storey, Executive Secretary; and, Dan Leightman, Executive Treasurer. Modesty aside, we will make a good team on your behalf.

There are many issues that arise and are dealt with at and between meetings, generally reflected in the minutes of the following board meeting. Those minutes are posted on the District 16 website for your review. I will use this column to highlight some of the actions/issues with which we deal. In the meantime, I would welcome your input and suggestions; please email me at rebecca.brown@att.net. Immediate past President, Tomi Storey, has been noted for her accessibility; I want to follow her great example!

For recent news: First, the Lone Star Regional had 3046 tables—a great success! —ensuring our District the extra regional through 2021. We

may offer up to five regionals in Texas plus two in Mexico. Second, after much discussion, the Board decided to retain the distribution of the print version of the Scorecard to all Units; we will evaluate a different mailing process in an effort to reduce postage costs. When implemented, participating clubs will be sent adequate copies of the Scorecard for distribution to players; players will not be mailed copies to their homes, but will be expected to pick up their copies while at their favorite club. Unfortunately, this may not be convenient for some. We will also send out a “blast” email with a link to the digital version of the Scorecard. The Board will continue to monitor the process and respond as indicated. Please provide feedback to your Unit representative. Third, the District is following the ACBL's lead in an effort to increase youth membership. There is an active program to recruit coaches for college teams. The coaches need not be bridge players, just good advocates. There is a small stipend available and there are plenty of resources online. Let your Unit representative know if you or someone you know would like to serve as a college team coach.

The District needs your help! If you would like to serve on a committee, please let me know. We would like to engage your talent and a bit of your time. I have been very enriched by my five years as a Board member. I encourage each of you to get involved.

I am honored to serve the bridge community. I depend on you to help me keep the District “ship” headed in the right direction!

Paul Cuneo

District 16 National BOD



The Board has been actively preparing for our Philadelphia meeting. This year, I'm chairing the Strategic Review and Honorary Member committees. My other committee assignments are Governance and Finance. I'm co-sponsoring two motions for the meeting:
1/ Increasing the Gold Point awards in NLM (Non-Life Master) regionals from 25% to 33% of the awards in open regionals.
2/ Allowing Open Sectionals to count the NLM regional tables for masterpoint award purposes when the two are concurrent events. These motions will affect Austin's

upcoming tournaments in May if approved.

The Strategic Review Committee is leading an effort to update the Strategic Plan. The last major revision was in 2012, so we feel that it is time. The current strategic priorities are membership growth and volunteer support and we expect those will continue and expect to surface some additional topics for emphasis. A lot of work in the technology area continues and rollouts of scoring programs, Customer Relationship Management, and financial system are underway and expected to be completed in 2018.

ACBL is conducting an experiment this year of accepting credit cards at

Cont on page 2 Paul

AMERICAN CONTRACT BRIDGE LEAGUE

DISTRICT 16
SCORECARD

Bridge News Bulletin for
The Texas Regional Conference
10710 Tybalt Trail
San Antonio, TX 78213

**Grand
National Teams**
Please see page 3
For Revised
Schedule



Rebecca Brown
President

**2018
District
Officers**



Nancy Strohmer
1st Vice-President



Dan Leightman
Executive Treasurer



Tomi Storey
Executive Secretary



David Pearlman
2nd Vice-President

Unit	Column	Announcement	Results	Pictures
172 San Antonio	6	6	6	6-7
174 Houston	7	8, 8	7.9.10	10-12
176 Dallas	12	12	12-3	13
183 Fort Western	14		14-	15
187 Corpus Christi	15		15	15
197 Lubbock	15			
201 Beaumont	15			
204 Fort Concho	15		16	16
207 Texas Capital	17	17,20	17	17-18
209 Permian Basin	18		19	
224 Abilene	18			
225 East Texas	18			19
233 Central Texas	19		19	19
237 Magic Valley				
353 Wichita Falls	19			
205 Western Mexico	16			

183 Joyce Armstrong	Arlington	Life Master	174 David Kuykendall	Pearland	Bronze LM
201 Susan Gore	Silsbee	Life Master	207 Ronald Lantz	Austin	Bronze LM
254 Diane Patience	Chicago	Life Master	174 Tonya McNabb	Houston	Bronze LM
254 Ellen Snyder	Laredo	Life Master	174 Odis Nolte	Conroe	Bronze LM
174 Helen Watts	Shenandoah	Life Master	174 Rekha Parekh	Sugar Land	Bronze LM
225 Curtis Bourland	Texarkana	Life Master	172 Jo Ann Robertson	Bulverde	Bronze LM
174 Judith Boyce	Pasadena	Life Master	207 Annette Ruth	Georgetown	Bronze LM
174 Judith Busby	Houston	Life Master	207 Catherine Supple	San Marcos	Bronze LM
176 Liz Castioni	Frisco	Life Master	176 Mary Lynn Trentham	Richardson	Bronze LM
207 David Collins	Horseshoe Bay	Life Master	174 Carolyn Wedel	Houston	Bronze LM
174 Connie Conover	Houston	Life Master	174 Hillel Weinbaum	Sugar Land	Bronze LM
172 Jeanne Dawley	San Antonio	Life Master	183 M Howard	La Quinta	Silver LM
183 Virginia Farley	Arlington	Life Master	174 Donna Hrachovy	Sugar Land	Silver LM
174 Evvie Gilbert	Seabrook	Life Master	174 Margie Patterson	Spring	Silver LM
174 Jim Goodale	Houston	Life Master	233 Jean Townsend	Georgetown	Silver LM
183 Lindsey Jones	Oak Point	Life Master	207 Osman Ahmed	Austin	Silver LM
174 Carl Mathews	Houston	Life Master	207 A Ansari	Austin	Silver LM
174 Abid Mumtaz	Houston	Life Master	176 Lynn Cooper	Dallas	Silver LM
183 Jim Nixon	Flower Mound	Life Master	174 Timucin Erkoc	Houston	Silver LM
174 Odis Nolte	Conroe	Life Master	233 Inez Grider	Georgetown	Silver LM
172 Jo Ann Robertson	Bulverde	Life Master	174 Phyllis Kuchta	Pearland	Silver LM
174 Cherry Schwarz	Houston	Life Master	207 Sunny Laird	Horseshoe Bay	Silver LM
174 Yvonne Serbin	Kingwood	Life Master	174 Marilyn Leiman	Houston	Silver LM
174 Sheryl Thomas	Richmond	Life Master	174 Eleanor Lipscomb	Houston	Silver LM
176 Christopher Tsai	Plano	Life Master	174 Erika Magid	Bellaire	Silver LM
173 Nicole Abadi	Mexico	Bronze LM	207 John Moore	Austin	Silver LM
207 J Bank	Austin	Bronze LM	176 Kristen Onsgard	Dallas	Silver LM
225 Jeff Brown	Texarkana	Bronze LM	174 Robert Reichel	Houston	Silver LM
174 Rhonda Bryant	Houston	Bronze LM	174 Armand Shapiro	Houston	Silver LM
205 Charles Chartier	Chapala	Bronze LM	207 Arthur Widen	Georgetown	Silver LM
174 Sophie Chen	Missouri City	Bronze LM	176 James Richman	Dallas	Ruby LM
174 Larry Cossey	Houston	Bronze LM	207 Sharon Dameron	Cedar Park	Ruby LM
209 Shirley Davenport	Odessa	Bronze LM	187 Billie Darnell	Rockport	Ruby LM
174 Mary Emmons	Houston	Bronze LM	353 Patty Hofer	Holliday	Ruby LM
174 Lynn Gamblin	Houston	Bronze LM	197 Howard Huynh	Lubbock	Ruby LM
207 Mickey Goldwater	Austin	Bronze LM	183 Lorraine Little	Benbrook	Ruby LM
172 John Hilbig	Bulverde	Bronze LM	172 Bill McCarty	San Antonio	Ruby LM
174 Sam Khayatt	Kingwood	Bronze LM	204 Norma Murray	Menard	Ruby LM
237 Michael Lane	Pharr	Bronze LM	174 Peggy Naughton	Houston	Ruby LM
207 Jean Marsh	Austin	Bronze LM	183 Dick Simon	Fort Worth	Ruby LM
174 Cheryl Mathias	Cypress	Bronze LM	174 Shih-Ming Yang	Houston	Ruby LM
187 Betty Mengle	Corpus Christi	Bronze LM	174 Romeo Bodrogi-Podoaba	Houston	Gold LM
174 Brenda Metz	Pearland	Bronze LM	172 Hank Eng	Leon Valley	Gold LM
201 Wayne Outlaw	Orange	Bronze LM	172 David Morris	Boerne	Gold LM
225 Jo Ann Parten	Emory	Bronze LM	225 J R Wiegmann	Wake Village	Gold LM
254 Diane Patience	Chicago	Bronze LM	174 Karen Bachman	College Station	Gold LM
254 Helen Rivas Rose	Sn Mgel Allende	Bronze LM	176 Rich Brandenburg	Coppell	Gold LM
183 Gail Rutledge	Lewisville	Bronze LM	183 Mary Alice Giordano	Fort Worth	Gold LM
173 Monica Schapira	Mexico	Bronze LM	207 Lois Goodman	Austin	Gold LM
176 Melvin Sharp	Dallas	Bronze LM	225 Bari Hart	Athens	Gold LM
197 Beth Sikes	Lubbock	Bronze LM	174 William Kibikas	Friendswood	Gold LM
174 Cheryl Smith	Houston	Bronze LM	207 B J Sanders	Austin	Gold LM
207 George Steele	Austin	Bronze LM	174 Joseph Volanski	Spring	Gold LM
176 Martha Ward	Plano	Bronze LM	225 Stewart Angel	Wake Village	Sapphire LM
174 Helen Watts	Shenandoah	Bronze LM	174 Nelson Brown, Jr	Houston	Sapphire LM
176 Betty Woodward	Fairview	Bronze LM	183 Norris Drum	Denton	Sapphire LM
176 Dan Woodward	Fairview	Bronze LM	254 Faye Guidry	Laredo	Sapphire LM
207 Mark Anderson	Cedar Park	Bronze LM	174 Julie Halperin	Conroe	Sapphire LM
174 Stephen Banks	Houston	Bronze LM	174 Catherine Miller	Spring	Sapphire LM
173 Raul Bouffier Jr	Sp Garzagarcia	Bronze LM	174 Sandra Parker	Sugar Land	Sapphire LM
207 David Collins	Horseshoe Bay	Bronze LM	174 Ira Chorush	Houston	Emerald LM
174 Jack Dean	Houston	Bronze LM	176 Phil Clayton	Frisco	Diamond LM
174 Jeanette Dean	Houston	Bronze LM	172 Carolyn Riely	San Antonio	Diamond LM
174 Jim Goodale	Houston	Bronze LM	183 Greg Resz	Weatherford	Emerald LM
174 Elizabeth Jackson	Houston	Bronze LM			

MARCH	
PHILEDELPHIA NABC	7-18
Beaumont (Jan 11)	8-10
Richardson 299er	16-18
DFW REGIONAL (16 Jan Issue)	19-25
APRIL	
Kerrville (6)	5-8
Austin 199er	21-22
Houston 299er	26-29
Dallas 99er	27-29
MAY	
Houston (8)	4-6
Houston GNT (8)	4-6
Austin (17)	10-13
AUSTIN NLM REGIONAL (17)	10-13
Houston NLM	17-20
Denton NLM	18-20
Temple 499er	18-20
Richardson (12)	24-28
San Antonio	May 31 -June 3
JUNE	
Houston	8-10
Midland	8-10
Austin NLM	9-10
DISTICT 16 STaC	11-17
Grapevine	22-24
Houston 299er	21-24
JULY	
AUSTIN REGIONAL	2-8
Houston 299er	12-15
Dallas 199er	13-15
Tyler	27-29
ATLANTA NABC	25-AUG 5
AUGUST	
Lubbock	3-5
Houston	9-12
Waco	10-12
Beaumont 499er	16-18
Austin	18-19
SAN ANTONIO NLM REGIONAL	22-25
RICHARDSON REGIONAL	28-Sep 3

Paul from Page 1 regional tournaments called Purple Pass. The Lone Star Regional in Houston was our first test and the Dallas Labor Day Regional will also participate. This year, ACBL is paying the credit card expenses. Feedback was generally positive in Houston with many players participating. In order to speed the process, only 1 credit card is accepted per entry. This seemed fine for pairs events, but some teams complained about the limit. The goal is to provide more convenience for the players and reduce cash handling by the directors.

Feedback on the latest round of Big Ideas has been received and the Board will be discussing them during our Philadelphia meeting. Thanks to all of you who took the time to participate in the survey.

The 2nd REACH (Regional Event At the ClubHouse) was conducted Feb. 3 and 5 thru 9. 352 D16 players registered; second only to D9, Florida. This is an experimental program and I would appreciate receiving feedback from clubs and players who participated.

I had the opportunity to attend the Valentine Sectional in Ajijic February 8 to 10. Ajijic is located near Guadalajara and is on Lake Chapala. The hospitality from Unit 205 was great and it was fun playing with a mix of people from the units in Mexico with a lot of Canadian and U.S. visitors. Dan Storch the head of Marketing and Education was there too and we had very interesting discussions about membership growth in Mexico and are excited about the potential.

Paul Cuneo



**NANCY PASSELL
GRAND LIFE
MASTER**

Nancy Passell of Plano, Texas is District 16's newest Grand Life Master which is the highest rank one can achieve within the ACBL. A Grand Life Master must have earned 10,000 master points and won at least one nationally rated event. Nancy has won four national titles and had 8 seconds, not to mention a World title won in Yokohama, Japan in 1991. Nancy started out playing rubber bridge in high school and continued with her college buddies at Indiana University. After graduation she stayed in Bloomington to teach school and as her college bridge friends gradually moved away she really began to miss the card play. She heard there was a bridge club in Bloomington where you could go play and they would even find you a partner! She decided to check it out and was almost immediately hooked. Thus began her introduction to duplicate. Soon she was traveling to tournaments on weekends and achieving Life Master. In 1979 a group of her duplicate friends were planning a trip to the spring NABC in Norfolk, Virginia. Nancy went along and her friends insisted that their group take a day off from playing and kibitz some of the top players in the prestigious Vanderbilt Teams. Nancy reluctantly agreed even though she'd rather have been playing. She took an empty kibitzer seat and lo and behold, it turns out she was kibitzing Mike Passell! They were married within the year. Nancy's bridge career slowed down quite a bit for around 20 years while raising her and Mike's daughter, Jennifer. Though she's back to playing a lot more now, she and Mike both adore the time spent doting on their two granddaughters who live nearby.

**2018
Unit Goodwill**



- 172 Carol Ramberg
- 174 Bob Otis
- 174 Carol Winograd
- 176 Gary Hercules
- 176 Joan Pyne
- 176 Sheri Wolkenstein
- 183 Jean Kidd
- 183 Kay Jones
- 187 David Ticen
- 187 Melissa Plumb
- 197 Pat Williams
- 197 Pat Rivers
- 201 Liz Mackenzie
- 201 Kris Cherry
- 207 Pat Berry
- 207 Sally Sassen
- 209 Patti Heard
- 209 Scott Vaughn
- 225 Janie Wolaver
- 225 Jimmie Hubbard
- 233 Carol Ann Wadley
- 233 Lenora Parrish

**DEADLINES for
May/June 2018 Issue**
Announcements: April 1st
Articles, Columns: Aprtl 6th
Pictures & Copy must be digital.
E-mail to: scorecard16@gmail.com



SCORECARD
Scorecard (ISSN 10560920) Published bimonthly on the first day of January, March, May, July, September and November by District 16 of the American Contract Bridge League, 10710 Tybalt Trail San Antonio TX 78213 Yearly subscription to members, \$ 3.60, paid with annual dues. Periodical Postage paid at Memphis, TN and at additional mailing offices.

Moving? Missed Issues
Send address changes to:
ACBL Data Processing Dept.
6575 Windchase Blvd.
Horn Lake, MS 38637
662-253-3130 or
e-mail addresschange@acbl.org.
Include ACBL number.

Send copy photos & announcements to:
Email: scorecard16@gmail.com

All advertising and copy should be submitted to the editor by the **first** and **sixth** days of the month, respectively, preceding publication. Advertising rates available from the editor upon request. Pictures should be in digital format. For replies, include a self-addressed, stamped envelope.

Editors
Executive: Ira & Ellen Hessel
Managing: Ellen Hessel
GNT/NAP Reporter: Ira Hessel
National Reporter: David Sokolow
The Scorecard Committee
Donna Compton, Chair
Scott Humphrey
Annette McCarty

DISTRICT 16 GRAND NATIONAL TEAM FINALS & ELECTION SECTIONAL MAY 4 – 6, 2018 • HOUSTON, TEXAS

Marriott Westchase 2900 Briarpark Dr.
Houston TX 713.978.7400

Friday, May 4th, 2018

7:30 pm Flight B Qualifying Round, 1st of 2 sessions

Saturday, May 5th, 2018

10:00 am Championship, A & C Flight** Qualifying Round, 1st of 2 sessions

10:00 am Flight B Qualifying Round, 2nd of 2 sessions

2:30 pm Championship, A & C Flight Qualifying Round, 2nd of 2 sessions

2:30 pm Flight B KO 1st of 3 sessions

Sunday, May 6th, 2018

10:00 am Championship, A & C Flights Semifinal KO

10:00 am Flight B Semifinal KO 2nd of 3 sessions

2:30 pm Flight B Final KO 3rd of 3 sessions

2:30 pm Championship, A & C Flights Final KO

**Championship and Flt A Teams, please notify BJ Sanders prior to the event or register on site 30 minutes prior to game time

Director in Charge: Tom Marsh

GNT Coordinator: BJ Sanders bjinaustin@gmail.com

Conditions

Championship Flight: No MP Restrictions (no pre-qualification)

Flight A: 0 - 6000 Masterpoints, as of August 6, 2017 (no pre-qualification)

Flight B: 0 - 2500 Masterpoints, as of August 6, 2017. All team members must have pre-qualified at a District 16 Club or Unit Qualifier.

Flight C: 0-500 Masterpoints AND Non-Life Master, as of August 6, 2017. All team members must have pre-qualified at a District 16 Club or Unit Qualifier.

All players must be residents of District 16

“Who are those guys?” B. Cassidy

No it was not Lord Baltimore or Rodwell and Meckstroth. At the Houston Regional, 4 players dominated the tournament in an admirable fashion. After a slow start on the first day Erkoc (Timao) Timucin and Richard Pavlicek won the next two pair games. For the final 4 days, they were joined by Ira Chorush and Phil Clayton. The top bracket in the Swiss teams was so strong that some players of high national standing were forced to the second bracket. Nonetheless these four won three and finished a close second in a third to a team that included 2 recent Bermuda bowl champions.

Richard and Timo won 186.69 at the regional and, in only 4 days, Phil and Ira won 117.24 of 125.04 available.

Richard Pavlicek played on many teams with Bill Root teamed by Kaplan and Kay. They were major figures in late 20th century bridge. Richard's web site "For Bridge players" is a great service to all of us. Check it out at <http://www.rpbridge.net/>

Ira Chorush, who has not been playing much the last 4 years, has an outstanding record including NABC championships and had strong partnerships with Eddie Wold and Hemant Lall.

ErkoTimucin has resided in Houston for a while. Until the Regional he had no results on ACBL Live but he was on the Turkish national team. He has had limited playing time in the USA. I am sure we will hear more from him.

Phil Clayton was an active player from California and formerly played professionally. Phil works for Toyota and moved to Frisco in April 2017 when Toyota relocated their HQ to Plano. With his success in Houston, Phil became a Diamond LM

Bridge, Backgammon and the Future

Bridge and backgammon are 2 seemingly dissimilar games with remarkable concepts in common with both play and promotion.

To master either, one has to have an understanding of both mathematics and spatial concepts. I have played both for over 40 years and it is clear that neither can be mastered in one lifetime, which so adds to the appeal.

I have seen both deal with challenges to sustain popularity and think both can learn from one another. Both games have faced the challenge of an aging population.

The first week of February is a favorite time for me. I spend the early part of the week at the Houston regional and have the good fortune to play against many great players at the the 6th largest regional in the ACBL Then I return to San Antonio to play in the Texas Backgammon Championship which has become a major stop on the national circuit. Some of the acknowledged greats come to play and enjoy our splendid river walk. The tournament is held in the historical Menger hotel where Teddy Roosevelt recruited some of his Rough Riders and where many ghost hunters come to catch his ghost. The downtown is a great attraction, just like it was when we had nationals here. We typically get at least half of the top 32 players in the world!

Now, backgammon has faced a decline since its last heyday in the 1980's. But thanks to some excellent local directors and the growth of the USBF is making a strong renaissance. In the 1980s we had well organized monthly tournaments in Dallas and Houston. Eventually attendance decreased and the tournaments disappeared but local clubs kept the game going. The core crowds in Dallas and Austin survived but Houston dissipated and San Antonio withered away. San Antonio is being revived. Houston was revived mostly from the efforts of one man but when he sadly passed away it went into decline. Bill Riles has brought the group back and eventually became the leader of the USBF which is making great strides.

Computers have been a great boon to learning and growing backgammon. New players can first become attracted to the game and eventually join the live groups. Former players get news of the newer groups and come back to the game.

Like backgammon online bridge is a great attraction to many but can't compare to the live game. I would way rather play face to face in both games. The real attraction of computer backgammon is that your matches can quickly be analyzed by a computer program. The programs play at world class level and when I check my errors I am amazed that most of them, like my bridge errors, are oversight and lack of focus. I await when I can play bridge and then have the computer analyze my errors. That has been a factor to growth of backgammon and will be to bridge.

The backgammon organization is leading the movement to get backgammon taught in schools. The pitch? Math skills in this country has been decimated by reliance on calculators. Trying to teach percentage to my premed chemistry students I used an example of what per cent of my brain is water if my 12 ounce brain was 9 ounces. All at once most reached for their calculator! So the pitch is backgammon will help the learning of fundamentals in real life problems. Bridge should do the same.

Now from my experience the key to the growth of either game is having a dedicated organizer. One good person could attract others that create the upward spiral. We see this in bridge and contrary to popular opinion there are many places in D16 and elsewhere that see growth. We welcome any story of local games that are doing extraordinary efforts.

Make sure you thank your Texas stars!

Gary King

2018 District 16 Teacher of the Year by Laura Delfeld

District 16 is pleased to announce the winner of the 2018 Teacher of the Year award--**Gary King**. Gary's intense commitment to bridge spans decades. He started playing with his parents at age 11 and continued until he left for Texas A&M, where he began his bridge teaching career. After graduating with a degree in Mechanical Engineering, Gary moved to Houston where he continued to teach and also direct at the Bridge and Games Studio from 1986-1990. In 1987 he and a friend in conjunction with Alcatel, a French organization, ran the first computer generated, simultaneous pairs in the world.

Gary worked full-time at Powell Industries for 33+ years, during which time he made steady and significant contributions to his District and Unit. For ten years, he wrote "The Bridge Companion" newsletter and for seven years wrote the I/N column for the District 16 Scorecard. He currently sends out a free, weekly email lesson every Wednesday and has over 2,500 subscribers.

His teaching activities run the range of beginning Learn to Play Bridge classes through intermediate classes. Gary's style tends to be interactive with students challenged first, followed by discussion and corrective action. He holds an average of about 15 classes per week and is beloved by his students. Here's a quote from one of his students:

"Gary is an excellent teacher, and his style reminds me of the Socratic method used in law school. Instead of telling me how to do something, he nudges me in the right direction. Gary can always explain why a card or a bid is correct, which makes it easier to apply that lesson to other situations. Gary is a thoughtful and humorous person, and is always fun to be around. He can interact with students on a variety of skill levels, and meet each student where that student is."

Congratulations, Gary! Your commitment to the game and its players is highly appreciated.

And congratulations to the other nominees for this year's award:

Robert Buchanan and Don Reynolds (nominated as a team, "Duck")--Ft. Worth

Betsy DuBose--Houston

Gary King--Houston

Pam LaShelle--Austin

Sharon Lux--Dallas

Gayle Moyers--Austin

Gerrie Owen--Dallas

Sally Sassen--Austin

This year's field was exceptional both in quality and quantity. The award committee comprised of Betty Starsec, Dave Glandorf, Mary Jane Orock, Nancy Smalley, and Laura Delfeld worked hard to review all the material sent in support of the nominees and is pleased to announce that these teachers will be automatically renominated for next year's award.

Thank you to all the students who spoke on behalf of their teachers and to the teachers who provide the lifeblood of our District.

Ed. Note Laura Delfeld of Austin, is the 2014 North American Bridge Teacher of the Year.

The Units with the outstanding teachers do the best at growing their Units. In recent years Austin has had a remarkable record in Flight B and C GNT and NAPs.

In Memoriam * denotes Life Master

- Frederick A. Carvin, Anahuac
- * Ervie L. Freeman, Houston
- Marge Juren, Woodway
- * George B. Keiller, Houston
- Bruce J. Relyea, Fort Worth
- * Mrs. Gay E. Schleicher, Richardson
- Thomas M. Wagner III, Jefferson
- Sig Dahl, Austin
- Sue K. Gill, Houston
- * Charles Miller, Houston
- * John H. Monroe Jr., Houston
- * Wayne E. Rauschuber, San Antonio
- * Mrs. Ruby Woods, Andrews

2017 DISTRICT MASTERPOINT LEADERS

0 to 5		5 to 20		20 to 50		50 to 100	
1. William Eads, Fort Worth	100	1. Jin Chu, Plano	80	1. Ian Fetterley, Houston	111	1. Carol Ramberg, Fair Oaks Ranch	179
2. Corbin Shouse, Spring	94	2. Gwendolyn Faherty, Granbury	73	2. Gordon Young, Pictou NS	103	2. Sherra Kay Read, The Colony	122
3. Robert Bender, Plano	79	3. Patricia Santini, Waco	72	3. Lucy Locke, Lubbock	91	3. David Croissant, Irving	118
4. Charles Spradlin, Longview	64	4. Cameron Lawton, Spring	68	4. Ann Dahn, Spring	87	4. Marsha Doyle, Houston	114
5. Susan Thom, The Woodlands	61	5. Barry Malone, Arlington	62	5. W Kenneth Davis, Austin	87	5. Michael Blanchard, Benbrook	109
6. Mark Levy, Houston	58	6. Margaret Jo Duff, Richardson	59	6. Ross Ramsey, Flower Mound	84	6. Robert Holliday, Plano	109
7. Peter Naimoli, Austin	57	7. Gregory Andrews, Houston	59	7. Paul VanHoorebeke, Lubbock	72	7. Russell Chandler, Houston	105
8. Paramjeet Ahluwalia, Plano	46	8. Paul Andrews, Houston	59	8. Bob Allen, Austin	71	8. Ronnie Martin, Friendswood	103
9. Wayne Corbett, Arlington	44	9. Eric De Rouffignac, Austin	58	9. V (Ginny) Hargrove, Lubbock	70	9. Bruce Weiner, Houston	91
10. Mike Carter, Dallas	42	10. Ron Day, Plano	57	10. Deanna Davis, Dallas	70	10. Carolyn Oliver, Beaumont	89
11. Jim Nicas, Spring	41	11. William Duff, Richardson	53	11. Michael Sadler, Abilene	69	11. Ede Weiner, Houston	88
12. Dan Sondgeroth, S	41	12. Curt Wyman, Austin	51	12. David Littmann, Brookshire	69	12. Gerald Irion, Kerrville	88
13. Barbara Hodges, The Woodlands	37	13. Jay Evert, Houston	49	13. David Salem, Dallas	63	13. Robert Craig, San Antonio	85
14. David Hobson, Portland	36	14. Paulette Armstrong, Plano	47	14. Phyllis Dillard, Spring	62	14. Paul Fafoutakis, Universal City	85
15. Betsy Smith, Wichita Falls	36	15. Gigi White, Bellaire	47	15. Alice Wright, Denton	61	15. P.D. Sharma, San Antonio	83



Jaroslaw Langer



Joyve Anderson



Jack & Jeanette Dean



Gary Anderson



Roxann Swenson



Ian Fetterley



Carol Ramberg

100 to 200		200 to 300		300 to 500		500 to 1000	
1. Jarek Langer, Austin	291	1. Liz Jacobson, Laredo	214	1. Gary Anderson, Austin	454	1. Jerry Barrett, Austin	818
2. Joyce Anderson, Fort Worth	249	2. Jack Dean, Houston	209	2. Roxann Swenson, Austin	290	2. Sharon Dameron, Cedar Park	783
3. Floyd Gerwig, Plano	185	3. Jeanette Dean, Houston	209	3. Yaoguang Zhu, Austin	258	3. Steven Bell, Cypress	507
4. Kun He, Plano	182	4. Cheryl Rider, Dallas	172	4. Martha Ward, Plano	202	4. Larry White, Grapevine	429
5. Laura Chandler, Houston	152	5. Laura Craft, Leander	172	5. Jerry Frankel, Plano	191	5. Courtney Coffman, The Woodlands	384
6. Charles Mogged Jr., Colleyville	139	6. James Rider, Dallas	172	6. Mary Cris Emmons, Houston	190	6. Kristen Onsgard, Dallas	340
7. Jeannie Stone, Houston	139	7. James Cuccia, Schertz	164	7. Sheryl Thomas, Richmond	186	7. John Moore, Austin	335
8. Sandi Mills, Houston	138	8. Victor Tong, Houston	163	8. Ron Brown, Houston	181	8. Thomas Rush, Houston	320
9. Clifford Smith, Marietta	132	9. Mary Lynn Genovesi, Fairview	157	9. Lysa Nguyen, Austin	180	9. Marilyn Adams, Beaumont	317
10. Linda Buzan, Midland	124	10. John Montgomery, Tomball	148	10. Jim Nixon, Flower Mound	177	10. Alberto Cohen, MX	317
11. Audie Brooks, Midland	124	11. Frederick Gregory, Houston	148	11. Joyce Armstrong, Arlington	167	11. Rosalind Smith, Dallas	300
12. Jeanne Dawley, San Antonio	122	12. Ribs LaMothe, Coppell	148	12. Robert Tyler, Austin	164	12. Thomas Smith, Austin	255
13. Robert Vilyus, Houston	121	13. Curtis Bourland, Texarkana AR	145	13. Susan Gore, Silsbee	163	13. Tom Hogle, Houston	250
14. Marilyn Gale Vilyus, Houston	121	14. Sandra Lehner, Spring	142	14. Charlie Kemp, Longview	158	14. Shawn Drenning, Austin	246
15. Wayne Williams, Fort Worth	120	15. Karen Cohen, Dallas	141	15. Dale Remmers, Plano	154	15. Sheila Harrison, Houston	242



Howard Huynh



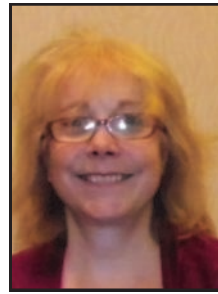
Anita Albert



Milton Neher



Jerry Barret



Sharon Dameron



Susan Stubinski



Harry Elliott

1000 to 1500		1500 to 2500		2500 to 3500		3500 to 5000	
1. Howard Huynh, Lubbock	440	1. David Ticen, Victoria	446	1. Milton Neher, Richardson	695	1. Susan Stubinski, Houston	567
2. Anita Albert, Austin	397	2. Charles Brown, Arlington	395	2. Harry Elliott, Cypress	438	2. John Schwartz, Plano	562
3. Ann Parker, Dallas	391	3. Kim Brinkman, Highland Vlg	391	3. Patti Mullendore, Houston	422	3. Charlene Sands, Pflugerville	531
4. Larry Levin, San Antonio	378	4. Steve Vaughn, Kingwood	336	4. Jerrold Harrington, San Antonio	409	4. David Pearlman, Southlake	443
5. Scott Nason, Dallas	334	5. Sidney Perutz, Dallas	327	5. Joe Black, Austin	405	5. Louis Sachar, Austin	437
6. Yan Song, Plano	325	6. Jeff Dater, Dallas	325	6. Hua Yang, Plano	391	6. Virgil Massey, Driftwood	434
7. Kitty Wong, Pearland	307	7. William Kibikas, Friendswood	318	7. Bill Gemas, Conroe	355	7. Anton (Tony) Haddad, Houston	427
8. Bob Otis, San Antonio	299	8. Barbara Ferm, Dallas	313	8. James Breihan, Houston	339	8. Bill Osborn, Frisco	402
9. Mary Ann White, Laredo	295	9. Edwin (Ted) Bain III, Houston	312	9. William Daniel III, Spring	339	9. C David Mitchell, San Antonio	398
10. James Ochsner, Houston	291	10. Sandy Potts, Austin	302	10. Jimmy Reynolds, Laredo	331	10. Martha Young, Dallas	381
11. Raleigh Williamson, Houston	274	11. Harold Copeland, Houston	288	11. Robert Buchanan, Arlington	319	11. Jeffrey Kroll, Conroe	378
12. Bill Kiehnhoff, Sugar Land	273	12. Chester Neel Jr., Tyler	280	12. Claudette Hartman, Austin	318	12. Gary Neisler, Crowley	375
13. Jo England, Dallas	272	13. T Jean Kidd, Lantana	276	13. Daniel Jackson, Spring	315	13. Larry Davis, Austin	375
14. Marlene Blumentritt, Midland	264	14. Jane Kirby, Dallas	273	14. Rick Stell, Houston	311	14. Balda St Pierre, Houston	349
15. Stan Pushkarsky, Austin	237	15. Terri O'Brien, Leander	269	15. Ariel Leibovitz, Houston	306	15. Randall Lake, Houston	347



John Schwartz



Bruce Wick



Mark Bumgardner



Steve & NancyKornegay



Chris Compton



Greg Hinze

5000 to 7500		7500 to 10,000		Over 10,000		Sectional YTD Leaders	
1. Bruce Wick, Houston	567	1. Mark Bumgardner, Dallas	953	1. Chris Compton, Dallas	2747	1. Stephen Kornegay, N Richland Hls	381
2. Jack LaVigne, Houston	525	2. Nancy Kornegay, N Richland Hls	705	2. Greg Hinze, San Antonio	2390	2. Nancy Kornegay, N Richland Hls	357
3. Virginia Noelke, San Angelo	434	3. Marion Gebhardt, Richardson	701	3. Mike Passell, Plano	2254	3. Mark Bumgardner, Dallas	345
4. Mary Pat Gentry, Houston	417	4. Nancy Passell, Plano	578	4. Eddie Wold, Houston	2043	4. Nagy Kamel, Plano	315
5. Betty Starzec, Sugar Land	405	5. James Thurtell, Dallas	561	5. Venkatrao Koneru, San Antonio	1455	5. Dan Morse, Houston	310
6. James La Fountain, Temple	385	6. Bill Staats, Southlake	465	6. Robert Morris, Houston	1066	6. Dave Swarouth, San Antonio	280
7. William White, Arlington	378	7. Rosemary Kelley, San Antonio	415	7. Dan Morse, Houston	951	7. Donna Swarouth, San Antonio	278
8. Phillip Grothus, Houston	371	8. Ed Rawlinson, Helotes	410	8. Dave Swarouth, San Antonio	875	8. Milton Neher, Richardson	241
9. Jay Gibson, Dallas	366	9. Ellen Hessel, San Antonio	357	9. Donna Swarouth, San Antonio	854	9. Sharon Dameron, Cedar Park	206
10. Melody Gann, Arlington	339	10. Michael Murphy, Dallas	319	10. Bart Bramley, Dallas	838	10. John Zilic, Houston	202
11. James Bauer, Dallas	339	11. Pat Cassidy, Arlington	303	11. Hemant Lall, Dallas	749	11. John Schwartz, Plano	197
12. David Henke, Houston	338	12. Bryan Storey, Frisco	292	12. Stephen Kornegay, N Richland Hls	737	12. James Thurtell, Dallas	197
13. Victor Sitton, Sugar Land	334	13. Buddy Hanby, The Woodlands	288	13. Barry Schaffer, Frisco	692	13. Hua Yang, Plano	197
14. Shirley McKee, Houston	332	14. Sally Wheeler, The Woodlands	274	14. Nagy Kamel, Plano	680	14. Ed Rawlinson, Helotes	195
15. David Sokolow, Austin	304	15. Stephen Schwall, Houston	237	15. Gail Wells, Houston	665	15. Tom Breed, Kingwood	190



Laurie Ann Levin
172 San Antonio



Nancy Strohmer
174 Houston



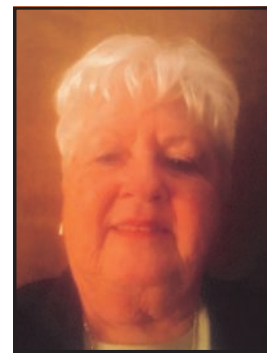
Cheryl Clark
176 Dallas



Janet Jordan
183 Fort Western



Eleanor Sherwyn
187 Corpus Christi



Paula Park
197 Lubbock



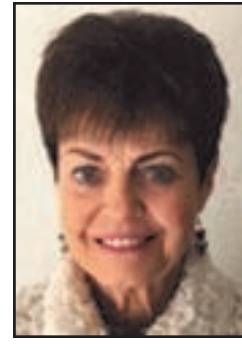
Carolyn Worsham
201 Beaumont



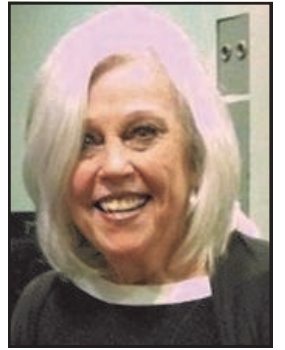
Joyce Cooper
207 Austin



Marlene Blumentritt
209 Permian Basin



Sandy Hilliard
225 East Texas



Mary Adams
233 Central Texas

Texas Stars

The 2015 District 16 Texas Star Awards and Texas Star Pins were presented to recipients at the Houston Regional in January. The Texas Star Awards are given to worthy volunteers at the unit level for exceptional service performed in their own unit. Congratulations to all!

Laurie-Anne Levin 172 San Antonio

Laurie-Anne Levin has been the center of the San Antonio bridge community since she opened the Fiesta Bridge Club in 2013. Laurie came to us from South Africa (for those of you who have noticed her slightly non-Texas accent!) She and her husband, Larry, fled with their sons from the country's harsh apartheid regime, choosing San Antonio as their new home. In 2011, Unit 172 honored her with our annual Goodwill Award, recognizing her service and the great spirit of encouragement she offers the bridge community. Laurie is a club director and an ABTA Master Teacher. She is a Gold Life Master who is noted for her friendly and enthusiastic support of players, both novice and experienced. Her club offers daily games and hosts various sectionals throughout the year; her diligent efforts and hard work on behalf of the Unit are always evident in all she does. South Africa's loss is San Antonio's gain!

Nancy Strohmer 174 Houston

Unit 174 Texas Star Award 2018 – Nancy Strohmer

In 2003, Nancy and her husband, Hans, were on a cruise that introduced them to duplicate bridge. In 2006, they started playing regularly and they were hooked.

To say Nancy was hooked is putting it mildly. She has a passion for the game and very quickly became involved in what makes our unit tick. Nancy has served on our unit board for the past six years. She served as President (twice), Vice President, Secretary, Charity Coordinator, ABA/ACBL Pairs Chair, and she co-chaired and chaired tournaments including our 2016 and 2018 Lone Star Regionals. In 2012, Nancy created an Events and Classes newsletter and was the editor until she passed the baton recently. As you can tell, there is not a hat that Nancy cannot or will not wear!

At our tournaments our board members wear a large button that says, "Ask Me", and players will ask! However, our players seem to think Nancy's is permanent. If she doesn't have an answer at the time she will have it within an hour. She will always have a huge smile, making players feel at home and ready to help. If we just had a few more Nancys!

Cheryl Clark 176 Dallas

Over the past several years Cheryl Clark has done any and everything for the Dallas Bridge Association. Having served six years on the Unit Board, Cheryl most recently served as President for 2 years, and as Treas-

urer for 2 years. She filled in as our business manager, saving the Unit money and managing through issues. While moving the unit forward, Cheryl was a unifying and stabilizing force. She trained many new board members and was always a supportive team player. She led the way to more savvy investments and better business practices.

While Cheryl recently stepped down from the board due to term limits, she continues to help Unit 176 by serving on the financial oversight and advisory team. Unit 176 recognizes and applauds all that Cheryl Clark had done to lead us. Unit 176 is pleased and honored to present our 2018 Texas Star to Cheryl Clark.

Janet Jordan 183 Fort Western

Janet serves our Unit in many ways. She is a long-time director, running multiple games each week. She takes a particular interest in new players, running limited games for them and teaching classes to help them improve their games.

Janet has served on the Unit board for the past four years, where her contributions are frequent and highly valued.

Finally, and perhaps most importantly, Janet volunteered to be thrown into the deep end of the pool three years ago when our long-time Tournament Chair left that position. With absolutely no experience in this area Janet hit the ground running and did a fantastic job. Tournament sites have been upgraded, the financial results have been much better, and our Unit has gotten a reputation for serving some of the best food around.

Janet is the most cooperative person we know, and the easiest to get along with. She is always ready and willing to take on new responsibilities, which she does frequently, and she does everything with the utmost grace and charm

Eleanor Sherwyn 187 Corpus Christi

Eleanor began her bridge career learning in December of 1990 while living in Saudi Arabia and having some free time. She learned the basics quickly and became engrossed in the game. By March of 1993 she was teaching beginners in Saudi and traveling out of the Kingdom to Regionals and NASC\$ in the US. Europe and Ireland as well as the Middle East. She enjoyed the lessons given in the Kingdom by Mike Lawrence: in 1996 she was nominated to the National Good Will Committee by Max Hardy, an honor which she treasures to this day. In 2000 Eleanor met Don Varvel, and in 2001 she moved back to the States: in 2003 Eleanor and Don were married at the Philadelphia Nationals between sessions...They won the afternoon ses-

sion but lost the evening session after their wedding! Don and Eleanor continue to be partners to this day!

Eleanor has been teaching a beginning/intermediate class on Tuesday afternoons at the Bridge Club of South Texas, in Corpus Christi. Anyone is welcome on any Tuesday.

Eleanor is a dedicated member of our Unit teaching newcomers and supporting our games - she should receive the Texas Star for her good works.

Paula Park 197 Lubbock

The nominating committee for the Unit 197 Texas Star Award is proud to nominate Paula Park for this year's Texas Star Award. She has served as Unit president for the last 2 years and has done an admirable job. She has also served on some club boards. She helped bring food and organize a Christmas party a few years ago and has always been a great supporter of all our games. She has also helped with lessons for beginners. We are proud to present Paula with this award.

Our Life Master Goodwill nominee is Pat Williams. She moved here from Ruidoso and has been wonderful to play with the less-experienced players. She is one of the most pleasant members in our Unit. Ruidoso's loss was certainly our gain.

Carolyn Worsham 201 Beaumont

Unit 201 proudly nominates our President, Carolyn Worsham, for the 2018 Texas Star Award. Her contributions to our club began soon after she joined ACBL in February 2011. Her computer skills have been an invaluable asset. Webmaster Jack Evans recognized this and welcomed her help to not only improve the website, but increase communications with members through emails.

Carolyn chaired two sectional tournaments, as well as the 2016 Spindletop Regional Tournament in Beaumont. Her innovative use of the hotel's technology to publicize information and winners' photos, etc. was very appreciated by all attending the tournament.

Her biggest efforts have been to chair the Longest Day for five years, raising about \$20,000 in those events for a cause about which she is passionate.

She has served on the U201 board since 2012 and as President since 2014. She also is District 16 Publicity Chairman.

Carolyn is a person who always goes the extra mile in whatever she is involved. Her attention to details and willingness to take on the toughest part of any project herself are some of her many attributes. Her caring for U201 members is proven by her un-

failing efforts to send out get-well, sympathy, or "we miss you" cards to members.

U201 members are so accustomed to her work that when she goes on vacation the common saying is "I sure will be glad when Carolyn gets back." We all know we are spoiled because no one can "fill her shoes" since she takes on so much responsibility and does so many jobs so well.

Joyce Cooper 207 Austin

Joyce was selected for long term contributions to Unit 207. She served as Secretary of the Unit for 5 years and as Vice President for 1 year. She came up with many innovative ideas for improving bridge in Austin, ran many successful tournaments, and wrote the Unit's Scorecard article for 5 years, using that vehicle to interview local bridge members and tell their stories to the community at large and to introduce them to Central Texas.

Joyce is originally from North Alabama, having come to Texas directly after college graduation. She has lived in Dallas, Houston, and Austin. She began playing duplicate bridge in 1999, and has been hooked on bridge ever since! Congratulations Joyce and thank you for being part of the Austin bridge family

Marlene Blumentritt 209 Permian Basin

Our Texas Star recipient is a lady of many achievements. She is a wife, a mother, an educator, an avid bridge player, director and devoted Catholic. Born in Lebanon, she received her college degrees in Damascus. She moved to London and met her husband, Russell Blumentritt. He is an American who hailed from San Angelo, Texas. Upon moving to Midland in 1975, she began her teaching career at Midland College and later taught math and Computer Science at UTPB. Marlene and Russell are the parents of two daughters who live in the Austin, Texas, area. She began her bridge life with the "gusto" of everything she does. She gained her life master in 2017. She provides her energy, time and computer skills to the Midland Club and helps the Odessa Club when needed. She has served as board member and other offices in the unit and club.

Our 2017 Texas Star recipient is the vivacious and energetic Marlene Blumentritt.

Sandy Hilliard 225 East Texas

After moving back to Canton, Texas 24 years ago, Sandy Hilliard got very involved in volunteer work for many worthy causes including cancer, the local community and especially foster children. She was recognized with several awards for her outstanding volunteer work, including Volunteer

of the Year for Texas, by Texas Council of Child Welfare Board in 2012. She has served in various positions on the Texas Child Protective Services Board. In addition she has also been Mrs. Claus for 44 years. This started when she lived in various places while her husband; Cary was serving in the military. She has continued her Mrs. Claus tradition every Christmas with a focus on foster families in the Canton area.

In addition to all the great volunteer work Sandy was doing, she also found time to get involved in duplicate bridge. She became a Life Master in 2000 and then became a director. She opened Nannie's Bridge House in 2013. This house was part of her husband's family farm and she made a few modifications to turn it into a great place to play duplicate bridge every Tuesday. Sandy also started a Monday evening game with free mini lesson and focus on bringing in and supporting new duplicate players. For the past three years, Sandy has been instrumental in teaching duplicate bridge to the third, fourth and fifth graders at Canton Intermediate School. Sandy has several duplicate bridge volunteers to help and the program has been a big success with feedback from the teachers that bridge had improved the student's math and logic skills. Unit 225 is proud to award Sandy Hilliard the 2017 Texas Star Award!

Mary Adams 233 Central Texas

Mary has given of her time and talent to our unit many times over the years. The spring of 2017 Mary taught 2 eight week sessions of beginning bridge at the Bridge Studio in Temple. Mary rose to the challenge of teaching a class which was half brand new bridge players and the other half, party bridge players who wanted to learn new concepts. As a result of these two classes, about a dozen people signed up as new members of ACBL. A new 0-20 club was established at the Bridge Studio specifically to help new members feel comfortable and to encourage them to continue playing. Several of them have joined in our regular games and played in the Bridge on the Brazos Tournament in Waco.

Several years ago Mary taught bridge during lunch at the Temple High School to introduce bridge to teenagers.

For the past several years Mary has volunteered to bring food for the Temple Tournament hospitality. At the 2017 tournament, Mary outdid herself by supplying all of the lunches on both Friday and Saturday.

By far the best reason for nominating Mary is her friendliness to everyone, making them feel at home, whether playing in Waco or Temple. Mary is known

**Unit 172
San Antonio**



Lew Spurlock

Hi. My name is Lew Spurlock and I will be taking over this column from Rebecca Brown. She deserves thanks from all of us for doing such a superb job over the last several years. Though she may be small of stature, she has big shoes to fill, but I'll try my best.

As background, I started playing bridge about 6 years ago. I had never played bridge at all before my wife bought me a computer disc for one Christmas that had various card games on it. One of those games was bridge. I printed off the rules and some basic instruction on bidding and started in. After a while I thought it was a fun game to play so I found where I could play an actual game.

I quickly found out I didn't know anything about the game but there were two wonderful women who asked if I would like a mentor. They taught me some basic conventions and helped me learn to play. Their patience entitles them to sainthood if it ever comes up.

Then I began to play at Turtle Creek Bridge Club (Fiesta's old name). I still vividly remember the anxiety I felt when I entered the building and sat at the assigned table, but I soon found out that the people there were friendly, and the challenge was enjoyable.

There are some common themes in this story that I'm sure resonate with many others. Everyone starts somewhere, and it is a difficult game to learn to play well. The bidding is like learning a foreign language and there are many dialects and variations. The play of the hands is so complicated whole books have been written on the subject.

The key to success is first to remember that this is a game and that the reason we play it is for the enjoyment and relationships we develop. As tennis star Martina Navratilova once said, "No matter where I go, I can always make new friends at the bridge table."

Because of its complexity, we constantly have to learn more about the game. We have a wonderful mentor program at Fiesta. If you are interested in finding a mentor or you are curious about becoming one, Lynn Pierson is the Board member responsible for the program, and she can help you out. In view of the need to study, the Unit is developing a lending

library at Fiesta which is being developed by Ed Rawlinson. He and others have donated books and the Unit is purchasing more so that everyone can have access to the best ideas on the game. There are ongoing educational classes available from some of the best players in the area available at a reasonable charge. The Unit is also developing a program where some of the better players discuss hand evaluation, bidding and play of the hand both from declarer's and the defenders point of view. This will be held on Mondays immediately after the game at Fiesta.

Finally, bridge is a humbling game in that the average player tends to go up and down in results. I've even heard some of the better players at Fiesta grumble about giving up the game because they weren't improving. I personally have gone from days of being at the bottom of the results to being on top. The key is not to become discouraged. The great UCLA basketball coach John Wooden said: "Losing is only temporary and not all encompassing. You must simply study it, learn from it, and try hard not to lose the same way again. Then you must have the self-control to forget about it."

Finally, be nice and encourage others to do the same. In an article entitled "Why Bridge is Losing Popularity" the author Charles Yu said: "I've had opponents, and even partners who were downright mean. I've had partners berate me for making a mistake, and I've seen opposing partners argue a each other after we made a contract that they should have set. That was a huge turnoff for me, and I've sort of stopped playing, partly for that reason."

Remember that we are playing a game for fun. As George S Kaufman once said, "I'd rather be South than be President."

San Antonio Winter

Jan 18-21, 2018
265 players 268 tables.

- 1 38.56 Rosemary Kelley
- 2 28.66 Terry Riel ,
- 3 28.66 Carolyn Riely
- 4 28.24 Bill Walker,
- 5 26.25 Marilyn Arnold
- 6 22.48 Thomas Trudeau
- 7 22.37 Dave Swarhout,
- 8 19.82 Ed Rawlinson
- 9 19.34 Donna Swarhout
- 10 18.01 Diane Olson
- Thursday Aft 499er Pairs-10.5 Tables** AB1. Cynthia Rivet-W Kenneth Davis AB2. Irene White-Jim Roff C1. Bertha Benavides-Adriana Quintanilla, S Pedro Garza C2. Marjorie Tucker-Marybeth Parsons
- Thursday AM Open Pairs-23.0**

- Tables / Based on 30 Tables A1. Rosemary Kelley-Everette Lewis A2. Marilyn Arnold-David Johnson Jr C1. Terri O'Brien-Anita Albert B2. Horatio Aldredge-Jacquelyn Aldredge C1. Jim Roff-Irene White C2. Leigh Primerano-Yesh Singh
- Thursday AM 499er Pairs-7.0 Tables** ABC1. Jon Pack-Anni Pack AB2. Bonnie Loudin-Ian Fetterley C2. Bertha Benavides-Adriana Quintanilla
- Thursday Swiss Teams-23 Tables** A1. Jerrold Harrington-C David Mitchell-David Johnson Jr-Marilyn Arnold A2B1. Jeri Tribo-Eugene Lux -Jean Blilie-Fran Vanecko B2C1. Wright Barnebey-Horatio Aldredge-Jacquelyn Aldredge-Carol Ramberg C2. Elisabeth Kay, Spring Branch ; James Cuccia, Schertz ; Charlotte Schuepbach-Mike Vivian
- Friday AFT 499er Pairs-14.0 Tables** A1/3 Carol McCord-Adrienne Juno AB1/3C1/2 Monica Gutierrez-Roberta Martinez AB1/3C1/2 S Hultquist-Bill Stillwell
- Friday AFT Open Pairs-29.5 Tables / Based on 40 Tables** A1. Jerrold Harrington-Bill Walker A2. Carolyn Riely-Terry Riely B1. Kim Brinkman -David Ticen B2. Wright Barnebey-K Carpenter C1. Bob Steidel-Debbie Schweiss C2. Joe Ramirez-Wayne Tindall
- Friday AM Open Pairs-24.0 Tables / Based on 36 Tables** AB1. Jerry Barrett-James Moody AB2. Karen Fillis-George Fillis C1. Jeanne Dawley-Takako Malley C2. Earl Cutler-Richard Arnold
- Friday AM 499er Pairs-12.0 Tables** ABC1. S Hultquist-Bill Stillwell ABC2. Jon Pack-Anni Pack
- Friday EVE Open Pairs-10.0 Tables** A1. Robert Tyler-e Laier A2/3B1. Scott Nason-Jeff DaterA2/3 Milton Neher-Marion Gebhardt B2. Larry White-Mike Peifer C1. Mary Driesbock-William Whittle C2. S Hultquist-Bill Stillwell
- Friday Knock Out-1-7 Tables** 1. Dan Morse-John Zilic, Houston ; Barry Schaffer-Mark Bumgardner 2. Diana Lecuona-Linda Mott-Janina Kuzma-Leigh Primerano
- Saturday AM Open Pairs-16.0 Tables / Based on 24 Tables** A1. Rosemary Kelley-Thomas Trudeau A2. Donna Swarhout-Dave Swarhout B1. Helen McCrae-Jo Neesvig B2/3 Anyemarie Weaver-Dorothy Rippstein C1. William Whittle-Mary Driesbock C2. Eleanor Siegal-Moshe Draznin
- Saturday AM 499er Pairs-7.5 Tables** ABC1. Beverly Flannery-June Eubank AB2. Jeanne Dawley-Evelyn Pitman
- Sunday Swiss Teams-1-7 Tables** 1 Rosemary Kelley-Thomas Trudeau-Diane Olson- Bill Walker 2. Terry Riely-Carolyn Riely-Marilyn Arnold-Richard Ware
- Sunday Swiss Teams-2-7 Tables** 1. Brett Elliott-Harry Elliott-Brian



**KERRVILLE
SPRING IN THE HILLS**

April 5-April 8, 2017
Inn of the Hills
1001 Junction Hwy 1-800-292-5690
Bridge Rate: \$98
**\$7.95 full breakfast
must be booked in advance**
** Request San Antonio Bridge League rate

Thursday,
April 5

Stratified Pairs 10:00 am
Stratified Swiss Teams 3:00 pm
499er Pairs 10:00 am & 3:00 pm

Friday , April 6

BAM Team Game 10:00 am
Stratified Pairs 3:00 pm
499er Pairs 10:00 am & 3:00 pm

Saturday , April 7

Two Session Stratified Pair Game 10:00 am & 3:00 pm
(Overall awards based on playing both sessions.
It is not required to play both sessions.)
499er Pairs 10:00 am & 3:00 pm

Sunday, April 8

Margaret Higgins Stratified Swiss 10:00 am & TBA
499er Pairs 10:00 am & TBA
499er pairs will be held with 3 table minimum

Card Fees
\$12/person/session, \$120/team Sunday Swiss (includes lunch)
Non or unpaid ACBL members add \$4
1 month membership for \$7.99

Stratifications
A: 2500+; B: 750-2500; C: 0-750 (averaging)

Tournament Co. Chairs:
Beth Gale 210-415-9390 / betomom@aol.com
Debbie Schweiss 210-862-9706 / debschweiss@satx.rr.com

Partnership Chair: Lynn Pierson
210-831-5301 / apierson72@gmail.com

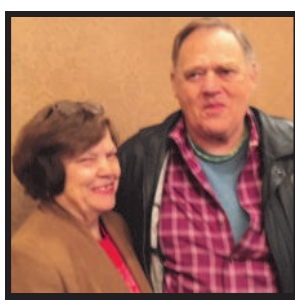
Director in Charge: Tom Marsh

- Bankler-Hank Eng 2. Richard Curtin-Kay Laird-Beverly Santos-Rebecca Brown
- Sunday Swiss Teams-3-7 Tables** 1 William Kibikas-James Ochsner-David Warner-Larry Smith 2. Stefanie Scott, Little Elm ; Kristen Ons-gard-Nancy Fellman- Elaine Wood,
- Sunday Swiss Teams-4-7 Tables** 1. N Tripode-Mary Lynn Genovesi-Nicolas Weisz-Carol Lahser 2. James Cuccia, Schertz ; Harold Schulz-Hal Spottswood-Evelyn Pitman
- Saturday AFT Pairs-14.0 Tables** ABC1. Mary Driesbock-William Whittle A2. George Watkins-Kendall Early B2. K Voges-Susan Ohm 2. Carolyn Parkins-Jack Cassidy
- Saturday AFT 499er Pairs-8.0 Tables** AB1. Jeanne Dawley-Evelyn Pitman AB2C1. Lois Kertesz-Annetta Hughson 2 S Hultquist-Bill Stillwell

SAN ANTONIO JANUARY SECTIONAL WINNERS



Thursday Morning Open Pairs A
Rosemary Kelley, Everette Lewis



Thursday Morning 499ers
Annie & Jon Pack



Thursday Morning Open Pairs
CJim Roff, Irene White



Thursday Morning Open Pairs
BTerry O'Brien, Anita Albert



Thursday Afternoon 499ers
Ken Davis, Cynthia Rivet



Thursday Afternoon 499ers
Bertha Benavides, Adriana Quintanilla



Friday Morning Open Pairs A&B
James Moody, Jerry Barrett



Friday Morning Pairs C
Koko Malley, Jeanne Dawley



Friday Afternoon Open Pairs A
Jerry Harrington, Bill Walker



Friday Evening Open Pairs A
Mary Anne Laire, Robert Tyler



Sunday Swiss Bkt 1
Bill Walker, Tom Trudeau,
Rosemary Kelley, Diane Olson



Saturday Evening Pairs A,B,C
William Whittle, Mary Driesbock



Friday Afternoon Open Pairs B
Kim Brinkman, David Ticen



Friday Morning Open Pairs A
Rosemary Kelley, Tom Trudeau



Friday Afternoon Open Pairs C
Debbie Schweiss, Bob Steidel



Friday Afternoon 499ers
Roberta Martinez, Monica Gutierrez



Saturday Morning Pairs B
Jo Neesvig, Helen McCrae



Sunday Swiss Bkt 4
NJ Tripode Nick Weisz
Mary Lynn Genovesi, Carol Lahser



Sunday Swiss Bkt 3
Bill Kibikas, Larry Smith
James Ochsner, David Warner



Sunday Swiss Bkt 2
Hank Eng, Harry Elliott
Brian Bankler, Brett Elliott

**Unit 174
Houston**

**Carol Ann
Wilson**



Unit News:

We have LOTS of news from our very successful **Lone Star Regional** held 1/29-2/4. First of all, we passed our goal, with a table count of 3,045.5! Thanks to all who came and supported our efforts. We know you are glad you did, because it was an excellent Regional—one of our best ever!

The speakers, **Gary King, Janice Seamon-Molson, Mike Passell, Carolyn Fox, Shawn Quinn, and Sylvia Shi & Daniel Korbel** were outstanding. They had good crowds and all who attended came away having learned something. We appreciated the visit from ACBL President **Jay Whipple** and enjoyed meeting him at the reception as well as the “town hall” he cheerfully and capably led.

Once more the lines were healthy for the popular Bracketed Swiss games, and on a few days there were 17 brackets! The Big Game, though, was the new BIG Texan Lease-Laird Championship Pair Game through four sessions over two days that awarded CASH prize money! The \$1,000 first place prize was won by **John Zilic** and **Tom Peters**, and the \$500 second place prize went to **Daniel Jackson** and **Mike Doyle**. Congrats to both winning pairs and to all who entered.

One of the amazing accomplishments during the Regional was by a Houston player who earned **186.69 MPs** during the week! **Timucin "Timo" Erkoc** came to America from Turkey in 2000 and moved to Houston in 2009. He hasn't played much at our clubs but plays mostly in big tournaments. A bridge pro who owned a club that remains today in Adana, Turkey, he played in the 1998 world championship in Ville de Lille, France. He has partnered with giants **Richard Pavlicek** and **Marshall Miles**. Watch for him and you will know you are in the presence of bridge greatness. We give a warm Houston "Welcome" to **Timo!**

A memorable and amazing feat was performed by another of our hard-working Unit 174 volunteers, **Sheryl Thomas**, who was in the right place at the right time. During a playing session, Conroe member **Otis Nolte** hit the floor with a heart attack and **Sheryl** was at the next table. She's recently retired from her career as a nurse-anesthetist, and she knew

just what to do. She immediately started CPR while his partner called 911. The medics arrived in a few minutes, got him to the hospital, and all reports were that he was doing well the next day! Bridge players are just the best, aren't they? Wahoo! (And **Sheryl** made Life Master at this tournament! Congrats!)

A well deserved honor went to **Gary King** as the 2018 Teacher of the Year! Yet, just as they say at the Oscars, it is a great accomplishment just to be nominated, so we want to pay homage to *all* the nominees: **Robert Buchanan** and **Don Reynolds** of Fort Worth; **Betsy DuBose** of Houston; **Pam LaShelle** of Austin; **Sharon Lux** of Dallas; **Gayle Moyer** of Austin; **Gerrie Owen** of Dallas; and **Sally Sassen** of Austin. We need—and really appreciate—all our teachers our there grooming and growing more players to attend our tournaments! Once again, our hospitality far surpassed the average regional. Tournament Co-chairs **Nancy Strohmer** and **Ken Hudson** and their fine teams went above and beyond in all categories. Novices and Intermediates can thank I/N Chair **Nancy Guthrie** and her great team of volunteers, and all of us appreciated the extra work of Hospitality Chair **Sam Khayatt** and her excellent team. **Sam** also made all those wonderful labels our unit is become famous for providing to attendees.

Finally, our very special Partnership Chair **Lauri Laufman** and her capable volunteers were busily helping put pairs and teams together all week. Quality photos from **Al Fortier** kept us all informed through the daily bulletins put together by the multi-talented **Ivette Chapman**. We are so fortunate in Unit 174, and we are happy to help everybody enjoy another fabulous Lone Star Regional. We hope you can join us on May 4-6 for our Election Sectional, again at the Marriott Westchase (\$89 rate cutoff 4/20).

New 70% Milestones: **Spring Branch Duplicate Club** reports this big game: **Chris Curran** and **Alan Zane**, 70.45% on 2/5. At **Bridge Club of Houston**, **Gail Carter** and **Betsy Birkett** had a 70.81% game on 12/29; **Bill Daniel** and **Kris Digre** had a 70.83% on 1/22; and **Marion Collins** and **Charles Collins** had a 71.29% game on 1/25. At **Clear Lake BC**, **Joe Giovannangeli** and **Rose Marie Cleveland** posted a whopping 75.86% game on 1/20 (look for that one in the *Bulletin*). And at **Westside Bridge Academy**, **Mary Pat Gentry** and **Ed Groner** had a 72.22% on 12/5, and **Georgiana Gates** and **Randall Lake** scored

70.15% on 12/28.
Congratulations to all for these achievements!

Pointers to Ponder: I want to report on **Gary King's** excellent talk before Monday afternoon's game at the Regional, titled "Three Things That Will Improve Your Bridge Game." See if they don't work for you: (1) Stop the "Convention Madness"! Be able to tell, in 15 seconds, WHY you play a convention, or stop using it. Instead, spend the energy on card play and avoiding errors, and have a 55% game. (2) Make a PLAN! Whether declarer or defender, count—and recount—your tricks, constantly. (3) No Friends at the Bridge Table. It's you and your partner against all others! Just do the normal thing and keep your emotions under control! (Now those are rules to live by in this game of bridge.)

Remembering Those Who Have Passed On: **Charles Miller** died on December 6; **Keith Everett**, President of BCofH, passed away on December 14; **WWI** and Korea Veteran **George Keiller** passed on December 27 (at age 93); **Martha Zilbermann** left us on January 3; **Bruce Slomka** passed away on January 5; services for **Ervie L. Freeman Jr.** were on January 17; and **Margaret Stultz** died on January 18. The Unit 174 bridge community will miss them very much, and our prayers are with their families and friends.

Till next time . . .

Lone Star Regional

Houston
Jan 29-Feb 04, 2018
1652 players 3046 tables

- 1 186.69 Timucin Erkoc, Richmond
- 2 186.69 Richard Pavlicek, FL
- 3 123.54 Phillip Grothus, Houston
- 4 117.24 Phil Clayton, Frisco
- 5 117.24 Ira Chorush, Houston
- 6 107.76 Mike Passell, Plano
- 7 107.63 Robert Hollman, CA
- 8 101.88 Geoff Hampson, Las Vegas
- 9 99.87 Bruce Ferguson, CA
- 10 92.52 Justin Lall, Charlotte NC
- 11 92.52 Joe Grue, New York NY
- 12 92.52 Gillian Minitier, New York NY
- 13 92.52 Brad Moss, Denver CO
- 14 77.29 Stephen Toplansky, Houston
- 15 77.29 Kenneth Schutze, Austin
- 16 73.93 Nagy Kamel, Plano
- 17 73.93 Mark Bumgardner, Dallas
- 18 73.83 Sam Lev, New York NY
- 19 73.83 Mustafa Cem Tokay, Roma
- 20 73.83 Alfredo Versace, Rome
- 21 70.85 Valentin Kovachev, NV
- 22 70.85 Carole Liss, San Rafael CA
- 23 67.58 Sylvia Shi, Las Vegas NV
- 24 67.58 Jane Armstrong, Sugar Land
- 25 67.58 Daniel Korbel, NV
- 26 67.58 Betty Starzec, Sugar Land

Monday Gold Rush Pairs-16.0 Ta-

bles B1. Rosalind Kokolis, Bellaire ; Gail Wood, Houston B2C1. Sue Alt, Austin ; Cynthia Rivet, Lakeway B3. Louis Bockman, League City ; Larry Cossey, Houston B4. Carol Ehrman, Houston ; Linda Brodie, Bellaire B5. Kenneth Hudson, Houston ; Kathleen Malcolmson, Richmond C2. David Petkus, Kemah ; Jeannie Stone, Houston C3. Gregory Keys-Linda Scarpelli, Midland C4. Rhonwyn Weissman, Rosenberg ; Steven Gordon, Richmond C5. Jeanne Wyatt-Anne Curry, Dallas
Monday Swiss Bracket 1-9 Tables 1. Dan Morse-John Zilic, Houston ; Nagy Kamel, Plano ; Mark Bumgardner, Dallas 2. Loretta Rivers, Monroe LA; Mike Cappelletti, Delray Beach FL; Dave Swarthout-Donna Swarthout, San Antonio
Monday Swiss Bracket 2-9 Tables 1 David Ticen, Victoria ; Kim Brinkman, Highland Vlg ; Paul Cuneo-Carmen Keys, Houston . 2. Debra Bellan, Sugar Land ; Marilyn Joyner-Nancy Reader-Anne Gorry, Houston
Monday Swiss Bracket 3-9 Tables 1. Susan Kaplan, Houston ; Alfred Fortier III, Katy ; Edward Yetter-Bonnie Kay Yetter, Garland 2/3 Ashok Shingavi-Edwin Zwald, Houston ; Azam Khan-Shyam Bhatia, Sugar Land 2/3 Carol Winograd, Bellaire ; Geri McKallip-Elisabeth Cabiness, Houston ; Yin Choo, Sugar Land
Monday Swiss Bracket 4-9 Tables 1. Donald Hixson-Virginia Hixson, Rapid City SD; Harold Fellerman-Bonnie Fellerman, Mission 2. Christine Matus-Pieter Vanbennekem, Vero Beach FL; Robert Echols, Lufkin ; Carl Hartness, Plymouth MN
Monday Swiss Bracket 5-9 Tables 1. Linda Briggs-Robert Kacher, Jr-Tim Stelly, Beaumont ; Carolyn Worsham, Port Arthur 2. Gordon Yee, Stafford ; Linda Albright, Sugar Land ; F Adrian Johnston-Carol Wilson, Houston
Monday Swiss Bracket 6-9 Tables 1. Abid Mumtaz-Victor Tong-Chie Yen, Houston ; Hau-Ran Wang, Sugar Land 2. Jeff Armstrong-C Paul Shubert-Judith Busby-Mary Jane Kinnebrew
Monday Swiss Bracket 7-9 Table 1/2 Ronald Pare-Ann Pare, The Woodlands ; Sam Khayatt, Kingwood ; Frederick Gregory, Houston 1/2 Tera Boyd, Bacliff ; Evvie Gilbert, Seabrook ; Terri Tedford, Miles ; Carol Diminnie, San Angelo
Monday Swiss Bracket 8-10 Tables 1. Edward Trapp-Carolyn Trapp, Mandeville LA; Loretta Mercola, Madisonville LA; Allan Chernov, Irving 2. Gayle Longmire-Edna Earle Mattei-Constance Grant-Titia Smulders, Houston
Monday-Tuesday KO Brkt 1-6 Tables 1. Jim Mahaffey, Winter Park FL; Alfredo Versace, Rome Italy; Mustafa Cem Tokay, Roma 00197 Italy; Daniel Lev-Sam Lev, New York NY 2. Margaret Hart, Baton Rouge LA; Howard Parker III, Clements CA; Marie-France Benoit, Gatineau QC; Ron Ashbacher, Saint Louis MO; Jay Cohodes, Sunrise FL

Tuesday Swiss Bracket 1-9 Tables 1/2 Robert Hollman, Santa Barbara CA; Bruce Ferguson, Palm Springs CA; Mike Passell, Plano ; Geoff Hampson, Las Vegas NV 1/2 Sudhakar Divakaruni, Scottsdale AZ; Venkatrao Koneru-Greg Hinze, San Antonio ; David Grainger, Etobicoke ON

Tuesday Swiss Bracket 2-9 Tables 1. Jolie Hess-Sandra Clark-David Henke, Houston ; Linda Sutton, Conroe 2. Oren Moore, Missouri City ; Ralda St Pierre, Houston ; Daniel Jackson, Spring ; Bill McCarty, San Antonio

Tuesday Swiss Bracket 3-9 Tables 1. Abid Mumtaz-Charles Markowitz-Chuck Gillis-Victor Tong, Houston 2. David Ticen, Victoria ; Kim Brinkman, Highland Vlg ; Paul Cuneo-Carmen Keys, Houston

Tuesday Swiss Bracket 4-9 Tables 1. Elton Lipnick-Shih-Ming Yang-Shou Chao-Ming Su, Houston 2. David Glandorf-James Ochsner, Houston ; William Kibikas-James Frick, Friendswood

Tuesday Swiss Bracket 5-9 Tables 1. Anita Goldman, Melville NY; Judith Ensor, Seabrook ; Sheila Puz, Kitchener ON; Phillip Yorston, Abiquiu NM 2. Susan Kaplan, Houston ; Alfred Fortier III, Katy ; Edward Yetter-Bonnie Kay Yetter, Garland

Tuesday Swiss Bracket 6-9 Tables 1. Eric Sandberg-Janice Sandberg-Raleigh Williamson-Harold Cope-land, Houston 8.09 2 Jerry Barrett-Gary Anderson, Austin ; Sharon Dameron, Cedar Park ; Robert L McClendon, Ponte Vedra FL

Tuesday Swiss Bracket 7-9 Tables 1. Teri Collier, Brighton MI; Joyce Gore, Missouri City ; Chloe Ella Fackenthal-Yvonne Strangmeyer, Houston 2. Charlotte Connelly, Tampa FL; Keith Ritter, Houston ; Linda Brending-William Brending, Katy

Tuesday Swiss Bracket 8-9 Tables 1, Andrea Williams-Marjorie Miller, San Antonio ; Linda Adamchik, Beaumont ; Patricia Bell, Silsbee 2, Carolyn Labouliere, Seabrook ; Robert Burridge-Marsha Doyle-Bob Dowlen, Houston

Tuesday Swiss Bracket 9-9 Tables 1, Carolyn Campbell-Laura McWilliams-Susan Belding-Charlotte Johns, Houston 2, Charles Dalton-Lotte Optekamp-Beverley Linskey, Houston ; Erika Magid, Bellaire

Tuesday Swiss Bracket 10-9 Tables 1, Janet Smith-Frances Simmons-Yvonne Serbin, Kingwood ; Carol Krug, Houston 2, Carolyn Wedel-Tom Nobis-Betty Schell, Houston ; Robert Crawford, Katy

Tuesday Swiss Bracket 11-9 Tables 1, Connie Van Patter-Karen Roland, McKinney ; Sharon Ward-Martha Ward, Plano 2, Lynn Gamblin-Suzanne Noerager-Lisa Zummo, Houston ; Cheryl Mathias, Cypress

Tuesday Swiss Bracket 12-9 Tables 1, Mary Cris Emmons-George Nelson-Mary Nelson-Connie Conover,

Unit 174 Election Sectional



May 4-6, 2018
Houston Westchase Marriott
 2900 Briarpark, Houston, TX 77042
 713-978-7400 888-236-2427
Bridge Rate \$89 plus tax, Cutoff date 4/20

Tournament Chairs
Lauri Laufman
 281-235-8777; llaufman@texas2211.com
Nancy Guthrie
 281-414-3935; nguthrie_houston1@comcast.net

Partnership
Carmen Keys
 281-444-7743; carmen.keys@att.net

Hospitality
Connie Conover and Cris Emmons
Intermediate/Newcomer
Laura Chandler

Entry Fees

Friday & Saturday	\$12
Sunday	\$15

\$4 more for non and unpaid members
**Lunch Voucher will be Included on Sunday*

Friday, May 4

10:00 am
 Stratified Open Pairs (Session 1 of 2)
 Stratified Side Pairs (One Session)
 Stratified 299r Pairs
 Stratified 49r Pairs
 0-5 Pairs
 Bracketed Swiss (Session 1 of 2)

2:30 pm
 Stratified Open Pairs (Session 2 of 2)
 Stratified Side Pairs
 Stratified 299r Pairs
 Stratified 49r Pairs
 Bracketed Swiss (Session 2 of 2)

Saturday, May 5

10:00 am
 Stratified Open Pairs (Session 1 of 2)
 Stratified Side Pairs (One Session)
 Stratified 299r Pairs
 Stratified 49r Pairs
 0-5 Pairs
 Bracketed Swiss (Session 1 of 2)

2:30 pm
 Stratified Open Pairs (Session 2 of 2)
 Stratified Side Pairs (One Session)
 Stratified 299r Pairs
 Stratified 49r Pairs
 Bracketed Swiss (Session 2 of 2)

Sunday, May 6

10:00 am & 2:30 pm
 Stratified Swiss (double session)
 Stratified Open Pairs (double session)
 Stratified Side Pairs (single sessions)
 Stratified 299r Pairs (single sessions)

District 16 Grand National Teams
 Flight B Qualifying Round 1 starts Friday 730pm
 Flights A & C Qualifiers start Saturday at 10am
 See GNT Flyer for Full Schedule

Lectures
 Friday and Saturday at 2:00 pm

Stratification

A:3000+	B:750-3000	C:0-750
A:200-300	B:100-200	C:0-100
A:20-50	B:5-20	C:0-5

Bracketed Swiss
 Brackets of 7-9 teams by total MP holding
Team or pair average is used for all stratified events.
Strats may vary at the Director's discretion

Annual Meeting
 The Unit 174 Annual Meeting will be held between sessions on Sunday. Polls will be open for the BOD elections an hour before each session on Friday, Saturday and on Sunday morning.

Unit 174 Awards
 The 2017 Helen Shanbrom Ace of Clubs and Mini-McKenney Awards will be presented during the Annual Meeting on Sunday.

Houston Unit 174 to Hold Board Election May 4-6, 2018

The members of Unit 174, whose participating clubs include Baytown, Bryan/College Station, Clear Lake, Conroe, Galveston, Houston, Kingwood, Lake Jackson, Livingston, Pasadena, Spring, Stafford, and Sugar Land, will have an opportunity to vote for three members of the Board of Directors May 4-6, 2018, during the Election Sectional at the Marriott Westchase. The three newly elected members will join Nancy Guthrie, David Henke, Ken Hudson, Daniel Jackson, Lauri Laufman, and Bill Riley to complete the full nine-member Board. Karen Nimmons, Chairman of this year's Nominating Committee, consisting of Tom Hogle, Pat Levy, Shawn Quinn and Rick Stell, urges you to vote, either in person, early online, or by absentee ballot. For a ballot to be counted, a member must vote for exactly three candidates, which can include write in candidates. In person voting will take place one hour before each session of the tournament on Friday, Saturday and Sunday morning. To vote early online, go to www.aclubunit174.org, place your mouse over "MyUnit174" on the right side of the menu bar, click on "BOD Election" and follow the instructions. Online voting will become available on April 9 and will end on May 1. To vote absentee, follow the instructions below. Winners will be announced prior to the second session on Sunday, May 6.

Jack LaVigne



I was introduced to bridge during my senior year of college and have been fascinated by the game ever since. I have served on the unit board in Midland, Texas, and also on the Ethics Committee in Houston.

During my thirty-nine years with Schlumberger I earned a reputation for being dedicated, reliable and able to work well in a team environment to achieve common goals. Now retired I would like to take an active part in helping keep this great game alive so I am running for the Board. Your vote would be appreciated.

Carol Lombardino



My first bridge experience was at Bridge & Games Studio (now called Westside Bridge Academy) on March 11, 2005. I had never played bridge before in my life. I was encouraged by my late sister-in-law, Sarah Webster, and I joined ACBL on that same day! I never knew it would open such a huge wonderful world for me, but it did!

I am a Native Texan (my great grandfather was at the Battle of San Jacinto, and a first cousin died defending the Alamo). I have a BA from the University of Houston and have worked as a consultant since leaving my job as Controller for GE Power Systems in 2002. Hobbies include grandkids, bridge, yoga, fishing, and traveling.

Kathleen Malcolmson



Duplicate bridge and the folks who play it have enriched my life and I'd like to return the favor by serving the Houston area bridge community. I will use my creativity, interpersonal skills and enthusiasm to benefit Unit 174. My profession has been a fine woodworker, designing and making puzzle boxes and mechanical puzzles to sell to collectors around the world since 1994. My interactions with people from other countries, cultures and from just across the bridge table give me the experience to help keep Houston bridge strong and growing.

Ronnie Martin



I was born in Jacksonville, Texas but moved to the Houston area at a very young age. I graduated from North Texas in 1968 and was a teacher-coach in my first career. Later, I worked for Gerald D. Hines Interests as a leasing representative and retired in 2012. My home club is Clear Lake Bridge Club where I began taking classes in 2015. I have enjoyed the challenge of trying to learn the game and still have a long way to go. I think the thing I can bring to the Unit 174 Board of Directors is energy. I am currently the Intermediate/Newcomer representative to Clear Lake Bridge Club and I like to get involved. And, my plan as a board member would be to listen to the membership.

Paul Nimmons



I graduated from Austin High School in Houston, Texas in 1962. I graduated from Rice University in 1966. I graduated from the University of Houston College of Law in 1969.

I have been a member of unit 174 since 1990. I would be proud to serve as a Director.

Sheryl Thomas



I am a native Houstonian and a graduate of Prairie View A&M and the University of Detroit-Mercy earning a BS in Nursing and a MS in Anesthesiology.

I practiced at M.D. Anderson first as a nurse and then as a Certified Registered Nurse Anesthetist, retiring in 2010.

Just about everyone on my maternal side loved to play cards and board games, in fact, I literally grew up at the card table!! I found bridge about 5 years ago and it was love at my first play of the hand!!

I served as the Intermediate/Novice Coordinator for about 2 years and I loved it. If elected, I will do everything I can to serve the members of Unit 174.

Absentee Voting Procedure

Any member may vote by Absentee Ballot. To vote absentee, a member must contact the Election Judges by U.S. mail, e-mail, or telephone requesting an Official Ballot. If the voter is a member in good standing, an Official Ballot will be sent to the voter at the voter's address of record, in a small unsealed envelope. Upon receiving the Official Ballot, the voter should complete the ballot, seal it inside the small envelope provided, and place the small sealed envelope inside another envelope addressed to the Election Judges. The back flap of the outside envelope must be signed by the voter. If no signature is provided, the ballot will not be counted. The Absentee Ballot must be postmarked no later than April 28 and must be received by the Election Judges no later than May 1 to be counted. The Election Judges are Danny and Brigitte Sandifer. Correspondence should be addressed to Brigitte Sandifer: 507 Rozelle Ave. Sugar Land, TX 77498; sandiferdb@gmail.com; 281-494-1464.

Houston 2, Carol Ramberg, Fair Oaks Ranch ; Roxanne King, Boerne ; Goldie Rose, Houston ; Jeanne Dawley, San Antonio

Tuesday Swiss Bracket 13-9 Tables 1, Cindy Hillman-Julie Stewart, Tomball ; Tonya McNabb-Bob Mendel, Houston 2, Ede Weiner-Bruce Weiner-Mary Jane Kinnebrew-Judith Busby, Houston

Tuesday Swiss Bracket 14-9 Tables 1, Rick Margerison-Leah Margerison, Dallas ; Sue Alt, Austin ; Cynthia Rivet, Lakeway 2, Carol Jenkinson-Jean Jardine, Montgomery ; Jeane Crumpler, Conroe ; Cheryl Benash, Spring

Tuesday Swiss Bracket 15-9 Tables 1, Robert Caldwell III-Bill Kalmbach -J Patrick Finnigan-W Kenneth Davis, Austin 2, Gayle Longmire-Edna Earle Mattei-Constance Grant-Titia Smulders, Houston

Tuesday Swiss Bracket 16-12 Tables 1, Dana Sun-Peter Naimoli-Matt Stephans-David Staab, Austin 2, Paul Shack-Joan Shack-Kenneth Hudson, Houston ; Joseph Nichols, Seabrook ,

Tuesday Open Pairs-20.0 Tables / Based on 85 Tables A1.. Richard Pavlicek, Fort Lauderdale FL; Timucin Erkoc, Richmond A2. Rosemary Kelley, San Antonio ; Phillip Grothus, Houston A3. Norman Beck-Joan Jackson, Dallas A4X1. Nancy Boothe-Pat McMullin, Houston X5. Shawn Quinn-Joe Quinn, Sugar Land 2 William Garrard-Donna Garrard, Irving X4. Brenda Solovitz-Lynnda Paukune, Houston X5. Karen Nimmons-Paul Nimmons, Houston

Tuesday Mid-flight Pairs-13.0 Tables / Based on 53 Tables BY1. Audley Karrasch-Marilyn Joyner, Houston B2Y1. Carl Hartness, Plymouth MN; Robert Echols, Lufkin B3. Jean Blilie, Kerrville ; Eugene Lux, Fredericksburg B4Y2. A Ansari, Austin ; Bharat Shrestha, Katy B5. Don Morgan, Houston ; Youssef Youssef, Katy Y3. Martyn Cooper, Katy ; Scott Needham, Boulder CO Y4. Pieter Vanbennekom-Christine Matus, Vero Beach FL Y5. Nancy Shomette-Sheila Harrison, Houston

Tuesday Gold Rush Pairs-32.0 Tables C1. Martha Dougherty-Judith Earle, Houston C2. Jim Goodale-Frank Mitchum, Houston C3 Linda Brodie, Bellaire ; Carol Ehrman, Houston C4D1. Judith Rebmann, Friendswood ; Terry McGarrity, Manvel C5D2. Anita Everhart-John Everhart, Dallas D3. Jane Herman-William Herman, Effingham IL D4. Christine Mitchell, Katy ; Susan Ross, Ruidoso NM D5. Sheila Robinson, Toronto ON; Phyllis Robinson, Mulmur ON

Wednesday Open Pairs-26.0 Tables / Based on 66 Tables A1. Richard Pavlicek, Fort Lauderdale FL; Timucin Erkoc, Richmond A2X1. Dale Crumbaugh, Houston ; Kris Digre, Conroe A3, Jan Galey-Dana Hastings, Baton Rouge LA A4X2Y1. Kitty Wong, Pearland ; Shih-Ming Yang, Houston A5. Norman Beck, Dallas ; Ron La Cour, Georgetown X3, Richard Wilson-Sally Sekac, Houston 57 X5. George Wieland, Houston ; Paul Stereff, Pasadena Y2. Marshal Iehl, Waterloo IA; Lucilla Edwards, Pahrump NV Y3. Stefanie Scott, Little Elm ; Kristen Onsgard, Dallas T4. Bill Kiehnhoff, Sugar Land ; David Crooks, Houston Y5. Robert Young-Edward Grant, Abilene

Wednesday Gold Rush Pairs-32.5 Tables C1. Robert Craig-Coleman Driver, San Antonio C2. David Durand, Houston ; Jim McCormick, Blk Butte Ranch OR C3D2. Sue Alt, Austin ; Cynthia Rivet, Lakeway C4. Julian Silverblatt, Houston ; David Mitchell, Deer Park C5. Linda Brodie, Bellaire ; Carol Ehrman, Houston D3. Barbara Rodriguez, Volente ; Sally Disanza, Austin D4. Christine Mitchell, Katy ; Susan Ross, Ruidoso NM D5. Mike Robinson, Odessa ; Scott Koehler

Wednesday Swiss Bracket 1-9 Tables 1. Jim Mahaffey, Winter Park FL; Alfredo Versace, Rome Italy; Mustafa Cem Tokay, Roma 00197 Italy; Sam Lev-Daniel Lev, New York NY 2. Brad Moss, Denver CO; Jo Grue-Gillian Minter, New York NY; Justin Lall, Charlotte NC

Wednesday Swiss Bracket 2-9 Tables 1. Ned Irving, Hot Springs Vlg

AR; Jack Lacy, Lago Vista ; Sally Clark, Montrose AL; Donald Rumelhart, Ann Arbor MI 2. Jack LaVigne-Geoff Booth-Barbara LaVigne-Robert Sandfield, Houston

Wednesday Swiss Bracket 3-9 Tables 1. David Dyer-Raleigh Williamson-Harold Copeland-Ralph Herz, Houston 2. Robert Arnett-Sam Dodson, Houston ; Troy Carr, Cypress ; Donna Sparks, Fulshear

Wednesday Swiss Bracket 4-9 Tables 1. Janelle Frusha, Conroe ; Mavis Warren-Lessley Cain, Montgomery ; Frances Robbins, The Woodlands 2. Lauri Laufman-Nancy Strohmmer-Hans Strohmmer, Houston ; Carol Lombardino, Tomball

Wednesday Swiss Bracket 5-9 Tables 1. Steve Vaughn, Kingwood ; Michael Novack, Humble ; Jill Spence, The Woodlands ; Joseph Volanski, Spring 2. Edwin Zwald-Ashok Shingavi, Houston ; Shyam Bhatia-Azam Khan, Sugar Land

Wednesday Swiss Bracket 6-9 Tables 1. Gary Winston-Shari Winston-Paul Cuneo-Carmen Keys, Houston 2. Chris Curran-Mary Lou Fowler, Houston ; Jessie Schoppe-Victoria Ornowski, Katy

Wednesday Swiss Bracket 7-9 Tables 1. Martyn Cooper, Katy ; Scott Needham, Boulder CO; Ann Parker-Sheri Wolkenstein, Dallas 2. Kenneth McAllister-Phyllis Kuchta, Pearland ; Peggy Naughton-Bob Naughton, Houston

Wednesday Swiss Bracket 8-9 Tables 1. Mike Goldberg, Houston ; Tera Boyd, Bacliff ; Mack Meigs, Baytown ; Evvie Gilbert, Seabrook 2. Sandra McMinn-Rhonda Bryant-Judith Smith, Houston ; Debra Belan, Sugar Land

Wednesday Swiss Bracket 9-9 Tables 1. David Collins-Sunny Laird, Horseshoe Bay ; Jeanette Hughes, Marble Falls ; Esther Ellis, Kingsland 2. M Owen Lasker, Dewey AZ; Barbara Bermann, Aventura FL; Carl Hartness-Janice Hartness, Plymouth MN

Wednesday Swiss Bracket 10-9 Tables 1. Steven Bell, Cypress ; Courtney Coffman, The Woodlands ; Sam Khayatt, Kingwood ; Frederick Gregory, Houston 2. Linda McReynolds-Ronald Schulman-Carol Jewett-Mary Cris Emmons, Houston

Wednesday Swiss Bracket 11-9 Tables 1. Carolyn Wedel-Tom Nobis-Betty Schell, Houston ; Robert Crawford, Katy 2. Bruce Weiner-Ede Weiner-Kyle Lueders-Mary Jane Kinnebrew, Houston

Wednesday Swiss Bracket 12-9 Tables 1. Rick Margerison-Leah Margerison, Dallas ; Karen Roland-Connie Van Patter, McKinney 2. Ann Gibbs-Jane Joplin-Beverly Fanarof-Marilyn Leiman, Houston

Wednesday Swiss Bracket 13-9 Tables 1. William Freeman-David Friedrichs-Dee Daigle, Lafayette LA; Jane Ardoin, Eunice LA 2. Patricia Webb-Laurene Jacob, Austin ; Richard Wright-Diane Wright, Minneapolis MN

Wednesday Swiss Bracket 14-9 Tables 1. Hillel Weinbaum-Barbara Glass, Sugar Land ; Elizabeth Jackson, Houston ; Diane Kaminsky, Bellaire 2. Cindy Hillman-Julie Stewart, Tomball ; Tonya McNabb-Bob Mendel, Houston

Wednesday Swiss Bracket 15-9 Tables 1. Robert Caldwell III-Bill Kalmbach-J Patrick Finnigan, Austin ; Jo Anne Knodel, Pearland 2. Gayle Longmire-Edna Earle Mattei-Joann Suthers-Titia Smulders, Houston

Wednesday Swiss Bracket 16-9 Tables 1. Marilyn Slaughter, Missouri City ; Ethel Black-Julia Thompson-Myra Marsh, Houston 2. Barbara Giddens, Pearland ; Shirley Bloom-Charlotte Shamis-Joseph Tse, Houston

Wednesday Swiss Bracket 17-11 Tables 1. Barbara Fagan-Phyllis Maddox-Jane Vansanten, Houston ; James Bettis, Bellaire 2. Cameron Lawton-Ann Dahn-Phyllis Dillard, Spring ; Jane Lawson, The Woodlands

Thursday Open Pairs-27.0 Tables / Based on 67 Tables A1. Carolyne Fox, Manvel ; Phillip Grothus, Houston A2. Rosemary Kelley-Bill McCarty, San Antonio A3X1. Pat McMullin-Chuck Gillis, Houston A4X2Y1. John Moore-Roxann

Swenson, Austin A5. Jan Galey-Dana Hastings, Baton Rouge LA X3. Bobbi Kauffman-Tom Hogle, Houston X4. Brenda Solovitz-Mark Howard, Houston X5. Martha Young-Florence Beard, Dallas Y2. Audley Karrasch-Frank Mitchum, Houston Y3. H Lane Jr, Spofford NH; Arthur Giovannangeli, Houston Y4. Irene Parker, Austin ; June Eddingston, Beaumont Y5. Bill Parrish-Lenora Parrish, Woodway

Wed-Thu Championship Pair-4.0 Tables / Based on 7 Tables 1. John Zilic, Houston ; Thomas Peters, Grapeland 2. Daniel Jackson, Spring ; Mike Doyle, Katy Y3. Charlene Sands, Pflugerville ; Virgil Massey, Driftwood 4. Brett Elliott-Harry Elliott, Cypress 5. William Garrard-Donna Garrard, Irving 80.76

Thursday Gold Rush Pairs-31.0 Tables b1. Dee Daigle, Lafayette LA; Jane Ardoin, Eunice LA B2. Martha Ward-Sharon Ward, Plano b3C1. Sara Rowe-Marion Beeler, Rockport B4C2. Barbara Abney-Sandra Dickinson, Kingwood B5 Karen Jennings, Lafayette LA; James Whiteside, Midland MI C3. Jason Mook, Shreveport LA; Tommy Mook, Shreveport L C4, Phyllis Dillard-Cameron Lawton, Spring C5. Eugene Goldgar-Debbie Goldgar, Houston 56.25%

Thursday Swiss Bracket 1-9 Tables 1. Richard Pavlicek, Fort Lauderdale FL; Timucin Erkoc, Richmond ; Ira Chorush, Houston ; Phil Clayton, Frisco 2. Joe Grue-Gillian Minter, New York NY; Justin Lall, Charlotte NC; Brad Moss, Denver CO

Thursday Swiss Bracket 2-9 Tables 1. Stephen Kornegay-Nancy Kornegay, N Richland Hls ; Mark Bumgardner, Dallas ; Nagy Kamel, Plano 2. Daniel Korbel-Sylvia Shi, Las Vegas NV; Betty Starzec-Jane Armstrong, Sugar Land

Thursday Swiss Bracket 3-9 Tables 1. James La Fountain, Temple ; George Fillis-Karen Fillis, San Antonio ; Richard Ware, New Braunfels 2. Bill Riley-Nancy Riley, Kingwood ; Eleanor Sherwyn-Donald Varvel, Corpus Christi

Thursday Swiss Bracket 4-9 Tables 1. Howard Huynh, Lubbock ; Sharon Dameron, Cedar Park ; Robert L McClendon, Ponte Vedra FL; Joe Black, Austin 2. Hugh Humphries-Kay Humphries, Bellaire ; Jack Stone, Sugar Land ; Ed Harper, Houston

Thursday Swiss Bracket 5-9 Tables 1, Anita Albert-Stan Pushkarsky-Sandy Potts, Austin ; Terri O'Brien, Leander 2, Sheri Wolkenstein-Ann Parker, Dallas ; Norman Gautier-Joyce Gautier, The Woodlands

Thursday Swiss Bracket 6-9 Tables 1, Kristen Onsgard, Dallas ; Stefanie Scott, Little Elm ; Paul Cuneo-Carmen Keys, Houston 2, Brian Gelles-Janet Gelles, Fairview ; Edward Yetter-Bonnie Kay Yetter

Thursday Swiss Bracket 7-9 Tables 1, Steven Bell, Cypress ; Courtney Coffman, The Woodlands ; Shou Chao-Shih-Ming Yang, Houston 2, Carolyn Labouliere, Seabrook ; Robert Burrbridge-James Ochsner-Bob Dowlen, Houston

Thursday Swiss Bracket 8-9 Tables 1, Jack Dean-Jeanette Dean-David Glandorf, Houston ; James Frick, Friendswood 2. Charlotte Connelly, Tampa FL; Keith Ritter, Houston ; William Brending-Linda Brending, Katy

Thursday Swiss Bracket 9-9 Tables 1, Karen Fireman-Judi Sulzbach-Judy Gibson, The Woodlands ; Mary McDonald, Willis 2, Anna Seal-Leah McCarthy, McKinney ; Susan Flick, Lucas ; Donna Rasmussen, Broomfield CO

Thursday Swiss Bracket 10-9 Tables 1, Barbara Morgan-Mary Rita de Hoyos-Hazel Medellin, New Braunfels ; Linda Banks, San Marcos 2, Roxanne King, Boerne ; Lynne Anderson-Goldie Rose, Houston ; Walter Freitag, Georgetown

Thursday Swiss Bracket 11-9 Tables 1, Carolyn Wedel-Tom Nobis-Betty Schell, Houston ; Robert Crawford, Katy 2, Norma Porter, Houston ; Cathy Chen, Sugar Land ; Shyue Yuan Wu-Sophie Chen, Missouri City

Thursday Swiss Bracket 12-9 Tables 1, Rosalind Kokolis, Bellaire ; Jane Boozalis-Sandra McMinn, Houston ; Jo Anne Knodel, Pearland

2, Judy Carter, Rosenberg ; Rekha Parekh-Glenda Faragher, Sugar Land ; Steven Gordon, Richmond

Thursday Swiss Bracket 13-9 Tables 1, Stephen Banks-Carol Banks-Suzanne Noerager-Lynn Gamblin, Houston 2, Gigi Matthews-Kathleen Vogel, Metairie LA; Cathy Alford, New Orleans LA; Martha England, Mill Valley CA

Thursday Swiss Bracket 14-9 Tables 1, Meg Putman-Paul Putman, Austin ; Tim Jones-Edward Winthrop, Overland Park KS 2, Joseph Anderson-Philippa Anderson-Patricia Ducayet-Edwin Ducayet Jr, Dallas

Thursday Swiss Bracket 15-9 Tables 1, Mary Hanni-Morris Place Jr-Betty Norton, Mandeville LA; Warren Gambino, Covington LA 2, Odis Nolte, Conroe ; Carol McCord, Hockley ; Jim Nicas, Spring ; James Kelly, Houston

Thursday Swiss Bracket 16-9 Tables 1, Joyce Anderson, Fort Worth ; Mary Ellen Little, Trophy Club ; Gwendolyn Faherty-Carmond Fitzgerald, Granbury 2, Sheryl Thompson, Metairie LA; Linda Conner-Molly Silvia-Elizabeth Cordes, New Orleans LA

Thursday Swiss Bracket 17-13 Tables 1, Susan Lipsey-Louise Hargon-Walter Rudd-Kathryn Tillson, Baton Rouge LA 2, Julialee O'Shea-Elaine Brill-Carmen Nash-Roslyn Wallace, Houston

Friday Open Pairs-15.5 Tables / Based on 70 Tables A1. Kenneth Schutze, Austin ; Stephen Toplansky, Houston A2. Michael Huston, Joplin MO; Kerr Godfrey, Houston A3. Vic Sowers, Houston ; George Fox, Manvel A4. Virginia Zilic-Georgiana Gates, Houston 5 1 Jonathan Ernest, Lindale ; Charles Newton Jr, Rosenberg X2, Harry Elliott, Cypress ; Christoph Eick, Houston A3. Louis Sachar-Robert Donathan, Austin A4. Brigitte Sandifer, Sugar Land ; Kitty Wong, Pearland A5. Donna Garrard-William Garrard, Irving

Friday Mid-Flight Pairs-13.5 Tables / Based on 54 Tables BY1. Thomas Smith-James Moody, Austin BY2. Robert Reichek-Chris Kollenberg, Houston BY3. Tom Hogle-Mary Watters, Houston BY4. Dee Daigle, Lafayette LA; Jane Ardoin, Eunice LA BY5. Robert Burton-Dolline Burton, Georgetown

Friday Gold Rush Pairs-27.0 Tables C1. Cheryl Smith-Charles Dalton, Houston C2D1. Rhonwyn Weissman, Rosenberg ; Steven Gordon, Richmond C3D2. John Gurasich-Linda Gurasich, Austin C4. Kenneth Hudson-Lauri Laufman, Houston C5D3. Nancy Guthrie, Houston ; David Petkus, Kemah D4. Jeanie Connell-Sharon Gerson, Houston D5. Zach Townley-Smith-Bob Townley-Smith, Lumberton

Friday Swiss Bracket 1-9 Tables 1. Richard Pavlicek, Fort Lauderdale FL; Timucin Erkoc, Richmond ; Ira Chorush, Houston ; Phil Clayton, Frisco 2/3 Robert Hollman, Santa Barbara CA; Bruce Ferguson, Palm Springs CA; Mike Passell, Plano ; Geoff Hampson, Las Vegas NV 2/3 Paul Street, Delray Beach FL; Bob Hamman, Dallas ; Barry Schaffer, Frisco ; Colby Vernay, Lacon IL

Friday Swiss Bracket 2-9 Tables 1. John Schwartz, Plano ; James Thurtell, Dallas ; J Gittelman-Gary King, Houston 2. Margaret Hart, Baton Rouge LA; Howard Parker III, Clements CA; Ron Ashbacher, Saint Louis MO; Jay Cohodes, Sunrise FL

Friday Swiss Bracket 3-9 Tables 1. James Breihan-Anton (Tony) Haddad, Houston ; Joe Yassi, Etobicoke ON; Marilyn Adams, Beaumont ; Jo Smith, Abilene 2. Daniel Jackson, Spring ; Shatrugna Prasad, Missouri City ; Syed R Naqvi, Richmond ; Romeo Bodrogi-Podoaba, Houston

Friday Swiss Bracket 4-9 Tables 1. Howard Huynh, Lubbock ; Wiley McMinn III-Terry Richardson-Joe Black, Austin 2/3 Lucy Terrill-Dolores Aquino-Elizabeth Ghrst, Houston ; Sharon Campbell, Richmond

Friday Swiss Bracket 5-9 Tables 1. Steven Bell, Cypress ; Courtney Coffman, The Woodlands ; Steve Vaughn, Kingwood ; Rick Stell, Houston 2. Linda Brending-William Brending, Katy ; Paul Cuneo-Carmen

Keys, Houston

Friday Swiss Bracket 6-9 Tables 1 Abid Mumtaz-Elton Lipnick-Victor Tong-Ming Su, Houston 99.00 8.84 2. Susan Kaplan, Houston ; Alfred Fortier III, Katy ; Bonnie Kay Yetter-Edward Yetter, Garland

Friday Swiss Bracket 7-9 Tables 1 Pam Barksdale-Sheila Harrison-Barbara Harberg-Robin Ladin, Houston 2. William Daniel III-Christy .Morrissey, Spring ; Beverley Cheatham, Houston ; Donna Frederick, The Woodlands

Friday Swiss Bracket 8-9 Tables 1. Val Grady-Dale Grady-Irene Baker, Pearland ; Rodney McCullough, La Feria 2. Sharon Dameron, Cedar Park ; Robert L McClendon, Ponte Vedra FL; Jerry Barrett-Gary Anderson, Austin

Friday Swiss Bracket 9-9 Tables 1. Jeremy Lewis, Lexington NC; Samuil St Ivanov, Las Vegas NV; Chuck Gillis-Aleksandr Adelman, Houston ; Marie-France Benoit, Gatineau QC 2. Edwin Zwald-Joe Boutros-John Heath-Jeff Nuttall, Houston

Friday Swiss Bracket 10-9 Tables 1. Frank Durante, Addison ; Nancy Latner-Carol Casey-Rosalind Smith, Dallas 2/3 Donald Hixson-Virginia Hixson, Rapid City SD; Harold Fellerman-Bonnie Fellerman, Mission 2/3 Kris Digre, Conroe ; Bob Matlock, Spring ; Linda Coapland, Houston ; Susan Thom, The Woodlands

Friday Swiss Bracket 11-9 Tables 1. Rita Wiegenstein-William McIndoo-Tom Banet-Jo McDaniel, Georgetown 2. Genie Hayden-Betty Jean Reeves-Norma Becker, Missouri City ; Betty Schell, Houston

Friday Swiss Bracket 12-9 Tables 1. Norma Porter, Houston ; Cathy Chen, Sugar Land ; Sophie Chen-Shyue Yuan Wu, Missouri City 2. Christopher Tsai-Liane Tsai-Robert Holliday, Plano ; Ann Parker, Dallas

Friday Swiss Bracket 13-9 Tables 1. David Wicks-Linda McReynolds-Connie Conover-Mary Cris Emmons, Houston 2. James Simmons-Frances Simmons-Sandra Dickinson-Barbara Abney, Kingwood

Friday Swiss Bracket 14-9 Tables 1. Beverley Linsky, Houston ; Connie Montgomery, Katy ; Connie Burnett, Dallas ; Ann Marie Ross, Richmond 2. Richard Clements-Barbara Clements-Jo Dee Bowen-Melinda Simmen, Austin

Friday Swiss Bracket 15-9 Tables 1. Stephen Banks-Carol Banks-Lynn Gamblin-Suzanne Noerager, Houston 2. Linda Windham-Michael Windham, Cypress ; Ronald Pare-Ann Pare, The Woodlands

Friday Swiss Bracket 16-9 Tables 1. Mark Anderson, Cedar Park ; Robert Tyler-Tracy Bruce-J Patrick Finnigan, Austin 2/3 Andrew Remson-Corbin Shouse, Spring ; Jerry McNeely-Jerry Hoffman, Houston 2/3 Robert Vilyus-Marilyn Gale Vilyus, Houston ; Sheryl Thomas, Richmond ; Kris Sankaran, Sugar Land

Friday Swiss Bracket 17-9 Tables 1. Marilyn Slaughter, Missouri City ; Dottie Stevenson, Pearland ; Myra Marsh-Julia Thompson, Houston 2. Geri Noel-Diane O'Neill-Bette Benton-Dorothea Faubion, Houston

Friday Swiss Bracket 18-10 Tables 1. Ian Fetterley-Jay Evert-Gregory Andrews-Paul Andrews, Houston 2. Betty Cartmell-Mary Dodson-Patricia Kay-Mary Toland, Houston

Saturday Mid-Flight Pairs-13.0 Tables / Based on 53 Tables B1. Debi Balter-Raymond Alexanian, Houston B2Y1. Lotte Optekamp, Houston ; Erika Magid, Bellaire B3. John Burgoon, Mountain ON; Cheryl Macintosh, Orleans ON B4Y2. Cheryl Clark-David Greims, Dallas B5Y3. Jerry Myers, Edmond OK; Marilyn Schrameck, Oklahoma City OK Y4. G Thomas Rush, Houston ; Wes Peirce, The Woodlands 5 Shi-Lin Yeh-Bob Chiang, Sugar Land

Saturday Open Pairs-20.5 Tables / Based on 74 Tables A1. Jack LaVigne-Phillip Grothus, Houston A2. Steve Shirey, Fort Worth ; Robert Adams, Oklahoma City OK A3. Stephen Toplansky, Houston ; Kenneth Schutze, Austin A4. Daniel Leightman, Houston ; Mildred Breed, Cypress A5. Vinh Tran-Georgiana Gates, Houston X1. Stephen Wood-David Sokolow, Austin X3. Clif Rice

-Mark Howard, Houston X4. Lunhui Lin, Dickinson ; James Zhan, Sugar Land X5. Marilyn Mac Donald-Bill Mac Donald, Corpus Christi
Saturday Gold Rush Pairs-16.5 Tables B1, Dave Becker, Houston ; Bob Townley-Smith, Lumberton B2C1. Martha Dougherty-Sara White, Houston B3. Christian Liipfert-John Caudill, Houston B4C2. Diane Kaminsky, Bellaire ; Marvin Meistrich, Houston B5. Linda Brodie, Bellaire ; Carol Ehrman, Houston C3. Michael Rainbird, Austin ; Jenny Kimball, Round Rock C4. Jerry Deutser-Sid Weiss, Houston C5. Jane Herman-William Herman, Effingham IL
Saturday Swiss Bracket 1-9 Tables 1. Gillian Miner-Joe Grue, New York NY; Brad Moss, Denver CO; Justin Lall, Charlotte NC 2. Richard Pavlicek, Fort Lauderdale FL; Timucin Erkoc, Richmond ; Phil Clayton, Frisco ; Ira Chorush, Houston
Saturday Swiss Bracket 2-9 Tables 1/2 Reese Milner, Sarasota FL; Petra Hamman, Carrollton ; Tom Breed, Kingwood ; Joe Quinn, Sugar Land ; Hemant Lall, Dallas 1/2 James Breihan-Anton (Tony) Haddad, Houston ; Marilyn Adams, Beaumont ; Joe Yassi, Etobicoke ON; Jo Smith, Abilene
Saturday Swiss Bracket 3-9 Tables 1. Daniel Jackson-Deborah Jackson, Spring ; Dianna Gittelman, Houston ; Sandra Parker, Sugar Land 2/3 Robin Ladin-Stephen Reichel-Ariel Leibovitz-Max Levit, Houston 2/3 Layne Noble, Ottawa ON; Deborah Harper, Nepean ON; Allison L Cappelletti, Delray Beach FL; Rona Cappell, Toronto ON
Saturday Swiss Bracket 4-9 Tables 1. Jonathan Ernest, Lindale ; Peter Hudson, Coppell ; David Farris, Austin ; Charles Newton Jr, Rosenberg

2. Lucy Terrill-Elizabeth Ghrist-Dolores Aquino, Houston ; Sharon Campbell, Richmond
Saturday Swiss Bracket 5-9 Tables 1. Judy Cupps, Houston ; Marsha Boyer-William Boyer, Spring ; Lucilla Edwards, Pahrump NV 2. Hugh Humphries, Bellaire ; Elton Lipnick-Victor Tong-Ming Su, Houston
Saturday Swiss Bracket 6-9 Tables 1. Eric Sandberg-Harold Copeland-Raleigh Williamson-Janice Sandberg, Houston 2. Susan Kaplan-Sheila Harrison-Pam Barksdale, Houston ; Alfred Fortier III, Katy
Saturday Swiss Bracket 7-9 Tables 1. Pawel Hanus, Carrollton ; David Goldfarb, Houston ; Jonathan Goldberg, Saint Louis MO; Ari Sippola, Richardson 2. Armand Shapiro-Lynn Shapiro-Kathy Watkins-Terri Orlean, Houston
Saturday Swiss Bracket 8-9 Tables 1. Brett Elliott-Harry Elliott, Cypress ; Byron Elliott, Katy ; Robert Reichel, Houston 2. Gary Winston-Shari Winston-David Crooks, Houston ; Bill Kiehnhoff, Sugar Land
Saturday Swiss Bracket 9-9 Tables 1. Kimi Lambert-Patricia Berry-Julianne McKenna, Austin ; Venu Chintam, Tallahassee FL 2. Carolyn Labouliere, Seabrook ; Marsha Doyle-Robert Burridge-Bob Dowlen, Houston 98.00
Saturday Swiss Bracket 10-9 Tables 1. Linda Briggs-Robert Kacher, Jr, Beaumont ; Carolyn Worsham, Port Arthur ; Patricia Bell, Silsbee 2. Rita Wiegenstein-William McIndoo-Jo McDaniel-Tom Banet, Georgetown
Saturday Swiss Bracket 11-9 Tables 1. Janet Smith-Susan Stone-Marilyn Jordan, Kingwood ; Carol Krug, Houston 2. Ann Parker, Dallas ; Christopher Tsai-Robert Holliday-

Liane Tsai, Plano
Saturday Swiss Bracket 12 - 9 Tables 1. Carolyn Wedel, Houston ; Beverly Wedel, Bartlesville OK; Boyan Ganchev, Edmond OK; James Faw, Oklahoma City OK 2. Jo Ann Robertson, Bulverde ; Martha Gilchrist, Sevierville TN; Ann Perry-Sisir Sharma, San Antonio
Saturday Swiss Bracket 13-9 Tables 1. Mark Anderson, Cedar Park ; Thomas Hughes-Robert Tyler-Nora Fallon, Austin 2. Susan Morrison-Barbara Fagan-Dinah Weems-Carol Jewett, Houston
Saturday Swiss Bracket 14-9 Tables 1. Kenneth Hudson-Marilyn Gale Vilyus-Robert Vilyus, Houston ; Sheryl Thomas, Richmond 2/3 Russell Chandler-Laura Chandler-Jeannie Stone, Houston ; Donald Bell, Seabrook
Saturday Swiss Bracket 15-8 Tables 1. Francis Gay-Paula Gay-June Poplack-Susan Smith, Houston 2. Bruce Weiner-Ede Weiner, Houston ; Sheila Odell-Annette Ehrhardt, Katy
Evening Side Series-51.75 Tables / Based on 25 Tables 1/2 Carole Liss, San Rafael CA 1/2 Valentin Kovachev, Las Vegas NV 3. Jo Smith, Abilene 4/5 Ron Ashbacher, Saint Louis MO 4/5 Robert L McClendon, Ponte Vedra FL
Sunday Open Swiss Teams-46 Tables / Based on 127 Tables A1. Richard Pavlicek, Fort Lauderdale FL; Timucin Erkoc, Richmond ; Ira Chorush, Houston ; Phil Clayton, Frisco A2. Robert Hollman, Santa Barbara CA; Bruce Ferguson, Palm Springs CA; Mike Passell, Plano ; Geoff Hampson, Las Vegas NV A3. Stephen Wood-Louis Sachar-Tobi Sokolow-David Sokolow, Austin A4. John Erickson, The Woodlands ; Ralda St Pierre-Jack LaVigne, Houston ; Carolyn Fox, Manvel A5 Sally Wheeler-Buddy Hanby, The Wood-

lands ; Phillip Grothus, Houston ; Mildred Breed, Cypress X1. David Pearlman, Southlake ; Milton Neher, Richardson ; George Fillis-Karen Fillis, San Antonio X2/3 Linda Rensi, Katy ; John Du Bose Jr-Christopher Eick, Houston ; Siraj Jiwani, Pearland X2/3 James Zhan, Sugar Land ; Lunhui Lin, Dickinson ; Ari Sippola, Richardson ; Pawel Hanus, Carrollton X4. Rebecca Brown-C David Mitchell-Bob Otis-Jerrold Harrington, San Antonio X5. Chuck Gillis-Joan Pleason-Charles Markowitz-Aleksandr Adelman, Houston
Sunday Open Pairs-7.0 Tables A1. Kerr Godfrey, Houston ; Michael Huston, Joplin MO A2B1. Sandra Clark, Houston ; Linda Sutton, Conroe A3B2. Sam Dodson, Houston ; Donna Sparks, Fulshear A4B3. Debi Balter-Jolie Hess, Houston A5B4C1. Kathleen Malcolmson, Richmond ; Judith Busby, Houston C2. Wanda Wisniewska, Houston ; Carol Teufel, Meadows Place
Morning Side Series-42.50 Tables / Based on 14 Tables 1/2 Audrey Thompson, Houston 1/2 Wanda Meyer, Houston 3. Shirley McKee, Houston 4. Lew Levy, Houston 5/6 Debra Sherman, San Diego CA 5/6 Sandra Jackson, Bellaire
Afternoon Side Series-43.50 Tables / Based on 16 Tables 1. Jo Ann O'Malley, Katy 2/3 Bill Mac Donald, Corpus Christi 2/3 Marilyn Mac Donald, Corpus Christi 4/5 Barbara Grantham, Houston 4/5 La Quitta Talbot, Keller
Sunday B Swiss Bracket 1-9 Tables 1. Eric Sandberg-Janice Sandberg-Harold Copeland-Raleigh Williamson, Houston 2. Carol Winograd, Bellaire ; Anne Gorry, Houston ; Alison Andrews, San Antonio ; Sandy Smith, Calera AL
Sunday B Swiss Bracket 2-9 Tables

1. Peter Hudson, Coppell ; Charles Newton Jr, Rosenberg ; Cheri Staples, Houston ; Marie-Anne Johnson, Dallas 2. Robert Arnett-Nancy Reader-Ron Brown, Houston ; Troy Carr, Cypress
Sunday B Swiss Bracket 3-9 Tables 1. Gary Winston-Shari Winston-David Crooks, Houston ; Bill Kiehnhoff, Sugar Land 2. David Littmann, Brookshire ; Pamela White, Richmond ; Constance Singleton-Sharon Haley, Houston 1
Sunday B Swiss Bracket 4-9 Tables 1. Genie Hayden-Betty Jean Reeves-Norma Becker, Missouri City ; Betty Schell, Houston 2/3 James Moody-John Moore-Roxann Swenson-Thomas Smith, Austin 2/3 Steven Bell, Cypress ; Courtney Coffman, The Woodlands ; Jack Dean-Jeanette Dean, Houston
Sunday B Swiss Bracket 5-9 Tables 1. Walter Freitag, Georgetown ; Jim Goodale-Lynne Andress-Julie Connor, Houston 2. Gail Wood-Eleanor Lipscomb-Jane Boozalis, Houston ; Rosalind Kokolis, Bellaire
Sunday B Swiss Bracket 6-9 Tables 1. James Ochsner-Allison Ochsner-Robert Burridge-Marsha Doyle, Houston 2. Mary Cris Emmons-Carol Jewett-Barbara Fagan-John Caudill, Houston
Sunday B Swiss Bracket 7-9 Tables 1. Mark Anderson, Cedar Park ; Thomas Hughes-Nora Fallon-Robert Tyler, Austin 2. Charo Barnette-Joni Holten, Houston ; B J Renshaw, Spring ; Tricia Adcock, Hot Springs Vlg AR
Sunday B Swiss Bracket 8-10 Tables 1. Kenneth Hudson-Raymond Stopper-Lauri Laufman-Mariah Stopper, Houston 2. Meg Putman-Paul Putman, Austin ; Russell Chandler, Houston ; Ronnie Martin, Friendswood

LONE STAR REGIONAL CHAMPS



Thursday & Friday Swiss Bkt 1
 Sunday Swiss A
 Richard Pavlicek, Timucin Erkoc,
 Ira Chourush, Phil Clayton



Sunday Pairs A
 Michael Huston, Kerr Godfrey



Friday Open Pairs A
 Steve Toplansky, Ken Schutze



Saturday Pairs X
 David Sokolow, Stephen Wood



Tuesday & Wednesday Open Pairs A
 Richard Pavlicek, Timucin Erkoc



Sunday Pairs Y
 Kathleen Malcolmson,
 Judy Busby



Mon Swiss Bkt 7
 Sam Khayatt, Ann Pare,
 Frederick Gregory, Ronald Pare



Fri Swiss Bkt 6
 Ming Su-Abid Mumtaz,
 Victor Tong



Sat Swiss Bkt 12
 Beverly Wedel, Boyan Ganchev,
 Carolyn Wedel, James Faw



Thur Swiss Bkt 7
 Sheila Harrison Pam Barksdale



Sunday Pairs X
 Linda Sutton, Sandra Clark



Sunday BCD Swiss 5
 Lynne Andress, Julie Connor,
 Jim Goodale, Walter Freitag



Sunday BCD Swiss 2
 Marie Anne Johnson, Cheri Staples,
 Charles Newton Jr, Peter Hudson



Sunday BCD Swiss 4
 Norma Becker, Betty Schell,
 Genie Hayden, Betty Jean Reeves



Sunday BCD Swiss 1
 Harold Copland, Janice Sandberg,
 Raleigh Williamson, Eric Sandberg



Sat Swiss Bkt 4
 Jonathan Ernest,
 Charles Newton Jr, Peter Hudson



Sunday BCD Swiss 6
 Robert Burridge, James Ochsner,
 Allison Oschner, Marsha Doyle



Sunday BCD Swiss 7
 Robert Tyler, Nora Fallon,
 Mark Anderson, Thomas Hughes



Sunday BCD Swiss 8
 Lauri, Laufman, Mariah Stopper,
 Raymond Stopper, Kenneth Hudson



Thursday Swiss Bkt 7
 Sheila Harrison,
 Pam Barksdale



Monday Swiss Bkt 3
 Susan Kaplan, Alfred Fortier III,
 Edward & Bonny Kay Yetter



Monday Swiss Bkt 4
 Virginia Hixson, Bonnie Fellerman,
 Donald Hixson, Harold Fellerman



Monday Swiss Bkt 5
 Linda Briggs, Carolyn Worsham,
 Robert Kacher, Tim Stelly



Monday Swiss Bkt 6
Chie Yen, Victor Tong Abid Mustaz, Hau Ran Wang



Monday Swiss Bkt 7
Tera Boyd, Carol Diminnie, Evvie Gilbert, Terri Tedford



Monday Swiss Bkt 2
Kim Brinkman, Carmen Keys, David Ticen, Paul Cuneo



Tuesday Gold Rush Pairs
Martha Dougherty, Judith Earle



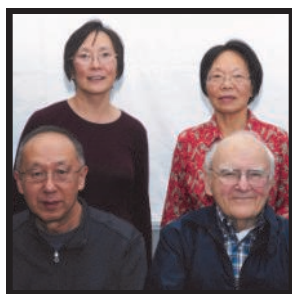
Tuesday Swiss Bkt 2
Jolie Hess, Sandra Clark, David Henke, Linda Sutton



Tuesday Mid Flight Pairs
Marilyn Joyner, Audley Karrasch



Tuesday Swiss Bkt 3
Abid Muntaz, Chuck Gillis, Victor Tong, Charles Markowitz



Tuesday Swiss Bkt 4
Shou Chao, Ming Su, Shih Ming Yang, Elton Lipnick



Tuesday Swiss Bkt 7
Chloe Ella Fackenthal, Teri Collier, Joyce Gore, Yvonne Strangemeyer



Tuesday Swiss Bkt 8
Marjorie Miller, Andrea Williams, Linda Adamchik, Patricia Bell



Tuesday Swiss Bkt 8
Carolyn Campbell, Susan Belding, Charlotte Johns, Laura McWilliams



Tuesday Swiss Bkt 10
Yvonne Serbin, Janet Smith, Carol Krug, Frances Simmons



Tuesday Swiss Bkt 11
Martha Ward, Sharon Ward, Connie Van Patter, Karen Roland



Tuesday Swiss Bkt 12
Mary Cris Emmons, Connie Conover, George & Mary Nelson



Tuesday Swiss Bkt 13
Cindy Hillman, Julie Stewart, Bob Mendel, Tonya McNabb



Tuesday Swiss Bkt 14
Sue Alt, Leah Margerison, Cynthia Rivet, Rick Margerison



Tuesday Swiss Bkt 15
Patrick Finnigan, Bill Kalmbach, Robert Caldwell III, W Kenneth Davis



Wednesday Swiss Bkt 3
David Dyer, Ralph Herz, Raliegth Williamson, Harold Copeland



Wednesday Swiss Bkt 4
Janelle Frusha, Lessley Cain, Frances Robbins, Mavis Warren



Wednesday Swiss Bkt 5
Jill Spence, Joseph Volanski, Michael Novack, Steve Vaughn



Wednesday Swiss Bkt 8
Evvie Gilbert, Tera Boyd, Mike Goldberg, Mack Meigs



Wednesday Swiss Bkt 11
Robert Crawford, Tom Nobis, Betty Schell, Carolyn Wedel



Wednesday Swiss Bkt 12
Leah Margerison, Karen Roland, Rick Margerison, Connie Van Patter



Thursday Swiss Bkt 3
George & Karen Fillis, James LaFountain, Richard Ware



Thursday Swiss Bkt 4
Howard Huynh, Sharon Dameron, Joe Black, Robert McClendon



Thursday Swiss Bkt 5
Terri O'Brien, Sandy Potts, Anita Albert, Stan Pushkarsky



Thursday Swiss Bkt 6
Kristen Onsgard, Stefanie Scott, Paul Cuneo, Carmen Keys



Thursday Swiss Bkt 7
Shou Chao, Courtney Coffman, Shih Ming Yang, Steven Bell



Thursday Swiss Bkt 8
Jack & Jeanette Dean, David Glandorf, James Frick



Thursday Swiss Bkt 9
Karen Fireman, Judi Sulzbach-Judy Gibson, Mary McDonald



Thursday Swiss Bkt 10
Mary Rita de Hoyos, Hazel Medellin, Barbara Morgan, Linda Banks



Thursday Swiss Bkt 11
Robert Crawford, Tom Nobis, Betty Schell, Carolyn Wedel



Thursday Swiss Bkt 12
Rosalind Kokolis, Sandra McMinn, Jo Anne Knodel, Jane Boozalis



Thursday Swiss Bkt 14
Tim Jones, Paul Putman, Meg Putman



Thursday Swiss Bkt 16
Maary Ellen Little, Gwendolyn Faherty, Joyce Anderson, Carmond Fitzgerald



Friday Swiss Bkt 9
Aleksandr Adelman, Marie-France Benoit, Samuil St Ivanov, Jeremy Lewis, Chuck Gillis



Friday Swiss Bkt 8
Val Grady, Irene Baker, Dale Grady, Rodney McCullough



Saturday Gold Rush Pairs
Martha Dougherty, Sara White



Friday Mid Flight Pairs
James Moody, Thomas Smith



Friday Swiss Bkt 2
Gary King, John Schwartz, Joe Gittelman, Jim Thurtell



Friday Swiss Bkt 4
Howard Huynh, Joe Black, Terry Richardson, Wiley McMinn



Friday Swiss Bkt 5
Steve Vaughn, Rick Stell, Courtney Coffman, Steven Bell



Wednesday Swiss Bkt 10
Courtney Coffman, Steven Bell



Friday Swiss Bkt 10
Rosalind Smigh, Frank Durante, Carol Casey, Nancy Latner



Friday Swiss Bkt 11
Rita Wiegenstein, Jo McDaniel, William McIndoo, Tom Banet



Friday Swiss Bkt 13
Linda McReynolds, Connie Conover, David Wicks, Mary Cris Emmons



Friday Swiss Bkt 14
Ann Marie Ross, Connie Montgomery, Connie Burnett, Beverley Linskey



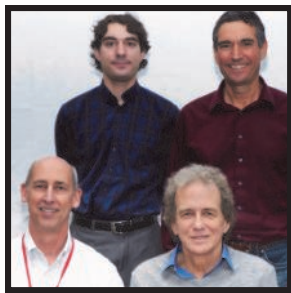
Friday Swiss Bkt 16
Patric Finnigan, Tracy Bruce,
Robert Tyler, Mark Anderson



Friday Swiss Bkt 17
Myra Marsh, Marilyn Slaughter,
Dottie Steverson, Julia Thompson



Friday & Saturday Swiss Bkt 2 Tie
Jo Smith, Marilyn Adams,
James Breihan, Joe Yassi
Tony Haddad



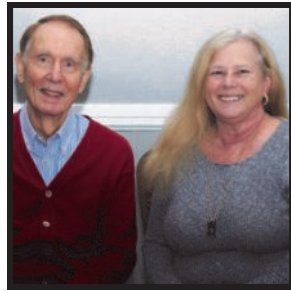
Friday Swiss Bkt 18
Paul Andrews, Gregory Andrews,
Jay Evert, Ian Fetterley



Thursday Open Pairs X
Pat McMullin, Chuck Gillis



Thursday Open Pairs Y
John Moore, Roxann Swenson



Saturday Mid-Flight Pairs
Raymond Alexanian, Debi Balter



Saturday Swiss Bkt 3
Dianna Gittelman, Daniel Jackson,
Deborah Jackson



Wednesday-Thursday
Championship Pairs
John Zilic, Tom Peters



Tuesday & Saturday Swiss Bkt 6
Harold Copeland, Janice Sandbert,
Raleigh Williamson, Eric Sandberg



Saturday Swiss Bkt 8
Robert Reichek, Harry Elliott,
Byron Elliott, Brett Elliott



Saturday Swiss Bkt 9
Patricia Berry, Kimi Lambert,
Julianne McKenna, vVenu, Chintam



Saturday Swiss Bkt 10
Linda Briggs, Carolyn Worsham,
Patricia Bell, Robert Kacher



Saturday Swiss Bkt 11
Marilyn Jordan, Susan Stone,
Carol Krug, Janet Smith



Saturday Swiss Bkt 13
Robert Tyler, Nora Fallon,
Thomas Hughes, Mark Anderson



Saturday Swiss Bkt 14
Kenneth Hudson, Sheryl Thomas,
Marilyn Gale & Robert Vilyus



Saturday Swiss Bkt 15
June Poplack, Susan Smith
Paula & Francis Gay



Friday Pairs Flt X
Charles Newton, Jr., Johathan Ernest



Saturday Swiss Bkt 5
Marsha Boyer, Judy Cupps,
William Boyer, Lucilla Edwards



Saturday Swiss Bkt 7
Jonathan Goldberg, David Goldfarb,
Pawel Hanus, Ari Sippola

DALLAS MEMORIAL DAY SECTIONAL
May 24 – 28, 2018

RICHARDSON CIVIC CENTER, Richardson, Texas –
Hosted by: Dorsey's Bridge Studio
Southwest Corner of Arapaho and Highway 75 (Central Expressway)

Thursday, May 24

Stratified 299er Pairs (0-5 play free)	10:00am, 2:30pm
Stratified open Pairs	10:00am, 2:30pm
Bracketed Swiss Teams	10:00am & 2:30pm

Friday, May 25

Stratified 299er Pairs (0-5 play free)	10:00am, 2:30pm
Stratified Open Pairs	10:00am, 2:30pm
Bracketed Swiss Teams	10:00am & 2:30pm

Saturday, May 26

Stratified 299er Pairs (0-5 play free)	10:00am, 2:30pm
Stratified Open Pairs	10:00am, 2:30pm
Bracketed Swiss Teams	10:00am & 2:30pm

Sunday, May 27

Stratified 299er Pairs (0-5 play free)	10:00am, 2:30pm
Stratified Open Pairs	10:00am, 2:30pm
Bracketed Swiss Teams	10:00am & 2:30pm

Monday, May 28

Strati-flighted Swiss Teams – 2 Session Event	10:00am
499er Swiss Teams – 2 Session Event	10:00am
Stratified Open Pairs	2:00pm

Stratifications
Pairs: A: 2500+ B: 750-2500, C: 0-750 (based on average master-points)
299er Events: A: 200-299, B: 100-200, C: 0-100 (play together)
Strati-flighted Teams: A: 4000+, AX: 0-4000 (play together)
B: 2500-1500, C: 1500-500, D: 500-0 (play together)

Entry Fee: ACBL members, \$13 per daytime session, \$10 per evening session; unpaid and non-members, \$16 per session. Monday Swiss: \$104 per team of four.

Tournament Chair: Dorsey Shaw, Carol Rieger
(dcacarol@aol.com)
Partnership: Mimi Lempert, Jan Welsh
(mlempert@mindspring.com)

Snacks and drinks every session; lunch provided during Swiss Teams game on Monday.

Hotel Info: **Wingate by Wyndham**, 1577 Gateway Blvd... Phone 972-234-5400. **Courtyard by Marriott**, 1000 S Sherman St, Richardson, TX 75081, Phone 972.235-5000.

Unit 176
Dallas



Mary Jane McGinnis

Unit 176 kicked off the new year with its electional sectional on January 4th-7th at the Richardson Civic Center. Our slate of newly elected board members are Eileen Smith-Davidoff, Scott Nason, Jim Rider, and Martha Young was re-elected. Eileen Smith-Davidoff is the new President of our 2018 board with Joe Gill as Vice President, Martha Young as Treasurer, and Randy Earle as Secretary. Please let all of them know we appreciate their dedication in volunteering their time to continue our unit's success.

Our January tournament was a money-maker thanks to all of our volunteers. However, we have learned that night games simply are not well-attended. On Saturday night for our bridge social, Cathie Tucker prepared homemade chili with cornbread and cobbler for dessert. Everything was delicious; once more Cathie outdid herself, but we only had eight tables. Therefore, in the future we will not have night games.

Routinely, the new board visits all the clubs in unit 176, and our first was to Friendly Bridge Club in Plano on Monday, January 29th. Vi Ganeles, a gracious volunteer, not only plans these visits, but also takes treats too. This time Vi prepared turkey and ham sandwiches and Joan Pyne baked a

selection of cakes. Friendly as always was very welcoming. Our next visit was to Truett Cates's Bridge Club in Sherman on Thursday, February 8th. Vi Ganeles took a huge cheesecake with a bowl of berries and the Sherman club provided an array of snacks. As usual, everyone made us feel so welcomed.

Congratulations to Houston for an excellent tournament. Table counts were way up which made for a huge success. Jay Whipple, the president of the ACBL, gave out all district 16's awards. Our own Cheryl Clark won the Texas Star award, and also unit 176 was well-represented for the NAP's. For flight A, Joan Jackson and Peggy Sutherlin, as well as Mark Bumgardner and Barry Schaffer are finalists. For flight B, Scott Nason and Jeff Dater won first and Bogumil Knypinski and Pawel Hanus won third. Congratulations to all and good luck at the Nationals.

I'm happy to report that Austin College in Sherman just offered an intensive bridge course in the January term lasting three and a half weeks from 1:15-4:45. Our unit 176 member, Truett Cates, was the teacher, and from talking with him, intense it was! Each teaching day began with a lecture followed by supervised play. During these lessons, Truett emphasized bridge proprieties and also required the students to join the ACBL. Among many requirements his students were required to play online five times in limited games, five times in open games, and in fifteen 8 board

tournaments both imp and match point. Truett took his class to Denton for a non-life master tournament and also required they play in McKinney. What a great way to get the younger generations interested in bridge! Truett will be teaching this class during the even years so his next class will be in January 2020. Many thanks, Truett.

Please send more great news like this to me so that I can include it in the *Scorecard*. Hope to see you at the table.

Richardson Election Sectional
Jan 04-07 2018

450 tables 429 players.

- 1 50.36 Petra Hamman
- 2 50.36 Nancy Passell
- 3 50.36 Hemant Lall
- 4 47.48 Stephen Kornegay
- 5 47.48 Nancy Kornegay
- 6 47.48 Nagy Kamel
- 7 47.48 Mark Bumgardner
- 8 44.78 Phil Clayton
- 9 34.91 Ira Hessel
- 10 34.05 John Schwartz
- 11 28.49 Bart Bramley
- 12 22.00 James Thurtell
- 13 19.13 John Spessard
- 14 17.25 Peggy Sutherlin
- 15 16.95 Marcia Hutchison
- 16 16.38 Tom Edwards
- 17 16.38 Bryan Storey
- 18 15.71 Michael Murphy
- 19 14.82 Eric Diamond
- 20 14.75 Martin Hester
- 21 14.75 Kim Brinkman
- 22 14.75 Howard Huynh
- 23 14.66 Michael Penick
- 24 14.66 Bill Staats

25 14.58 Marcus Poe Jr

Thursday Morn Open Pairs-20.0 Tables / Based on 29 Table A1. Marcia Hutchison-Florence Beaird A2B1. Ira Nemazie-Pat Measley A2. Randy Earle-Richard Witttrup B1. Jim Porter-Robert Deboom B2. Jackie Long-Janet Meye
Thursday Morn 299er Pairs-8.5 Tables ABC1. Margaret Jo Duff-William Duff ABC2. Robert Alferts-Kenneth Melvin Allen
Thursday Aft 299er Pairs-8.5 Tables ABC1. T Madden-Cecily Hutchison ABC2. Linda Harley-Terence Harley
Thursday Aft Open Pairs-19.0 Tables / Based on 28 Tables A1. Tom Whitesides-Marian Maley A2. Judy Bramley-Bart Bramley B1. Mark Hatkoff-R Randall Smith B2. Charles Brown-Jimmy Justice C1. John Ellis-Denise Strueber C2. Jackie Long-Janet Meyer
Thursday Swiss Bracket 1-7 Tables 1. Hemant Lall-Peggy Sutherlin-Nancy Passell-Petra Hamman 2. Stephen Kornegay-Nancy Kornegay N Richland Hls ; Mark Bumgardner-Nagy Kamel
Thursday Swiss Bracket 2-7 Tables 1. Frank Durante-Nancy Latner-James Rider-Cheryl Rider 2. Jack

Hartel-Jill Hartel-Brian Gelles-Janet Gelles
Thursday Swiss Bracket 3-7 Tables 1. Keith Meyer-Marci Meyer-Carla Guthrie-Beverly Yoehle 2. Judy Nixon-Jim Nixon-Jeanette McDonald -James Cothran
Thursday Swiss Bracket 4-9 Tables 1. Martha Ward-Sharon Ward-Connie Van Patter-Karen Roland 2. Tommie Anglemyer-Bonnie Arnold-Sandra Fedro-Louise Shanley
Friday Morn Open Pairs-17.0 Tables / Based on 27 Tables A1. Preston Morrow-Jean Jensen A2.. Bill Osborn-John Spessard B2. Jackie Hertweck Edmond OK; E J Nowak 1 Wayne Evans-William Driscoll 2 Ira Nemazie-Maryanne Hon
Friday Morn 299er Pairs-10.5 Tables ABC1. Margaret Jo Duff-William Duff ABC2 Howard Cavins-Mary Jane Hall
Friday Aft Open Pairs-18.5 Tables / Based on 28 Tables A1. Brady Allen-Michael Hout A2. Bill Riley-Nancy Riley B1. Jon Browne Plano ; Bob McNeill B2. Donna Gibbs Denton ; Lindsey Jones Oak Point c2. Wayne Evans-William Driscoll Richardson 5
Friday Aft 299er Pairs-9.5 Tables ABC1. Robert Bender-Marjory Myers AB2. Rick Degrauwe-Rosemary Lootens C2. Anne Good-

man-Gano Ehlers
Friday Swiss Bracket 1-7 Tables 1. John Schwartz--James Thurtell-Bart Bramley-Phil Clayton 2. Nancy Kornegay-Stephen Kornegay-Mark Bumgardner--Nagy Kamel
Friday Swiss Bracket 2-7 Tables 1. Eric Diamond-Tony Pellegrini-Richard Page-Rich Brandenburg 2. Brian Gelles-Janet Gelles-David Haratyk-Raymond Clark
Friday Swiss Bracket 3-7 Tables 1. Karen Caton-Caron Peck-Sheri Wolkenstein-Ann Parker 2. G Morey-Mickey Tryon-Charles Gibson Jr-Stephen Bennett
Friday Swiss Bracket 4-9 Tables 1. Jerry Frankel-Nicolas Weisz-Karen Cohen-Mary Lynn Genovesi 2. Judy Nixon-Jeanette McDonald-Jim Nixon -Ross Ramsey
Saturday Morn Open Pairs-17.0 Tables / Based on 27 Tables A1. Jerry Derby-Pat Cassidy a2. John Schwartz-Phil Clayton BC1. Jianbo Chen-Jianxin Qi B2. Melba Clark-Ann Curry C2. Barbara Aide Plano ; Judy Thompson
Saturday Morn 299er Pairs-9.5 Tables AB1. Gano Ehlers-Neill Ray AB2C1. Judy Bouska-Judy Duval 2 John Saylor-Debor Cassen
Saturday Aft Open Pairs-19.0 Tables A1. Phil Clayton-John Schwartz

A2. Jack Borenstein-John Spessard BC1. Pingshan Wen-Xiaoqi Zhou B2. Randy Earle-Preston Morrow C2/3 Beach Aten-Kathleen Aten B2/3 Jackie Long-Janet Meyer
Saturday Aft 299er Pairs-9.0 Tables AB1. Judy Bouska-Judy Duval AB2C1. Angela Johnson-Darlene Campbell C2. Linda Cerf-Patricia Mittenthal
Saturday Eve Open Pairs-8.5 Tables A1. Jack Rollier-Natalie Rollier A2B1. Judy Corey Edmiston-Mary McGinnis A2B1. Valarie Remmers-Dale Remmers B2. Vivian Li-Jun Li
Saturday Swiss Bracket 1-7 Tables 1. Hemant Lall-Ira Hessel-Nancy Passell-Petra Hamman 2. Nancy Kornegay-Stephen Kornegay-Mark Bumgardner-Nagy Kamel
Saturday Swiss Bracket 2-7 Tables 1. Martin Hester-Kim Brinkman-Howard Huynh-Chen Wang 2/3 Martha Young-Marcia Hutchison-Bob Friz-Eric Diamond 2/3 Jim Harp-Mary McGinnis-Connie Van Patter-Karen Roland
Saturday Swiss Bracket 3-7 Tables 1. Kathleen Carr-James Richman-Robert Schmidt-Ari Sippola 2. Pawel Hanus-Bogumil Knypinski-Chris Anderson-Nancy Fellman
Saturday Swiss Bracket 4-10 Tables 1. Jan Mogged-Charles Mogged Jr-

Rosalee Hacker-Virginia Farley-Richard Langland 2. Judy Nixon-Jim Nixon-Jeanette McDonald-James Cothran
Sunday A/X Swiss Teams-15 Tables / Based on 43 Tables A1. Marcus Poe Jr-Tom Edwards-Phil Clayton-Bryan Storey A2. Marion Gebhardt-Steve Shirey-David Pearlman-Robert Adams X1. Hua Yang-Tiger King-James Zhan-Lunhui Lin X2. William Garrard-Donna Garrard-Robert Buchanan-Gary Neisler
Sunday B/C Swiss Teams-21 Tables BC1. Ann Lewis-Carol Nicoud-Nancy Harralson-Lue Waddle B2. Mickey Tryon-Stephen Hibbard-Paula Justice-Jimmy Justice C2. Floyd Gerwig-Carla Joiner-Karen Cohen-Mary Lynn Genovesi
Sunday 0-500 Swiss Teams-7 Tables A1.. Anne Curry-Jeanne Wyatt-Carol Murray-Judi Mairs A2B1. Mary Chaffin-Molly Hamilton-Gretchen Cash-Barbara Taylor
Sunday Aft Open Pairs-7.5 Tables ABC1. Dale Remmers-Valarie Remmers AB2. James Willson-Catherine Tucker C2. Paulette Armstrong-Cecily Hutchison

DALLAS JANUARY SECTIONAL WINNERS



Thursday Morning Open Pairs B
Pat Measley - Nemazie



Thursday Swiss Bkt 2
Frank Durant, Cheryl Rider,
Nancy Latner, Jim Durant



Friday Swiss Bkt 2
Eric Diamond, Rich Brandenburg,
Rich Page, Tony Pellegrini



Thursday Swiss Bkt 4
Sharon Ward, Martha Ward
Karen Roland, Connie Van Patter



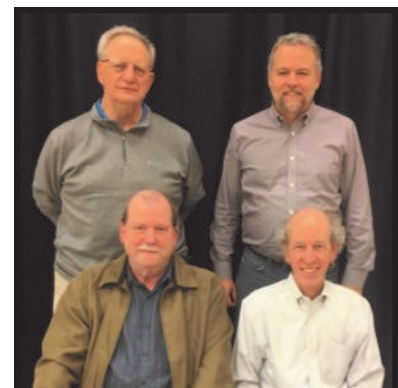
Saturday Swiss Bkt 4
Jan Mogged, Charles Mogged Jr,
Rosalee Hacker, Richard Langland



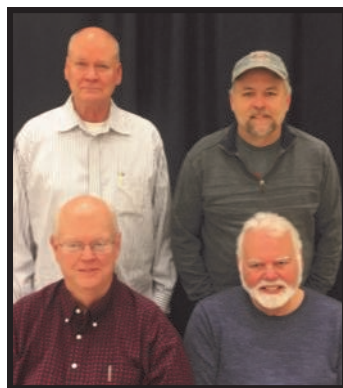
Thursday Swiss Bkt 3
Keith & Marci Meyer,
Carla Guthrie, Beverly Yoehle



Thursday Swiss Bkt 1
Hemant Lall, Peggy Sutherlin,
Nancy Passell, Petra Hamman



Friday Swiss Team Bkt 1
John Swartz, Phil Clayton,
Jim Thurtell, Bart Bramley



Sunday Flight A Swiss
Mark Poe, Phil Clayton,
Tom Edwards, Bryan Storey



Thursday Morning Open Pairs A
Marcia Hutchinson, Florence Beaird



Friday Morning Pairs A
Preston Morrow, Jean Jenson



Sunday Afternoon Open Pairs A,B,C
Dale & Valarie Remmers



Saturday Swiss Bkt 1
Petra Hamman, Nancy Passell,
Hemant Lall, Ira Hessel



Saturday Morning Pairs A
Pat Cassidy, Jerry Derby



Saturday Afternoon Open Pairs A
John Schwartz, Phil Clayton



SundayFlight B Swiss
Nancy Harralson, Ann Lewis,
Lou Waddle, Carol Nicoud



Saturday Swiss Bkt 3
Ari Sippola, Kathy Carr,
Jim Richman, Bob Schmidt



Saturday Swiss Bkt 4
Jan Mogged, Charles Mogged Jr,
Rosalee Hacker, Richard Langland



Friday Swiss Bkt 3
Karen Caton, Ann Parker,
Csrone Peck, Sheri Wolkenstein




Saturday Swiss Bkt 3
Ari Sippola, Kathy Carr,
Jim Richman, Bob Schmidt



SundayFlight B Swiss
Nancy Harralson, Ann Lewis,
Lou Waddle, Carol Nicoud

Unit 183
Fort Western



Bill Walker

By the time you read this, the Holiday Season and Valentine's Day will be history with nothing left but some pleasant memories. Anyway, most will be pleasant. Stepping on the scale in early January may not be that great; decadent desserts do come at a price. And then those credit card bills arrive. We've just gotta cut back next year.

One affair does stick out from the holidays though. The Unit 183 Christmas Party is always great fun and this year was no exception. We had twenty-seven tables, an outstanding lunch, and a bundle of interesting door prizes.

Steve Shirey directed two open sections and a 499er section in his usual smooth style. Nothing ever seems to ruffle him. A lunch of turkey, ham, dressing, veggies, rolls, etc. was prepared and served by Janet Jordan, Sue Rowe, and Pat Sears. Maybe it's just me, but their sassy aprons added a bit of homelike cheer. Jacque Montgomery selected door prizes and accomplished the feat of pleasing everyone who won one. A good day was had by one and all. Overall winners are listed at the end of this article.

Valentine's Day is for lovers. There is a certain Lorelei call that all bridge players are drawn into from time to time. From beginners through experts, even though better players have more control over their emotions. It starts with a pleasant surprise, you weren't expecting this. Then the ardor grows as you examine its features and

distribution. If it were possible to send flowers or chocolates to a bridge hand; you would. Then the affair is over. When the dust settles, you are down two doubled. So much for Valentine's Day in bridge land.

Unit 183 has two pairs who qualified for NAP flight C at the Nationals; Jim Nixon and Ross Ramsay (1st), and Chuck and Jan Mogged (3rd). David Pearlman and Paul Schaefer recently had a 75.5% game. Joyce Armstrong has made life master, congratulations.

I still need the input from everyone on who did great things at the bridge table.

Unit 183 has new officers for 2018. They are: President and Treasurer, Linda Spangler; Vice President, Jacque Montgomery; and Secretary, David Pearlman. Other Directors are: Janet Jordan, Kay Jones, Mickey Tyron, Sue Rowe, Steve Shirey, and Cynthia Benton. Congratulations and good luck for the coming year.

Unit 183 Christmas Party winners:

Open Overall:

A1. Don Reynolds and Buck Buchanan; A2 Linda Spangler and Hugh Hillaker; A3 Susan O'Neil and Bill Ream; A4 Nancy and Stephen Komegay; A5 Becky Kornigseder and Gary Neisler; A6 B1C1. Jan and Chuck Mogged; B2C2. Michael Goldman and Dick Simon; B3 Marlene Round and Penny Mixon; B4C3 Marilyn Elston and Barbara Baker; B5C4 Jacque Montgomery and Jane Larimore; B6 Winnie Simon and Bill Morris; C5 Janet Jordan and Laura Nash.

499er Winners:

A1B1 John Alexander and Brian

Eaton; A2B2C1 Sharon and Bobby McLellan; A3B3C2 Elizabeth Semrad and Donna Beene; A4B4C3 Fred Team and Joan Russey; A5 Harley Puff and Peggy Falconer.

Bridge Trivia.

"Gremlin: a cause of mechanical error or malfunction conceived of as a small mischievous gnome."

Does Unit 183's dealing machine have a gremlin?

In an essay by Matthew Kidd, "Slam Statistics" November 8, 2013, Kidd presents data on the frequency of slams. His research indicates 1.84 slams will be bid during a 27 board game. Or that each team will have .92 slams available during a session. This fits nicely with the old adage of one slam per session. But what about more than one slam per session? Kidd uses statistical methods to determine that the likelihood of five slams is one-hundredth as likely as +one slam.

Yet recently, in a Unit 183 twenty-six board game, nine slams, yes NINE slams, were available. What are the odds of that happening? Kidd doesn't address this possibility, but using the same table as Kidd, the odds become quite small. Less likely than being hit by lightning, dying during a tsunami in the Metroplex, or being trampled by a herd of wild water buffaloes.

Does Unit 183's dealing machine have a gremlin? It certainly seems that a mischievous gnome is up to something.

Jan 26-28 2018
228 players 192 tables.
1 34.56 Stephen Komegay
2 34.56 Nancy Komegay
3 34.56 Nagy Kamel Plano
4 34.56 Mark Bumgardner
5 18.92 Linda Spangler
6 18.10 Don Reynolds
7 16.94 Tom Edwards
8 16.94 Kimmel Jones
9 16.94 Hugh Hillaker
10 16.60 Robert Buchanan

Fri Aft Open Prs (by avg)-12.5 Tables / Based on 20 Tables A1. Darlene Shirey-Mary Hoger A2. Jimmy Reynolds-Mary Ann White B1. Winifred Simon-Barbara Yates B2C1. Jin Chu-Bob Dingle 2/3 Kenneth McDowell-Patricia McDowell 2/3 Grace Daddario-Robert Dixon
Fri Aft 299 Prs (hi plyr)-7.0 Tables ABC1. Lawrence Fritz-Virginia Lowinski ABC2. Kenneth Lee-Robert Stevens

Fri Eve 299 Prs (hi plyr)-3.0 Tables AB1. Robert Dove-Gretchen Clerc AB2. Karen Cook-Patricia Gaultney

Fri Eve Open Prs (by avg)-8.5 Tables / Based on 12 Tables A1. Jerry Derby-Pat Cassidy A2 Jay Gibson-Martha Young B1. Jimmy Reynolds-Mary Ann White B2C1. Lynn Long-Cynthia Benton C2. Phillip Yorston Abiquiu NM; David Robinson

Fri Bracketed Swiss-1-7 Tables 1. Nancy Komegay-Stephen Komegay-Mark Bumgardner-Nagy Kamel 2. Carol McConnell-Theresa Ann Brantley-Rodney Bland-Pamela Bland

Fri Bracketed Swiss-2-9 Tables 1. Diane Washabaugh-Marilyn Elston-Pamela Gladysz-Annie Mason 2. Alan Rauch-Michael Goldman-Walter Merritt-M Howard

Sat Mor Open Prs (by avg)-17.0 Tables / Based on 28 Tables A1. Don

Reynolds-Robert Buchanan A2. Bart Bramley-Judy Bramley B1. Ginger Kennedy-Ivan Uys B2. Wiltie Creswell-Michael Goldman C1. Shelby Schafer-Laura Nash C2. David Branch-Robert Bever

Sat Mor 299 Prs (hi plyr)-10.5 Tables AB1. Rodney Wood-Joan Wood AB2C1 Carol St Onge-Robert Johns 2 Deborah Sanders-Ruby Day

Sai Aft Open Prs (by avg)-14.5 Tables / Based on 21 Tables A1. Bart Bramley-Norman Beck A2. Robert Buchanan-Don Reynolds B1. David Robinson-Khalifa Ahmed B2C1. David Branch-Robert Bever C2. Shelby Schafer-Laura Nash

Sat Aft 299 Prs (hi plyr)-6.5 Tables AB1. William Garner-Larry Dick AB2. Rodney Wood-Joan Wood C1. Robert Stevens-Kenneth Lee C2. John Saylor-Albert Winton

Sat Bracketed Swiss-1-7 Tables 1. Nancy Komegay-Stephen Komegay-Mark Bumgardner-Nagy Kamel 2. Linda Spangler-Hugh Hillaker-Tom Edwards-Kimmel Jones

Sat Bracketed Swiss-2-9 Tables 1 Patricia Sears-Jane Larimore-Jacqueline Montgomery-Sue Rowe 2. Mary Lynn Trentham-Marjorie Deutsch;- Roma Allison-Letty Garek

Sun A/X Swiss-8 Tables / Based on 24 Tables 1. Nancy Komegay-Stephen Komegay-Mark Bumgardner-Nagy Kamel 2. Linda Spangler-Kimmel Jones-Tom Edwards-Hugh Hillaker

Sun Bracketed B Swiss-1-7 Tables 1. Dick Simon-Winifred Simon-Michael Goldman-William Morris Jr 2. Paula Justice-Jimmy Justice

Sun Bracketed B Swiss-2-9 Tables 1/2 Jo Hammett-Virginia Boudreau-Donna Gibbs-Lindsey Jones 1/2 Marilyn Elston-Walter Merritt-M Howard-Barbara Baker

Fort Western Sectional

FT. WESTERN JANUARY 2018 SECTIONAL CHAMPS



Friday Afternoon Open Pairs A
Mary Hoger, Darlene Shirey



Friday Evening Open Pairs A
Pat Cassidy, Jerry Derby



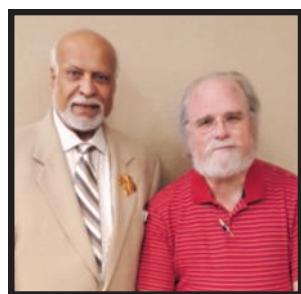
Friday & Saturday & Sunday Swiss A
Nancy Komegay, Nagy Kamel,
Steve Komegay, Mark Bumgardner



Saturday Morning Open Pairs A
Don Reynolds, Buck Buchanan



Saturday Morning Open Pairs B
Ginger Kennedy, Ivan Uys



Saturday Afternoon Open Pairs B
Khalifa Ahmed, David Robinson



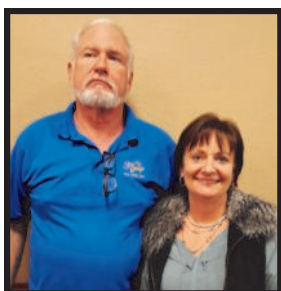
Saturday Morning Open Pairs C
Shelby Schafer, Laura Nash



Saturday Swiss B
Jane Larimore, Pat Sears, Sue Rowe



Friday Afternoon Pairs B
Winifred Simon



Friday Evening Pairs B
Jimmy Reynolds, Mary Ann White



Friday Swiss B
Diane Washabaugh, Pam Gladysz,
Marilyn Elston, Annie Mason



Friday Evening Open Pairs C
Cynthia Benton, Lynn Long



Sunday B Swiss Team Bkt 1
Dick Simon, Winifred Simon,
Michael Goldman



Sunday BCD Swiss
M Howard, Walter Marrit, Barbara Baker,
Marilyn Elston



Sunday BCD Swiss
Dick Simon, Winifred Simon,
Michael Goldman, William Morris Jr



Sunday BCD Swiss Team Tie
M Howard, Walter Marrit,
Barbara Baker, Marilyn Elston



Friday Evening 299ers
Gretchen Clerc, Robert Dove



Friday Afternoon 299ers
Saturday Morning 299ers
Virginia Lowinski, C Lawrence Fritz



Saturday Afternoon 299ers
William Garner

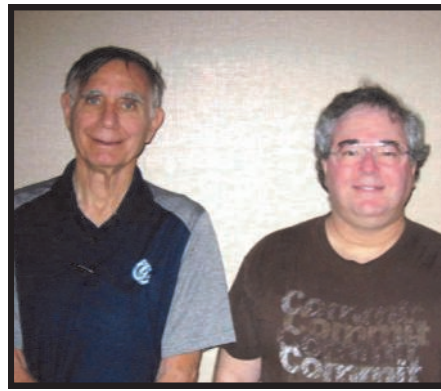
CORPUS CHRISTI FEBRUARY SECTIONAL CHAMPS



Friday Afternoon Open Pairs Ft A
Marilyn & Bill McDonald



Friday Evening Hurricane Harvey
Charity Event Ft A
George & Karen Fillis



Saturday Morning Open Pairs A
Harry Elliott, David Goldfarb



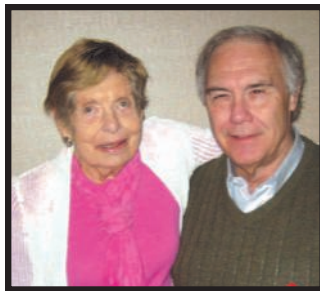
Saturday Afternoon Open Pairs Ft A
Terry Peterson, David Ticen



Saturday Morning Open Pairs Ft C
Patricia Kaddatz, Betty Mengle



Sunday Swiss Ft B
Melissa Plumb, Mahesh Maruvada



Friday Aft Open Pairs B&C
Mary Driesbock, William Whittle



Friday Evening Hurricane Harvey
Charity Event Ft B
Jason Kiker, Phyllis Pruet



Friday Evening Hurricane Harvey
Charity Event Ft C
Betty Voss, Mabel Byrnes

**Unit 187
Corpus Christi**



Melissa Plumb

Happy New Year and blessings to all!

Unit 187 would like to thank those who attended our Regional Tournament. We had bridge patrons from near and far, including Canada. We will be hosting our Corpus Christi Shoreline Tournament February 16-18th at the Holiday Inn Downtown Marina. We look forward to your attendance.

Our Christmas celebration was a festive occasion. With a bridge game, great food, and company it is hard not to have a blast. The unit would like to thank Martha DeCou for her hard work in preparing yet another successful event for our club.



It is with a sad heart that I announce the passing of our beloved Dee Schade on December 2, 2017. Dee was an asset to our club for decades. She was on the Board of Directors, Ethics Committee, a game Director, and editor of the Scorecard for numerous years. Dee Schade was an avid reader and extremely studious bridge player. She was very competent with director rules and regulations, always wanting a just response with decision making during games. Being fair at the bridge club was highly important to her at our club. Dee often reminded our rebellious patrons of our zero-tolerance policy.

Dee Schade loved to travel, spend time with her family and friends, and dote on her grandchildren. Dee and her husband Gene, have two children, Jackie and Terry whom she adored.

As a novice player, I can say that since my return to the bridge club in May of 2015, Dee always offered help with my game. Once I became a director, she offered help with rules and regulations. Shortly after, I was elected to the Board of Directors and again, guidance was available from Dee. Six months later, I took over the editor position and once again she

offered help and archives. I feel it is safe to say, that if Dee Schade offered this enormous amount of assistance to one person, I can imagine the number of bridge patrons she has helped in her decades at the club!

Dee Schade is loved and will be missed by her many bridge friends. Our deepest condolences to Gene, Jackie, Terry, and extended family and friends.

**Corpus Christi
Shoreline**

Feb 16-18 2018 76 players.82 tables.

- 1 15.14 Marilyn Mac Donald
- 2 15.14 Bill Mac Donald
- 3 12.88 Donna Swarthout
- 4 12.88 Dave Swarthout
- 5 12.67 Karen Fillis
- 6 12.67 George Fillis
- 7 10.34 David Ticen
- 8 9.55 Sheryleen Grothus
- 9 9.55 Beverly Santos Sa
- 10 9.07 Tommy Latham

Fri Aft Open Pairs-16.0 Tables a1. Marilyn Mac Donald-Bill Mac Donald A2. Beverly Santos-Sheryleen Grothus BC1. Mary Driesbock-William Whittle A1BC2. Margaret Kennedy-Diana Afflerbach

Sat AM Open Pairs-14.5 Tables A1. Harry Elliott-David Goldfarb A2B1. Anne Schock-Karen Land A2 Jason Kiker-Phyllis Pruet B1. Patricia Kaddatz-Betty Mengle B2. Don Mahoney-Diana Drenner

Fri Eve Charity Pairs-10.5 Tables A1. Karen Fillis-George Fillis A2. Charles Anderson-Tommy Latham B1. Jason Kiker-Phyllis Pruet B2C1. Betty Voss-Mabel Byrnes C2. Margaret Kennedy-Diana Afflerbach

Sat Aft Open Pairs-16.5 Tables A1. David Ticen-Terry Peterson A2. Bill Mac Donald-Marilyn Mac Donald B1. Jason Kiker-Phyllis Pruet B2. W Lynn Swinger-Libby Boeye C1. Mabel Byrnes-Betty Voss C2. Sara Rowe-Sheralyn Humble

Sunday Swiss Teams-12 Tables A1. Ira Hessel-Ellen Hessel-Dave Swarthout-Donna Swarthout A2B1. Melissa Plumb-Mahesh U Maruvada-Marilyn Mac Donald-Bill Mac Donald B2. Jim Dick-Rene Wallace-Charles Anderson-Tommy Latham C1. Karen Land-Felicia Davis-Billie Darnell-Anne Schock

**Unit 197
Lubbock**

Sandi Krahrer

We have had some major changes at the bridge Center due to some serious illnesses of 2 of our directors. Betty

Lowmiller has turned over her games as follows: Tuesday night will be directed by Gina Schultz, who recently passed the directors' exam along with Betsy Bloechl. Gina will also do the Sunday game. Many thanks to Wanda Robinson for filling in on Sundays. Bonta Thompson will continue with her Saturday game and do Wednesdays for right now. All directors will be allowed to play while directing. No criticism of their ethics will be tolerated. Many thanks to Ava Huddleston who recently retired due to health problems. She had directed the Tuesday night game for a few years. A wonderful retirement party was held for Ava Feb. 27. We thank her for her time and wish her a speedy recovery.

Our Sectional will be held March 2, 3, and 4. Marsha Postar has things under control despite an illness. Julie Benson has been such a help and will do her usual management of the kitchen. Please feel free to bring finger foods or make a donation.

Please do not come near the Bridge Center if you are sick. We have many players with impaired immune systems, and they don't need your germs.

70 games were had by Gwen Wright and Jane Giddens, Ava Huddleston and Robert Faulk, Beth Sykes and Leane Thornberry, Howie Huynh and Joe Black, and Howie and Phyllis Kinnison. Congrats to all these fine players.

I apologize for no calendar front, but my husband usually does that and is seriously sick with double pneumonia. He is getting better, but it is slow.

Don't forget the Ace of Clubs Mini McKenney party Sunday, March 11. Please sign up at the Bridge Center as refreshments will be served, and we need to know how many people will attend. That's all for now. Sandi Krahrer

**Unit 201
Sabine Neches**



Linda Briggs

Carolyn Worsham, U201 president, received the 2018 Texas Star Award, February 3 at the Lone Star Regional in Houston, for her many contributions to U201, District 16, and ACBL. She maintains the unit's website, sends out emails to members, and has chaired sectionals and the 2016 Beaumont Gusher Regional. She serves as publicity chairman for District 16. Her charity work includes

not only raising over \$30,000 as the chair for 5 years of the Longest Day, but also raising \$10,500 for U201 members whose houses flooded from Hurricane Harvey. She is also a lifetime member of the ACBL's National Charity Committee.

The Bling Party, January 13, celebrated the sapphire, ruby, and silver "jewels" earned by 27 members. Players flaunted their bling to honor Silver Honorees (1,000 MPs) – Marilyn Adams, Pat Bell, Liz Mackenzie, and Ron Sanders; Ruby Honorees – (1,500 MPs) – Kaz Bell, Vivian Breedlove, Juanita Dean, June Eddingston, Jack Evans, Loretta Gary, Joan Hataway, Beverly Hulsey, Mary Johnson, Juanell Jones, Marian Jones, Bob McGill, Patsy Pierce, Betty Poindexter, Blanche Sibley, Anna Smith, Tim Stelly, Mary Lou Terry, and Jerry Triggs; Sapphire Honorees (3,500 MPs) – Dr. A. Bharathi, Flo Gillispie, Martha Sigler, and Cynthia Stueber. After the meal, 16 tables of bridge resulted in 1st-John and Nancy Smalley, 2

nd Dr. Aiyandar Bharathi and Tipton Golias; 3rd- Flo Gillispie and Martha Sigler. December mentor pairs placing: 1st- Susan Gore and Dr. Aiyandar Bharathi; 2nd- Sandra Allison and Liz Mackenzie; 3rd- Sylvia Street and Pat Bell. Mentor teams placing: 1st- Nixie Lynch, Linda Briggs, Patricia Woods, and Frankie Hall. January mentor pairs placing: 1st- Nixie Lynch and E.W. Sweeney; 2nd- Betty Kirwin and Cynthia Stueber; 3rd- Helen Williams and Tim Stelly. Mentor teams placing: 1st- Sandra Allison, Anna Smith, Carolyn Oliver, and Tim Stelly. 2nd- Patricia Woods, Frankie Hall, Lucille Armintor, and Linda Briggs.

The highest monthly totals for December: Dr. A. Bharathi, Sandra Allison, and Nancy Smalley. January: Nancy Smalley, Dr. A. Bharathi, and John Smalley. Plans are underway for the 2018 Beaumont Spindletop Sectional, March 8-10, chaired by Kris Cherry and Sandra Allison. Tournament information is available at http://www.u201.org/tourn_info.htm.

Members are also looking forward to Susan Gore's Life Master Party on March 24; and the 70th Neches River Festival King's Luncheon hosted by the Beaumont Bridge Studio on April 13.

**Unit 204
Fort Concho**



Larry Hettick

February was an exciting month to play bridge in San Angelo bridge players! Kudos to Chris Compton and Mark Levine who got top scores for Friday morning and evening stratified pairs, and to Norma Walker and Suzanne Dorris who took first place Friday afternoon. Saturday, Chris and Mark got top scores in the stratified pairs morning session, Judy Wilde and Vicky Fisher topped the afternoon scores, while Wright Barnebey and Richard Hamm came in first place Saturday Evening. On Sunday, we had 18 tables for the George Finley Swiss Team session, and the winning team included Chris Compton, Carl McGill, Mark Levine, and Jo Smith. Thanks to all who joined us for our annual Texas Independence sectional tournament, and we hope to see you again next year.

Back at our bridge center, Norma Walker reached a major milestone when she topped 5,000 life master points! Norma is not only a great bridge player, she is also a wonderful asset to our local bridge community. She has served as on our board of directors, has been a club manager and she has been our tournament director. While she is one to shun the spotlight, Norma has also been a great help behind the scenes and is always willing to help novices improve their game when asked. Congratulations Norma, and thank you for all you do!

We'd also recognize like to recognize three teams who earned excellent scores at the Cactus Club since our last newsletter: Theresa Knoche and Karen Voight scored a 72.5% game on the same night that Carol Diminnie and Marifranis Watson earned a 69.4 percent game. Karl Wehner and Anna Thomas also turned in an impressive 67.6% game in February.

Finally, our Tuesday night results for 2017: Suzanne Dorris won 17 games in the A tier, and Marifranis Watson won 12 games in the B tier. Carl McGill and Suzanne Dorris tied for highest Tuesday night score with Carol Diminnie and Marifranis—both teams achieved 72% scores in 2017.

Texas Independence

San Angelo
Feb 09-11, 2018
94 players. 112 tables.

- 1 29.92 Marc Levine,
- 2 29.92 Chris Compton,
- 3 18.10 Norma Walker,
- 4 17.62 Will Anthony,
- 5 17.62 Mary Hildebrand,
- 6 16.07 Suzanne Dorris,
- 7 11.90 Vicky Fisher,
- 8 11.90 Judy Wilde,
- 9 11.68 Carl McGill,

10 11.16 Sharon Haney,
Fri AM Stratified Pairs-8.5 Tables
 A1. Chris Compton-Marc Levine A2. Gene Gammill-Flo Curry B1. Will Anthony-Mary Hildebrand A2/3B1/2 Marifrances Watson-Carolyn Reed-Jones A 2/3B1/2 David Watson-Wiley Bunton
Fri Aft Stratified Pairs-16.5 Tables
 A1. Norma Walker-Suzanne Dorris A2. Chris Compton- Marc Levine B1. Will Anthony-Mary Hildebrand B2C1. P Scott Vaughan-Shirley Davenport, C2. Candyce Pfluger-Terri Tedford
Fri Eve Stratified Pairs-11.0 Tables
 A1. Chris Compton- Marc Levine A2. Iris Warren-Peggy Jackson, BC1. Joy Foster- Carol Diminnie B2. Barbara Wright-Nancy Jean Harris C2. Helen Barker, Norman OK; Maxine Todd
Sat AM Stratified Pairs-10.5 Tables
 A1. Marc Levine- Chris Compton A2BC1. Amanda Shaw-Pamela Erskine C2. Edward Grant-Robert Young C2. Beverly Joosten-Darla Mawson
George Finley Swiss Teams-18 Tables A1. Chris Compton-Carl McGill-Marc Levine-Jo Smith A2B1. Will Anthony-Mary Hildebrand-Paul VanHoorebeke-Helen Lauderdale B2. Barbara Wright-Patsy Rogers-Betty Horne- Glynda Groves C1/2 Linda Cole-Frances Grogan-Carolyn Reed-Jones-Suzanne Gates C1/2 Judy Matthews-Joy Hardy-Jerre McAfee-David McAfee
Sat Aft Stratified Pairs-18.0 Tables
 A1. Judy Wilde-Vicky Fisher A2B1. Will Anthony-Mary Hildebrand B2C1. Toni Hurlbut-Linda Reichenau C2. Shirley Davenport-P Scott Vaughan
Sat Eve Stratified Pairs-11.5 Tables
 AB1. Wright Barnebey-Richard Hamm S2. Norma Walker-Sharon Haney B2C1. P Scott Vaughan-Shirley Davenport C2. Dave Holbrook-Karen Voight



Friday Aft Strat Prs Flt A
 Norma Walker & Suzanne Dorris



Saturday Aft Pairs Flt A
 Vickie Fisher, Judy Wilde



Saturday Eve Pairs Flt A&B
 Andrew Barnebey, Richard Hamm



Sunday Swiss Flt C Tie
 Jerre McAfee, Judy Matthews,
 Mike McAfee, Joy Hardy



Friday Morn Strat Prs Flt A
 Friday Eve Strat Pairs A
 Saturday Morn Strat Pairs A
 Marc Levine, Chris Compton



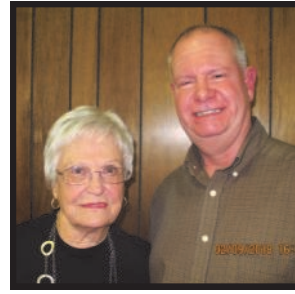
Sunday George Finley Strat Swiss Flt A
 Carl McGill, Chris Compton,
 Marc Levine, Honorary team member
 Mrs. George Finley, Jo Smith



Saturday Morn Pairs Flt B&C
 Amanda Shaw, Pamela Erskine



Friday Aft Pairs Flt C
 Saturday Eve Pairs Flt C
 Scott Vaughan, Shirley Davenport



Friday Morn Pairs Flt B
 Saturday Aft Pairs Flt B
 Mary Hildebrand, Will Anthony



Sunday Swiss Flt B
 Paul Van Hoorebeke, Will Anthony,
 Helen Lauderdale, Mary Hildebrand



Saturday Aft Pairs Flt C
 Linda Reichenau, Toni Hurlbut



Sunday Swiss Flt C Tie
 Linda Cole, Fran Grogan,
 Carolyn Reed-Jones, Suzanne Gates

San Angelo Sectional Winners



Friday Eve Pairs Flt B & C
 Joy Foster, Carol Diminnie



Friday Morn Pairs Flt C tie
 Maryfrances Watson, Carolyn Reed-Jones
 Wiley Bunton, Dave Watson,

Unit 205 Amistad Western Mexico

Mary Ann White

Top 10 Reasons to Visit Unit 205

10. We have a fantastic regional tournament in Puerto Vallarta in November.
 9. We have several sectional tournaments in fun locations like Ajijic, Mazatlan, and Puerto Vallarta.
 8. The bridge is cheap—usually around 50 pesos (that's \$3!) per session at our clubs in Ajijic, Puerto Vallarta, Mazatlan, and Cabo.
 7. Mexico is consistently ranked as one of the friendliest countries in the world.
 6. Our beaches are outstanding.
 5. Expats are fun and interesting people—at least I think so.
 4. You CAN drink the water in most places—and eat some great food, too.
 3. There's always a fiesta somewhere.
 2. Tequila!
- And the number one reason to visit Unit 205:
 You don't have to climb a wall to get here—yet!

Speaking of sectional tournaments, congratulations to Buz Trevor and his crew on another successful sectional in Mazatlan. The tournament was held from January 18–21 at the Playa Mazatlan Hotel. Now in its second year, the tournament has more sponsors and increased attendance from last year, and seems destined to continue. Of the 120 attendees, 20 live year-round or seasonally in Mazatlan, 8 came from Mexico City, 12 were snowbirds or permanent residents from other areas of Mexico, and the rest were Americans and Canadians who came down especially for the tournament. That's a pretty big representation from outside Mexico. Maybe you should consider adding this fun beach town to your tournament schedule for 2019. Alas, there was no photographer at this event, so just picture a bunch of happy, smiling faces. The overall tournament winner was Carol-Ann Halliday of Vernon, BC. Helen Lawson and John Olsen from Lake Chapala also had an outstanding tournament, culminating in a Sunday Swiss win with their partners Diane van Brocklin and Pat Mitchell.

Unit 205 was represented at the District 16 NAP finals for Flight A by Mary Ann White and Jimmy Reynolds. We were delighted to advance to the second day of competition against the likes of Bart Bramley, Mildred Breed, Petra Hamman,

Peggy and John Sutherlin, Ira Hessel, Miguel Reygadas, and Joan Jackson. It was a veritable who's who of bridge and a great chance to play against some real experts. We'll hopefully be back next year for more punishment.

Congratulations to the following LCDBC players who advanced their ACBL ranking: John Betz (Junior Master), Sue Torres (NABC Master), Keith Coates and Charles Chartier (Bronze Life Master). Congratulations also to Norman Webb of Puerto Vallarta who achieved the rank of NABC Master. Way to go!

Club News. Something must have gotten into the water, because we've had a rash of 70% games the last few months. The following players posted 70% games at the Lake Chapala Club during December and January: Jimmy Reynolds and Mary Ann White scored 72.22% on December 4 (5½ tables). Laurie Duck and Marguerite Brown posted 74.21% in the 299r game on December 15 (8½ tables). And Mary Anderson and Mary Ann White hit it big with 75.07% on December 21 (13 tables). At the Puerto Vallarta Club, Stacy and George Jacobs posted 70.15% on December 15 (12½ tables) and 71.53% on December 29 (11 tables). Mary Seggerman and Anne Bergman scored 70.06% on December 8 (10½

tables). Sid Chapnick and Fern Swedlove posted 71.88% on January 3 (5 tables); Barb Smialek and Marcia Rodgers scored 72.24% on January 10 (10 tables); and Robert and Patricia Howell hit the mark with 71.10% on January 24 (13 tables). And at Mazatlan, it was Madelene Blum and Vinette Howell who soared to 80% with 2½ tables on December 18. Madelene Blum playing with Thelma Munroe posted 73% on December 29 (3 tables). Lucia Teulecke and Buz Trevor scored 71% on January 5 (3 tables); Anne Smith and June Keith posted 72.73% on January 16 (12 tables); and Andrew and Deborah Purbrick vaulted to 71.53% on January 23 (11½ tables). At the Los Cabos Club, Gert Balfe and Norm Rosenblatt scored 74.31% on December 6 (5 tables). And at the Baja Bridge Club, William Edwards and Carl Froebel scored 70.50% on December 3 (6 tables), while Judy Haid and Suzette Bahar posted a very nice 76.08% on December 5 (6 tables). Whew, that's a lot of big games!

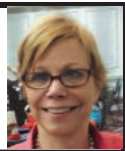
The GNT Qualifier on January 23 at the Lake Chapala Club was won by Mike Roney, Laurie Duck, Marguerite Brown and Bernita Cooper. Lake Chapala also held an IMP Pairs game on December 8, which was won by Mary Anderson and Dagmar Rettberg. Good going!

Lake Chapala and Puerto Vallarta both participated in STaC week from December 11–17. LCDBC players earning extra silver points for their performance at the District level included: Doug Oke and Ann Szarka, who finished second in B on Monday, December 11; Donnie van Rooy and Philip Nowell, and Donna McElroy and Jeane Treloar, who finished 6th and 7th overall on Tuesday, December 12; Mike Roney and Stephen Segall, and Louise Morel and Catherine Gonzales, who came in 2nd and 4th overall on Thursday, December 14; and Roger Buckland and Huguette Joly, who were first in C on Thursday, December 14. From the Puerto Vallarta Club, Barbara Morin and Vito Perillo, and Anne Bergman and Arthur Page, finished third and fourth overall on Tuesday, December 12; while Stacy and George Jacobs topped the field for first place overall on Friday, December 15. Way to cash in those silver points!

And, finally, the Lake Chapala Club started a new 499r game on Monday afternoons, which is averaging 11 tables. Thanks to all who are participating. We hope to keep seeing you at the club!

Unit 207
Austin

Sandy Potts



News in Austin is available at:
www.austinbridge.org
www.bridgecenteraustin.com
www.d16acbl.org/D16_Scorecard.html

Upcoming events:
Feb. 10-11: Unit sponsored Non-Life Master sectional
Feb. 17: Unit annual meeting at 1:00. (The game afterwards is free to Unit members who attend the meeting!); Lecture by Paul Tobias at 12 noon
March 10: New Life Master recognition for those receiving LM status in 2017. This event is free to those NLMs who play on this day!
April 14, 2018: Unit qualifying GNT event at the BCA

There are some new pairs in town. The Unit-sponsored Mentee/Mentor Program has been organized for 2018 by Melinda Simmen. Pat Berry did an excellent job the last couple of years and is now passing the torch to Melinda. These pairings may play at any Unit club game up to twice a month from January through May. The Unit pays for the Mentor's games. Mentors are to give guidance and answer questions. Mentors are to serve as supporters of the duplicate transition and they are not supposed to be teachers per se. Thank you all for pairing and we wish you some "good bridge experiences!"

Those participating in this **one-time mentee opportunity** are:
Charlene Coor/Martha Norman, Judy Devore/Pat DiSanza, Dorothy Foster/Barbara Vervenne, Linda Gaston/Julie Valentine, Diane Hamilton/Ken Davis, Maryellen Holbrook/Rick Clements, Catherine Howard/Pat Berry, Roberta Kauffman/Barbara Rodriguez, Terrie Kolvoord/Jerry Barrett, Ron Kunkel/Paul Tobias, Suzanne Matthews/Stam Pushkarsky, Sueellen McNally/Bob Allen, Gail Miller/Flora Pettit, Julie Morris/Julie McKenna, Karen O'Shea/Dean Truair, Mary Fran Pena/Joyce Cooper, Carole Preston/Larry Franz, Kelly Price/Pam LaShelle, Jim Reed/David Davis, Audrey Romonosky/Nola Ray, Nancy Schiller/Jim Glathar, Sandi Searls/Mickey Goldwater, Mary Wallace/Lee Hilton, Terry Whorton/Barb Clements and Ellin Wilson/Harry Ingham. Can you believe that we have 50 participants this year? Austin rocks!

The idea is that mentees become mentors in the program as a "way of giving back to the bridge community." Many new friendships have formed over the years and it's a delight to see the progress of so many players!

Milestones: **100 points:** Bob Allen, Sheryl Miller; **200 points:** Simone Scumpia; **Bronze Life Master:** Linda Garrett, Robin Tucker; **Silver Life Master:** James Moody, Tod Pontius; **Diamond Life Master:** Louis Sacher. Way to go! The bridge community supports you!

Did you know that Curtis Hitt and his sidekick wife, Judy, participated in the Polar Bear Club on New Year's Day? That means jumping into Barton Springs on the coldest New Year's Day in recent Austin history! Yikes! Low that day was 25 degrees. Brrrrrr.

The *Austin American Statesman* had a wonderful article about Lee Stokes

Hilton baking cookies with her grands? Lee even has a kitchen closet dedicated to sprinkles, dragees, cookie cutters, and you name it for those sweet confections. Let's talk her into creating some wonderful bridge-themed cookies. Her passion is our gain!

Did you know that Scott Humphrey, Laura Delfeld, Mary Anne Laier and Dick/Diane Jones sometimes offer bridge cruises? If you have never experienced one of these, you might consider getting a partner and/or a group together and planning a great trip! Good instruction, good food, time for playing bridge or going on excursions. What else is there?

Ever wonder what Theda Cook does when she's not playing bridge at the table or on-line? She plays poke-mon! And, according to Theda, "she's good at it!" I enjoy hearing about the extras folks do away from the table. Who would think this "absent minded professor-type" would play poke-mon? Makes me smile!

Glad to see Flora Pettit back at the bridge table! Having friends like Barbara Vervenne, Gayle Moyers, and George Watkins makes for a speedy recovery. Flora is missed when I don't see her for a bit! The flu is especially virulent and wide spread this year. Wash or sanitize your hands often. Stay home if you're not well. I'll do the same!

The January Austin Sectional had some great organizers behind the scenes: Jo Dee Bowen, Rachell Jackson, Martha Norman and many others. Have you noticed that our caddies seem to somehow know a bridge player either by their gene pool or by some other association? Thanks to Nancy Joe and her daughter, Laura, for making our event work so well. Saw a friend of Laura Joe's from preschool days, Matthew, and a grandson of Martha's, Nolan, hoping to the call for a caddie and each helped in so many ways. Also saw Rachell Jackson's granddaughter, Mina, caddie again. Have a nice relative who might enjoy the caddie experience, please let Nancy Joe know. She works wonders! We so appreciate these young people!

By the time you are reading this, Curtis Polk and Paul Tobias will have given some intermediate/advanced lectures for the Saturday Unit monthly series. Please let them know if you enjoyed their discussion. Have an idea for a future lecture, contact Tracy Bruce.

-How about seeing the Scorecard in color?
Ken MacMorran, our tireless web master, has a link to the online *Scorecard* on the Unit website: austinbridge.org. Click on the Scorecard link on the top left. The great thing about this is that **photos are in color**. These could be sent to family/friends. Who knows? Maybe a relative/friend will be encouraged to play bridge, and we all love new players!
Ken has also added new buttons on the left side of the Unit website: Mini-McKenney, Ace of Clubs, Milestones, Masterpoints, etc. Be sure to check it out!

Deceased:
Mickie Robinson. Mickie was a fine lady who played bridge up until a couple of years ago. She was 102. I asked Flora Pettit about Mickie and she told me that she was the only player who ever delivered her a handwritten thank you note for baking a cake for her birthday celebration. This thoughtful, cordial

woman will be missed by many of us.

Jim Browne. Jim was an intellectual person who served as an elderly statesman of the discipline of computer science. His family tagged him with "nerd" status before that term was invented. Jim was a family man who was a devoted care giver to his wife and he had an unyielding strength of character. This man gave to truly needy graduate students and family members. He will be missed by many in the UT community and so many other aspects of the Austin bridge community.

Dave Garman. Enjoyed this man so much. He was always gracious, and I will miss his pleasantries at the table. Many games and many good memories of this fine gentleman. I will miss you, Dave!
He lived the saying that "Life is not a race, but a journey to be savored." He played golf, tennis and excelled at bridge, which he delighted in teaching to others.

Austin Winter

Jan 04-07 2018
323 players. 395 tables.

- 1 37.18 Kenneth Schutze
- 2 34.22 Nancy Joe
- 3 32.57 Lynn Baker
- 4 32.57 Karen McCallum
- 5 31.53 James La Fountain
- 6 30.10 Tobi Sokolow
- 7 30.10 Claudette Hartman
- 8 27.65 Paul Tobias
- 9 25.43 Tom Breed
- 10 25.00 Richard Ware
- Thurs Morn 299er Pairs-9.5 Tables**
AB1. Michael Rainbird-David Goodwin AB2. Sue Alt-Cindy Walthall C1. Kelly Price-Jean Durocher C2. Ken Hanson-Curt Wyman
- Thurs Morn Open Pairs-22.0 Tables / Based on 32 Tables A1.**
Stephen Toplansky-Kenneth Schutze A2. Tobi Sokolow-Claudette Hartman B1. Mark Rosen-Alick Einav C1. Genie Nyer-Nancy Ring C2. James Glathar-Jo Dee Bowen
- Thurs Morn Swiss Teams-12 Tables A1.** Venkatrao Koneru-David Ticon-Donna Swarouth-Dave Swarouth A2. Nancy Joe-Lynn Baker-Geoff Blandy-Karen McCallum BC1. Sharon Dameron-Pravina Jani-Augustyn Ortynski-Laura Craft BC2. Elisabeth Kay-Mike Vivian-Charlotte Schuepbach-Chip Franck
- Thurs Aft Open Pairs-19.5 Tables / Based on 28 Tables A1.** Ann McDougal-Eleanor Sherwyn A2. James La Fountain-Richard Clarke B1. Pam Phillips-Kathy McCabe B2C1. Genie Nyer-Nancy Ring C2. Jerry Barrett-Loren Nyer
- Thurs Aft 299er Pairs-8.0 Tables**
AB1. Marie Russiello-Emil Russiello AB2. Cindy Walthall-Sue Alt C1. Curt Wyman-Ken Hanson C2. Terry Whorton-Charlene Coor
- Thurs Aft Swiss Teams-15 Tables A1.** Venkatrao Koneru-David Ticon-Donna Swarouth-Dave Swarouth A2. Beverly Santos-Charles Jefferson -Jerrold Harrington-C David Mitchell B1. Richard Frankeny-Diana Frankeny Norman-Anita Albert B2. Arthur Widen-Jane Collins-Steven Andersen-Tricia Kane C1/2 Sharon Dameron-Pravina Jani-Augustyn Ortynski-Laura Craft C1/2 Gary Amaon-Paula Amaon-Charles Welch-Bunny Welch
- Thurs Eve Open Pairs-7 Tables**
ABC1. Shawn Drenning-Jarek Langer AB2. Daniel Baker-Theda Cook C2. Thomas Hughes-Leilani Rose
- Fri Morn Open Pairs-27.0 Tables / Based on 39 Tables A1.** Paul Tobias-Louis Sachar A2C1. James Moody-John Moore C1. Margaret Downey-Nancy Ramsey C2. Orlin Johnson-Robert Caldwell III
- Fri Morn 299er Pairs-12.0 Tables**



Austin Spring Sectional
May 10 - 13, 2018



Holiday Inn Austin Midtown
6000 Middle Fiskville Road, Austin, TX 78752

Thursday, May 10

Stratified Swiss Teams, single session 10am, 2:30pm
Stratified Open Pairs, single session 10am, 2:30pm

Friday, May 11

Stratified Swiss Teams, single session 10am, 2:30pm
Stratified Open Pairs, single session 10am, 2:30pm

Saturday, May 12

Two-session Bracketed Swiss Teams 10am, 2:30pm
Stratified Open Pairs, single session 10am, 2:30pm

Sunday, May 13

Strati-flighted A/(X=0-3000) Swiss Teams 10am and TBA
Bracketed Swiss Teams (0-2000) 10am and TBA
Lunch provided between Sunday sessions.
Pictures of section winners posted at austinbridge.org.

Stratifications (pair and team games based on average MPs)
Open Pairs/Stratified Swiss: A: 2000+, B: 750-2000, C: 0-750
Sunday Swiss - Director's discretion on the A/X break; 7 teams/bracket
General Convention Chart except Midchart for A/X Swiss Teams
Entry Fees \$12/session (\$16 for unpaid members, ACBL requirement) \$120 Sunday Swiss Teams

Co-chairs

Julie McKenna, vandjmck@yahoo.com, 512- 903-517-6400
Rachell Jackson, rachellann.tx@gmail.com, 512-351-1060

Partnership Chair:

Martha Norman, mellenrowe@gmail.com, 512- 917-3534

Director in Charge: Scott Humphrey

Hotel Information

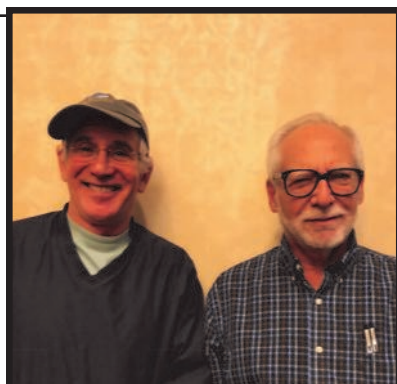
Holiday Inn Austin Midtown
6000 Middle Fiskville Rd, Austin, TX 78752
Bridge Rate - \$94 through April 25; Phone
512 451-5757 or 888-300-6273
Fragrance free tournament, please.

- ABC1. Ken Hanson-Curt Wyman
- ABC2. Beverly Miller-Pam Pannell
- Friday Bracketed Swiss-1-7 Tables**
1. Claudette Hartman-Tobi Sokolow-Kenneth Schutze-Stephen Toplansky
2. Nancy Joe-Lynn Baker-Christoph Eick-Karen McCallum
- Friday Bracketed Swiss-2-9 Tables**
1. David Goodwin-Rose Goodwin-Tom Bell-Cindy Bell 2. Sharon Dameron-Pravina Jani-Laura Craft-Augustyn Ortynski
- Fri Aft Open Pairs-24.0 Tables / Based on 33 Tables A1.** Swadesh Mahajan-Kalpna Sutaria A2. Elizabeth Tobias-Geoff Blandy B1. Jerry Barrett-Frank Floca B2. Tom Smith-R Harry Akin C1. George Steele-Sylvia Sanders C2. Simone Scumpia-David Davis
- Fri Aft 299er Pairs-9.0 Tables**
AB1/2 J Patrick Finnigan-Tracy Bruce AB1/2C1 Annetta Hughson-Helen Pillifant C2. Mary Bailey-Jenny Kimball
- Fri Eve Open Pairs-5.0 Tables**
AB1. Eric Goff-Neil Cohen AB2C1. Thomas Hughes-Mark Anderson C2. Shawn Drenning-Jarek Langer
- Sat Morn Open Pairs-20.5 Tables / Based on 31 Tables AB1.** Terri O'Brien-Anita Albert A2. Gary Powell-David Sokolow B2 James Moody-Richard Clarke C1. Richard Clements-Barbara Clements
- Sat Morn 299er Pairs-10.0 Tables**
ABC1. Curt Wyman-Bob Allen
ABC2. John Graves-Phyllis Graves
- Sat Aft Open Pairs-19.5 Tables / Based on 29 Tables A1.** Paul Tobias-Pam LaShelle A2. Josephine Grabow-Robbie Borchers B1. Anita Cokins-Ellen Meyer B2. Michael Harris-Sandra Harris C1. Mark Anderson-

- Meg Putman C2. Thomas Hughes-Leilani Rose
- Sat Aft 299er Pairs-9.0 Tables**
ABC1. Marcy Wallace-Candace Jacobson ABC2. Celia & Paul Fallon
- \Saturday Bracketed Swi-1-1** 1. Jack Lacy-Tom Breed-Jim Hilton-Kenneth Schutze 2. James La Fountain-Richard Ware-Charlene Sands-Virgil Massey
- Saturday Bracketed Swi-2-7 Tables**
1. Ken MacMorran-Sharon MacMorran-Richard Frankeny-Diana Frankeny 2. Buddy Ellisor-Becky Ellisor-June Mengden-R Harry Akin
- Saturday Bracketed Swi-3-11 Tables**
1. Rita Wiegenstein-Inez Grider-William McIndoo-Don Grider 2. Arthur Widen-Jane Collins-Steven Andersen-Roger Schnabel
- Sunday A/X Swiss-19 Tables / Based on 42 Tables A1.** Terry Riely-Carolyn Riely-Richard Ware-James La Fountain A1.. Sam Dinkin-Lynn Baker-Nancy Joe Austin ; Karen McCallum X1/2 Daniel Baker-Joyce Cooper-Stan Pushkarsky-Sandy Potts X1/2 William Charowhas-Bob Bockemuehl-Theda Cook-; Yaouang Zhu
- Sunday Bracketed B Swi-1-7 Tables**
1. Ken & Sharon MacMorran-Richard Frankeny-Diana Frankeny 2. Robert Tyler-Steven Andersen-Kathryn Levihn-Gloria Wilson
- Sunday Bracketed B Swi-2-7 Tables**
1. Sharon Dameron-Thomas Smith-Pravina Jani-Laura Craft 2. Rita Wiegenstein-William McIndoo-Billie Ogens-Karen Oberling
- Sunday Bracketed B Swi-3-9 Tables**
1. Nell Sanders-Harriett James-Rachell Jackson-Barbara Sterling 2. Michael Rainbird-Nora Fallon-Tom Bell-Cindy Bell



Thursday Morn Open Pairs Flt A
Kenneth Schutze, Stephen Toplansky



Fri Morn Open Pairs Flt A
Louis Sachar, Paul Tobias



Fri Aft Open Pairs Flt A
Kalpana Sutaria, Swadesh Mahajan



Saturday Aft Open Pairs, Flt A
Paul Tobias, Pam LaShelle



Sun AX Swiss Flt A
James LaFountain, Richard Ware
Terry & Carolyn Riley



Thursday Morn Open Pairs Flt B
Alick Einav, Mark Rosen



Thursday Aft Swiss Flt B
Richard & Diana Frankeny,
Anita Albert, Martha Norman



Fri Brkt Swiss Teams Brkt 2
Cindy Bell, Rose Goodwin,
Tom Bell, David Goodwin



Fri Aft Open Pairs Flt C
George Steele, Sylvia Sanders



Fri Morn Open Pairs Flt B
James Moody, John Moore



Sat Aft Open Pairs Flt C
Mark Anderson, Meg Putman



Sat Brkt Swiss Teams Brkt 3
Rita Wiegenstein, Inez Grider,
Bill McIndoo, Don Grider



Sat Morn Open Pairs Flt C
Richard & Barbara Clements



Sat Brkt Swiss Brkt 2,
Sun Brkt Swiss Brkt 1
Ken & Sharon MacMorran,
Richard & Diana Frankeny



Sat Morn Open Pairs Flt B
Terri O'Brien, Anita Albert



Sun AX Swiss Flt X
Joyce Cooper, Sandy Potts,
Dan Baker, Stan Pushkarsky



Sun Brkt Swiss Brkt 2
Sharon Dameron, Pravina Jani,
Laura Craft, Thomas Smith



Sun Brkt Swiss Brkt 3
Harriet James, Rachell Jackson,
Mel Sanders, Barbara Sterling



Fri Aft 299er Pairs (Tie)
Annette Hughson, Helen Pillifant



Thursday Morn 299er Pairs
David Goodwin, Michael Rainbird



Thursday Morn 299er Pairs
Jean Durocher, Kelly Price



Friday Morn 299ers
Ken Hanson, Curt Wyman



Sat Aft 299er Pairs
Candace Jacobson, Marcy Wallace



Fri Aft 299er Pairs (Tie)
Pat Finnigan, Tracy Bruce



Thursday Aft 299er Pairs
Marie & Emil Russiello



Sat Morn 299er Pairs
Bob Allen, Curt Wyman

Unit 224
Fort Phantom



Bette Byrd

This is the year of the "Weird Weather", with snow where it should not be and freezing temperatures making it difficult to heat the bridge center. Bridge did go on as much as possible but a few cancellations were necessary. Thankfully for us, there was not snow or enough rain to cave in the roof, as it still has not been repaired.

The Fort Phantom unit games are no longer directed by Beverly Walker. Thanks to other directors who have substituted for the games: Darla Mawson, Coleen Grisham, Ed Grant, and Bette Byrd. There are two games belonging to the unit which are held on Monday night and Friday afternoon. Tuesday, Wednesday, and two games Thursday are propitiatory games owned by Bridge Etc, Beverly Walker, and Jackie Sonnenburg.

Speaking of Fort Phantom, our unit was named for the fort following the lead of San Angelo, who is Fort Concho. Fort Phantom got its name from the Legend of the soldiers stationed at the new fort built before Abilene was established. About thirty miles north of the present day city, sitting around campfire, the soldiers saw a tall white figure. One yelled out, "A phantom on the hill". A name for the new fort and later a lake and a cemetery was established. All are said to be haunted by the "Lady of the Lake" who searches for her long-lost love. A team of ghost hunters are certain their detecting equipment captured "an other worldly sound" of a man grumbling "Get out of here!" and a woman asking "Why did you say that?". This information is from Abilene Scene, September-

October, 2015.

Some of our members are attending the Houston Regional. We wish them luck and lots of wins. So far Ed Grant and Bob Young have won about 10 points, Jo Smith and Tony Haddad have won over 5 and Pat Ramsey has gotten some also. Jo Smith attended the Myrtle Beach Regional and won 57.51 points playing with Tony Haddad previously from Abilene. Melba Long and Bette Byrd played in the Inter Club Championship on January 13 and placed 13th across ACBL. Lera Lewis and Coleen Grisham won locally, but scored against the field, Melba and Bette won out. This was a fun new game. Thanks Coleen for always doing the special events.

LOOKING BACK:

Party honoring five new life masters: Martyne Turner of Albany, Dale Lain, Jackie Sonnenburg and Bea Duggan. Grant National Team game was held with Ann Murray, Mary Anna Mark, Verle and Eddie Rice winning Flight B and Gary Paterick, Delbert and Pat Hess and Lee Wiltrout winning Flight C. The Unit voted to support the Nationals to be held in San Antonio in 1999 by sending \$100.00 to purchase "continuous Pair game" to be called Ft. Phantom Pairs. A building lease was presented by the committee and read and approved. This lease sets forth terms for the two clubs leasing the building from the Unit. Mary Tecson was named as Unit Recorder For your info: December 1997 Income \$1508.00 Expenses \$995.00 Checking Account balance \$4405. No mention of CD's.

One of our players, Margie Dawley, took up duplicate after retiring from teaching school where she only played party bridge. Margie was born in Dallas Co. in 1922 and when she was a freshman in Texas Tech in

1937, met the love of her life, James Dawley from Mississippi. World War II came along and James joined the Navy and they married. In 1950, the family moved to Abilene with two boys and one girl and Margie taught school. Margie says she has a lot more to learn, but enjoys the challenge of duplicate bridge. A little aside to this is that her daughter, Jeanne Dawley, is playing in the Houston Tournament and has won over 6 points. Don't we love it when our children take up our favorite activity. We love having Margie as a player in all the games.

We held the International Fund Game today and the first of the new REACH games. Placing 1st with a 64.35% game were Peggy Ford and Betty Henderson. 2nd were Bette Byrd and Coleen Grisham and Mike Sadler and Alan Wakefield were 3rd in A and 1st in B with Desa Lee-Laird and Coyita Bowker winning 4th in A and 2nd in B. More about this next time and I hope all of you took time to take part;

Bette Byrd

Unit 225
East Texas



Greg Cooley

SEVENTY PERCENT GAMES

Nannie's Bridge House reported that Dan Cowling and Selma Dawson had a 71.88% game on January 22. Wow, Bonnie Magee & Chester Neel had two big games recently: a 70.24% game on Dec. 13th and a 72.92% game on Jan. 19th at the Cedar Creek Lake Bridge Club. Two novices at the Nacogdoches Duplicate Club, Phillis Rude and Gloria Oliver, had a 72.92% game on Monday, December 18th.

UNIT 225

Congratulations to Sandy Hillard who received the Texas Star Award on behalf of Unit 225 at the recent Houston Regional Tournament in recognition of her many contributions to bridge.

The Tyler, Athens and Pittsburg Clubs all participated in the ACBL REACH (Regional Event At Club House) games held Feb 3-9. This provided players who registered with REACH an opportunity to compete for gold points at their local clubs. This was the initial REACH kick off allowing all ACBL clubs to participate. It will be interesting to see Unit 225 players' response and feedback to the newly offered program so stay tuned.

DOTTIE PERKLE DUPLICATE BRIDGE CLUB

Eleven tables of bridge friends came together at DPDBC to help Lynn Walker celebrate her 92nd birthday.

NANNIE'S BRIDGE HOUSE IN CANTON

Neva Davis is the club champion for 2017. Neva won the club championship by winning the most points for the year.

LAKE CYPRESS SPRINGS BRIDGE CLUB

Linda Harrison continued teaching free Duplicate Basic Bridge classes prior to our Monday games. We welcomed our newest ACBL member and new duplicate player, Georgia Gibson.

PITTSBURG DUPLICATE BRIDGE CLUB

On January 23 Pittsburg hosted the ACBL wide Junior Fund

PDDB enrolled in the R ROSE CITY DUPLICATE BRIDGE CLUB Feb. 2018 ScoreCard Article for The Bridge Studio at Cedar Creek

BRIDGE STUDIO AT CEDAR CREEK LAKE

Our Christmas Party brought in contributions of 40 toys & \$450 for Gun Barrel City Toys for Tots Campaign. The studio has supported this charity for many years.

We lost one of our most loyal players. Pansy Blakely passed away in early January. Patsy Gordon was Pansy's partner when she attained her Life Master. She played bridge with many of us over the years, but her regular weekly partners were Kathy Weaver, Greg Cooley, Patsy Gordon and her grandson Jared who came to live with Pansy as her health was failing. Because of Jared, she was able to continue to live independently and enjoy her church and bridge friends. We will miss her sweet smile and cordial personality.

ROSE CITY DUPLICATE BRIDGE CLUB

Rose City DBC celebrated Sue Ritschel's Birthday February 2nd.



Piney Woods Sectional

Longview
Feb 15-17 2018
131 players 122 tables.

- 1 17.41 Dorothy Nuttall
- 2 15.75 Mary Hubbard
- 3 13.00 Bobbye Goodman
- 4 12.67 Stewart Angel
- 5 12.67 Jonathan Ernest
- 6 12.34 R Bruce Shields
- 7 12.34 John Parish
- 8 11.34 William Young III
- 9 10.03 Puddin Barnes
- 10 10.03 J Bachman Nabors III

Thu Morn Open Pairs-11.0 Tables / Based on 16 Tables A1. John Parish-R Bruce Shields A2B1. Shirley Shelton-Peggy Singer B2C1. Margaret Ellis-Barbara Wood C2. Marjorie Kemp-Charlie Kemp

Thu Morn 499er Pairs-5.0 Tables-ABC1. Patsy Alexander-Linda Tillery AB2. Ann Haynes-J Denise Hull C2. Stephen & Irene Clutter

Thu Aft Open Pairs-12.5 Tables / Based on 17 Tables A1. Diane Duncan-Mike Graham A2B1. Ennis Dyess-; Nancy Green B2. Peggy Singer-Shirley Shelton C1. John Lawrence-Betty Lawrence C2. Jeff Brown-Rosemary Mize

Thu Aft 499er Pairs-4.0 Tables A1. Peggy Painter-Cled Painter B1. Mary Ramsey-Jo Ellen Wade

Fri Aft Open Pairs-11.5 Tables / A1. Dorothy Nuttall-Bobbye Goodman A2B1. William Young III-Mary Hubbard B2C1. Curtis Bourland-Cassie Jean C2. Shreedhara Ramarathnam-Cheryl Landers

Fri Aft 499er Pairs-7.5 Tables AB1. Emily Bonner-Carol Sanderson A2. Hugh Ilgenfritz-Glenda Ilgenfritz B2. Vicki Angel-Fredye Alford C1.

Sherry Russell-W Gene Villyard C2. Janvan Jenkins-Sandra Jenkins

Fri Morn Open Pairs-13.0 Tables / Based on 21 Tables A1. J Bachman Nabors III-Puddin Barnes A2. Mary Hubbard-Dorothy Nuttall BC1. John Lawrence-Betty Lawrence B2.

Earlene Boddie-Jackie Carroll C2. Richard Bryant- Charles Spradlin

Fri Morn 499er Pairs-7.5 Tables AB1. Carol Sanderson-Emily Bonner AB2. Lawrence Brough-Susan Sensenbach C1. Janvan Jenkins-Sandra Jenkins C2. Jo Ellen Wade-Mary Ramsey

Sat Bracketed Swiss-Bkt 1-7 Tables
1. Linda Spangler- Stewart Angel-Jonathan Ernest-Michael Murphy 2. Beth Hankins-Charles Spradlin-; Richard Bryant- Beryl Cobb

Sat Bracketed Swiss-Bkt 2-7 Tables
1. Sally McAnulty-Sue-Cassie Jean-Curtis Bourland 2. Sandra O Bannon-Colleen O'Neal-Joyce Hahn- Elizabeth Smith

Sat Bracketed Swiss-Bkt 3-11 Tables
1. Jeanie Nutter-Sarah Meredith-Carol Sanderson-Emily Bonner
2. Lawrence Brough-; Cynthia Tubbs-Susan Sensenbach-Pud Patterson

E/W winners were 1st in A and B – **Marilyn Matthews** and **Pat Lawrence**; 2nd in A and B – **Shirley Davenport** and **Jay Maher**; 3rd in A and B and 1st in C – **Linda Scarpelli** and **Greg Keys**; 4th in A – **Bob Bacon** and **Audie Brooks**; 5th in A, 4th in B and 2nd in C – **Kay Arrell** and **Patti Heard**.

We kicked off 2018 with a belated New Year's party on January 4. We had nine tables, with most players munching on finger food. N/S 1st in A – **Jean Pistole** and **Scott Vaughn**; 2nd in A – **Ann Servatius** and **Paula Bayley**; 3rd in A and 1st in B and C – **Linda Buzan** and **Betty Moore**; tie for 4th-5th in A and 2nd-3rd in B – **Dorothy Brenneman** and **Paula Baggett**; **Helen Davis** and **John Seymour**; 2nd in C – **Sandy Hill** and **Debbie Conner**. E/W 1st in A and B – **Greg Keys** and **Deborah Brookins**; 2nd in A and B – **Belle Harris** and **Brenda Harrison**; 3rd in A – **Charlie Grimes** and **Linda Scarpelli**; 4th in A 3rd in B, and 1st in C – **Audie Brooks** and **Nancy Braskett**; 2nd in C – **Bill Brooks** and **Pat Lawrence**.

Other parties were held in December in both Midland and Odessa. Odessa started the year with a Black-Eyed Pea party on December 30. Midland had its usual salad luncheons on the third Tuesdays.

We want to congratulate our new Goodwill Ambassadors, **Bill Brooks** and **Debra Jones**. Both have contributed time and effort to the game of bridge in the Permian Basin. And we certainly want to celebrate our new Lone Star, **Marlene Blumentritt**. Marlene works on calendars, supplies, and communication with ACBL, and she plays and/or directs several times a week.

On January 23, we held the ACBL-Wide Junior Fund Game in Midland with six tables. First place winners were **Greg Keys** and **Linda Scarpelli**, and second place were **Betty Dickerson** and **Martha Poss**.

We have had several players travel to play in Regionals in their quest for gold. **Belle Harris**, **Sarana Savage**, **Marilyn Higgins**, and **Kay Sewell** went to Albuquerque January 15-19. The Lone Star Regional in Houston drew **Linda Buzan**, **Betty Moore**, **Linda Scarpelli**, **Greg Keys**, **Audie Brooks**, **Bill Brooks**, **Mike Robinson**, **Belle Harris**, and **Linda Aaron** (a former Midlander).

President **Lonnie Yee** reports that Midland has started on plans to host the Tall City Sectional on June 8-10 at Midland College.

We had four games of 70% or better in December. On December 4, **Charlie Grimes** and **Ann Servatius** had a 70.36% game. On December 13, **Flo Curry** and **Marlene Blumentritt** earned 70%. On December 17, **Flo Curry** and **Marilyn Matthews** got 73%. And on December 28, **Deborah Brookins** and **Greg Keys** had a 73.13% game.

Saturday lessons have started again. Beginner lessons are taught by **Belle Harris** and intermediate lessons by **Ann Servatius**. The lessons are very inexpensive and are followed by a short game for novices. Lessons for elementary children in Greenwood ISD are continuing on Wednesday afternoons.

Finally, I want to thank **Belle, Marlene**, and **Lonnie**, who provided the information for this month's column. I really appreciate your getting "stuff" to me, in spite of family illness and trips out of town. Happy spring, and may all your hands be biddable!

**Unit 233
Central Texas**



Helen Simonette

A tribute to MIKE BUKALA. Mike Bukala died on January 15, 2018 at age sixty-nine succumbing to leukemia after surviving surgery for both lung and brain tumors. Dale Allen notified unit members that evening in a poignant e-mail about Mike.

Mike grew up in Waco where he attended high school before entering Rice University as a history major. He later earned a Master's degree from the University of Texas. Though his major love was history, he spent most of his career with the Brazos River Authority. He was especially committed to the importance of water conservation. In the early 1990s he was responsible for initiating the *Major Rivers Water Education Program* in over 1600 elementary schools in the Brazos River Basin. In his retirement years Mike returned to education unlocking the mysteries of math to middle-school students. He was especially rewarded when the parents of one of his students stated that their child said that Mr. Bukala was the "greatest teacher EVER!" Mike said those words warmed his heart.

After Dale's e-mail about Mike, Marilyn Holmes of Sun City wrote the following: "Dale, what a lovely tribute to a man I never knew and didn't understand. You were indeed a good friend of Mike. I am comforted by your kind words about an obviously fine man with an extraordinary talent for bridge. I was pretty much terrified to play against him. I guess that is the ultimate compliment for any bridge player."

The late Sybil Cloudt always spoke fondly of Mike. She was in her seventies when Mike was a student at Rice and just learning the game of bridge. She was his frequent partner when he was home from college. As were others, she was an admirer of his brilliant mind.

Melody Euler who was his frequent partner stated that she felt he had a true photographic memory. He could remember not only his hands, but also the hands of his opponents from games played weeks or months earlier. Mike, a diamond life master, was a mentor to Melody whom we hold at the same level of respect as Mike. Several years ago I mentioned to Melody that I found Mike to be unfriendly. She replied, "He is aware that he has problems with social skills". Sometimes we never know how our words can impact others. After hearing that I began to try to engage him in conversation at the table. He became a different person – no, maybe it was I who changed. I am grateful how Melody's words changed my attitude about Mike. Dale Allen said that in all the years he has played in this unit, he never ever heard Mike speak an unkind word about another bridge player. Mike was a devout Catholic who attended church every day. Tom Corlett confided that when they attended tournaments, Mike would always go to Mass each morning before the bridge game began. Perhaps we can credit Saint Peter for Mike being a legend in Texas bridge.

To mourn his passing he leaves his

wife, Debra and daughter Katherine.



REST IN PEACE, MIKE

**Unit 353
Wichita Falls**



Carolyn Bell

During the cold months of winter we are grateful to spend time indoors playing bridge with friends. It is always a good day for fellowship and a time for enjoyment of a delicious treat or two! A few of our members have been suffering with the flu and other health challenges - Margaret Kirkland, Trudy Downey, Martha Keller, Leon Vaccarella, and Tomie Johnson. You have all been missed at the bridge center! One of our favorite bridge players, Joan Paradise, has moved to Kansas. Joan will always belong to Bridge Unit 353 and, thankfully, she will be back in September for our Tournament. We hope that she surprises us by popping into the bridge center when she comes to North Texas!

We take time to reflect and to set goals in the first months of the year. Our 2018 Board of Directors recognizes that there is a decline of interest in bridge in our city. We are looking for ways to bring in new players to our center. Our goal is to encourage Novice players - those who took lessons, those who are interested in learning the game, and party bridge players who are ready for more challenge to participate. With this in mind we are planning a Novice Game on Wednesdays in order to encourage the beginner players to come, learn, and play without the pressure of the larger group of experienced players. We hope they find that bridge is a wonderful game of memory, challenge, and strategy - and, of course, community!

Another exciting opportunity is the REACH game that ACBL is sponsoring. This game will allow players who are interested in getting Gold Points to try to earn them while playing in their local club. Our club along with the players in Vernon, Texas will be having REACH games in early February. We hope this is a great success for our membership!

Bridge Paradise Master Point Leaders for December are Margie Brown and Faye Morrison with 0.80. Margaret Kirkland and Kathleen Brown had a High Percentage Game of 63.89.

The Bridge Center Master Point Leaders for December were Dave Hertzog with 6.45 and Tomie Johnson with 5.65 master points. The High Percentage Games for December are Lois Roberson and Faye Morrison with a score of 73.44; Margaret Kirkland and Dave Hertzog with a score of 65.48.

The Vernon Duplicate Bridge Club Master Point Leaders for December are Ruth Streit at 6.60, Carole Tucker

at 6.25, and Susan Couch at 6.04. The High Percentage Games for December were played by Susan Couch and Anne Halsey with a score of 73.02; Donna Lorance and Elgy Smith with a score of 65.00; Arvella Storrs and Douglas Jeffrey with a score of 65.00; Carole Tucker and Ruth Streit with a score of 65.00.

The Bridge A-Gap Master Point Leaders for December are Dave Hertzog and Tomie Johnson with 2.48 master points. The High Percentage Games for December are Dave Hertzog and Tomie Johnson with a score of 61.61; Terry Dutton and Patty Holfer with a score of 60.42.

The Suite 16 Bridge Master Point Leaders for December are Faye Morrison at 2.89 and Suzanne Sosa at 2.87. The High Percentage Games for December are Faye Morrison and Suzanne Sosa with a score of 69.79; Suzanne Sosa and Joan Paradise with a score of 67.14.

The December Unit game winners were Tomie Johnson and Dave Hertzog with a score of 68.33; Faye Morrison and Joyce Lo with a score of 64.14.

Heart of Texas

Temple
100 players 99 tables

- 1 17.14 Stan Pushkarsky
- 2 11.44 Anita Albert
- 3 11.43 John Schwartz
- 4 11.43 James Thurtell
- 5 10.23 Mary Adams
- 6 10.23 Jan Hart
- 7 10.12 Stephen Olson
- 8 8.50 Jerry Barrett
- 9 8.06 Sharon Dameron
- 10 8.06 Jarek Langer

Friday AM Open Pairs-12.5 Tables AB1. Anita Albert-Stan Pushkarsky A2. Alta Peck-Robbie Borchers B2. Stephen Olson-Tom Banet C1. Malissa Baugh-Patricia Johnson C2. Billie Ogens-Kay Lynch

Friday AM Swiss Teams-6 Tables A1/2 James La Fountain-Richard Ware-Thomas Corlett-Ethel Corlett A1/2 John Schwartz-James Thurtell-Charlene Sands-Virgil Massey C1. Joe Black-Jarek Langer-Jerry Barrett-Sharon Dameron

Saturday Aft Open Pairs-15.5 Tables AB1. Stephen Olson-Virginia Miller AB2C1. Venu Chintam-Rowland Bartoo C2. Margaret Downey-Nancy Ramsey-Lynn Sykes-Patricia Johnson


Saturday AM Open Pairs-16.0 Tables AB1 Mary Adams-Jan Hart A2. James Evans-Puddin Barnes Brenham B1. Nora Fallon-Laura Craft B2. G Nell Carpenter-Judy Taylor Mathews
Saturday AM Swiss Teams-4 Tables 1. John Schwartz-James Thurtell-Charlene Sands-Virgil Massey

Friday Aft Open Pairs-13.0 Tables AB1. Anita Albert-Stan Pushkarsky AB2C1. Lavona Carter-Joan Cation
Friday Aft Swiss Teams-4 Tables 1. Jarek Langer-Joe Black-Jerry Barrett-Sharon Dameron

Sunday A/X Swiss Teams-6 Tables / Based on 14 Tables A1. Sandy Potts-Stan Pushkarsky-John Moore-Roxann Swenson 2. John Schwartz-James Thurtell-Billy Leeper-Carolyn Pinto

Sunday B/C/D Swiss Teams-8 Tables B1. Sharon Dameron-Jerry Barrett-Gary Anderson-Jarek Langer B2.. Robert Burton-Dolline Burton-Jan Hart-Mary Adams C1. G Nell Carpenter-George Holmes-Pamela Holmes-Judy Taylor Mathews

**Unit 209
Permian Basin**



Ann Parish

Permian Basin bridge players ended 2017 with a wonderful party on December 14. We had a whopping 13 tables! Food was abundant and yummy. N/S winners were 1st in A and B – **Brenda Leonard** and **Patti Witt**; 2nd in A and B and 1st in C – **Andy Bell** and **Bill Brooks**; 3rd in A and B – **Dorothy Brenneman** and **Paula Baggett**; 4th in A and B – **Peggy Cook** and **Mike Houston**; 5th in A and B and 2nd in C – **Linda Buzan** and **Gloria Jackson**.



Friday Morning Swiss Team A
Ethel Corlett, James LaFountain,
Tom Corlett, Richard Ware



Friday Morning & Afternoon Open Pairs A
Stan Pushkarsky, Anita Albert

HEART OF TEXAS SECTIONAL WINNERS



Saturday Afternoon Open Pairs A
Virginia Miller, Stephen Olson



Saturday Morning Open Pairs A
Mary Adams, Jan Hart



Austin Spring NLM Regional May 10 - 13, 2018



**A Unit 207 Event
Holiday Inn Austin Midtown
6000 Middle Fiskville Road, Austin, TX 78752**

NLM Regional Schedule

Thursday, May 10 - Saturday, May 12

Gold Rush Pairs 10:00 AM and 2:30 PM

25% **gold** award for section top in flight A and overall in flight A.

You may play only one session, but you maximize gold points by playing in both sessions.

Sunday, May 13

Bracketed Swiss Teams 10:00 AM and TBA

25% **gold** award for top three teams in each bracket.

You must play in both sessions.

Lunch provided between Sunday sessions.

Pictures of section winners posted at austinbridge.org.

Stratifications: Based on average Pair or Team Masterpoints
A: 300-750 (NLM) B: 100-300 C: 0-100

Note: All players must have fewer than 750 masterpoints and may not be a Life Master as of May 6.

Entry Fees: \$12 per session Thursday-Friday
\$13 on Saturday (includes NABC Surcharge)
\$120 per team for Sunday Swiss, includes lunch
\$4 additional per session for unpaid ACBL members

Chair: Rachell Jackson, rachellann.tx@gmail.com, 512-351-1060

Partnership Chair: Martha Norman, mellenrowe@gmail.com 512- 917-3534

Director in Charge: Scott Humphrey

Hotel Information

Holiday Inn Austin Midtown, 6000 Middle Fiskville Rd, Austin, TX 78752
Bridge Rate - \$94 through April 25; Phone, 512 451-5757 or 888-300-6273

Refer to Texas Capital Bridge Association.

Fragrance free tournament, please.