

American Contract Bridge League District 16 SCORECARD

Bridge News Bulletin for The Texas Regional Conference

San Antonio, Texas

Volume 44, No 1

January/February 2012

Mark Feldman Wins Senior KO, Wold Second; Tobi Sokolow Wins Women's BAM; Peggy Sutherlin and Nancy Passell Second in Women's Pairs



Mark Feldman



Eddie Wold



Tobi Sokolow



Peggy Sutherlin



Nancy Passell

David Sokolow

Senior NABC
Correspondent



The Seattle NABC was fantastic. For the most part, the weather cooperated (almost no rain!). Even better, reservations at Seattle's finest restaurants were readily available. (I can recommend Wild Ginger enthusiastically—it's every bit as good as its hype). Best of all, the bridge gods shined on District 16, especially players from Austin.

Austinite-come-lately Mark Feldman won the Senior KO Teams. In a tense finish, Mark's team beat Houstonian Eddie Wold's by just 5 IMPS over 64 boards. Eddie, of course, is a fixture on the District 16 bridge scene, but you may not know Mark, so let me do the introductions. Mark was born in Cleveland (Ohio, that is). An M.I.T. grad, he has a Ph.D. in economics. For many years, he worked for Bear Stearns; now he works for Fannie Mae. He's married to the lovely Valerie, who teaches economics at U.T., and he has two great kids; his son, Jason, is an NABC champion, too. Please give Mark a warm Texas welcome when you see him next.

Twenty-two-year Austin resident Tobi Sokolow won the Women's Board-A-Match Teams. Unlike the Women's Swiss last spring, where Tobi's team came from behind to win, her team led the BAM from start to finish. Their final margin of victory was 4.75 boards. This win was especially satisfying as Tobi's team had been second in the BAM the last two years (in 2010, by .25 board!).

"Always a bridesmaid, never a bride?" Tobi's win proves it ain't so. More important, it gives her team a bye to the semifinals of the next Women's Team Trials. (Little-known fact: Mark and Tobi graduated from the same high school in Cleveland. Small world, no?). Good going, honey!

Nancy Passell of Plano and Peggy Sutherlin of Dallas were second in the Life Master Women's Pairs, just .72 behind the winners! Nancy and Peggy are no strangers to the winner's circle. Nancy has three NABC wins; Peggy has nine. In addition, both are world champions: Nancy won the Venice Cup in 1991, while Peggy won the Women's Olympiad in 2000.

A number of District 16 players secured top-ten finishes in NABC events. In the Women's BAM, Mildred Breed, Austin, and Shawn Quinn, Sugarland, finished seventh, and Lynn Baker, Austin, was ninth. In the LM Open Pairs, Dallas denizens Bart Bramley and Chris Compton finished eighth and ninth respectively. Bart was also sixth in the Reisinger Board-A-Match Teams. In the LM Women's Pairs, Tobi Sokolow ended tenth. Bob Hamman, Dallas, and Mike Passell, Plano, finished 5/8 in the Senior KO; Dan Morse, Houston, and John Sutherlin, Dallas, were also 5/8 on a different team. Hemant Lall, Dallas, finished 3/4 in the Senior KO, and fifth in the Senior Mixed Pairs. Finally, in the NABC 99-er Pairs, Ed and Betty Cutler, San Antonio, wound up fourth. Congratulations one and all!

The spring NABC will be held from March 15-25 in Memphis. It will be

the first NABC in Memphis, and it promises to be memorable. If you want a break from bridge, however implausible that sounds, you can visit Graceland (home of the late, great Elvis Presley), listen to blues on world-renowned Beale Street, spend an afternoon at the Civil Rights Museum, or explore the bridge museum at ACBL Headquarters, just across the river in Mississippi (free tours will be available). Not to mention that there will be fewer rowdy college kids on spring break in Memphis than there will be on South Padre Island. Just sayin'....

By the time you get this, it will already be 2012, so let me (and Tobi) be the *last* to wish you and all your loved ones a happy, healthy, and fruitful new year.

180.08 Tobi Sokolow
165.58 Bart Bramley, Dallas
149.97 Eddie Wold, Houston
140.00 Mark Feldman, Austin
121.38 Chris Compton, Dallas
108.84 Hemant Lall, Dallas
76.01 Bob Hamman, Dallas
67.99 Dan Morse, Houston
58.28 Nancy Passell, Plano
57.07 Peggy Sutherlin, Dallas
56.51 Greg Hinze, San Antonio
56.19 Tom Breed, Kingwood
51.74 Jack Lacy, Lago Vista
48.52 Lynn Baker, Austin
48.33 Mildred Breed, Austin

Nail Life Master Open

35 Bart Bramley, Dallas

Baze Senior KO Teams

1 Mark Feldman, Austin
2 Eddie Wold, Houston
3/4 Hemant Lall, Dallas
5/8 Bob Hamman, Dallas
5/8 Dan Morse, Houston; John

Sutherlin, Dallas

Mitchell Open BAM Teams

5 Chris Compton
42 Greg Hinze

Womens BAM - 18 Tables

1 Tobi Sokolow, Austin
7 Shawn Quinn, Sugar Land;
Mildred Breed, Austin
9 Lynn Baker, Austin

Reisinger B-A-M Teams

6 Bart Bramley, Dallas

North American Swiss

18 Eddie Wold, Houston
28 Tobi Sokolow, Austin

Blue Ribbon Pairs

29 Bart Bramley, Dallas

Senior Mixed Pairs

5 Hemant Lall, Dallas
17 Bruce Wick-Susan Stubinski,
Houston
18 Petra and Bob Hamman, Dallas
21 Buddy Hanby, The Woodlands
29 Eddie Wold, Houston
33 Dan Morse, Houston



Chris Compton Wins Barry Crane Top 500

Congratulations to Chris Compton of Dallas, who finished 2011 with the most points won by any player in ACBL tournaments. Chris finished with over 2900 points, the final total will be verified early in January.

Dewitt Hudson

District 16
President



tion before it can be acted upon by ACBL.

This will be the last article that I will write as President of District 16. My term will expire in January, 2012. I have enjoyed traveling our District and meeting and playing bridge with such wonderful people from all walks of life, which has made my tenure, one that I will cherish with fond memories.

One of the many goals which we set for this District was to increase membership. In the beginning of 2011, membership was at: 8,985. As of today, the membership has increased to: 9,029. Because of this increase, I can safely say that our District could be rewarded with another Regional in the near future. I would like to thank all the units who worked very diligently to attain this milestone.

BIG D SECTIONAL - Nov. 3-6, 2011 - The tournament was held at the Richardson Civic Center at: 411 W. Arapaho Rd. Richardson, Texas. The tournament was hosted by the Valley View Bridge Club. Gerrie Owen and her committee did an outstanding job. Parking and snacks were more than adequate. The table count for this 4 day tournament was: 494 1/2 tables. Thanks, Gerrie, for a tournament well-run.

TOURNAMENT ALLOCATION - Sectional tournaments are allocated to units. While there are no restrictions on the number of sectional tournaments a unit may conduct, a district must approve the Sanction Applica-

APPRECIATION - Looking back at the twenty tournaments that I attended in our District in 2011, there are many people I would like to thank who made this possible. I thank the district 16 Board members who exemplified a hard work ethic in carrying out their specific duties. I also extend my personal thanks to my wife, Elizabeth, who accompanied me to all these tournaments. In closing, I would like to reminisce about a particular conversation that I had with a bridge player. He asked me, "Dewitt, you have been President of District 16, in 2005, 2006 and 2011, what enjoyment do you get out of being President?" In response to this, I answered that there is a certain satisfaction and enjoyment that I feel when I see things being accomplished in our District. In particular, a bridge player, Betty Marriett, from Port Aransas, Texas, wrote a letter to the Editor to the ACBL Bridge Bulletin that was published in August 2011, p.6, in which she wrote: "I was delighted the other day when I answered the telephone and heard Dewitt Hudson, president of District 16 in Texas, offering me congratulations on making Gold Life Master. What a nice gesture from a great guy. It certainly made my day. Receiving such a phone call makes a person feel that all the hard work of earning masterpoints is worth the time and the cost involved." This is the satisfaction that I get when experiences like this, that have no monetary value, but impact me greatly, that District 16 is moving in a great direction toward the future.

asking partner to show key cards, but *not* the ace of spades (since she had a void). When Janice bid 6C (one or four), Tobi bid 6D, asking her to bid 7 with the queen of hearts. Janice signed off in 6H. That was a big win since the French stopped in four. Janice's hand: Qxx KTxxx T QTxx. Yes, 7C is cold, but no one in either event got there (for the record, two pairs got to 6H, three to 6C, one to 4H, one to 5H, and one to 5C).

Tobi also won the bronze medal in the women's individual, where each

player had to play three boards with each of the other 23 participants. Unlike team or pair events, no private agreements are allowed; everyone must play the exact same card. It makes for interesting bidding, that's for sure. Janice won the gold medal. For a pair that had not played together in almost three years, they did exceptionally well. Even better news: unlike most world championships, this one awarded prize money. I'm looking forward to my Chanukah present this year!

Vacancy in the Board of Governors

A vacancy has been created for the Board of Governors. Anyone wishing to be considered for the position please let the District Board know. The Board of Governors meets three times a year at the Nationals. The District Board will elect the new representative at the January meeting at the Houston regional.

Tobi Sokolow Wins World Mind Games

By David Sokolow

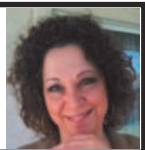
Tobi Sokolow of Austin won a gold medal in the women's teams at the Sportaccord World Mind Games, held in Beijing December 8-16. The US women's team, comprising three pairs chosen by their peers, beat the teams that had won the last four women's world championships: France (2011), China (2010 and 2009) and England (2008). Representing the US were Tobi and Janice Seamon-Molson, Beth Palmer and Lynn Deas, and Kerri Sanborn and Irina Levitina. In the Open event, the US men finished second to the Netherlands, who also won the Bermuda Bowl in October.

Tobi held this hand in the first qualifying round: void Axx AKJxx AKxxx. She opened 1D. Her partner responded 1H. Tobi rebid 3C (game-forcing). Her partner rebid 3H. What would you do? Tobi bid 5S, exclusion Blackwood,

AMERICAN CONTRACT BRIDGE LEAGUE

DISTRICT 16
SCORECARD

Bridge News Bulletin for
The Texas Regional Conference
2826 Barrel Oak
San Antonio, TX 78231

**Newcomer
Reporter**
Mercedes Barker


Happy New Year to all of you! 2012 promises to be an exciting year for bridge.

With this year's upcoming tournaments posted at ACBL's website, we hope that new players are lacing up their boxing gloves and putting on their protective helmet (cue *Rocky* music) in anticipation of a new tournament season. Ok, the boxing metaphor is over the top. Far from any pugilistic encounters, tournament participation is not only challenging, it is fun. You'll compete against other new players who will soon become familiar faces. The Directors are knowledgeable, professional and friendly. If you have never played in a tournament yet, we strongly encourage you to do so. Ask your teacher or local club for guidance. If you wish to blog your tournament experiences, you are welcome to do so at our website – www.bridgepermanbasin.com.

Cont. on page 15 **Newcomers**

Lone Star Regional Buy One Get One Free Program for New Players

The 2012 Lone Star Regional has introduced a new program to introduce players to tournament competition. District 16 members with less than 50 masterpoints who have never played in an ACBL Regional Tournament may be nominated by their teachers or clubs for a buy 1 get 1 free voucher.

Bob Dowlen, ACBL Unit 174 President, says "I'm excited about this program. We'll offer a game for players with 0-5 masterpoints at 10:00 am and 2:30 pm Tuesday through Saturday of the tournament. These events will allow our newest players to participate in the fun and excitement of the tournament, compete against players at their skill level, and take advantage of the opportunities to learn at our daily speaker program. I'm looking forward to meeting our new players and welcoming them to the tournament."

Paul Cuneo, District Education Chairman and tournament co-chair, states "This program uniquely helps the District's teachers and clubs by offering them an incentive of \$2 for every session their nominees pay and play during this tournament and \$1 for each paid session in future Lone Star Regional tournaments until the player accumulates more than 50 masterpoints. It's a win/win way to introduce new players to tournament competition and help our teachers and clubs that close during the tournament."

Dan Morse, District 16 Director, brought the program to the Unit 174 Board as it was created and implemented in District 9 at the Naples, Florida Regional. Jay Whipple III of the Boca Grande Bridge Club created the web based software for the program and offered it to the Lone Star Regional. The program was a huge success at the Naples tournament and we're confident that it will benefit the Lone Star Regional. "Thank You Jay" for your idea and his willingness to help the Lone Star Regional!!!

Dan Morse
**District 16
Representative**


Seattle was a good location for an NABC despite it being cold and rainy. The convention center had plenty of room and good lighting and there were numerous restaurants of all price ranges within walking distance. My one regret is that I never saw Mount Rainer because of the fog and overcast weather conditions. I did tour the Boeing plant and it was eye opening. I recommend everyone who is in the area to go there. There were about 11,500 tables in play, which was good but not great. The local committee did a wonderful job.

This was Robert Hartman's first meeting as CEO of the ACBL. Robert impressed everyone with his knowledge, hard work and leadership qualities. I am optimistic about the future of the ACBL. Our membership was static in 2011, after a good increase in 2010. Robert is planning to work hard on marketing and increasing our membership in 2012.

HONORARY MEMBER OF THE YEAR Our own Greg Johnson was appointed the 2012 honorary member of the year. Greg is an astronaut living in Clear Lake, who has volunteered his time to talk at the ACBL Youth Tournaments, carried the Ace of Spades into space, and is a great friend of bridge. **CONGRATULATIONS GREG** from all of us.

We are budgeting a small loss for 2012. Starting in April there will be a slight increase in Tournament Director fees. National Associate National Director from \$174.10 to \$181.00 Tournament Director from \$159.10 to \$165.50 Associate Tournament Director from \$129.80 to \$135.00 Local Tournament Director from \$103.70 to \$108.00

Effective 1-1-2012, a teacher must be an ACBL member in good standing to receive the ACBL School Bridge Program Teacher payment.

The Alert Chart has been amended effective 1-1-2012, to stipulate that for the purpose of defensive bidding, the 1 club opening on 4-4-3-2 will be considered a natural bid. However it still should be announced, "may be short".

The ACBL is considering the "Strength of Field Formula" for

regional and sectional pairs and Swiss Team games, like we have now for the Knock-Out teams. If anyone has strong opinions about this, please e-mail me or the ACBL because this topic is on the agenda for the March board meeting.

Nadine Wood, long time Bridge volunteer from Washington DC, who recently passed away, has been honored by having the President's Volunteer of the Year Award renamed the President's Nadine Wood Volunteer of the Year Award.

A player who has been expelled or suspended for a total of 120 days or more for ethics violations will be considered ineligible to be awarded the rank of Grand Life Master even if other requirements are satisfied.

The rule that club directors of STaCs, who are eligible to play, (one section of play only and fewer than 18 tables) is modified so that they will receive master points.

The restrictions on online master points being used for rank advancement have been removed. Effective 1-2-2012, a certain number of pigmented points will be required for achieving additional life master status for players who became life master status after 1989.

SILVER LIFE MASTER must have no fewer than a combination of 200 silver, red, gold, or platinum points.

GOLD LIFE MASTER must have no fewer than a combination of 500 silver, red, gold, or platinum points. **EMERALD LIFE MASTER** must have no fewer than a combination of 1500 silver, red, gold, or platinum points.

PLATINUM LIFE MASTER must have no fewer than a combination of 2000 silver, red, gold, or platinum points.

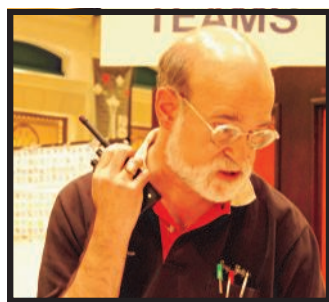
GRAND LIFE MASTER must have no fewer than 100 platinum points, no fewer than a combination of 2000 silver, red, gold, or platinum points.

Other requirements remain the same. These changes will not cause any player to lose the rank which he/she has previously obtained. In addition, each player who has obtained the rank of Life Master or higher as of 12-31-2011 will not have to fulfill the new 2012 rank advancement requirements to obtain the next highest rank.

Good cards to all,

Dan

Unit	Column	Announcements	Results	Pictures
172 San Antonio	4	4	4	4-5
174 Houston	5	Election 5	6	6-7
176 Dallas		7	7-8	8
183 Fort Western	9	9		
187 Corpus Christi	9	10	9-11	10-11
197 Lubbock	11	12		
201 Beaumont	12	12		
204 Fort Concho	12	13		
207 Texas Capital	12	13	13	
209 Permian Basin	13			
224 Abilene	13			
225 East Texas	14	14		
233 Central Texas	14	14		
237 Magic Valley	14	15	15	15
353 Wichita Falls	15			
Go Away Cruise		16		
SAN MIGUEL ALLENDE		3		



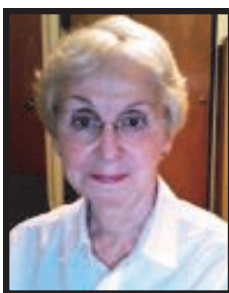
Gary Zeiger is New District 16 Field Supervisor

District 16 welcomes Gary Zeiger, the new Field Supervisor for D16 & 17. Gary replaces Tom Whitesides, who is retiring. Gary is married and has one child. He currently resides in Phoenix, AZ. He has a BS in Management from SUNY @ Binghamton.

Gary has been directing since November, 1990 and became a full time TD in 1996. He has played since 1969 and is a new Gold Life Master. He plans to direct in Texas at least once a year, preferably twice.

2011 National Goodwill Committee Appointments

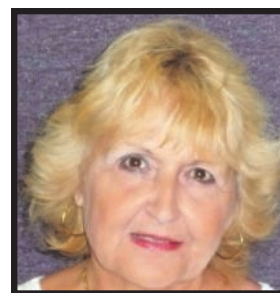
Congratulations to Janise Saul, Sally Blewett, Arlene Weingarten and Ira Hessel, who have been appointed to the National Goodwill Committee.



Arlene Weingarten



Sally Blewett



Janise Saul



Ira Hessel

DISTRICT 16 TOURNAMENTS

JANUARY

Austin	5-8
Houston U174 STaC	9-15
San Antonio (Nov Issue 5)	13-16
NAOP & NAP FINALS San Antonio (Nov Issue 5)	14-15
Richardson (Nov Issue 10)	19-22
Houston 0-100	20-22
Harlingen (Nov Issue 8)	20-22
HOUSTON REGIONAL (Nov Issue 16)	1/30-2/05

FEBRUARY

Ajjic	9-12
Austin 0-200	11-12
Grapevine (9)	10-12
San Angelo (13)	10-12
Rockport (10)	17-19
Beaumont (12)	23-26
Lubbock (12)	24-26
Temple (14)	24-26

MARCH

Longview (14)	1-3
McAllen (15)	2-4
SAN MIGUEL ALLENDE REGIONAL (3)	6-11
Austin (13)	8-11
Fort Worth NLM 500	10-11
Spring 0-300	9-11
Jalisco	23-25
Kerrville (4)	3/29-4/01
Richardson (7)	3/29-4/01

APRIL

Houston	13-15
San Antonio	12-15
Athens	19-21
Austin 0-NLM/500	21-22
Dallas 0-100	20-22
LUBBOCK REGIONAL	24-29
Dallas 0-NLM/500	27-29

May

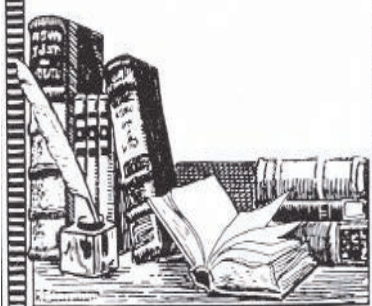
Austin	3-6
Fort Worth	4-6
Houston 0-300	3-6
Richardson	24-28
GNT Flights ABC Richardson	26-27

June

Midland	8-10
Stafford (Houston)	8-10
Richardson 0-NLM/500	8-10
San Antonio	7-10
Dallas 0-200	22-24

DEADLINE for March/April Issue

Announcements: February 1st
Articles, Columns: February 6th
Pictures & Copy must be digital.
E-mail to scorecard16@gmail.com



SCORECARD

ISSN 10560920 Published bimonthly on the first day of January, March, May, July, September and November by District 16 of the American Contract Bridge League, 2826 Barrel Oak San Antonio, TX 78231. Yearly subscription to members, \$ 3.00, paid with annual dues. Periodical Postage paid at Memphis, TN and at additional mailing offices.

All advertising and copy should be submitted to the editor by the **first** and **sixth** days of the month, respectively, preceding publication. Advertising rates available from the editor upon request. Pictures should be in digital format. For replies, include a self-addressed, stamped envelope.

Editors

Executive: Ira & Ellen Hessel
Managing: Ellen Hessel
GNT/NAOP Reporter: Ira Hessel
National Reporter: David Sokolow
Newcomer Reporter: Mercedes Barker

The Scorecard Committee

Donna Compton, Chair
Scott Humphrey
Annette McCarty

Moving? Subscribers:
Send address changes to:
ACBL Data Processing Dept.
6575 Windchase Blvd.
Horn Lake, MS 38637
Include ACBL number.

Send copy photos & announcements to: Email: scorecard16@gmail.com

Board of Governors
Dewitt Hudson



The Fall North American Bridge Tournament in Seattle, Washington, was a great success!! The NABC Tournament Co-Chairs were: Barbara Nist and Ole Godefroy. They and their committee planned for three years to make this NABC such an outstanding venue for our bridge players. The playing area was at the Washington State Convention Center which was a terrific playing site. This Center was very well located within walking distances of hotels and restaurants. The weather was typical of a western coastal state, cool and wet and very little sunshine. "This is a state where people do not get arthritis, but they do rot away!" TABLE COUNT total was 11,429 and was considered about average, considering the economic situation when you compare it with a more recent table counts for Fall Nationals in San Francisco which had over 15,000 tables and Orlando which had 12,677 tables.

MEMBERSHIP - Current membership total in the ACBL is: 165,332. New members continue to grow with a 'surging' number of: 9,894, during the first ten months of 2011.

REGIONALS/SECTIONALS - The table count for both Regionals/Sectionals, are down by 1% when compared to the previous year. Ten Cruise Sectionals were offered in 2011, in comparison, only 5 Cruise Sectionals were offered in 2010.

GRAND LIFE MASTER QUALIFICATION - A player who has been expelled or suspended for a total of 120 days or more for CDR Ethics Violations, as described in Appendix B of the ACBL CDR, will be considered ineligible to be awarded the rank of Grand Life Master, even if the other requirements are satisfied. The total days can be the result of one or multiple ethics infractions.

NABC SITE SELECTIONS -The ACBL Board of Directors approved the Kansas City Crown Center Complex (Westin and Sheraton hotels along with the Crown Center Exhibit Hall) as the hotels/playing site for the Spring, 2017 NABC. The 2017 Summer NABC was awarded to Toronto, Canada. The Toronto Convention Centre as the playing site and the Intercontinental Hotel Toronto and the Royal York

as the approved hotels for this tournament. The Fall NABC 2018 will be in Hawaii with the Hilton Hawaii Village as the host hotel playing site for this event. The Fall NABC 2020 will be in Tampa, Florida. The Tampa Convention Center will be the playing site. The host hotels will be: The Embassy Suites-Tampa, the Marriott Waterside and the Westin Harbor Island.

NEW ACBL PRESIDENT - Sharon Anderson was elected by the Board for 2012. She represents District 14, Minnesota. Her focus, she says, will be varied but will include helping to facilitate an effective management team at the ACBL, listening to members and honoring the thousands of ACBL volunteers, who she considers collectively to be "our largest asset."

TEACHER STIPEND - A teacher must be a current ACBL member in good standing in order to receive the ACBL School Bridge Program Teacher Stipend.

ACBL EDUCATIONAL FOUNDATION REPORT (2011 FALL NABC) -The ACBL Educational Foundation is a charitable trust fund established as a non-profit organization in 1987. Their purpose is to provide grants to promote the education of bridge, separate, from the day to day activities of the Education Department of the ACBL. The types of grants that are approved include bridge projects, educational material, programs and services that help the future of bridge. Innovative "first time" projects and those involving matching funds are especially encouraged.

The Foundation has approximately: \$750,000.00 dollars to fund grants. Some examples of grants include the King and Queen of Bridge, College Team Competition, Bridge Camps, Atlanta Junior Bridge and youth education. The Trustees would like to expand our grants to include senior educational programs and the development of teaching programs to teach the teachers.

The Foundation's sole source of funds comes from optional donations on the ACBL membership renewal forms, the Educational Foundation game held the first Thursday of every NABC, and from clubs and units that hold Educational Foundation special games. Individual donations are also a valuable source of funding for the Foundation.

Carolyn Peters Earns Platinum Life Master



Carolyn Peters of Grapeland became a Platinum life master when she went over 10,000 points last year. Carolyn, well known in District 16 from her bridge success, also does the D16 photo archive. Check out the "Faces of District 16" on the district website.

A Big Hand for The Little Lady.

Carolyn's favorite hand came against Eric Rodwell and Jeff Meckstroth. She held void AKQ10xx AKQ10x A. Leftie opened 2S and RHO advanced 4S. Carolyn gave her partner, Tom Peters, a choice between 7D or 7H. With 2H and 3D Tom chose 7D and when the Hs broke 4-1 with the short hand holding only 2D-that was the winner and Carolyn and her team won the match on that hand!

Tom Marsh Wins Tom Weeks Award



Congratulations to Tom Marsh, co-winner of this year's Tom Weeks Award, presented for exemplary professionalism by his peers in the Professional Tournament Directors Association..

Marsh grew up in western Massachusetts but settled in Texas after retiring from the U.S. Army after 22 years. His last post was Fort Sam Houston in San Antonio, where he taught radiation physics at the Academy of Health Sciences. He learned bridge at age 10, playing with his mother and brother, but didn't take the game seriously until the mid-Eighties while stationed with the Army in the Washington DC area. He was recruited to fill in at a game at Walter Reed

Hospital and later played his first duplicate game at a club in Crystal City VA. H achieved the rank of Gold Life master in December.

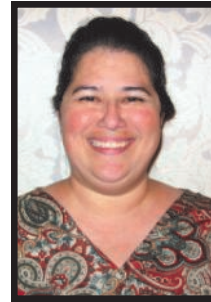
His recollection of how he got into tournament directing is fuzzy, but he remembers going to the annual regional in Houston to take a TD course, and soon was working sectionals and regionals all over Texas.

He worked his first NABC in San Francisco in 1996, for NABC Services. Marsh was promoted to associate national director in early 2011 and continues to run lots of tournaments.

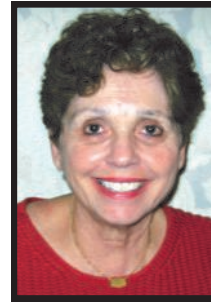
Terry Lavender, director of elections for the PTDA, says Marsh "is like the Energizer Bunny. He never stops. He is the kind of worker you love to be around."

At home in San Antonio, Marsh runs a club game once a week and teaches classes for intermediate players two other days.

New Life Masters



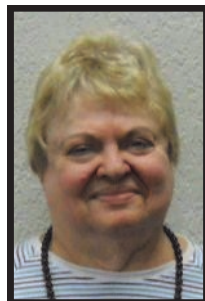
Lina Crumpler
Corpus Christi



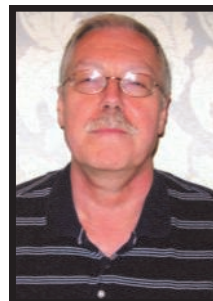
Jo Neesvig
San Antonio



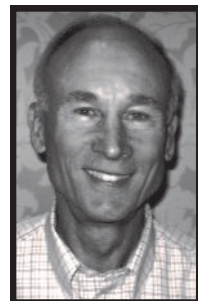
Janet Williams
Houston



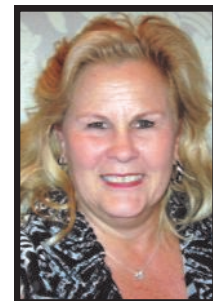
Joanna Overbaugh
Lake Jackson



Stephen Simpson
San Antonio



Michael McKown
Sugar Land



Janie Wolaver
Jefferson



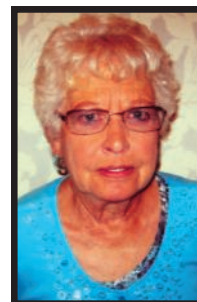
Martha Norman
Austin



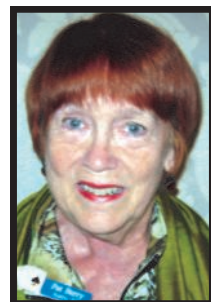
Ben Ball
Sugar Land



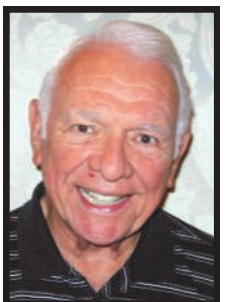
Toni Hurlbut
Mason



Jeane Crumpler
Conroe



Pat Berry
Austin



Clem Struve
Corpus Christi

Mexico Regional Tournament
6 - 11 March, 2012
Hotel Real de Minas, San Miguel de Allende, Guanajuato, Mexico

Tuesday, March 6				
10:00 am	OPEN PAIRS	1st. Session	BRACKETED K.O. TEAMS	1st. Session
10:00 am	199 ers.	1st. Session		
3:00 pm	OPEN PAIRS	2nd. Session	BRACKETED K.O. TEAMS	2nd. Session
3:00 pm	199 ers.	2nd. Session	SWISS TEAMS	1 Session
Wednesday, March 7				
10:00 am	OPEN PAIRS	1st. Session	BRACKETED K.O. TEAMS	1st. Session
10:00 am	199 ers.	1st. Session		
3:00 pm	OPEN PAIRS	2nd. Session	BRACKETED K.O. TEAMS	2nd. Session
3:00 pm	199 ers.	2nd. Session	SWISS TEAMS	1 Session
Thursday, March 8				
10:00 am	OPEN PAIRS	1st. Session	BRACKETED K.O. TEAMS	1st. Session
10:00 am	199 ers.	1st. Session		
3:00 pm	OPEN PAIRS	2nd. Session	BRACKETED K.O. TEAMS	2nd. Session
3:00 pm	199 ers.	2nd. Session	SWISS TEAMS	1 Session
Friday, March 9				
10:00 am	OPEN PAIRS	1st. Session	BRACKETED K.O. TEAMS	1st. Session
10:00 am	199 ers.	1st. Session		
3:00 pm	OPEN PAIRS	2nd. Session	BRACKETED K.O. TEAMS	2nd. Session
3:00 pm	199 ers.	2nd. Session	SWISS TEAMS	1 Session
8:00 pm	OPEN PAIRS	1 Session		
Saturday, March 10				
10:00 am	OPEN PAIRS	1st. Session	BRACKETED K.O. TEAMS	1st. Session
10:00 am	199 ers.	1st. Session		
3:00 pm	OPEN PAIRS	2nd. Session	BRACKETED K.O. TEAMS	2nd. Session
3:00 pm	199 ers.	2nd. Session	SWISS TEAMS	1 Session
8:00 pm	OPEN PAIRS	1 Session		
Sunday, March 11				
10:00 am	SWISS TEAMS			2 Session

6 matches. Complimentary Lunch between matches.

Note: ALL EVENTS ARE STRATIFIED
Stratification: A: +1500 pts B: 300-1499 pts C: 0-299 pts

INFORMATION AND RESERVATIONS 01 (800) 466 5800 • 011 52 (415) 1522 626
www.realdeminas.com acastillo@realdeminas.com

Reported in Jan/Feb Scorecards

40 years ago – 1972

"Big D" broke table count records (2788 tables) with the first Bridge Week in Dallas that was held at the Royal Coach Inn. Winners of the Sunday Swiss team were George Pisk, Barry Hagedorn, George Dawkins and Carolyn Flournoy.

30 years ago – 1982

George Pisk and Walter Jenkins won the Open Pairs at the San Antonio November sectional.

20 years ago - 1992

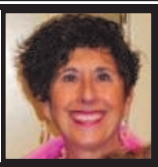
The Oak Hills tournament was well attended, chaired by Darlene Riely and directed by Spider Harris and Mildred Breed. George Pisk and George Dawkins won the Flight A Open.

10 years ago – 2002

Winners of the Friday Stratified Pairs at Bailey's Holiday Sectional were George Pisk and Ira Hessel.

**Unit 172
San Antonio**

Rebecca Brown



What a full year! Our bridge community is thriving and continuing to find reasons to celebrate. Our very own Tom Marsh was honored recently by his peers (does he really have any?); he was named this year's winner of the Tom Weeks Award, presented for exemplary professionalism by the Professional Tournament Directors Association. The award was announced in Seattle at the NABC while Tom no doubt was working his fanny off! What else is new?!

Another cause for a "hoorah!" is the naming of the winners of the Horton-Gray Awards, recognizing the female and male players who win the most masterpoints in Unit sectionals. Congratulations to standout players and all-around-nice people: Donna Swarthout (127.27) and Bill Walker (134.06).

At the Fall Sectional hosted by BCSA, we all had fun and lots to eat! But for many of us the show-stopper was seeing Bill Scarpero (everyone's favorite nonagenarian) play on the same team as 8 year old Zach Garrett. Bill conceded that Zach was probably the strongest member of the team! Another big moment at the Sectional was when it was announced that Nell Morgan had achieved Diamond Life Master status. What a gal—though she still wasn't in lederhosen!

Speaking of lederhosen, that reminds me: When I wrote about the New Braunfels Sectional last month, I failed to give credit where credit was due. Jan Wingate handled the lion's share of the hospitality effort, doing a marvelous job! Thanks a million, Jan! Can you top it next year? What a challenge!

Another oops! I was so busy thinking about the Swiss team luncheon from New Braunfels, I forgot to mention that Ira Hessel brought home more than 100 points in a wheelbarrow all the way from the Dallas Labor Day Regional. Really racking them up, Ira! Congrats!

Jeri Tribo, indefatigable head of the mentor/mentee program, co-hosted (with Fran Vanecko) the Mentor-Mentee tournament on November 19th at BCSA. Tremendous turnout and enthusiastic participation was evidenced by the 15 1/2 tables in play. More than that, though, a real spirit

of good will and good sportsmanship abounded. Congrats to Tom Trudeau/Victor Press (1st in A and B) and Tessa Bodnar/Sue Perkins (1st in C).

Board elections: The three vacant positions were filled by Ed Rawlinson (returning), Ira Hessel and Gary Anziani. New officers are: Roxana Tom, President; Rebecca Brown, Vice President; Roxie Tom, Treasurer, Fran Vanecko, Secretary. In 2012, Board meetings will be held at 5 p.m. on the second Monday of each month at Turtle Creek Bridge Club. Feel free to come to the meetings. This is your Unit!

New milestones: Life Master: Steve Simpson, Pamela Bickerton and Jo Neesvig (who became a Bronze Life Master at the same moment!); Bronze Life Master: Tessa Bodnar, Carolyn Martin and Rebecca Brown; Silver Life Master: Jeri Tribo, Kay Laird, Fran Vanecko, Jo Ann McGaffic, Paula Wissman, and Mary Ellen Cooper. Gold Life Masters: Sam Williams, Matt Meckstroth. Congrats to all!

Our troops still need our "care packages," especially baked goods, packaged goodies (like Twinkies), tabasco sauce, barbecue sauce, peanut butter, crackers, gum, pillow cases, and, of course, a word of encouragement and support. Fran Vanecko will collect donated goods from the clubs and handle the mailing to Afghanistan. Please tell her if you know of a soldier serving overseas who would appreciate being sent some items by our Unit.

Table tid-bit: You have seen him at the table, always charming and friendly! S. K. Sharma has played a lot of bridge, beginning as a boy in his native India, playing with his family at home. He and his family moved to the US in 1965, visiting San Antonio from NY in 1968 because his father had the India exhibit at Hemisphere. S.K. spent his career in the food and beverage industry, including as manager at the Hilton. He retired seven years ago and plays bridge as often as he can.

Upcoming Events: District 16 NAP finals/ SA Winter Fun Sectional (Jan. 13-16 at the Omni); Grand National Teams Unit 172 Finals (Flights B and C) (Jan. 28, Turtle Creek); I-35 Cup Qualifying (Feb 25, BCSA)

SEE YOU AT THE TABLE!

Bridge Club of San Antonio Fall Sectional

November 10-13
2011 200 players 221 tables.

1 31.42 Ed Rawlinson,
2 28.17 Donna Swarthout,
3 25.53 Dave Swarthout,
4 23.33 Gary Anziani,
5 20.47 Patricia Lozano,
6 20.47 Greg Hinze,
7 16.75 Jon Richard Ware,
8 16.75 James La Fountain,
9 16.69 Bill Walker,
10 14.46 Terry Riely,
11 14.46 Carolyn Riely,

Thursday Morning Open Prs-23.5
Tables / Based on 28 Tables A1.
Greg Hinze-Patricia Lozano A2.
Charles Jefferson-Beverly Santos BC1. Ginny Littrell, Boerne ; Jacquelyn Fisher B2. Everette Lewis-Bernadine Abend C2. Kathy Sinkin-Amor-Bob Steidel
Thurs AM 299r Pairs-4.0 Tables AB1. Judy Bagley-Sanae Zaveloff C1. Jan Wingate-June Reimer
Thursday Afternoon Swiss-22 Tables / Based on 25 Tables A1. Daniel Blaettler-Marilyn Arnold-Derrell Childs-Bill Walker A2. Donna Swarthout-Dave Swarthout-Gary Anziani-Ed Rawlinson, Helotes B1. Pat Russell-Linda Lawrence-Gary Larson-Jeri Tribo B2. Becky Mosely-Tessa Bodnar-Jodie McMahon-Beth Gale C1/2 Anita Albert-Sanae Zaveloff-Mary Jean O'Connor-Judy Bagley C1/2 Carol Ellis-Rena Lunke -Marjorie Miller-Andrea Williams
Thurs Aft 299r Pairs-3.0 Tables ABC1. Jan Wingate-June Reimer, New Braunfels ABC2. Beverly Poth-Barbara Boren

Friday Afternoon Open Prs-13.0
Tables / Based on 17 Tables AB1. Alexander Labry-Malou Flato A2. LaNelle Strickland, -Jean Blilie B2. Linda Lawrence-Paula Warren C1. Marjorie Miller-Stephen Simpson C2. Debbie Schweiss-Evelyn Berns
Friday Morning Open Pairs-24.5
Tables / Based on 33 Tables A1. Doug Cross-Ed Rawlinson A2. Patricia Lozano-Greg Hinze B1. Alexander Labry-Malou Flato B2C1. Leslie Tramer-Tessa Bodnar C2. Kathy Sinkin-Amor-John Hilbig
Fri AM 299r Pairs-8.0 Tables AB1. Richard Greenbauer-Polly McCamey B2C1. Jan Wingate-June Reimer C2. June Eubank-Carol Muir

Saturday Morning Open Prs-24.0
Tables AB1. Patty Moncus-Mary Cooper A2. Phillip Grothus-Donna McBride B2. Alonzo Britton-Mary Britton C1. Jim Gorman-Rowena Gorman C2. Kathy Sinkin-Amor-John Hilbig
Fri Aft 299r Pairs-4.0 Tables AB1. Earl Cutler-Betty Cutler AB2. Judy Bagley-Sanae Zaveloff
Fri/Sat KO-Bracket 1-4 Tables 1. Gary Anziani-Dave Swarthout-

Kerrville Springtime In The Hills Sectional

March 29 April 1, 2011

Inn of the Hills

1001 Junction Hwy1-800-292-5690

Bridge Rate \$92 Cutoff date 2/28/12



Thursday, March 29

Stratified Pairs 10 am
Stratified Swiss Teams 3:00 pm

Friday, March 30

Stratified Pairs 10 am & 3:00 pm
Wildflower Knockout Teams (sessions 1,2, & 3)
10 am, 3:00 pm & 7:30 pm
Fast Pairs (24 boards, finished approx. 10pm) 7:30 pm

Saturday, March 31

Stratified Pairs 10 am & 3:00 pm
Mesquite Knockout Teams (sessions 1,2, & 3)
10 am, 3:00 pm & 7:30 pm
Fast Pairs (24 boards, finished approx. 10pm) 7:30 pm

Sunday, April 1

Margaret Higgins Stratified Swiss Teams
10 am & TBA

Tournament Chair: David Ewing 830-285-4718

Partnership: Richard Hamm 830-895-2085

Director in Charge: Tom Marsh

299er Pairs will be held with a 3-table minimum
Card fees: \$11/person/session, \$120/team Sunday Swiss
(includes lunch) \$8/player for teams more than 4 players
Stratifications: A: 2000+; B: 500-2000; C: 0-500.
All events will be based on average masterpoints

Donna Swarthout-Ed Rawlinson 2.
Terry Riely-Carolyn Riely-James La Fountain-Jon Richard Ware
Fri/Sat KO-Bracket 2-6 Tables 1. Charles Loeffler-Alberta Birk-Toni Hurlbut-Linda Reichenau 2. Zach Garrison-Kristy Garrison-Karen Fillis-George Fillis
Saturday Aft Open Pairs-19.5 Tables A1. Greg Hinze-Patricia Lozano A2. Nell Morgan-Carol Campbell B1. Daniel Blaettler-Thomas Trudeau B2. Horatio Aldredge-Jacquelyn Aldredge C1. Stephen

Hoffman-Judith Hoffman C2. Leslie Tramer-Tessa Bodnar
Sunday Stratified Swiss-27 Tables A1. Ed Rawlinson-Donna Swarthout-Gary Anziani-Dave Swarthout A2. James La Fountain-Jon Richard Ware-Bill Riley-Nancy Riley BC1. John Hilbig-Bernadine Abend-Dolores Reiley-Carol Zulich, B2. Tessa Bodnar-Abraham Ribak-Myra Ribak-C David Mitchell C2. Stephen Hoffman-Judith Hoffman-Bob Steidel-Kathy Sinkin-Amor

BRIDGE CLUB OF SAN ANTONIO SECTIONAL WINNERS



Thursday Morning Pairs (A)
Saturday Afternoon Pairs (A)
Patty & Greg Hinze



Thursday Swiss (A)
Marilyn Arnold, Bill Walker,
Dan Blaettler, Derrell Childs



Thursday Swiss (B)
Pat Russell, Jeri Tribo,
Gary Larson, Linda Lawrence



Thursday Swiss C
MJ O'Connor, Sanae Zaveloff,
Judy Bagley, Anita Albert



Thursday Swiss C
Carol Ellis, Marge Miller,
Rena Lunke, Andi Williams



Friday Morning Open Pairs A
Doug Cross, Ed Rawlinson



Friday Morning Open Pairs B
Friday Afternoon Open Pairs A & B
Alex Labry, Malou Flato



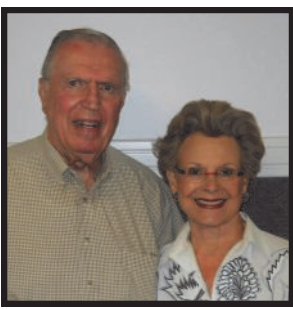
Friday Morning Open Pairs C
Tessa Bodnar, Leslie Tramer



Friday Afternoon Open Pairs C
Marge Miller, Steve Simpson



Saturday Morning Pairs (A/B)
Patty Moncus, Mary Cooper



Saturday Morning Pairs C
Jim & Tena Gorman



Saturday Aft Pairs B
Tom Trudeau, Dan Blaettler



Saturday Aft Pairs C
Judy & Steve Hoffman



KO Bkt 1, Sun Swiss A
Donna Swarouth, Ed Rawlinson,
Gary Anziani, Dave Swarouth



KO Bkt 2
Linda Reichenau, Toni Hurlbut,
Alberta Birk, Charles Loeffler



Sun Swiss B & C
Bernadine Abend, Delores Reiley,
Carol Zuechlich, John Hilbig



Thursday Morning 299er
Judy Bagley, Sanae Zaveloff



Thursday Afternoon 299er
June Reimer, Jan Wingate



Friday Afternoon 299er
Betty & Earl Cutler



Friday Morning 299er
Dick Greenbauer, Polly McCamey

Houston Unit 174 to Hold Board Election April 13-15, 2012

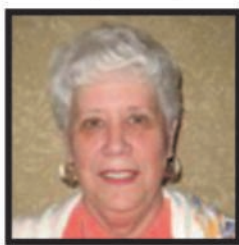
The members of Unit 174, whose participating clubs include Baytown, Bryan/College Station, Clear Lake, Conroe, Galveston, Houston, Kingwood, Lake Jackson, Livingston, Pasadena, Spring, Stafford, and Sugar Land, will have an opportunity to vote for three members of the Board of Directors April 13-15, 2012, during the Election Sectional at the Marriott Westchase. The three newly elected members will join Beverley Cheatham, Paul Cuneo, Chuck Ensor, Joyce Gore, Jolie Hess, and Errol Le Cesne to complete the full nine-member board. This year's Nominating Committee consisting of Lauri Laufman (chairman), Debra Bellan, Carmen Keys, Judy Ensor, Bert Onstott, and Sue Williams urges all Unit 174 members to vote, either in person, early online, or by absentee ballot. To vote in person, you should plan to be at the tournament site during the hour before each session on Friday and Saturday or one hour before the Sunday morning session. To vote early on-line, go to www.acblunit174.org, place your mouse over 'MyUnit174' on the right side of the menu bar, click on "BOD Election", and follow instructions. To vote absentee, follow the procedure outlined below. Winners will be announced prior to the second session on Sunday, April 15. In order for your vote to be counted, you must vote for exactly three candidates. The candidates have been given an opportunity to introduce themselves and say a few words about their philosophies, goals and backgrounds. They are listed alphabetically and have been restricted to 100 words.

John Byrnes



Howdy! My name is John Byrnes and I started playing duplicate bridge before there was anything called transfer or weak two bids. So that's been awhile. Truthfully, I'm a pretty good flight 'B' player forced to play in flight 'A', with a little over 3,000 master points. I'm a graduate of Texas A&M, class of '66 and worked many years as an estimator/sales rep. I'm willing to 'GIVE BACK' to a game that has been a great source of enjoyment for me. I (gulp!!) volunteer, and will work hard for you and this stupid, aggravating, addictive, frustrating, GAME?

Kathy Hughes



I am seeking reelection to the Board of the Houston Unit 174. In my past three years serving as the I/N Coordinator, I feel that I have been a great benefit to the Unit by increasing participation at the club level as well as increasing membership of the ACBL overall. I have really enjoyed serving in this position and feel that the reputation that I have established will provide a continuum to promote the success of the Unit. Through the program, I feel that novices gain self-confidence by learning the mechanics of playing duplicate bridge in all settings, especially tournament settings.

Bette Magee



I was born and raised in Dallas, attended Marymount College and graduated with a Bachelor of Science degree from the University of Texas. Moving to Houston in the 60's I worked for Humble Research and Brown and Root, and later in sales for travel agencies. I was active in the Houston Ladies Tennis Association as a league coordinator and board member. I am an active member of St. Michael Catholic Church and am a volunteer with the HGO opera guild. I recently made Life Master and would enjoy promoting novice play in a friendly and helpful atmosphere.

Tom Martinsen



I would like to support and help Unit 174 as one of your board members. After graduating from college, I served four years as a US Navy Arabic Linguist. I began my career as an exploration geophysicist in New Orleans and met my wife, Linda, there. We have two grown daughters and moved to Houston in 1997. After we retired, we were reintroduced to duplicate. Now, 2½ years later, we are nearly "Life Masters", enjoying the game and the bridge community. I also enjoy travel, walking in Memorial Park and managing our investments in stocks and oil and gas ventures.

Bill Riley



I started playing bridge in medical school in 1969. I played very little initially as kids and work took precedent. Currently I am working part time as a professor and pediatric endocrinologist caring for children with diabetes at UTMB. I made Gold Life Master in 2011 with my new partner in life and bridge, Nancy. We thoroughly enjoy the game. I served on boards in Corpus Christi and Gainesville, Florida as vice president and chair of local disciplinary and appeals committee. I hope to promote the game to the enjoyment of everyone. I really enjoy the kids.

Nancy Strohmer



I played in my first duplicate bridge game in 2003 on a cruise. My husband Hans and I have been playing ever since as partners. I have a B.S. and M.S. in Education (Business) from James Madison University in Virginia. I co-founded a manufacturing company in 1981 and sold it in 2001 and I've been retired ever since. My 12- and 14-year old grandchildren attended a bridge camp this past June and played in the Humble Tournament—you may have seen them there. If elected, I will work hard to promote bridge, particularly those areas involving our youth.

Absentee Voting Procedure

Any member may vote by Absentee Ballot. To vote absentee, a member must contact the Election Judges by U.S. mail, e-mail, or telephone requesting an Official Ballot. If the Voter is a member in good standing an Official Ballot will be sent to the Voter at the voter's address of record, in a small unsealed envelope. Upon receiving the Official Ballot, the Voter should complete the ballot, seal it inside the small envelope provided, and place the small sealed envelope inside another envelope addressed to the Election Judges. The back flap of the outside envelope must be signed by the Voter. If no signature is provided, the ballot will not be counted. The Absentee Ballot must be postmarked no later than March 30, and must be received by the Election Judges no later than April 11 in order to be counted. The Election Judges are Owen and Pat Bunn: 15238 Springhill Bend Ln, Cypress, TX; 77429-1575; 281-357-0591, owenbunn@comcast.net or patbunn@comcast.net.

Unit 174 Houston

Mary Jane Kinnebrew



Upcoming Special Games and Tournaments

January 9-16 – Unit STAC
January 20-22 – Bridge Studio 99er Sectional
January 30-February 5 – Unit 174 Lone Star Regional
http://www.acblunit174.org/Flyers/2012_LSR_online.pdf
March 9-11 – Bridge Club of Houston 299er Sectional

Our Regional

Hooray! Our wonderful Lone Star

Regional starts on January 30th. I counted 20 different ways to get those elusive gold points. Of course, the red ones aren't to be sneezed at either, and they can be won in every event. For information about naming an event, please contact Joyce Gore at joygore@sbcglobal.net or 281-437-7467 or contact Bob Dowlen at bobdowlen@gmail.com or 281-352-9545. New this year will be a snack bar in the playing area. Here's the flyer: http://www.acblunit174.org/Flyers/2012_LSR_online.pdf.

Mike Lawrence. The world-renowned bridge player, author, and teacher is coming to Houston. On February 24-25, Mike will offer 3 special classes at the Houston Mar-

riott Westchase, and he will also be available for private lessons. Here's a link to the flyer: <http://www.acblunit174.org/Flyers/Mike%20Lawrence.pdf>

Movin' on Up! Congratulations to these Unit 174 members who have reached new bridge milestones:

Life Masters: Ben Ball, Bonnie Boyd, Donald Boyd, Brett Elliott, Jeffrey Kroll, Jeanne Krumpler, William Kibikas, Mike McKown, Susan McLaurin, Jo Ann Pierce, Janet Williams, Gary Winston, Shari Winston
Bronze Life Masters: Susan Belding, Judy Brown, Pat Bunn, Jean Crumpler, Myrna Dorman, Clairlee Hirsch, Patsy Howell, Bill Kiehnhoff, Jeffrey Kroll, Carolyn Lanier, Kathy Tuggle

Silver Life Master: Debi Balter, Darlene Gilmore, Sue L Kimbrell, Carolyn Labouliere, Peggy Naughton, Nancy Reader, David Wicks

Gold Life Master: Philip Duterme, Liz Ghrist, Bruce Wick

Diamond Life Masters: Larry La Breque, Paul Nimmons

Emerald Life Master: Stephen Schwall

Platinum Life Master: Carolyn Peters

Fall Bridge Extravaganza a Big Hit! Eddie Wold and Bob Morris's third annual Wold World seminar featured Larry Cohen as guest speaker. Thanks to the kindness and generosity of Carolyn Lanier, 150+ participants from New Mexico, South Carolina, and Louisiana joined

local players to enjoy lectures, bidding competitions, and games at the beautiful Lanier estate.

Peerless in Seattle: These Unit 174 members placed first in their brackets in events at the recent national tournament:

KOs: David Ticen team, Leslie Hajo team, Bonnie and Donald Boyd team

Swiss Events: Dan Morse team, Katherine and Hugh Miller – Kay and Hugh Humphries – Bathsheba and Gabe Perry

Pairs Events: Madhusudan Patel,

Dan Morse will serve another 3-year term to as the District 16 representative to the ACBL Board of Directors. Thanks to Dan for all his good work.

Ever Seen a Minor Penalty Card? South bids 1C. West, off in another world, lays down the 4 of clubs, attempting to follow suit. "Director, please." Ruling: the 4 becomes a minor penalty card - to remain on the table till West's appropriate play is a small club.

Unit 174 NAP Qualifiers. Good luck to our 46 pairs who qualified for the regional round in San Antonio! These pairs topped their brackets:
A: Jolie Hess-Pat Levy
B: Ralph Herz-Bill Griffith
C: Jo Ann Pierce-William Kibikas

Away from the Table. Did you know that our unit's Kathleen Malcolmsen designs and makes secret-opening boxes and mechanical puzzles in her own workshop? She makes all the parts herself, using normal woodworking machinery and tools. And - each summer Kathleen travels to the invitation-only International Puzzle Party (IPP), held at different locations around the world. There she sells puzzles and meets puzzle collectors and fellow designers and makers.

Fall Sectional Overall Winners

Friday 2-Session Pairs: Vic Sowers/George Fox (A), Yvonne Serbin/Joyce Nantz (B/C)

Saturday 2-Session Pairs: Kay Johnson/Bob Morris (A), Theron Lindsey/Paula Hradecky (B), Jay / Karkowsky/Marilyn Leiman (C)

Knockout: Anthony Bianchi/Gary King/Joe Gittelman/Dianna Gittelman (1), Joe Everette/Patrick Horsley/Jeffrey Kroll/Joseph Volanski (2), William Kibikas/Peggy Naughton/Jo Ann Pierce/Bob Naughton (3)

Side Pairs: Marsha Bernstein/Shirley McKee (A), Doug Boswell/Larry Bluhm (B)

Sunday Swiss: Curtis Polk - Robert Munger - David Henke - Bill Baker (A/AX), Daniel Schomer - Ed Harper - Donald White - Clif Capen (B1), David Goldfarb - Harry Elliott - Donald Varvel - Eleanor Sherwyn (B2), John Heath - Frances Gross - Nile Gross - Nandlal Khatri (B3), Herbert Kalman - Robert Reichek - Karen Tabak - Daniel Leightman (B4),

Gordon Yee - Kitty Wong - Shou Chao - Kyle Lueders (B5), Martin Gastrell - Donald Snelling - Richard Crosby - Sandy Snelling (B6)

Teaching the Young Ones. Abbie and Errol LeCesne's Bridge students competed in a tournament at STEM Academy after finishing their 8-week course last fall. There were 8-1/2 tables in the tournament, and the winners received "Club Champion" trophies provided by ACBL. Johnny Gill began teaching a follow-up course November 7th.

Studio 299er Sectional Winners

Friday Morning Pairs

A: Kathleen Stuart/Joni Smith
B: Katherine McClure/Troy Carr
C: Linda Wukasch/Julia Thompson

Friday Afternoon Pairs

A/B/C: John Petersen/Mark Nemitz

Saturday Afternoon Pairs

A: Michele/Tim Halligan

B/C: Linda/Michael Windham

Saturday Evening Pairs

A/B: Zach Garrison/Mack Guderian

C: Katherine McClure/Troy Carr

Sunday Swiss Teams

A/B: Mary Watters - Anne Gorry - Suzie Wilson - Carol Winograd

C: Linda Wukasch - Julia Thompson

- Debbie Goldgar - Eugene Goldgar

Overheard at the Table: West, after barely making a 3-heart contract: "I want it on my tombstone: She always knew when to pass."

Cruisin' in Corpus: Event or Bracket Winners

KOs: Tom Peters/Carolyn Peters team -- Tom Martinsen/Linda Martinsen/Mark Leighton/Marsha Shortt -- Carolyn Lanier/Mary Pat Gentry/Eddie Wold/Bob Morris/Becky Ellisor/Mildon Ellisor -- Carolyne Fox/Gary King -- Nancy Starks/Joanna Overbaugh -- Tom Peters/Carolyn Peters -- Shawn Quinn/Joe Quinn/Carolyne Fox/Gary King -- Susan Spencer/Charles Lawson

Pairs: Ann Gibbs/Mary Jennings -- Zach and Kristy Garrison -- Zach and David Garrison -- Mark Leighton/Marsha Shortt, Linda Reasi/Julia Blancet

Side Series: Rick Elliott

Compact KO: Eddie Wold/Bob Morris/Becky Ellisor/Milton Ellisor -

- Pat Bunn/Owen Bunn/Carol Wilson/Ed Lilly

Sunday Swiss: Tom Peters/Carolyn Peters (A) -- Lily Andre/Ira Garrison/Philip Duterme (X) -- Linda Reasi/Julia Blancet/ Mark Leighton/Marsha Shortt (B).

Condolences. Our hearts go out to friends and families of these Unit 174 members who have recently passed away: Allen Craig, Dottie Ann Goodloe, Bill Klingman, Catherine Legg Lee, Bernice Mamroth, and Sally MacRae.

Houston Fall Sectional

Humble TX
October 21-23 2011
508 players 483 tables.

1 26.46 J Gittelman
2 26.46 Gary King
3 26.46 Dianna Gittelman
4 26.46 Anthony Bianchi
5 25.85 Ira Hessel
6 24.85 Debi Balter
7 22.85 Joe Quinn
8 22.68 David Henke
9 21.52 William Baker
10 19.94 Curtis Polk

Friday Aft Open Pairs-37.0 Tables / Based on 56 Tables AB1. Debi Balter -Jack Balter AB2. Gail Carter-Betsy Birkett C1. Robert Reichek-Herbert Kalman C2. Jeffery Parker-Robert Armstrong

Friday Aft 299er Pairs-13.0 Tables DEF1. John Petersen-Mark Nemitz D2. Cherry Schwarz-Penny McAdam EF2. Mary McDonald-Anita Rothfuss

Friday Aft 49er Pairs-6.0 Tables

G1. Lorita Tipton-Helen Oliver G2F1. Linda Windham-Michael Windham F2. Larry Jordan-Mike Hofmann

Friday Eve Open Pairs-24.0 Tables /

Based on 31 Tables A1. Vic Sowers-George Fox A2. Carolyne Fox-Georgiana Gates BC1. Robert Reichek-Herbert Kalman BC2. Yvonne Serbin-Joyce Nantz

Friday Eve 299er Pairs-9.0 Tables

DEF1. Bebe Walker-Darlyn Dusek DEF2. Lenna Landers-Ben Landers

Fri-Sat KO-Bracket 1-10 Tables 1.

Anthony Bianchi-J Gittelman-Gary King-Dianna Gittelman 2. Kenneth McAllister-Phyllis Kuchta-Julia Blancet-Vern Schmidt

Fri-Sat KO-Bracket 2-9 Tables 1. Joe Everette-Patrick Horsley-Jeffrey Kroll-Joseph Volanski 2. Phil Bellan-Elizabeth Vondy-Daksha Adhia-Daniel Leightman

Fri-Sat KO-Bracket 3-9 Tables 1.

William Kibikas-Jo Ann Pierce-Peggy Naughton-Bob Naughton 2. Willie Jo Schaefer-Nan Fulweber-Raymond Prizler-William Beushaw

Friday Eve Swiss Teams-15 Tables

A1. John Erickson-Gil Micheletti MD-John Zilic-Thomas Peters A2. Jonathan Holmes-Janice Henderson-Jane Armstrong-Betty Starzec BC1. Myrna Dorman-Diane Konick-Claudia Parr B2. James Clipson Jr-Jane Clipson-Carmen Keys-Paul Cuneo C2. Owen Bunn-Patricia Bunn-Nancy Caldwell-Joseph Cunningham

Sat Bracketed Swiss-#1-9 Tables /

Based on 38 Tables 1. Sally Wheeler-Buddy Hanby-Ellen Hessel-Ira Hessel-Joe Quinn 2. John Erickson-Gil Micheletti MD-John Zilic-Thomas Peters

Sat Bracketed Swiss-#2-9 Tables /

Based on 29 Tables 1. Lisa Sommer-Charles Sommer-Lily Andre-James Andre 2. Stephen Reichek-Ariel Leibovitz-Debi Balter-Max Levit

Sat Bracketed Swiss-#3-9 Tables /

Based on 13 Tables 1/2 Susan McMahan-Susan Skiles-Sue Kimbrell-Julie Brand 1/2 Charles Lanni-Robert Watkins-Terry Brown-Belinda Brown

Sat Bracketed Swiss-#4-11 Tables

1. Laura Jones-Kim O'Hara-Diane Willrodt-Carolyn Campbell 2. Thomas Wulfers-Sylvia Thomas-Robert Foote-Jean Rachner

Sunday A/X Swiss Teams-21 Tables /

Based on 68 Tables AX1. Curtis Polk-Robert Munger-David Henke-William Baker A2. Shawn Quinn-Joe Quinn-Ira Hessel-Ellen Hessel X2. Joan Sittton-Victor Sittton-Debi Balter-Jack Balter

Sunday Morn Open Pairs-6.0 Tables

A1. Pam LaShelle-Puddin Barnes A2/3 Carl Hogan-Anna Alix A2/3B1. Puddin' Krueger-Marilyn Leiman B2C1. Helen Hollis-Gaylene Jewell C2. Diane Kaminsky-Barbara Frankel

Sunday Aft Open Pairs-3.0 Tables

A1. Raj Pruthi-Robert Cohen 2. Marc Beardsley-Joe Mosele

Saturday Morn Side Pairs-4.0 Ta-

bles A1. Marsha Bernstein-Shirley McKee B1. Doug Boswell-Larry Bluhm

Saturday Morn 299er Pairs-12.0

Tables DEF1. W Courtney Coffman-David Morris DEF2. Lynne Andress-Jenelle Rae McGinnis

Saturday Morn 49er Pairs-8.0 Ta-

bles GH1/2 Carol Montague-Lynn Gamblin GH1/2 Sylvia McCreary-Esther Spring II. Elizabeth Grubb-Shirley Kingsley I2. Frances Shotwell-Millie Perner

Saturday Open Pairs-24.0 Tables /

Based on 48 Tables A1. Robert Morris-Kay Johnson A2. Virginia Zilic-Carolyn Lanier B1. Chuck Gillis-Aleksandr Adelman B2. Theron Lindsey-Paula Hradecky C1. Jay Karkowsky-Marilyn Leiman C2.

Saturday Aft 299er Pairs-12.0 Ta-

bles ABC1/2 D Jill Spence-Jayne Gross ABC1/2 Debbie Goldgar-Eugene Goldgar

Saturday Aft 49er Pairs-6. Tables

G1. John Petersen-Mark Nemitz H11. Jeanne Fergus-Arthur Kainer

Saturday Aft Side Pairs-4.0 Tables

AB1. Charles Ensor-Birendra BK Singh

Sun Bracketed Swiss-#1-7 Tables /

Based on 34 1 Daniel Schomer-Ed Harper-Donald White-Clif Capen 2. Phyllis Timko-Donald Timko-V Abercrombie-Audley Karrasch

Sun Bracketed Swiss-#2-7 Tables /

Based on 18 Tables 1. David Goldfarb-Harry Elliott -Donald Varvel-Eleanor Sherwyn 2. Lucy Hofmann-Barbara Pope-Bonnie Terrell-Donna Mann

Sun Bracketed Swiss-#3-7 Tables /

Based on 16 Tables 1. John Heath-Frances Gross-Nile Gross-Nandlal Khatri 2. Jim Harp-Margaret Raymond-Richard Polunsky-Brett Elliott

Sun Bracketed Swiss-#4-7 Tables /

1. Herbert Kalman-Robert Reichek-Karen Tabak-Daniel Leightman 2. Thomas Martinsen-Linda Martinsen-Paul Cuneo-Carmen Keys

Sun Bracketed Swiss-#5-7 Tables /

1. Gordon Yee-Wong-Shou Chao-Kyle Lueders 2. William Kibikas-Jo Ann Pierce-Peggy & Bob Naughton

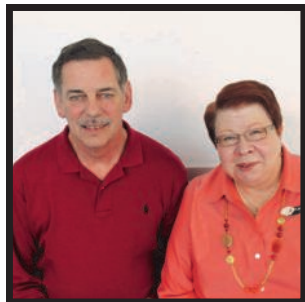
Sun Bracketed Swiss-#6-12 Tables

1. Martin Gastrell-Richard Crosby-Donald Snelling-Sandy Snelling 2. Virginia Mayhew-Darlyn Dusek-Sharon Kirkland-Bebe Walker

HOUSTON FALL FESTIVAL SECTIONAL



Fri Eve Swiss B & C
Myrna Dorman - Diane Konick
Marilyn Hughes - Claudia Parr



Fri Aft 49ers
Michael & Linda Windham



Fri Aft Open C
Robert Reichek - Herbert Kalman



Fri Aft 49ers
Helen Oliver & Lorita Tipton



Fri Aft Open A & B
Debi & Jack Balter



Fri Eve 299ers
Bebe Walker & Darlyn Dusek



Fri Eve Open Pairs A
George Fox & Vic Sowers



Fri Eve Swiss A
John Zilic - John Erickson
Gil Micheletti - Tom Peters



Sat Morn 49ers
Carol Montague & Lynn Gamblin



Sat Morn 49ers
Shirley Kingsley - Elizabeth Grubb



Sat Morn Side Game A
Marsha Bernstein - Shirley McKee



Sat Morn 49ers
Esther Spring - Sylvia McCreary



Fri - Sat KO Bkt 1
Dianna Gittelman - Anthony Bianchi
Gary King - Joe Gittelman



Fri - Sat KO Bkt 2
Jeffrey Kroll - Joe Volanski
Pat Horsley - Joe Everette



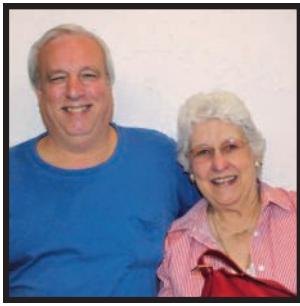
Fri - Sat KO Bkt 3
Peggy Naughton - Jo Ann Pierce
Bob Naughton - Bill Kibikas



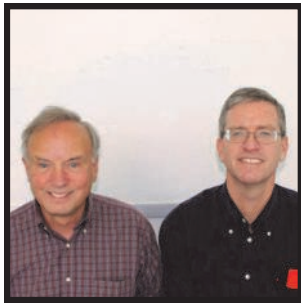
Sat Swiss Bkt 1
Ellen & Ira Hessel
Joe Quinn, Sally Wheeler, Buddy Hanby



Sat Swiss Bkt 2
Lisa Sommer - Lily Andre
Charles Sommer - Jim Andre



Sat Aft 49ers
Art Kainer - Jeanne Ferguson



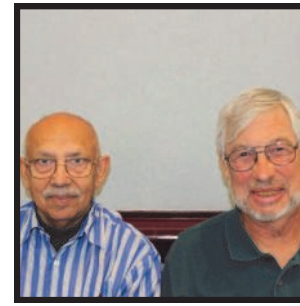
Sat Morn 299ers
David Morris - Courtney Coffman



Sat Aft 299ers
Eugene - Debbie Goldgar



Sat Aft 299ers
Jill Spence - Jayne Gross



Sat Aft Side Game A & B
BK Singh - Chuck Ensor



Fri Aft 299ers, Sat Aft 49ers
Mark Nemitz - John Petersen



Sat Open Pairs A
Bob Morris - Kay Johnson



Sun Swiss Flt A & AX
Curtis Polk - Bob Munger
David Henke - Bill Baker



Sun BCD Swiss Bkt 4
Herb Kalman - Robert Reichek
Karen Tabak - Dan Leightman



Sun BCD Swiss Bkt 5
Kitty Wong - Shou Chao
Kyle Lueders - Gordon Yee



Sun BCD Swiss Bkt 6
Dick Crosby - Sandy Snelling
Martin Gastrell - Don Snelling



Sat Morn Open Pairs B
Puddin Krueger - Marilyn Leiman

GNT Championship Flight Finals Moved to March 31 – April 1, 2012

District 16's championship flight GNT finals have been moved to the Richardson, TX sectional on March 31 – April 1, 2012 at the Richardson Civic Center. Any flight "A" teams that would like to participate in the Championship finals may do so without jeopardizing their chances in the Flight A finals in May.

Team Events Every Session!
Food, Drink & Fun for Everyone
Warren Buffet Cup on Display

Big Time in Big "D" Sectional

"City of World Champions"
March 29-April 1, 2012

World Class Speaker Program
12:45pm & 6:00pm Thursday-Saturday
Gifts & Trophies for 299er Players

Thursday 9:30am Bracketed KO (session 1 of 3)
49er Silver Pairs (0-5 Play Free)
299er Silver Pairs
Open Silver Pairs

Light lunch provided for morn/aft participants

Thursday 1:30pm Bracketed KO (session 2 of 3)
Compact Bracketed KO (session 1 of 2)
49er Silver Pairs (0-5 Play Free)
299er Silver Pairs
Open Silver Pairs

Light dinner provided for aft/evening participants

Thursday 6:30pm Bracketed KO (finals)
Compact Bracketed KO (session 2 of 2)
49er Silver Pairs (0-5 Play Free)
299er Silver Pairs
Open Silver Pairs
Silver Swiss Teams (single session)

Friday 9:30am Bracketed KO (session 1 of 3)
49er Silver Pairs (0-5 Play Free)
299er Silver Pairs
Open Silver Pairs

Light lunch provided for morn/aft participants

Friday 1:30pm Bracketed KO (session 2 of 3)
Compact Bracketed KO (session 1 of 2)
49er Silver Pairs (0-5 Play Free)
299er Silver Pairs
Open Silver Pairs

Light dinner provided for aft/evening participants

Friday 6:30pm Bracketed KO (finals)
Compact Bracketed KO (session 2 of 2)
49er Silver Pairs (0-5 Play Free)
299er Silver Pairs
Open Silver Pairs
Silver Swiss Teams (single session)



**Warren Buffett
Challenge Match Trophy**

Tournament Site: Richardson Civic Center
411 West Arapaho Rd., Richardson, TX 75080
Southwest corner of Arapaho & Central (75)
Many great restaurants nearby!

Nearby Hotel: Courtyard By Marriott
1000 S. Sherman Street, Richardson, TX
800.321.2211 \$119 (Wed/Thurs)
Less on Weekend

Got Questions? Chris Compton
Tel. 972.333.9214
chris@bridgeacademyofnorthdallas.com

Join us for the 2011 Unit 176
Ace of Clubs & Mini McKinney
Awards Ceremony Saturday at 6:30pm

Saturday 9:30am Bracketed KO (session 1 of 3)
49er Silver Pairs
299er Silver Pairs
Open Silver Pairs

Light lunch provided for morn/aft participants

Saturday 1:30pm Bracketed KO (session 2 of 3)
Compact Bracketed KO (session 1 of 2)
49er Silver Pairs
299er Silver Pairs
Open Silver Pairs

Light dinner provided for aft/evening participants

Saturday 6:30pm Bracketed KO (finals)
Compact Bracketed KO (session 2 of 2)
49er Silver Pairs
299er Silver Pairs
Open Silver Pairs
Silver Swiss Teams (single session)

Sunday 10:30am & TBA Strati-Flighted Swiss Teams (play through)
A: 3000+; X: 0-3000 (Play together)
B: 1000-1500; C: 500-1000; D: 0-500

Light lunch provided for two session participants

10:30am 299er Silver Swiss Teams I (single session)
49er Silver Pairs
Open Silver Pairs
2:30pm 299er Silver Swiss Teams II (single session)
49er Silver Pairs
Open Silver Pairs

ALL PAIR EVENTS ARE SINGLE SESSION SILVER POINTS
Open - A: 1500+; B: 500-1500; C: 0-500
299er - A: 200-300; B: 100-200; C: 0-100
49er - A: 20-50; B: 5-20; C: 0-5
Average Masterpoints

Oklahoma. Books will be onsite for your bridge supply needs. * Pictures and Results posted daily at www.BridgeInDallas.com
Online Partnership Desk at www.BridgeInDallas.com or contact Susan Keys at sbkeyes@att.net or (214) 543-8622

Big D Fall Sectional

Richardson TX
Nov 3-6, 2011
457 players. 495 tables.

- 1 26.96 M. Aslam Ansari,
- 2 24.83 Pat Cassidy,
- 3 22.63 Leonard Schaan,
- 4 22.59 Bart Bramley,
- 5 22.50 Petra Hamman,
- 6 21.64 Hemant Lall,
- 7 19.33 Jay Gibson,
- 8 17.50 Harry Elliott,
- 9 16.49 Ann Roberts,
- 10 16.31 Bill Staats,

Thursday Compact KO-#1-10 Tables 1. Billy Leeper-Mary Orock-Pat

Cassidy-Jerry Derby 2. Claybourne Waldrop Jr-Melody Gann-Virginia Sherman

Thursday Compact KO-#2-10 Tables 1. Joe Everette-Patrick Horsley-Jeffrey Kroll-Joseph Volanski 2. Leah McCarthy-Carolyn Bradford-Nancy Morse-Donna Rasmussen

Thursday Compact KO-#3-12 Tables 1. Patricia Marchman-Gay Anderson-George Burcham-Cecil Parsons 2. FONSE RAGLAND-SALLY LANCASTER-JAMES RICHMAN-NANCY FELLMAN

Saturday KO Bracket 2-7 Tables 1. Catherine Tucker-Dorsey Shaw-Bonnie Kay Yetter-Edward Yetter 2. Elaine Lagerstrom-Patricia Rose--

Nancy Jipp-Pat Jortner

Saturday KO Bracket 3-6 Tables 1. John Nydick-John Pataki-Patricia Marchman-George Burcham-Judy Corey Edmiston 2. Kathy Coleman-Francis Chang-Jane Larimore-Jacqueline Montgomery

Saturday KO Bracket 4-7 Tables 1. Mary Lynn Trentham-Gay Schleicher-Jo Driscoll-Robert Schmidt 2. Susan Sisk-Edwin Milt-Wesley Archer-Jorn Jamieson

Fri Knockout Bkt 1-6 Tables 1. Shirley Ashby-Vi Ganeles-Mary McGinnis-Susan Khanna 2. Dewitt Hudson Jr-George Farrington-La Quitta Talbot-Herbert Fallin Jr, **Fri Knockout Bkt 2-6** Tables 1. Joe

Everette-Patrick Horsley-Jeffrey Kroll-Joseph Volanski 2. Jacqueline Montgomery-Francis Chang-Barbara Baker-Thomas Miyake

Fri Knockout Bkt 3-7 Tables 1. James Richman-Nancy Fellman-Bruce Harbour-Linda Scott 2. Mary Lynn Trentham-Gay Schleicher-Louise Shanley-Jo Driscoll

Flight A Swiss Teams-18 Tables / Based on 50 Tables AX1. M. Aslam Ansari-Leonard Schaan-Jay Gibson-Gerrie Owen AX2. Mike Hout-John Schwartz-Marcus Poe Jr-Gerry McKim

Flight B Swiss Teams-24 Tables B1. Rich Brandenburg-Tony Pellegrini-Joseph Gill-Adele Hudgins B2.

Stephen Hibbard-Penny Mixon-Richard McGill-Marlene Round C1. Jay Titone-Grace Ann Titone-Rosalee Hacker-Martin Schwartz C2. N Tripode,-David Luzzatto-Jack Brennan-Roger Harris

Thurs Morn 499er Pairs-6.0 Tables ABC1. Frank Durante-Diana Chen A2. Phyllis Spencer-Nancy Simpson BC2. Anna Deaton-Nancy Love

Thurs Morn Open Pairs-9.0 Tables / Based on 15 Tables AB1. Ann Berning-Diane Klein A2. Jerry Hess-Michael Sutterfield B2C1. James Richman-Nancy Fellman C2. Judith Evans-Norma Ann Sawyers **Thursday Aft Open Pairs-16.0** Tables / Based on 27 Tables A1.

Randolph Worsham-Stephen Sinclair A2/3 Linda Spangler-Charles Price A2/3 Barbara Nelson-Jeanine Wofford B1. Randall Smith-Mark Hatkoff B2. Stephen Shuman-Marvin Migdol C1. Leslie Conant-Eloise Meachum C2. Mathilde & Tadeusz Wiewiorowski
Thursday Aft 499er Pairs-6 Tables A1. Elizabeth Donner-Lynell Pinion A2BC1. Janet Meyer-Fritzie Roop C2. Linda Jimmerson-Suzanne Smith
Thursday Aft 199er Pairs-4.5 Tables AB1/2 Judy Yarbrough-Irene Stone AB1/2 Joyce Davis-Molly Gunter
Thurs Eve Swiss Teams-22 Tables AB1/2 C1. Sandra Hollon-Ruby Hill-Donna Gibbs-James Cothran AB1/2 Margot Hirsch-Edwina Corn-Catherine Tucker-Dorsey Shaw C2. Jane Kirby-Kate Hopkins-Diana Winkelmann-Lynn Cooper
Thurs Eve Open Pairs-9.0 Tables / Based on 15 Tables A1. James Thurtell-James Bauer A2. Linda Spangler-Michael Murph B1. Stephen Shuman-Marvin Migdol B2C1. Mark Shekter-Jim Farmer C2. Brian Gelles-Janet Gelles
Thurs Eve 499er Pairs-5.5 Tables

DE1. Leah Margerison-Rick Margerison D2. Cheryl Clark-Sharon Tomnitz E2. Ginger Morgan-Nancy Young.
Fri Aft 499er Pairs-10.0 Tables A1. Jackie Long-E J Nowak A2BC1. Renee Levy-Andi Gordon B2. Jack Brennan-Melvin Sharp C2. Nancy Young-Ginger Morgan.
Fri Aft Open Pairs-35.0 Tables / Based on 49 Tables AB1. Ricardo Azevedo-Malcolm Barnebey A2. Ann Roberts-Jessica Brown B2C1. Rich Brandenburg C2. Leslie Conant -Eloise Meachum,
Fri Aft 199er Pairs-4.0 Tables AB1. Joyce Abramowitz-Jan Warner C1. Patricia Ducayet-Edwin Ducayet Jr C2. Bernadette Solomon-Karen Silberman
Fri Morn 499er Pairs-9.0 Tables D1. Billie Allen-Nancy Simpson D2. Jane Kirby-Lynn Cooper E1. Sheri Wolkenstein-Nancy Latner F2. Judy Dolginoff-Delilah Perkinson C1/2 Frank Durante-Ratham Vasanthkumar C1/2 Asa De Vries-Donna Guthrie
Fri Morn Open Pairs-7.5 Tables / Based on 17 Tables A1. Jeanine Wofford-David Nurenberg A2BC1.

Janet Borg-David Borg BC2. Peggi Kenny-Harry Kenny
Sat Eve Open Pairs-9.0 Tables / Based on 13 Tables A1. Mickey Tryon-Stephen Hibbard A2. Joan Jackson-Norman Beck B2. Bob Friz-Eric Diamond C1. James Richman-John Pelletti C2. John Davis-Bert Dempsey
Sat Eve Open Swiss Teams-10 Tables AB1. Jim Harp-Chris Anderson-Judith Lotridge-Harry Elliott A2. Roy Baughman-Marion Gebhardt-Derrell Childs-Marcia Hutchison B2. Lee Gilliam-Carolyn Motes Jr-Preston Morrow-Gloria Krauter C1. Brian Gelles-Janet Gelles-David Luzzatto-David Greims
Sat Aft Open Pairs-33.5 Tables / Based on 51 Tables A1. Pat Cassidy-Robert Buchanan A2. Leonard Schae-M. Aslam Ansari B1. Eileen Smith-James McCommons B2C1. Michael Cain C2. Chris Anderson-Harry Elliott
Sat Aft 499er Pairs-8.5 Tables AB1. Richard Page-Rebecca Page A2. Penny Hawkins-E J Nowak B2C1. Andi Gordon-Renee Levy C2. Judy Dolginoff-N Milanese
Sat Aft 199er Pairs-8.0 Tables AB1.

Joseph & Philippa Anderson A2/3 Emily Ray-Mary Burdette A2/3B2C1. Abu Qureshi-Beth Castleberry C2 Linda Neal-Barbara Reeves
Saturday KO Bracket 1-6 Tables 1. Bart Bramley-Bob & Petra Hamman-Hemant Lall 2. Bill Staats--Nancy Passell-Gary Bush-Barry Schaffer
Sat Eve 499er Pairs Tables ABC1. Barbara Ferm-Marsha Young Sat Morn 199er Pairs-3.0 Tables 1. Bernadette Solomon-Karen Silberman 2. Barry Cooper-Lynn Cooper
Sat Morn Open Pairs-9.0 Tables / Based on 21 Tables A1. Pat Cassidy-Robert Buchanan A2. Pat Measley-Barbara Nelson Jack Borenstein,-Ned Nolte B1. Lee Huber-Mark Hatkoff B2C1. Janet Borg-Maria Gregorat 2 Joan Daniel-Jo England
Sat Morn 499er Pairs-9.0 Tables ABC1. Judy Dolginoff-N Milanese A2. James Richman-John Pelletti B2. Martha Harvey-Joan Paradeis C2. Jon Wolkenstein-Sheri Wolkenstein
Fri Eve 499er Pairs-3.0 Tables AB1. Pawel Hanus-Kasia Koenig
Fri Eve Open Pairs-11.0 Tables / Based on 14 Tables A1. Linda Spangler-Charles Price A2B1. Harry

Elliott-Jim Harp B2C1. John Davis-Bert Dempsey C2. Vernon Earl Hodge-Brian Dalton
Fri Eve Open Swiss Teams-13 Tables A1. Bill Staats-Barry Schaffer-Peggy Sutherlin-Nancy Passell 2/3 Nancy Kornegay-Stephen Kornegay-Hugh Hillaker-Merri-Jo Hillaker A2/3 Larue Stott-Gail Wells-Jessica Brown-Ann Roberts B1. Edward Yetter-Margot Hirsch-Bryan Morgan B2C1. Richard Gordon-Miriam Usry -David Clegg-Glenda Cooper C2. Jo Hammett-Donna Gibbs-Melba Lancaster-Virginia Boudreau
Sunday Morn 499er Swiss-8 Tables A1. Renee Levy-Andi Gordon-Miriam Usry-Richard Gordon A2BC1. Barbara Ferm-Marsha Young-Jennifer Rao-Ginger Morgan B 2 Wesley Archer-Jorn Jamieson-Yuri Lemeshev-Genny Lemeshev,
499er Sun Aft Swiss-8 Tables AB1. Josephine Basel-Allen Haskell-Janet Hughes-Sharon Proctor A2. Lynell Pinion-Elizabeth Donner-Dee Bridgewater-Barbara Horowitz B2. Wesley Archer-Jorn Jamieson-Yuri Lemeshev & Lemeshev C1. Barbara Ferm-Marsha Young-Jennifer Rao-Ginger Morgan

BIG D WINTER SECTIONAL



Thurs CKO #1
Billy Leeper - Jerry Derby
Pat Caassidy - Mary Orock



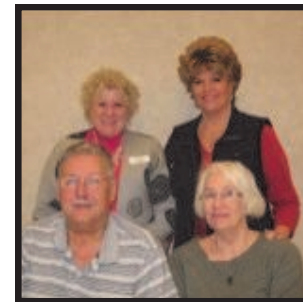
Thurs CKO #2/Fri KO 2
Jeffrey Kroll , Joseph Volanski
Joe Everette, Patrick Horsely



Thursday Eve Open Pairs
Jim Bauer, Jim Thurtell



Thursday CKO#3
Gay Anderson, George Burcham
Cecil Parsons, Pat Marchman



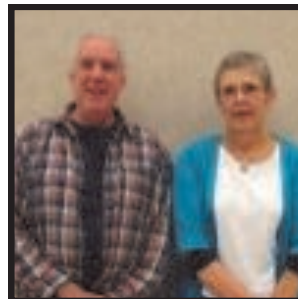
Thurs Eve Swiss Teams 1/2
Donna Gibbs, Sandra Hollow
James Cothran, Ruby Hill



Thurs Eve Swiss Teams 1/2 B
Margot Hirsch, Dorsey Shaw
Edwina Corn, Catherine Tucker



Fri KO Bracket 3
Bruce Harbour, James Richman
Linda Scott, Nancy Fellman



Sat Aft Open Pairs
Robert Buchanan - Pat Cassidy



Sat Afternoon Open Pairs C
Charles Burke, Michael Burke



Sat KO Bracket 2
Dorsey Shaw, Catherine Tucker
Bonnie & Ed Yetter



Sat KO Bracket 3
John Nydick, Pat Marchman,
George Burcham



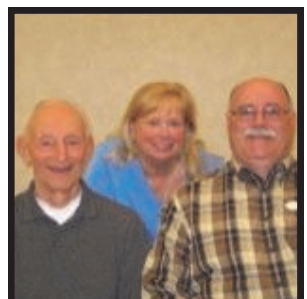
Sat Afternoon Open Pairs B
Eileen Smith, James McCommons



Sat Eve Open Pairs
Mickey Tryon, Stephen Hibbard



Sat Eve Open Swiss
Judy Lotridge, Chris Anderson
Harry Elliott, Jim Harp



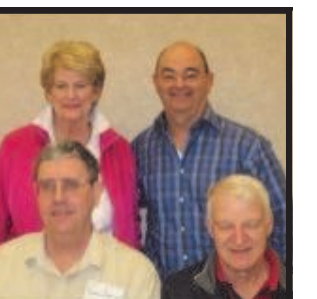
Sat Eve Swiss 1st C
David Luzzatto, Janet &
Brian Gelles



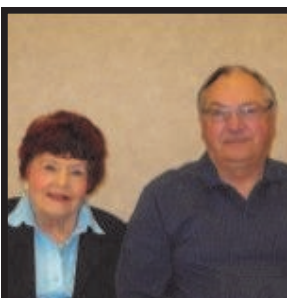
Sun Flight C Swiss Teams
Jay Titone, Martin Schartz
Grace Titone, Rosalee Hacker



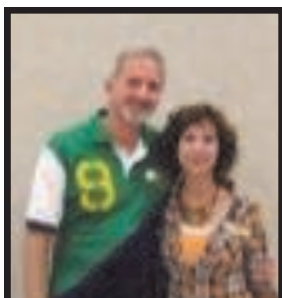
Sun Flight A Swiss Teams
Gerrie Owen, Jay Gibson.
M Aslam Ansari, Leonard Schaeen



Sun Flight B Swiss Teams
Adele Hudgins, Rich Brandenburg
Joe Gill, Tony Pellegrini



Fri Eve Open Pairs
Linda Spangler, Charlie Price



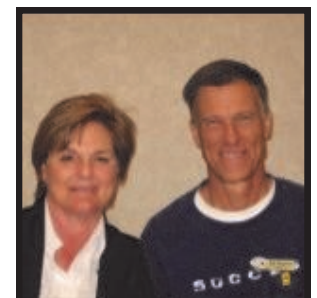
Sat Afternoon 499 Pairs
Richard & Rebecca Paige



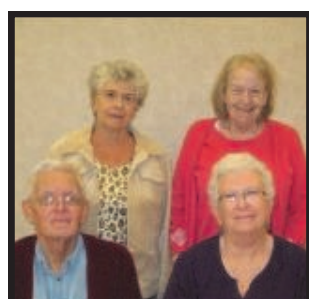
Sun Aft 499er Swiss C
Barbara Ferm, Ginger Morgan,
Marsha, Jennifer Rao



Sat Eve 499er Pairs
Barbara Ferm, Marsha Young



Thurs Eve 499er Pairs
Leah & Rick Margerison



Sun Aft 499er Swiss
Sharon Proctor, Janet Hughes
Allen Haskell, Jo Basel



Sat Morn 499er Pairs
Judy Dolginoff, N Milanese



Sunday Morn 499er Swiss
Renee Levy, Andi Gordon
Richard Gordon, Miriam Usry

**Unit 183
Fort Worth**
Millie Williams


How's your diet going? All these Christmas parties have caught up with me and I have the pounds to show for it. The directors have all treated us to some fine Christmas parties with food fit the Kings and Queens we are. Thank you to all of them for taking such good care of us all year long. At Arlington's party, Mary Jane Orook and Carolyn Pinto posted a 71.88% game. Great Game!

I don't know about you, but I'm wondering how it can be time for a column for 2012! As this year is ending I can only say Unit 183 has been one busy and productive place for bridge. Our Unit 16 President, DeWitt Hudson, announced that the Unit has been awarded an additional Regional in 2014. We are all incredibly excited and committees are being formed by our Tournament Chair, Carolyn Pinto to be ready for this event. The Unit has been able to book the Hotel at DFW International Airport for the 2012 Regional and feel players will enjoy this venue which will be accessible to players in all North Texas.

The Unit sponsored a game on November 12 coinciding with a specially called meeting to vote on the proposed By-Law changes. The last By-Law change was in 1977. Margot Hirsch chaired the committee, who worked long hours to bring the By-Laws into the 21st century. Thanks to each of them for their hard work. All proposals but one passed.

The Unit Game held that day in the Fort Worth Studio honored all Veterans in the Unit with a free pay for the game. There were 16 tables in the Open Game, won by J'Neane Huey and her partner, Jerry Cosby, Mary Hoger and Pat Cassidy were second overall. There were 8 tables in the 0-1500 Game. Mary Lou Collins and Ruby Hill were first overall and Jane Rushford and Ann Sutherland were second overall. Congratulations to the winners and thanks again to our Veterans for serving our Country!

Our newest Life Masters are Grace Ann and Jay Titone. If you have news you'd like to tell me about, please email me at mil-liewms@yahoo.com

The Unit 183 Board of Directors attended a Christmas dinner on Dec. 11 where officers for the coming year were elected. The new slate is Diane Washabaugh, President; Tom Moore, Vice-President; Carolyn Pinto, Treasurer; and Linda Spangler, Secretary. Congratulations to this great group as they lead us into a new year. Remember, they can't do it all by themselves...we must all pitch in and do our part if we want to see continued growth and good-will in our Unit.

The next Unit 183 Sectional tournament is moving to a different location. We will be playing in the Crowne Plaza Hotel on I-35. This location will be more convenient to players from Dallas the the mid-cities. Mike Goldman, Max Jackson and Carolyn Pinto have been working for some time to secure a location for our sectionals. Rooms will be \$85.00...but the best part is FREE PARKING! We hope you'll come try this new place...as always, lots of chocolates!

Play Well and Have Fun!

**Unit 187
Corpus Christi**
Dee Schade


Thanks to all who made our Halloween Regional a success especially those that attended. We hope everyone had a great time & racked up

those needed gold points. We could not have this event without Martha DeCou and her cadre of workers. We are grateful to all of them.

Rockport Bridge Club holds their games in the Woman's Club. This building is listed as a Texas Historic Building. Add to this that players are treated to a full view of Rockport harbor with its sailboats & working shrimp & oyster fleets. Occasionally a bottle nose dolphin is spotted and there are always herons and or pelicans waiting for their chance for a shrimp or two. No wonder folks have trouble concentrating on the bridge game! The annual Christmas party was held December 17. A ham was furnished by the club and players brought a covered dish. What a food layout. The only regret is not being able to sample all the dishes. The Rockport Pilot is now publishing the Tuesday top scores. Also the club is using Face book to publish who is playing in the upcoming game, phone numbers (for friends only), as well as linking to scores on the ACBL website.

A pot luck dinner drew 7 tables on Tuesday night, November 15. The food & wine were great. Thanks to all who participated. The overall winners were Bob Gerberich & Mary Tryer. Ann Crumpler & Martha DeCou were 2nd. Flight B winners were Pat & Barry Krause (our winter Texans from Ontario). Lina Crumpler & Mahesh Maruvada were 2nd. Congratulations to all.

Unit 187's annual Christmas party was held Sunday, December 4 at the Corpus Christi Yacht Club. We had 16 tables with Dee Schade directing. Overall winners were Marilyn German & Penny Snow. Libby Boeye & Kay Mrazek were second. Flight B winners were Bob Coffey & Dave Ticen. George & Joyce Seitz were second. Flight C winners were Marilyn Bein & Judy Schrupp. Darlene Kinstley & Barbara Layton were second. As always this was a fun afternoon of bridge, food and spirits. The Yacht Club is consistently dependable with their menu. Excellent is the only word to describe it! What fun to see everyone in their holiday attire. Players came from Corpus Christi, Kingsville, Pasadena, Rockport and Victoria as well as Ontario! Love those winter Texans!

A lot of special games are planned for 2012. The charity games are \$1 extra with the money going to the named charity. All of these special games pay extra points. Take advantage of the opportunity to add to that coveted point count. Grab your favorite partner and come on out! All games are listed on the board at the club. Tuesday, January 17, is pizza night at no extra fee. Also it's not too early to plan your dates for the Rockport tournament, February 17-19. The tournament hotel is the Holiday Inn Express with special bridge rates and the same amenities we have been getting down the highway. Please note the schedule is different for Saturday; an earlier start with a meal between sessions & of course an earlier finish.

This month please get to know one of the rising stars of Unit 187, Dave Ticen. Dave is out of Victoria and is enjoying a great deal of success this year. He is on the faculty of Victoria College, where he has been for the last 16 years and says he qualifies for the seniors' events. Dave met Hilda about two weeks after moving to Victoria and they've been together ever since. Prior to coming to Texas, Dave was in the Seattle area where he was born & raised. Right out of college he taught in high school & community college. After 7 years of teaching, he became a stockbroker. He did this for about 5 years and then had a variety of jobs, mostly in sales. Dave says he learned to play bridge in college & played about a year of

duplicate in the Olympia area around 1972-73. He quit playing to attend graduate school. After his first son was born in 1974, it really put the nail-in-the-coffin. Dave says he always knew he would come back to the game, but never thought it would take so long. In the late summer of 2009, after not playing a hand in over 30 years (although the bridge column was daily reading), he called the number for the local duplicate club in Victoria & started to play. His first tournament was in February 2010. He said he and his regular partner, Bob Coffey, earned about one point over three events that added to the 35 that ACBL found he had earned in the early 70s. As he has done with other things in his life, he jumped into the game with everything he could give. He read & studied lots of books on bridge and has a burning desire to be the best player he can be. Although Dave says he is not close to being there yet, he has enjoyed a lot of success the past year. His masterpoint holding has increased by over 250 points this year. He is certainly going to set a new record for the most masterpoints earned by a player in a given year for Unit 187 in many years. Dave says he does enjoy the masterpoints as a way of measuring progress versus the people you compete against, but his main focus is to improve. The most enjoyable parts of the game are the intellectual aspect, the competition & the friendships & camaraderie with others who share this passion of bridge, with the latter probably being the most satisfying. On a personal note, Dave is always gracious at the table & we are really proud to have him.

Bridge club of South Texas scores are now on the ACBL web site. These are normally posted within an hour or so after the game, so you can go home, relax and peruse the results in a timely manner. Simply go to ACBL.org, select club results, Texas, Corpus Christi and select the game you want to look at.

Please send your club news to me at cdeoro@aol.com.

Bewitching Corpus Christi

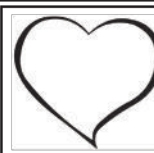
Corpus Christi
October 25-30, 2011
384 players. 738 tables.

1 89.26 Thomas Peters, Grapeland
2 89.26 Gary Cohler, Miami FL
3 89.26 Chris Compton, Dallas-4
4 80.86 Susan Key, Dallas
5 80.49 Carolyn Peters, Grapeland
6 59.18 Gary King, Houston
7 59.18 Carolyn Fox, Manvel
8 55.13 Robert Morris, Houston
9 55.13 Eddie Wold, Houston
10 52.44 Ed Rawlinson, Helotes
11 52.44 Dave Swarouth, San Antonio
12 51.92 Donna Swarouth, San Antonio
13 51.23 Ira Hessel, San Antonio
14 51.23 Ellen Hessel, San Antonio
15 49.73 Milton Ellisor, Spring
16 49.73 Becky Ellisor, Spring

Knockouts

Roma and Stanley Marshall KO-Bracket 1-9 Tables 1. Thomas Peters-Carolyn Peters, Grapeland; Chris Compton-Susan Key, Dallas; Gary Cohler, Miami FL 2. Virginia Noelke, San Angelo; Venkatrao Koneru-Dave Swarouth-Donna Swarouth, San Antonio; Ed Rawlinson, Helotes 3/4 James Bauer-James Thurtell, Dallas; Marion Gebhardt, Richardson; Roy Baughman, Pantego 3/4 H Robert Gerberich Jr, Corpus Christi; Mary Tryer, Kingsville; Bill Riley-Nancy Riley, Kingwood

Roma and Stanley Marshall KO-Bracket 2-9 Tables 1. Thomas Martinsen-Linda Martinsen, Bellaire; Mark Leighton, Pasadena; Marsha Shortt, Houston 2. Michael McKown-



Heart of the Metroplex Arlington Sectional

February 10-12, 2012

Grapevine Convention Center 1209 South Grapevine, TX
(Free Parking at Bridge Site) 817-410-3459 or 817-410-3424
All Events Will Be Stratified by Average

Friday, February 10

Stratified Open Pairs (single sessions) 1:30 & 7:00 pm
Stratified 299er Pairs (single sessions) 1:30 & 7:00 pm
0-20 Newcomer Pairs (single sessions) 1:30 & 7:00 pm
Compact KOs (sessions I & II) 1:30 & 7:00 pm
Swiss Teams (one session) 7:00 pm

Saturday, February 11

EASYBRIDGE! (under 50 MP) (single session - \$8 entry) 9:00 am
Bracketed KOs (sessions I, II & III) 9:00 am, 1:30 & 7:00 pm
Stratified Open Pairs (single sessions) 1:30 & 7:00 pm
Stratified 299er Pairs (single sessions) 1:30 & 7:00 pm
0-20 Newcomer Pairs (single sessions) 1:30 & 7:00 pm
Compact KOs (sessions I & II) 1:30 & 7:00 pm
Swiss Teams (one session) 7:00 pm

Sunday, February 12

Strati-Flighted Swiss Teams 10:00 am & TBA
Stratified 299er Swiss Teams (single sessions) 10:00 am & TBA
Stratified Open Pairs (single sessions) 10:00 am & TBA
Meal Between Sessions (4 tickets per team; extra tickets \$8 each)

Stratifications

Pairs A: 2000+ B: 750-2000 C: 0-750
299er Pairs/Teams A: 100-300 B: 50-100 C: 0-50
Strati-Flighted Teams A: 3000+, AX: 0-3000 (play together)
B: 750-2000 C: 500-750 D: 0-500

Entry Fees

Pair & KO Events: \$12 per player/session; Sunday Swiss \$100//Team
Non/Unpaid ACBL members: \$1 additional per session

Host Hotel

Super 8 Hotel 817-329-7222 250 East Hwy 114, Grapevine, TX 76051
Rate: \$79 Double or King - Free Airport & Convention Center Shuttle, Free local calls, Complimentary Breakfast, Free Internet
Reservations by February 1 to get preferred rate; ask for bridge rate.

Tournament Chairs

Dee Berg 817-913-9962 deeberg2@sbcglobal.net
Mary Ellen Stanton 972-623-1150 maryellen44@juno.com

Partnership

Doris Doores 817-267-9382 utroadrunner@tx.rr.com
Dorothy Bedford 817-795-7746

Caddy Chairs

Ann Overfield 817-468-0666 pa-texan@swbell.net
Dorothy Moore 214-334-3926 drmoores@flash.net

Speaker Program: Friday & Saturday at 6:15 pm

Map and results: <http://d16acbl.org/UI76/ABC/adbc.htm>

Ben Ball, Sugar Land; Yvonne Strangmeyer, Houston; Joyce Gore, Missouri City 3/4 Frances Galbraith-Kay Mrazek-Karen Ryan, Corpus Christi; Joanne Murad, The Woodlands 3/4 Curtis Hitt-Judy Hitt-Jacqueline Fiegel-Immie Pamplin, **Roma and Stanley Marshall KO-Bracket 3-16 Tables 1.** Shirley Shelton-Sherry Roberts-Peggy Singer-Beth Hankins, Longview 2. Cynthia Struve-Clemens Struve, Corpus Christi; Alan Zane-Bobbie Newman, Houston 3/4 John Chaplik-Barbara Chaplik, Grand Junction CO; Dale Grady-Juanita Val Grady, Pearland 3/4 Geri McKallip-Elisabeth Cabiness-Tish Stephenson-Gail Gillespie, Houston
Patsy Sole KO-Bracket 1-10 Tables 1. Ira Hessel-Ellen Hessel, San Antonio; Gary King, Houston; Carolyn Fox, Manvel 2. Donald Varvel-Eleanor Sherwyn, Corpus Christi; David McCarron-Mary McCarron, Austin 3/4 Hans Strohmer-Nancy Strohmer, Houston; Donna Floyd, Sugar Land; Judy Walker, Missouri City 3/4 Linda Lawrence-Becky Mosely-Rebecca Brown, San Antonio; Paula Warren, New Braunfels
Patsy Sole KO-Bracket 2-10 Tables 1. Charles Loeffler, Junction; Toni Hurlbut-Alberta Birk, Mason; Eugene Lux, Fredericksburg 2. Dale Irish-Rita Wiegenstein, Georgetown; Michael Harris-Sandra Harris, Austin 3/4 Patsy Howell-Anne Knott-Yvonne Pierce, Houston; Mary Janak, Webster 3/4 Susan McLaurin-Janet Williams-Susan Theiss-Karen Hearn, Houston
Patsy Sole KO-Bracket 3-9 Tables 1. Brian Gelles-Janet Gelles, Fairview; Nancy Starks-Joanna Overbaugh, Lake Jackson 2. Vicki

Dailey, Houston; H Patricia Leavitt-Maureen Viaclovsky, Friendswood; Anik Waters, League City 3/4 Earl Johnson-Miriam Cooper, Beaumont; Patricia Schiwart, Port Arthur; Astrid Roy Clements, Baton Rouge LA 3/4 Jerrell Wolaver-Janie Wolaver, Jefferson; Robert Cowling-Karen Cowling, Edgewood
Thu/Fri KO-Bracket 1-9 Tables 1 Susan Key-Chris Compton, Dallas; Thomas Peters-Carolyn Peters, Grapeland; Gary Cohler, Miami FL 2. Virginia Noelke, San Angelo; Venkatrao Koneru-Dave Swarouth-Donna Swarouth, San Antonio; Ed Rawlinson, Helotes 3/4 Robert Morris-Mary Pat Gentry-Carolyn Lanier-Eddie Wold, Houston; Becky Ellisor-Milton Ellisor, Spring 3/4 Mary Tryer, Kingsville; H Robert Gerberich Jr, Corpus Christi; Bill Riley-Nancy Riley, Kingwood
Thu/Fri KO-Bracket 2-13 Tables 1. Shirley Shelton-Beth Hankins-Peggy Singer-Sherry Roberts, Longview 2. Kenneth McAllister-Phyllis Kuchta, Pearland; K Voges, Converse; Stephen Simpson, San Antonio 3/4 Keith Estep-M Louise Wissler-Estep, Ruidoso NM; Pablo Siegal-Eleanor Siegal, San Antonio 3/4 John Chaplik-Barbara Chaplik, Grand Junction CO; Juanita Val Grady-Dale Grady, Pearland
Thu/Fri KO Bracket 3-14 Tables 1. Julie Valentine-Steven Hollahan-Robin Tucker-Margaret Bennett, Austin 2. Laurene Jacob-Sally Disanza-Barbara Rodriguez-Patricia Webb, Austin 3/4 Faye Baker-Ann Blohm, Houston; Kathy Sinkin-Amor-Bob Steidel, San Antonio; Jeane Crumpler, Conroe 3/4 Mary Jane Kinnebrew-Rhonda Bryant-Vivian Cyprus-Kyle Lueders, Hous-



FLIP-FLOP OVER TO THE ROCKPORT BEACH TOURNAMENT

FEBRUARY 17-19, 2012
BIRDERS' HEAVEN, GOLFER'S DREAM
FISHERMEN'S DELIGHT & SHOPPER'S PARADISE

Friday, February 17 SPECIAL GOODIES DAY!

Stratified Open Pairs (single session)....1:15 P.M.
Stratified Open Pairs (single session)....7:15 P.M
BEACH BALL NEWCOMER 0-199er GAMES BOTH SESSIONS

Saturday, February 18 Lunch Between Sessions
Stratified Open Pairs 10:30A.M. & 2:45 P.M. 2 Separate Games
BEACH BALL NEWCOMER 0-299er ALL SESSIONS
When Possible

Friday & Saturday Strats A 1500+, B-500-1500, C-0-500

Sunday, February 19 DELICIOUS BAR-B-Q DAY
Gail Huie Swiss Teams
(stratified by average masterpoints) 10:00 A.M. & TBA

Hotel Holiday Inn Express & Suites, 361-729-4444, 925 Lady Claire St. Rockport, TX, 2/10 cut off, \$89 includes breakfast.

Strat A 1500+ Strat B- 500-1500 Strat C- 0-500
A non-smoking tournament with smoking breaks
LOTS of FREE GOODIES!

PLAYING SITE Saltwater Pavillion Rockport Beach

TOURNAMENT CHAIRMAN	PARTNERSHIP
MARTHA DECOU	BETTY HILL
(361)853-9196	(361)729-1790
mizcou@stx.rr.com	betthill@yahoo.com

810 Seabreeze (361)537-2353 playing days
\$10 per session Fri. & Sat. \$96 /team Sunday Swiss (\$2 more per session for nonpaid ACBL members)



Cypress ; E Lilly, Bellaire ; Carol Wilson, Houston 2. Martha De Cou-Margaret Crumpler-Ann Crumpler, Corpus Christi ; Patricia Jackson, Kerrville 3. Cynthia Struve-Clemens Struve, Corpus Christi ; Barbara Williams, Malakoff ; Jo Booth, Eustae 4. Rhonda Bryant-Mary Jane Kinnebrew-Kyle Lueders-Vivian Cyprus, Houston
Fri-Sat KO Bracket 1-9 Tables 1. Shawn Quinn-Joe Quinn, Sugar Land ; Ellen Hessel-Ira Hessel, San Antonio ; Gary King, Houston ; Carolyne Fox, Manvel 2. Terry Riely -Carolyn Riely, San Antonio ; James La Fountain, Temple ; Jon Richard Ware, New Braunfels 3/4 Erez Hendelman, New York NY; Shirley Matthews, Lindale ; Eric Wolff, La Mesa CA; Hank Eng, San Antonio 3/4 David Pearlman, Trophy Club ; James Andre, Sugar Land ; Ira Garrison, Houston ; Philip Duterme, Bellaire
Fri-Sat KO Bracket 2-9 Tables 1. Susan Spencer, Spring Branch ; Jo Neesvig, San Antonio ; Ronald Francey, Corpus Christi ; Charles Lawson, Huntsville 2. Dee Baker-Anyemarie Weaver-A Di Baggio-Sherry Johnson, San Antonio 3/4 David Ticen-Robert Coffey, Victoria ; Donald Varvel-Eleanor Sherwyn, Corpus Christi 3/4 Sandra Pollard-Joyce Wormser, Pearland ; Judith Ensor-Charles Ensor, Seabrook
Fri-Sat KO Bracket 3-12 Tables 1. Terri O'Brien-Lucerne Bunch-Patricia Berry-Esther Ellis, Austin 2/ John Manderscheid-Jan Guthrie-Dale White, Houston ; Thomas Turnipseed, Jackson MS 3/4 Patricia Skelton, Mission ; Carol Moore-Gretchen Chapa, McAllen ; Charlotte Lunsford, Milford IA 3/4 Lynn Luster-Elaine Brill, Houston ; Nancy Starks-Joanna Overbaugh, Lake Jackson

2-Session Events

Thursday Open Pairs-13.5 Tables A1 Janet Clark-Thomas Clark, Austin A2B1. Linda Rensi, Katy ; Julia Blancet, League City A3. Edwin Lewis III, Bolton CT; Ed Lewis, Falls Church VA A4B2. Phyllis Pruet, Corpus Christi ; Betty Marriett, Port Aransas A5/6B3. Hank Eng, San Antonio ; Eric Wolff, La Mesa CA5/6 Marilyn German, Corpus Christi ; Penny Snow, Beeville B4. Phyllis Mehrens, Leander ; Martha De Cou, Corpus Christi B4. Dee Baker-Anyemarie Weaver, San Antonio C1. Donald Hixson-Virginia Hixson, Rapid City SD C2. Diana Apgar, Austin ; Marilyn Holmes, Georgetown C3. Jennifer Rao, Dallas ; Judy Floyd, Arlington
A/X Pairs-9.0 Tables / Based on 22 Tables A1/2 James Bauer-James

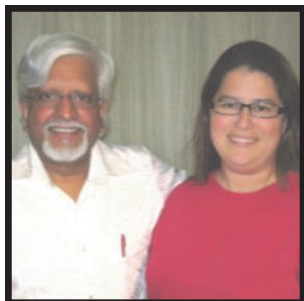
Thurtell, Dallas A1/2 Marion Gebhardt, Richardson ; Roy Baughman, Pantego A3. Stephen Bruce, Austin ; George Pisk, Manchaca X12. Julia Blancet, League City ; Linda Rensi, Katy X1/2 Dee Schade-Phyllis Pruet, Corpus Christi X3. Charles Newton Jr, Rosenberg ; Becky Mosely, San Antonio
Ann Crumpler Str Open Prs - 18.0 Tables ABC1. Janet Clark - Thomas Clark, Austin A2B1. Mark Leighton, Pasadena ; Marsha Shortt, Houston A3B2C1. Sandra Harris - Michael Harris, Austin A4B3C2. Dale Irish - Rita Wiegenstein, Georgetown A5B4. Dee Schade - Phyllis Pruet, Corpus Christi B5C3. Brian Gelles - Janet Gelles, Fairview C4. Beverly Cantu - Diana Lecuona, Laredo C5. Cheryl Clark - Sharon Tomnitz, Dallas
Gold Rush Pairs - 13.0 Tables S1. Zach Garrison - David Garrison, Spring S2. Gayle Moyers, Austin ; Mark Heep, Round Rock S3. Sharon MacMorran - Kenneth MacMorran, Austin S4. Brian Gelles - Janet Gelles, Fairview S5/6 Martha Norman - Anita Albert, Austin S5/6E1. Dolores Reiley, San Antonio ; Clara Brinson, Asheville NC E2. Julie Valentine - Steven Hollahan, Austin E3 James Morgan, Cypress ; Brenda Metze, Houston E4. Walter Freitag - Diane Jobin, Houston E5. Janie Wolaver - Jerrell Wolaver, Jefferson
Jack Mehrens B/C/D Swiss-25 Tables B1. Linda Rensi, Katy ; Mark Leighton, Pasadena ; Marsha Shortt, Houston ; Julia Blancet, League City B2. Ann Crumpler-Pauletta Myers-Martha De Cou, Corpus Christi ; Becky Mosely, San Antonio B3CD1. Julie Valentine-Steven Hollahan-Anita Albert-Martha Norman, Austin B4. David Ticen-Robert Coffey, Victoria ; Donald Varvel-Eleanor Sherwyn, Corpus Christi B5C2. Jason Kiker-Fred Brown, Corpus Christi ; Susan Brown-Elizabeth Nystrom, Rockport ; Charles Newton Jr, Rosenberg C3D2. Mabel Byrnes-Susan Smegal-Betty Voss, Corpus Christi ; Janet Daniel, Corpus Christi C4. John Chaplik-Barbara Chaplik, Grand Junction CO; Karur Krishnan, Houston ; Margaret Crumpler, Corpus Christi C5/6D3. Marilyn Bein-Frances Smith-M Frances Schmidt, Rockport ; Betty Mengle, Corpus Christi C5/6 Bob Steidel-Kathy Sinkin-Amor, San Antonio ; Faye Baker-Ann Blohm, Houston D4. Carolyn Schafer, Fair Oaks Ranch ; Clara Brinson, Asheville NC; Cynthia Schwarz, Pipe Creek ; Dolores Reiley, San Antonio
Jack Mehrens A/X Swiss-13 Tables / Based on 38 Tables A1. Chris Compton-Susan Key, Dallas ; Gary Cohler, Miami FL; Thomas Peters-Carolyn Peters, Grapeland A2X1.

David Pearlman, Trophy Club ; James Andre, Sugar Land ; Ira Garrison, Houston ; Philip Duterme, Bellaire A3. Gary King, Houston ; Carolyne Fox, Manvel ; Marilyn German, Corpus Christi ; Kim Cox, Crp Christi A4. Michael Huston, Joplin MO; Rick Elliott, Houston ; Stephen Bruce, Austin ; George Pisk, Manchaca A5. Carolyn Lanier-Mary Pat Gentry-Eddie Wold-Robert Morris, Houston ; Becky Ellisor-Milton Ellisor, Spring X1 . Libby Boeye-Bill Mac Donald-Marilyn Mac Donald, Corpus Christi ; Phyllis Mehrens, Leander **Thu Aft Side Series - 10 Tables** A1. Michael Huston, Joplin MO; Rick Elliott, Houston A2B1. James Fisk, Los Lunas NM; Orpha Sears, San Antonio A3B2C1. Mabel Byrnes - Betty Voss, Corpus Christi B3. Charles Loeffler, Junction ; Eugene Lux, Fredericksburg C2. Toni Hurlbut - Alberta Birk, Mason C3. Frances Smith - Tiny Beckham, Rockport
Thu Eve Side Series - 6.0 Tables AB1, Carroll Frogge, Kansas City MO; John Hilbig, Bulverde A2. Erez Hendelman, New York NY; Shirley Matthews, Lindale B2. Herbert Warner - Marcia Warner, Montgomery C1. Rosemary Stielow, Austin ; Linda Banks, San Marcos C2. David Wilson - Claude Melton, Corpus Christi
Fri Eve Side Series - 6.5 Tables ABC1. Janis Koenig, Kingsland ; Sharon Gassman, Burnet AB2. Gilda Reynolds - Dianne Jones, Austin C2. I Jean Whipple - Lawrence Whipple, Corpus Christi **Grace Barreda Side Series - 7.5 Tables** AB1. Gilda Reynolds - Dianne Jones, Austin A2. Betty Marriett, Port Aransas ; Phyllis Mehrens, Leander B2. James Fisk, Los Lunas NM; Orpha Sears, San Antonio C1. Stephen Hoffman - Judith Hoffman, San Antonio C2. Katherine Powers - Russel Powers, Rockport
Grace Barreda Side Series - 23.25 Tables / Based on 11 Tables 1/2 Rick Elliott, Houston 1/2 Michael Huston, Joplin MO 3/4 Dianne Jones, Austin 3/4 Gilda Reynolds, Austin 5 Phyllis Mehrens, Leander
Eloy Barreda Side Series - 3.5 Tables AB1. Hugh Miller - Catherine Miller, Spring

1-Session Events

Food Bank Charity Pairs - 9.0 Tables AB1. Phyllis Pruet - Jason Kiker, Corpus Christi A2. Marilyn German - Martha De Cou, Corpus Christi A3. Stephen Bruce, Austin ; George Pisk, Manchaca B2. Ann Crumpler, Corpus Christi ; Karur Krishnan, Houston B3C1. Margaret Crumpler - Mahesh U R Maruvada, Corpus Christi C2. Linda

CORPUS CHRISTI REGIONAL WINNERS



Food Bank Charity Pairs C
Mahesh Maruvada - Margaret Crumpler



Wed Open Pairs B
Eric Wolf - Hank Eng



Fri/Sat KO Bkt 1
Shawn Quinn, Carolyne Fox, Ellen Hessel
Joe Quinn, Gary King, Ira Hessel



Fri/Sat KO Bkt 2
Jo Neesvig - Susan Spencer
Charles Lawson - Ronald Francey



Patsy Sole KO Bkt 3
Brian & Janet Gelles
Nancy Starks - Joanna Overbaugh



Fri/Sat KO Bkt 3
Terri O'Brien, Lucerne Bunch
Patricia Berry, Esther Ellis



Sat Compact KO Bkt 1
Becky Ellisor - Eddie Wold
Bob Morris - Milton Ellisor



Ann Crumpler Open Pairs C
Sandra & Michael Harris



Patsy Sole KO Bkt 1
Carolyne Fox - Ellen Hessel
Gary King - Ira Hessel



Sat Eve Swiss A & B
Bob Steidel - (NP) Gool Castleberry
Arline Rubin - Kathy Sinkin-Amor



Sat Open Pairs A Tie
Marion Gebhardt - Roy Baughman
Jim Thurtell - Jim Bauer

Jones - Leonidas Jones, Kerrville
Wednesday Aft Side Game - 6.5
 Tables A1. Rick Elliott, Houston ;
 Michael Huston, Joplin BC1.
 Laurene Jacob - Patricia Webb, Aus-
 tin
Thursday Morn Fast Pairs - 12.5
 Tables AB1. Anne Knott - Patsy
 Howell, Houston A2. Marilyn Mac
 Donald - Bill Mac Donald, Corpus
 Christi A3. Nancy Stanton,
 Frisco ; Lynne Wood, Richardson
 B2. Paula Warren, New Braunfels ;
 Rebecca Brown, San Antonio B3.
 Charles Loeffler, Junction ; Eugene
 Lux, Fredericksburg C1. Rosemary
 Stielow, Austin ; Linda Banks, San
 Marcos C2. Brian Gelles - Janet
 Gelles, Fairview C3. Vicki Dailey,
 Houston ; H Patricia Leavitt,
 Friendswood
Thurs Aft Elroy Side Pair - 11.5
 Tables A1. Michael Huston, Joplin
 MO; Rick Elliott, Houston A2.
 Marilyn Mac Donald - Bill Mac
 Donald, Corpus Christi A3B1.

David Ticen - Robert Coffey, Victo-
 ria B2. Stephen Hoffman - Judith
 Hoffman, San Antonio B3C1. Clara
 Brinson, Asheville NC; John Hilbig,
 Bulverde C2. Marie Woods,
 Donna ; Neil Lorenz, Alamo C3.
 Tim Halligan - Michele Halligan,
 Houston
Wednesday Eve Open Pairs - 14.0
 Tables A1. Erez Hendelman, New
 York NY; Shirley Matthews, Lindale
 A2C1. Hank Eng, San Antonio ;
 Eric Wolff, La Mesa CA A3B2.
 Ronald Francey, Corpus Christi ;
 Charles Lawson, Huntsville B3.
 Jane Clipson - James Clipson Jr,
 Eagle Lake C1. Ann Gibbs - Mary
 Jennings, Houston C2. Martha Nor-
 man - Anita Albert, Austin C3.
 Betty Mengle - Karen Leber, Corpus
 Christi
Wednesday Eve Side Pairs - 6.5
 Tables A1. Dee Baker - Anyemarie
 Weaver, San Antonio A2/3 Mi-
 chael Huston, Joplin MO; Rick Elli-
 ott A2/3BC1. Linda Banks, San Mar-

cos ; Rosemary Stielow, Austin
 BC2. Sharon Gassman, Burnet ; Janis
 Koenig, Kingsland
Wednesday Evening Swiss - 12
 Tables A1 Roy Baughman,
 Pantego ; Marion Gebhardt, Richard-
 son ; James Bauer - James Thurtell,
 Dallas B1. Joyce Wormser - Sandra
 Pollard, Pearland ; Judith Ensor -
 Charles Ensor, Seabrook C1. Cheryl
 Clark - William Olds - Sharon Tom-
 nitz - Nancy Latner, Dallas
Sat Morn Side Pairs - 13.0 Tables
 1. Margaret Crumpler, Corpus
 Christi ; Madhusudan Patel, Houston
 A2B1. Susan Ohm, San Antonio ; K
 Voges, Converse B2C1. Zach Garris-
 on - Kristy Garrison, Spring C2.
 Carolyn Schafer, Fair Oaks Ranch ;
 Cynthia Schwarz, Pipe Creek
Friday Morn Fast Pairs - 21.5 Ta-
 bles ABC1. Brian Gelles - Janet
 Gelles, Fairview AB2. Hugh Miller
 - Catherine Miller, Spring C2.
 Sharon Gassman, Burnet ; Janis
 Koenig, Kingsland

Wed Morn Fast Pairs - 9.0 Tables
 A1. Shirley Matthews, Lindale ;
 Erez Hendelman, New York NY
 A2BC1. Brian Gelles - Janet Gelles,
 Fairview BC2. Thomas Turnipseed,
 Jackson MS; Dale White, Houston
Henry Messer Fast Pairs - 31.50
 Tables / Based on 17 Tables 1/2
 Janet Gelles, Fairview 1/2 Brian
 Gelles, Fairview 1/4 Lynne Wood,
 Richardson 3/4 Nancy Stanton,
 Frisco
Thursday Eve Swiss Teams - 17
 Tables AB1. Susan McLaurin - Janet
 Williams - Karen Hearn - Susan
 Theiss, Houston A2. Catherine
 Miller - Hugh Miller, Spring ; Mi-
 chael Bossert - Sara Bossert, Pfluger-
 ville B2. Sharon MacMorran -
 Kenneth MacMorran, Austin ; Owen
 Bunn - Patricia Bunn, Cypress C1.
 Clara Brinson, Asheville NC;
 Dolores Reiley, San Antonio ; Cyn-
 thia Schwarz, Pipe Creek ; Carolyn
 Schafer, Fair Oaks Ranch C2. John
 Manderscheid - Dale White - Jan

Guthrie, Houston ; Thomas Turnip-
 seed, Jackson MS 57.00
Fri Aft 299r Pairs - 5.0 Tables
 ABC1. Rebecca Landon - Margaret
 Kennedy, Corpus Christi A2. Susan
 Brown - Elizabeth Nystrom, Rock-
 port B2. Katherine Powers - Russel
 Powers, Rockport C2. Pat Ponton -
 Lynn Jackson, Corpus Christi
Saturday Eve Swiss Teams - 12
 Tables AB1. Arline Rubin - Kathy
 Sinkin-Amor - Bob Steidel - Gool
 Castleberry, San Antonio AB2. Rox-
 ana Tom, San Antonio ; Katherine
 Gary - Dorothy Rippstein, Karnes
 City ; Roxana Tom, Campbellton
 C1. David Ticen - Robert Coffey,
 Victoria ; Ann Blohm - Faye Baker,
 Houston
Eloy Barreda Side Series - 15.75
 Tables / Based on 7 Tables 1/2 Janis
 Koenig, Kingsland 1/2 Sharon
 Gassman, Burnet 3/4 Rick Elliott,
 Houston 3/4 Michael Huston, Joplin
 MO 5/6 Linda Banks, San Marcos
 5/6 Rosemary Stielow, Austin



Thurs Open Pairs A
 Ann Crumpler Open Pairs A
 Janet & Tom Clark



Thurs Open Pairs B, Sat Open X
 Julia Blancet - Linda Rensi



Martha DeCou Compact KO Bkt 2
 Carol Wilson - Patricia Bunn
 E Lilly - Owen Bunn



Patsy Sole KO Bkt 2
 Toni Hurlbut - Alberta Birk
 Charles Loeffler - Eugene Lux



Wed Eve Swiss B
 Joyce Wormser - Sandra Pollard
 Judith Ensor - Charles Ensor

More Corpus Christi Regional Pictures



Jack Mehrens AX Swiss
 David Pearlman - Phillip Duterme
 Ira Garrison - James Andre



Thurs Eve Swiss
 Susan McLaurin, Janet Williams
 Karen Hearn, Susan Theiss



Jack Mehrens Swiss B
 Marsha Shortt - Julia Blancet
 Linda Rensi - Mark Leighton



Wed Eve Swiss C
 Cheryl Clark - William Olds
 Sharon Tomnitz - Nancy Latner



Ann Crumpler Open B
 Marsha Shortt - Mark Leighton



Wed Open Pairs A
 Erez Hendelman - Shirley Matthews



Henry Messer Fast Pairs
 Brian & Janet Gelles



Gold Rush Pairs
 Zach Garrison - David Garrison



Sat Open Pairs AX
 Dee Schade - Phyllis Pruet



Food Bank Charity Pairs
 Jason Kiker - Phyllis Pruet



Wed Open Pairs C
 Ann Gibbs - Mary Jennings



Jack Mehrens BCD Swiss
 Julie Valentine - Steven Hollahan
 Martha Norman - Anita Albert



Roma & Stanley Marshall KO Bkt 2
 Thomas Martinsen - Marsha Shortt
 Linda Martinsen - Mark Leighton



Thurs-Fri KO Bkt 3
 Margaret Bennett - Robin Tucker
 Julie Valentine - Steven Hollahan



Morning KO Bkt 3
 Thu/Fri KO-Bracket 2-
 Shirley Shelton - Sherry Roberts
 Peggy Singer - Beth Hankins



Fri Eve Swiss Flt A
 Mary Pat Gentry, Carolyn Lanier,
 Becky Ellisor, Robert Morris,
 Eddie Wold, Milton Ellisor



Roma & Stanley Marshall KO Bkt 1
 Jack Mehrens Swiss A
 Carolyn Peters, Gary Cohler,
 Susan Key, Chris Compton,
 Tom Peters

**Unit 197
 Lubbock**

Sandi Krahrmer

Hi Everybody!

Hope you had a wonderful Thanks-
 giving and Christmas.

It's pretty bad when you can't win a
 Bridge game with a 71% game, isn't
 it? Well, it happened twice in one
 week--both on a Friday. Gary and
 Charlotte Blaiss had a 73 and a 74%
 game and did win. Carol Schoenhals
 and Robbie Butts had a 71% to come
 in second. Both sat NS. Then, the
 following Friday, Charlotte and Gary
 did it again with a 74% and Betsy
 Bloechl and I had a 71% to come in
 second. We also sat NS. That has got

to be some kind of a record. It is
 especially unusual that both pairs sat
 the same direction each Friday.

Mozella Tew has increased
 our education budget a good bit with
 all the lessons she gives. She has 19
 new students right now. She and
 Lexie Reese went to Houston about 8
 years ago to take the teaching course
 at their own expense. They then de-
 cided to give lessons and charge for
 them but take no money for them-
 selves. Moe did most of the teaching
 since Lexie's health was beginning to
 fail. She prepares all the lessons and
 boards and sees that food is served
 each Monday night. She has about
 19 students this go around and hopes
 that at least half of them will join
 ACBL. Please be kind when you see
 a new face who has come to play in

our regular games. Mozella has
 worked too hard for us to be rude to
 them. Thank her for all she has done.
 It takes several hours prep time each
 week to get ready for the lessons and
 several hours each Monday night. As
 our membership ages, we need new
 blood. We have 4 players over 90
 who play regularly and many in their
 late 80's. Several of our regular play-
 ers have cancer. Who knows how
 long these players will be able to
 continue playing? The only way that
 the Bridge Center will survive is to
 bring in new blood. Without people
 like Mozella Tew, where would we
 be?

Apologies to Charlotte Blaiss and
 Carol Schoenhals. They had a 70%
 game last month that I neglected to
 mention. Carol also had one with

Marc Levine, and Charlotte and Gary
 had 3--one being a 76% game. Also,
 June Stanton and Robbie Butts had
 one. Sammie Johnson had 2 70%ers--
 one with Karen Wilson and one with
 Helen Lauderdale. Congratulations to
 all the fine players.

Unit 197 is pleased to welcome Billie
 Mitchell to our Unit. Billie moved to
 Lubbock recently from Ruidoso.
 Besides being a fine player with over
 10,000 points, she is a fine lady. She
 will answer any questions we may
 have about play or bidding and is
 always gracious no matter how dumb
 our questions are. We are proud and
 happy to welcome her as one of our
 members.

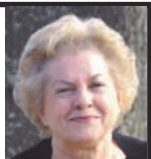
We would like to thank the following
 people for the great Christmas deco-

rations. Jan Hover and her helpers
 worked many hours to give us an
 attractive holiday atmosphere. Help-
 ing were Jane Doviak and her hus-
 band. Her son, Steven, put up the
 housing display over the coat rack.
 Walt Langendorf and Bruce Hook
 did some of the heavier work. Other
 helpers were Suzy Stiles, Liz Hinds,
 and Johnnie Sue Dayton. I can't re-
 member if Carolyn Cauthron was
 there or not, but she certainly has
 helped a lot in the past. Thank these
 people when you see them. Remember
 our February Sectional in the capable
 hands of Gary and Charlotte Blaiss.
 See the ad in this edition. Hope to
 see you there.

Have a Happy and Prosperous New
 Year.

Sandi Krahrmer

Unit 201
Sabine Neches



Patsy Pierce

We were saddened to learn of the death of **J. B. Persohn**. His friends will miss his smile and fun loving personality. Our condolences go out to his family and many friends. Our sympathy also goes out to the family and friends of **Norma White**. Norma, a long time resident of Beaumont and active bridge player will be missed by all of us.

Thanks to everyone who worked so hard, our Fall Tournament was a great success. The generosity and willingness of our players is surely appreciated and our visitors always give good comments on our hospitality. Beverly Leger turned in the highest score of the tournament and received the high point trophy. Congratulations, Beverly !!

Our **October Club Appreciation Series** was well attended. **Sunday** winners were Betty Poindexter and Edwina Landrum in Flight A and B with Tim Stelly and Robert Kacher taking 1st place in Flight C. **Monday Afternoon** winners were Ron Sanders and Patsy Pierce in Flight A and B with Don and Juinez Moss 1st in Flight C. **Monday Evening** winners in Flight A and B were Don and Janis Williams. **Tuesday** winners in Flight A were Jack Evans and Marilyn Adams.. Sylvia Street and Julia Hooper were 1st in Flight B and C. The **Wednesday Morning** game found Don and Janis Williams 1st in Flight A and B. Susan Mandel and Julia Hooper finished 1st in Flight C. **Wednesday Afternoon** winners in

Flight A were Flo Gillispie and Martha Sigler. Flight B was won by Mary Nix and Loretta Gary with Connor Smith and Jean Gonsoulin winning in Flight C. **Thursday's** game was won by John Smalley and Aiyannar Bharathi. First in Flight B were Martha Bookman and Janice Niederstadt with Connor Smith and Marilyn Adams winning in Flight C. On **Friday**, Nancy Smalley and Marian Jones placed 1st in Flight A. Mary Johnson and Mary Nix were 1st in B with Liz Mackenzie and Gertrude Cherry 1st in Flight C.

The **October Mentor Team** game was won by Martha Oliver, Anna Smith, Kris Cherry and Ruby Collins. Finishing in 2nd place was the team of Sylvia Street, Carol McGill, Julia Hooper and Robert McGill.

The **November Mentor Pairs** game was won by Sarah Smith and Connor Smith. Second place was taken by Marilyn Adams and Anna Smith with Gretchen Glass and Marian Jones in a tie with Carolyn Worsham and Juanel Jones for 3rd place.

Congratulations to our unit president, Sally Blewett. Sally has recently been appointed to represent District 16 on the ACBL National Goodwill Committee. She and the four other new members were honored with a reception at the NABC National Tournament in Seattle. Our unit is pleased to have a member representing us at the national level. Good job, Sally !!

Several of our members traveled to the **Rayburn Bridge Club** to join Betty Poindexter and the Rayburn club while enjoying their hospitality and beautiful facility, North/South

winners of this game were Anna and Hugh Smith. Cynthia Stueber and Blanche Sibley placed 2nd with Edwina Landrum and Marian Jones in 3rd. Marianna Carpenter and Jane Wood finished 1st in Flight B and C. East/West winners were Rachel Arnold and Betty Poindexter. Keith Dotson and Kris Cherry were 2nd in A and 1st in B and C. Billie Carter and John Koogler placed 3rd in A with Jeanie Wright and Hilda Mcleod placing 2nd in Flights B & C.

Party, Party Party ! As usual, Dr. Bharathi successfully promoted the India Association of Southeast Texas's annual India Fest. This year the guest speaker was Tipton Golias. That was just one of the events our members enjoyed as we continued with our party spirit. Marian Jones hosted a delightful Halloween Costume Party and invited all the bridge players. If you missed the party be sure to get a look at some of the costume pics. They are great! Not to be outdone, Mary Jane Garth hosted her annual Christmas Party for our members. The opportunity to enjoy Mary Jane's hospitality with her beautiful home as a back drop is always a special treat. Our bridge club continued the holiday festivities with a special day set aside at each session for our club Christmas Parties. We all enjoyed the holiday season and may be five pounds heavier but we will worry about that later.

Yes, we found another excuse to party. **Jim Landrum's Life Master Party** was one of the club's highlights. The Gumbo was out of this world and we loved getting to know his and Edwina's lovely family. The overall game winners were Cynthia Stueber and Don Holst. Miriam Cooper and Dave Becker were 2nd with Tim Stelly and Robert Kacher placing 3rd. Others placing in the overalls in Flight B were Mary Lou Terry and Barbara White in 2nd place. In Flight C Keith Dotson and Earl Johnson placed 2nd with Betty Kirwin and Norma Crane finishing 3rd. Our honoree and partner Edwina, finished in 5th place in Flight B. Congratulations, Jim !!

Looking back on 2011, I must say that Unit 201 has had a great year. We received an award for gaining the most members in our district. We have a great president, wonderful directors, excellent teachers, and many new members who are contributing to our success. Our bridge family is the best!!! Personally, I drive about 50 miles to a game and feel that it is well worth the drive to be with friends and enjoy a challenging game. See you at the game

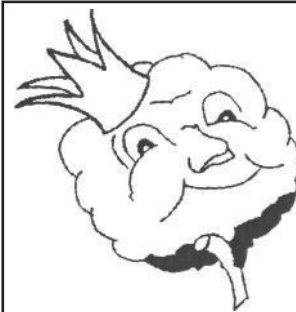
Unit 204
Fort Concho



Neal Perlman

Congrats to some San Angelo folks who were in the winners circle at the Abilene sectional in October. Fri pairs A+B Vicki Fisher and Judy Wilde; Sat aft 299er Mike and Jerre McAfee and Sunday Swiss A+B-Barbara Wright, Brenda Chapman, Linda Cole and Nancy Harris ; Sunday Swiss C-Dave and Marifrances Watson, Ann Bailey and Gloria Robertson.

Family and friends celebrated Life Master Linda Reichenau from Mason on 11/5/11 at Eden's City Limits Café. Her husband Charlie made sure there was plenty of chicken-fried steak and fixins. As usual, players also "celebrated" with cakes, cookies, chocolate bonbons, bread pudding with bourbon sauce, and cheese wafers. Overall winners from 9- tables were: A-Iris Warren-Patsy Rogers and B/C - Linda Reichenau-John Osborne.



KING COTTON SECTIONAL

February 24, 25 & 26, 2012
Bridge Center
2563 74th Street
Lubbock, TX 79423
[\(806\) 745-2817](tel:8067452817)

(Hotel Information Appears Below)

Friday

Stratified Open Pairs - 1 session 10:00 am
Stratified Open Pairs - 1 session 3:00 pm

Saturday

Stratified Open Pairs - 1 session 10:00 am
Stratified Open Pairs - 1 session 3:00 pm

Sunday

Rolls & Coffee 10:00 am
Stratified Swiss 10:30 am & TBA
(Meal Served Between Swiss Sessions)

This Sectional is Non-Smoking & Fragrance Free

Stratifications: A 2000+ B 500-2000 C 0-500

Tournament Chairman Partnership Chairman Rules & Ethics

Charlotte & Gary Blaiss Mary Ann Anthony Carol Schoenhals
[\(806\) 702-4252](tel:8067024252) [\(806\) 797-8965](tel:8067978965) [\(806\) 798-3663](tel:8067983663)
[\(901\) 289-2914](tel:9012892914) [\(806\) 543-7670](tel:8065437670)

PLEASE NOTE: All Stratifications for pairs and teams based on average masterpoints. The Bridge Center is a smoke-free and fragrance-free building. No perfume or scents permitted.

Hotel Information

Hotel rooms are available at the Ashmore Inn, 4019 South Loop 289, Lubbock, Texas 79423. Reservations: [\(800\) 785-0061](tel:8007850061) and the Residence Inn by Marriott, 2551 South Loop 289, Lubbock, Texas 79411. Make reservations through the Sales Department. Telephone: [\(806\) 745-1963](tel:8067451963). (Notes: The Residence Inn is about one mile closer to the Bridge Center than the Ashmore Inn. Rates may be lower with AARP or AAA discounts.)

New Life Master Toni Hurlbut of Mason/Menard "knocked out" her last points at the Corpus Christi regional playing with her buds Alberta Birk, Gene Lux and Charles Leffler. Congratulations!

Found a paper scrap recently in my kitchen drawer at the Sue Barber Bridge Center with an old saying from Bessie (when considering an action, "Do what your first mind tells you"). We've missed Bessie and her "southern" presence of grace and style.

Warren Alexander had a diverse, interesting life for 92 years and it was San Angelo's pleasure to have known him these last 4 years. Monday and Thursday evenings were his regular spots and he will definitely be missed.

Results for the 11/28/30 Charity Game: 1st C and 2nd B to Jud Gray and Wiley Bunton; 1st B and 2nd A-Dave and Marifrances Watson and 1st A to Kurt Fangmeier and Neal Perlman.

I have installed the ACBL Club Locator for mobile phones and it is quite handy for unknown places. In this vein, Unit 204 offers many choices and San Angelo clubs include Fort Concho Duplicate, San Angelo Bridge Club, Monday Duplicate Club, The Cactus, Shamrock DBC, Ruff Crowd and Wednesday Bridge Club. Holiday parties in all the various clubs are coming up. I wanted to repeat an appreciation and respect that the local folks have for our key people: regular directors - Mary Jane McCord and Sue Henry; president Ginny Noelke; manager Norma Walker; directors - Linda Cole, Ann Bailey, Joy Hardy and Joe Bailey; and the people who always pitch in - Brenda Chapman, Helen

Barker, Patsy Rogers, Vicki Fisher, Maxine Bunyard, Betty Horne, Pat Bitner and all the rest. Finally, thanks to all the players who challenge us to be better players.

I want to invite everyone to the San Angelo sectional the second weekend in February, so come on over Feb. 10th-12th and add to the fun. Happy New Year to all in District 16.

Unit 207
Austin



Joyce Cooper

Reporting from Austin, just in time to invite everyone to the Austin Winter Sectional, January 5-8, at the DoubleTree Hotel. Please note that both the Friday and Saturday evening games are now "Charity Pair Games," which means they cost an extra dollar, but the points awarded are weighted by 40%, as if they were Regional points. This tournament is always well run and we look forward to hosting the event. The partnership desk is being run by Martha Norman at normanj@austin.rr.com, or, she may be contacted at 512-263-5074.

Looking back: Since I joined the Board last spring, several people have asked me what I do on the Board and what happens. Basically I have had to reply that I just sit there and keep my mouth shut. It has been a learning experience, but I'm figuring it out! George Watkins, our President, is superbly capable and very well organized. When the Unit hosts a tournament, George takes care of lining up our directors and arranging for those meals between sessions that we have become known for. In short, we owe a huge thank you to George for all his hard work. He is managing our Unit with both



57th BEAUMONT SPINDLETOP SECTIONAL

Beaumont Bridge Studio
950 North Street, Beaumont, Texas

Host Hotel: Sleep Inn, 2030 N. 11th Street, Beaumont, Bridge rate \$70. Reserve by February 14. (409) 892-6700

Entry Fee 10/person/session. Swiss teams,\$88/team. \$2 additional per session for non-members and unpaid members

Thursday, February 23, 2012

Stratified Open Pairs (1 session).....9:30
Stratified Open Pairs (1 session).....1:30
299er Pairs (single sessions).....9:30, & 1:30

Friday, February 24, 2012

Stratified Open Pairs (1 session).....9:30
Stratified Open Pairs (1 session).....1:30
299er Pairs (single sessions).....9:30, & 1:30

Saturday, February 25, 2012

Stratified Open Pairs (1 session).....9:30
Stratified Open Pairs (1 session).....1:30
299er Pairs (single sessions).....9:30, & 1:30

Sunday, February 26, 2012

Stratified Swiss Teams. (strats. based on average)
10:30 a.m. & TBA

Stratified A (2000+) B (750-2000) C (0-750)
299er Pairs A (200-300) B (50-200) C (0-50)

All strats are based on average
Mugs for section tops

Tournament Chairs:

Norma Crane (409) 832-7280 ncrane@gt.rr.com
Liz Karnicki (409) 866-8936 lkarnicki@aol.com

Partnerships: E. W. Sweeney (409) 728-0821
dispatcherone@yahoo.com

Always free coffee and snacks, sandwiches between Sessions. Lunch served between Swiss team sessions.

good sense and good humor. Terri O'Brien is in charge of hospitality and for every Unit sponsored event, she is coordinating the snacks, drinks, desserts, along with set ups and clean ups. Add Robert Donovan, our Treasurer, who keeps up with every nickel we spend, and we have an efficient, well run organization. We have had one change to our Board: Susan Emerson resigned her position in October to move to Prescott, Arizona, with husband, Jeff Emmert. Her contributions were faithful, consistent, and considerate. She will be missed. Her position has been filled by the Board with Terry Richardson, the runner up in last year's elections. Welcome Terry!

It might be said that part of our Unit's success has come from the hard work and dedication that the Unit members provide. We lose money on a monthly on going basis, but make up for that loss with our tournaments. With the proceeds, we continue to host complimentary bridge sessions with food. Those events this year included the Annual Meeting, the City Championship, the visit of the ACBL president, and our annual Christmas Party. It is the Board's goal to maintain a healthy financial position while making improvements to the overall well being of bridge in Austin. Suggestions? We are open.

Classes and opportunities for the novice and newer player continue to expand. Sponsored by the Bridge Center of Austin, there are now two sessions of Bridge Plus with point limits of 50 MP, Fridays and Sundays. Your Board has been approached about hosting a Regional Non-Life Master Regional tournament. It is under consideration and input from area players would be appreciated.

Milestone: Louise Kennedy celebrated her 98th birthday in late October with special recognition at the Sr. Center's Monday game. Louise has been known as the source for a system known as the "Big Club" for which she has put together pages of interesting notes. This Big Club system pulls on 2/1 and Precision for its core and has been a formidable system to play against. Late Happy Birthday to Louise and thanks for all you have done to help promote good competitive bridge in Austin.

Milestones: New Life Masters: Gail Banet, Tom Banet, Linda Griffith, Nancy Pinkerton, Barbara Ververne, Diana Whitfield; **Emerald Life Master:** Rosemary Kelley (many congratulations Rosemary – so many of us owe you a special thanks for sharing your talents and knowledge all these years); **Gold Life Master:** Shirley Henry; **Silver Life Master:** Kyong Shuey, Darlene Gilmore; **Bronze Life Master:** Kathryn Levihn, Donna Livingston, Mark Sanders; **6000 points:** Tom Clark, Gary Powell; **3500:** Paul Tobias; **750:** Vivian Thompson; **200:** Liz Hinkle, Sunny Laird; **100:** Gloria Bennett, Margaret Bennett, Betty Ling, Nola Ray, Robin Tucker, Patricia Webb; **50:** Denise Groman, Ronald Mason.

Future Tournaments: Austin Winter Sectional: January 5-8 @ the Double Tree Hotel; **0-200 Sectional:** February 11 & 12 @ Bridge Center of Austin; **Bridge Center of Austin Sectional:** March 9-11 @ the Bridge Center. **And, put the Austin Regional, 2011, July 2-8, on your calendar: DoubleTree Hotel.**

Of note: The Grand National Teams (GNT) unit level qualifier for flights B and C will be held on January 28th. It is a two session event. The upper half of each flight qualifies to go to the district-level event over the Memorial Day weekend. The Unit pro-

vides a stipend for team members from our Unit who qualify for the ensuing National event.

A date to add: Our annual meeting will be **Saturday, February 18,** at 1:00 at the Bridge Center, followed by play at 1:30.

On behalf of Unit 207's Board: Here's wishing you a **Happy New Year** filled with lots of fun bridge and an accumulation of gold points. And good health and some wealth!

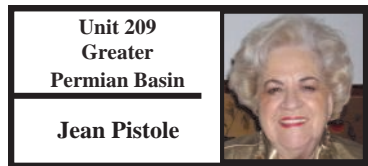
Austin Winter 199er

12/03 - 12/04/2011
41 players 27 tables.

- 1 3.80 Sanae Zaveloff
- 2 3.80 Judy Bagley
- 3 3.61 Robert Williams
- 4 3.61 Chuck Fatino
- 5 3.46 Rachell Jackson
- 6 3.46 Ann Bower,

Sat Aft 199er Intl Fund - 15.5 Tables AB.1 Rachell Jackson - Ann Bower AB2. Robin Tucker - Laurene Jacob C1. Annetta Hughson-Carol Peters C2. Irving Wallerstein - Joan Wallerstein

Sun Aft 199er Intl Fund - 11.5 Tables A1. Judy Bagley-Sanae Zaveloff A2BC1. Jay Leiserson - Joyce Leiserson B2. Robert Williams-Chuck Fatino C2. R. Gary Marquart - Bruce Mansbridge



Unit 209
Greater
Permian Basin
Jean Pistole

October was filled with Junior Fund and Club Appreciation games. All our players are really more "charged up" when we have our upgraded games and those needing points are pleased.

We had a few who attended the Abilene Sectional. Alan Copeland joined Jo Smith and their team was successful in the knock-outs. Halloween brought out the "spooks and witches." The Thursday night invitational game had a party on the 27th and along with lots of good food, costumes were worn by several. It always makes a great party when everyone joins in the fun.

Belle Harris was elected President of the Midland club and we wish her a great year in her new role.

The Midland Country Club group had a special Halloween party and served "witches brew" and snacks. They always put on a nice party.

On October 31 the Monday night Midland game also had a "Halloween Bash." Hot dogs, dips and desserts were served to those attending.

We moved easily into November and a Unit Club meeting was held on November 6. The election of officers was held with Sarana Savage elected President and Brenda Leonard Vice President. Martha Poss turned the gavel over to the new president. Martha has been a great and faithful president and our thanks go to her for her "job well done." Lunch was served to representatives from Midland, Odessa and Big Spring. A great game followed.

November 9 the Wednesday night club honored our new Life Master, Linda Aaron. Decorations and food were in abundance. Rhonda Bryant, Linda's daughter from Houston came to the festivities to help her mother celebrate. A beautiful cake with Linda's picture adorned the dessert table. With 10 tables in play, the following were winners: NS -1st in A,B,C were Phyllis Laird & Barbara Miles, 2nd in A - Jim Hawkins & Frances Levin, 3rd - Lena Nichols & Gloria Crites, NS 2nd in B - Joyce Ball & Phyllis White. EW winners were: A - 1st Ann Servatius & Flo Curry, 2nd - Bob & Roberta Bacon. 1st in B&C, 3rd in A- Jerry Burchell & Leilani Matthews, 2nd B Paulette

Turner and Marlene Blumentritt. Monday, November 28 the ACBL Wide Charity game was held and winners were: 1st in A - Flo Curry & Marlene Blumentritt, 2nd in A, 1st in B - Helen South & Jerry Burchell, 2nd in B, 1st in C - Brenda Leonard & Patti Witt.

On November 11 we were shocked and saddened by the unexpected death of Jimmie Penn. Jimmie had been a member of the Midland group for over 40 years. She was a retired school teacher from the Midland schools. Jimmie was an excellent bridge player; a Gold Life Master, and was honored with the Texas Star Award. She had served the Midland club in many capacities. Jimmie took great pride in updating the bulletin board, making the picture posters and decorating for all occasions. She had been Club Manager for several years and was responsible for purchasing supplies for the Building. She will be a missing icon in our group.

We have many who are under the weather "so to speak" and we continue to pray for their recovery and hope to get them "back in the game" very soon.

Now comes December which is always a busy party month so we are looking forward to lots of good bridge games! Until the New Year!

Jean



Unit 224
Fort Phantom
Vance McCracken

Peggy Ford is known for her charming personality and her competence at the bridge table. A long-time player, she recently achieved the status of Gold Life Master, which requires 2,500 masterpoints. The entire unit is proud of Peggy and applauds her as she charges onward toward her Diamond Life Master designation.

The Abilene Harvest Sectional in October was a huge success. Over 125 players came from two dozen Texas cities and from New Mexico and California. Robert Patton chaired and organized the three-day event. The ever-present array of snacks and meals was superlative, and the direction of Tom Marsh, our favorite ACBL tournament director,



SAN ANGELO TEXAS INDEPENDENCE SECTIONAL

February 10-12, 2012
SUEZ SHRINE CENTER 2915 LOOP 306
San Angelo, Texas

Friday, February 10, 2012

Stratified Pairs Single Session 1:00 pm & 7:00 pm
0-300 Pairs (3 tables minimum) 1:00 pm & 7:00 pm

Saturday, February 11, 2012

Bracketed KO Teams*,II,III 9am & 1:pm & 7:pm
Stratified Pairs Single Session 9:am & 1:pm & 7pm
0-300 Pairs (3 tables minimum) 1:00 pm & 7:00 pm
* KO may be handicapped per director's discretion

Sunday, February 12, 2012

Stratified Swiss 10:00 am & TBA
STRATS: A (2000+) B (750 - 2000) C (0-750)
All Strats determined by average master points
Non-smoking with breaks **Director: Tom Marsh**

<p>TOURNAMENT CHAIR Norma Walker - 325.949.3354 (email:jaw1031@aol.com)</p>	<p><i>Lunch between sessions on Sunday Free coffee, iced tea & refreshments</i></p>
<p>PARTNERSHIPS Linda Cole - 325.949.1321 email:imgcole@suddenlink.net Betty Horne - 325.949.3837 email:paulbetty@suddenlink.net</p>	<p>Entry Fee \$10/ Session SWISS \$88.per Team \$1 additional per session for non and unpaid ACBL members</p>

HOTEL INFORMATION

Best Western 3017 W. Loop 306 325.223-1273 \$70.00 Ask for bridge rate Free Breakfast	LaQuinta 2307 W. Loop 306 1.866.527.1498 \$67.50 (1-2 people) \$76.50 (3-4 people) Ask for bridge rate by January 20 - Group Code 0672-GRJSOD Free Breakfast	Rodeway Inn 2502 W. Loop 306 325.944.2578 \$65.00 Free Breakfast
---	---	---

was as smooth as ever. The top masterpoint winners were:

- Jo Smith, Abilene
- Alan Copeland, Midland
- Marc Levine, Lubbock
- Clement Jackson, Albuquerque
- Carol Whitten, Abilene
- Glynda Groves, Abilene
- Linda Spangler, Fort Worth

- Carol Schoenhals, Lubbock
- Jimmy Reynolds, Arlington
- Gerry McKim, Garland
- Bonnie Cartledge, Breckenridge
- Beverly Walker, Abilene

It was a cold and snowy evening for a warm and homey Life Master party in honor of Glynda Groves. Only a glowing fire in a fireplace was miss-

Austin Spring Sectional

Bridge Center of Austin 6700 Middle Fiskville Rd

March 8-11, 2012

Thursday-March 8...Friday-March 9...Saturday-March 10

Bracketed KO's...	10 am, 2 pm, 7 pm
Stratified Open Pairs, single sessions...	10 am, 2 pm, 7 pm
Stratified 199er Pairs, single sessions...	10 am, 2 pm, 7 pm

Sunday-March 11

Stratiflighted Swiss Teams... 10 am & TBA

Stratifications (strats for all events based on average masterpoints of pair)

Open Pairs: A: 2000+, B: 750-2000, C: 0-750

199er Pairs: A: 100-200, B: 50-100, C: 0-50

Swiss Teams: A: 3000+, X: 0-3000, B: 500-1500, C: 300-500, D: 0-300

Swiss Teams: Director will have the discretion to adjust the A/X masterpoint break if necessary.

Lunch Served Between Sessions Thursday-Saturday for Two Session Players.

Meal Served Between Morning and Afternoon Session on Sunday.

General Convention Card Only Except Midchart for A/X Swiss Teams

Entry Fees \$11/session (\$12 non & unpaid members); \$88/Swiss Team

Chairpersons...Jan & Tom Clark...512-428-6390...tcjmc@austin.rr.com

Partnerships (Novice & Open)...Sandy Potts...512-658-9795...sandy.potts@sbcglobal.net


Hotels-Reserve by March 1 (both hotels) for bridge rate

Baymont Inn 7400 N. IH-35, Austin TX 78752 512-206-3015 \$53 w/continental breakfast	Midtown Holiday Inn 6000 Middle Fiskville Rd, Austin TX 78752 512-452-9401 \$79 <small>Use code "BCA" when reserving at the Holiday Inn</small>
--	--

ing. The 9 1/2 tables of players were treated to excellent barbeque supplied by Don Dwyer and to a potluck of beans, potato salad, rolls and other side dishes. There were more desserts than could possibly be eaten. Martha Murphy lauded Glynda in poetry, and Coyita Bowker presented her with her Life Master pin. The section winners were Warren Haney and Ann Spittler, and Larry Robertson and Dessa Laird. As a relatively new player, Glynda is on a fast track to fame and glory in the world of bridge, and this event was the kick-off.

There were some big games in the unit recently: Martha Murphy and Carol Whitten - 72% on November 22; Lera Lewis and Ed Grant - 71% on November 10; Bette Byrd and Gwen Riggs - 70% on October 18; and Pat McGee and Raye Morris - 76% on September 19. Congratulations on some enviable scores!

Unit 225
East Texas



Shirley Shelton

Unit 225 held its annual Christmas Party on December 10 in Tyler and 26 tables of players turned out for the event. Awards were presented to new Life Masters for 2011:

Flo Eckeberger (Bronze also)
Jack Brown
Bonnie Gorman
Janie Wolaver
Barbara Williams (Bronze also)
Edna Wilder (Bronze also)

Rachel Lee (Bronze also)

Bronze Life Masters for 2011:
Synphia Adams
Carol Sossamon
Sherry Roberts
Karen Owen
Noelene Hardy

Silver Life Masters for 2011:
Jimmy Wright
Sandy Molander
Diane Estep
Nancy Green

Steve Lawrence was honored at the Christmas Party for his longtime years of service to our unit with a Lifetime Achievement award. Steve is a Grand Life Master and much more!!

We are sad to report the death of Lela Mae Corley, who was an Athens resident. She was director for many years of a Friday game at the Athens Country Club and also was director for the Van Zandt County DBC. She will be greatly missed! We also lost another longtime member from Athens Gerry McGuffy, she will also be greatly missed.

On a happier note: A Life Master Party was held in Longview honoring Janie Wolaver.

The event, held on December 7, was a record turnout for a club game in Longview as there were 22 tables in attendance. Players from all over Unit 225 attended, including Longview, Tyler, Canton, Athens, and Cedar Creek Lake club players.

The theme for the event, "It's a Jungle Out There" was carried out with decorations as well as with a poem detailing Janie's bridge career, penned by Longview director Mike Graham.

The event was coordinated by Graham as well as Longview DBC members Shirley Shelton, Edwyna Testerman, Diane Squyres, and Ginny Jones.

An overwhelmed Mrs. Wolaver received an ACBL Life Master gold medallion, a pearl necklace and

LONGVIEW

PINEY WOODS SECTIONAL TOURNAMENT

MARCH 1, 2, & 3, 2012

HOLIDAY INN EXPRESS -NORTH LONGVIEW

300 Tuttle Circle (just off Loop 281 near Longview Mall) Longview, Texas 75605 903-663-6464

Thursday-March 1, 2012

Bracketed Knockouts Teams I, 3 Sessions: 9 AM, 1:30 & 7 PM
Stratified 299er Pairs (single sessions) 9 AM, 1:30 & 7 PM
Stratified Open Pairs (single sessions) 9 AM, 1:30 & 7 PM

Friday-March 2, 2012

Bracketed Knockouts Teams II, 3 Sessions: 9 AM, 1:30 & 7 PM
Stratified 299er Pairs (single sessions) 9 AM, 1:30 & 7 PM
Stratified Open Pairs (single sessions) 9 AM, 1:30 & 7 PM
Stratifications (Based on average masterpoints of pair or team)
KO's may be handicapped Open Pairs: A:2000+, B:750-2000
C: 0-750 299er Pairs: A:200-300, B:100-200, C:0-100

Saturday-March 3, 2012

Swiss Teams - 2 Sessions 10:00 AM & TBA
Stratifications (Based on average masterpoints of team)
A:2000+, X:0-2000 (play together)
B:500-1250, C:0-500 (play together)

Tournament Chairpersons
Mike Graham 903-918-8642 babalooloop@yahoo.com
Shirley Shelton 903-245-9573 shirleyshelton@live.com

Partnership Chairpersons **Hospitality Chairpersons**
Nelda Avent 903-530-8522 Diane Squyres 903-291-0268
nelda3064@suddenlink.net Ginny Jones 903-758-3176
Dorothy McCasland 903-856-5741

Awards Chairpersons **Registration Chairpersons**
Pat Jeffrey 903-632-5220 Peggy Singer 903-753-5952
Edwyna Testerman 903-759-9148 Beth Hankins 903-663-9518

Refreshments Compliments of Longview Duplicate Bridge Club Members Saturday Lunch Provided for Teams-Jason's Deli
Entry Fees: \$12.00/ACBL - Saturday Swiss Teams \$108.00
\$2.00 additional per session for non & unpaid ACBL members

Host Hotel -Bridge Rate \$85.00	Additional Hotel-Bridge Rate \$85.00
Holiday Inn Express-North Longview 300 Tuttle Circle Longview, TX 75605 903-663-6464 (complimentary breakfast)	Candlewood Suites 2904 Tuttle Circle Longview, TX 75605 903-663-9751 (pet friendly)

Cut off date for bridge rate is February 16, 2012

bracelet, and engraved plaque from the club members. She told the crowd that this was a special day for her as not was she being honored for making Life Master, but December 7 would have been her mother's 80th birthday. Janie lost her mom to pancreatic cancer earlier this year.

Unit Game Results:

November Open Game
1st Betty Wilkinson & Gloria Rowland
2nd Kenneth & Pat Jeffery
3rd Nancy Green & Synphia Adams

Non-LM Game:
1st Beryl Cobb & Sally McAnulty
2nd Ginny Jones & Diane Squyres
3rd Diane Duncan & Billie Spain

December Open Game:
1st Bonnie Magee & Chester Neal
2nd Don & Mary Bartley
3rd (tie) Jackie Kimberly & Vermell-Boucher
Sandy Campbell & Jimmy Wright

Non-LM Game:
1st Ginny Jones & Diane Squyres
2nd Marion Davis & Mary Williams
3rd Sarah Hillyer & Colleen O' Neal

70% Club:


JoAnn Parten & Bonnie Burch-74.3% Van Zandt DBC

Gloria & Jim Streiffel- 70.8% Dottie Pirkle DBC

Mark Your Calendars!
The Longview Piney Woods Sectional will be held on March 1,2, and 3 at the Holiday Inn Express North.

Mike Graham & Shirley Shelton are co-chairs and Su Doe is Director-in-Charge. The ad for the tournament appears in this issue of the Scorecard.

Unit 233
Central Texas



Helen Levy

At our Unit Christmas party and election Dec. 4, Juanita Butler was elected president of the board of directors; Edna Tuerck, vice president; and Helen Levy, secretary-treasurer. James Goodwin, Harry Kenny, and Edna Tuerck were elected for three-year terms on the board. Special thanks to Ila Bates for serving as president the past year and to Dorothy Dvorsky, Susan Lambert, and Lennie Wilkins whose terms expired. A wonderful catered lunch was arranged by Lennie Wilkins and Juanita Butler, Malissa Baugh provided seasonal decorations, and Eiko King did a masterful job of managing the entry fees.

A big "thank you" to these ladies and to those who brought snacks for making our day so enjoyable.

Thanks to director Gene Thompson who ran two well-organized Unit championship games. Morning game winners were:

A1, Melody Euler and Mike Bukala; B1, Richard Cunningham and Jan Hart; C1, Mary Levy and Beulah Jones. Afternoon game winners were: A1, Tom Corlett and Ethel Corlett; B1,C1, Tom Banet

and Gail Banet.

Joan Cation has announced the Wednesday night game at Stillwell BC will be an open game beginning in Jan. 2012, and the Thursday evening game at the J&C club has been discontinued. Gene Thompson has also discontinued the Saturday afternoon game at the Bridge Studio of Temple.

Congratulations to 70% game achievers: **Oct. 17, Monday Slammers**, Cathy Valentine and Sharon Clark 74.36%; **Oct. 31**, Marcie Ives and Ron Ives 73.89%; **Oct. 28, Sul Ross BC**, Walter Winters and Thomas Davis 74.07%. **Nov. 8, Bridge Studio of Temple**, Gene Thompson and Margaret Barrell 70%; **Nov. 16, Stillwell BC**, Barbara Kirstein and Pat Kelly 72.32%; **Nov. 17, J&C BC**, Marci Ives and Ron Ives 70.83%; **12/4, Unit Christmas party afternoon Unit championship**, Tom Corlett and Ethel Corlett 71.01%. Well done.

Welcome new member Terry Stringer, Waco. We are sorry to lose Geneva Berg and Robert Ellison who have transferred to Unit 207.

We are saddened by the death of Sheri Owens on Oct. 24. Our condolences to Belva and Tillman Barrington in the death of their son Ray on Nov. 1. Our prayers for recovery are extended to our members who are suffering from illnesses and accidents.


Upcoming events: Unit GNT qualifying game Jan 22 at the Temple CAC, 2-sessions, sign up with Helen Levy if you plan to attend; Heart of Texas Sectional Tournament Feb. 24-26 at the Temple CAC; Bridge on the Brazos Sectional

Tournament Aug. 10-12 at the Holi-

day Inn and Suites, NW, Waco. Don't forget the memtor games on the 5th Mon., Wed., or Fri. at the Temple CAC.

Happy New Year

Unit 237
Magic Valley



Johnny Johnson

This last quarter was a busy one for our group. Our Sectional tournament was held in McAllen and was well attended. Jackie Burroughs and her crew of helpers did a wonderful job of providing hospitality, food, drinks and fun. The theme of the event was a Christmas Party. Jane and Jim Gormong honored Dotie Waters with a poem and a chair of honor with her name, Gold Life Master and many pictures of her. It was positioned at a table to kibitz the game.

Friday morning overall winners :
A Flight Mary Tryer, Kingsville,TX;Johnny Johnson, Harlingen, TX

B Flight Patricia Wilker, Mission,TX; Doreen Olson, Winnipeg,MB


C Flight Herman Westbrook,McAllen,TX; Matt Kennedy,McAllen,TX

Friday afternoon overall winners:
A Flight Dave Swartout, SanAntonio,TX; Donna Swarthout, SanAntonio,TX

B Flight Patricia Crough, Weslaco,TX Ian vignale, Cambellford, ON

C Flight Lyle Poole, Winnipeg,MB; Ellen Poole, Winnipeg,MB

Saturday Open Pairs Two Session



Temple Sectional

February 24-26, 2012

Cultural Activities Center
3011 North 3rd Street, Temple TX
Exit 303B Driving North on IH35 Driving South on IH35 Exit 304 turn left Across bridge, then right on 3rd street (Frontage Rd). 254-773-9926

Friday, February 24
Bracketed KO teams* (three sessions) 9 a.m., 1:30 p.m., 7 p.m.
Stratified pairs (single sessions) 1:30 p.m. & 7 p.m.
**KO may be handicapped per director's discretion (MPS for pairs and teams are averaged)*

Saturday, February 25
Bracketed KO teams* (three sessions) 9 a.m., 1:30 p.m., 7 p.m.
Stratified pairs (single sessions) 1:30 p.m. & 7 p.m.

Sunday, February 26
Lennie Wilkins Stratiflighted Swiss Teams 10 a.m. & TBA
Meal provided between sessions *Swiss format may be changed by agreement of Tournament Chair and Director In Charge

Tournament Chair
Melody Euler 254.718.2270
melodious@hotmail.com

Tournament Hotel	Partnerships
Quality Inn Temple 254.770.1100	Caroline Baumann
1610 West Nugent Dr.	512.864.9466
2 queens \$69.95 1 king \$64.95	cfbnn@suddenlink.net

Entry Fees ACBL Members \$ 11.00/Session Non-Members \$12.00/Session
Students-\$6.00 entry Swiss Team \$94.00/Team

Stratifications

Swiss: A/AX To be Determined by DIC (Play together)
B: 750-2000 C: 100-750 D: 0-100 (Play together)

Pairs: A: 2000+ B: 750-2000 C: 0-750

FREE COFFEE & SNACKS SMOKING BREAKS



McAllen Sectional



March 2nd - 4th, 2012

Las Palmas Community Center (956) 681-3350
1921 North 25th & Sycamore McAllen, TX 78501

Friday March 2

Stratified Open Pairs (Single Sessions) 9:30am & 1:30pm
\$10.00 player per session

Saturday March 3

Stratified Open Pairs 9:30am & 1:30pm
Single Session Available
\$10.00 player per session

Sunday March 4

Stratified Swiss Teams (2 sessions)
9:30am & TBA
\$80.00 per team

COME JOIN US & HAVE FUN IN THE VALLEY Stratifications

A 2000+ B 500-2000 C 0-500

Complimentary Lunch Daily (Beverages and Snacks available during sessions)

\$1.00 additional charge per session for non-ACBL players and unpaid members

Suggested Hotel

SpringHill by Marriott
(968) 263-3656 1-800-228-9290

Tournament Chair
Pat Wilker
(313)-433-7239

Partnership Chair
Gretchen Chapa
(956)- 682-0460

winners:

A & B Flight Tommy Latham, White House, TN; Clyde Tarbutton, Port Isabel, TX

C Flight Herman Westbrook, McAllen, TX; Matt Kennedy, McAllen, TX

Swarthout-Donna Swarthout, San Antonio, TX; Marilyn German, Corpus Christi, TX

B Flight Walter Lauckner-Rene Wallace, McAllen, TX; Patricia Crough, Weslaco, TX; Ian Vignale, Campbellford, ON

C Flight Charlotte Lunsford-Patricia Skelton, Mission, TX; Gretchen Chapa, McAllen, TX; Charis

Sunday Swiss Team Game

A Flight Marilyn Arnold-Dave

Linklater, Pharr, TX

The Harlingen Bridge Club had a Christmas party and honored Penny Tesla for all her work for the club for many years. Norma Tarbet read a poem she wrote especially for the occasion. And then there was another party at the Unit game for a Christmas Celebration. A team game with pot luck and there thirteen teams in play. The winning team was Ilse Drawe, Martha Hensel, Helen and George Van Amburg; 2nd Bud Inholfe, Darleen Thomasson, Jim and Jane Gormong 3rd Richard Lowry, Dianne Thise, Paula Huber, and Neta Van Bebber. It was especially nice to see Barbara Cooper joining us for lunch. Barbara says she has reached the time in her life to retire from the tables. We will all miss her smile and friendship. Hope to see her pop in from time to time to just say hi.

We have a new president in the Harlingen Bridge Club. Penny Tesla resigned after many years of hard work and Helen VanAmbur was elected to the position. Helen and George had only been back in Harlingen a few days and we put both of them to work. They will be directing all the games for most of the winter giving the local directors a few months off. Besides Helen being President and both George and Helen directing, they are co-chairs for the Harlingen Sectional tournament coming up on January 20-22. A special thanks for all your gifts.

Until next time. Hope to see all of you at the Harlingen Sectional, January 20-22, 2012.

Magic Valley

McAllen
December 9-11, 2011
93 players 113 tables.

- 1 15.34 Marilyn German
- 2 15.34 Marilyn Arnold
- 3 14.74 Donna Swarthout
- 4 14.74 Dave Swarthout
- 5 11.54 Ian Vignale
- 6 11.26 Chuey Lum
- 7 10.59 Tommy Latham
- 8 10.59 Clyde Tarbutton
- 9 9.99 Mary Tryer
- 10 9.99 John Johnson

Friday Morning Pairs - 21.0 Tables

A1. Mary Tryer- John Johnson

A2BC1. Patricia Wilker-Doreen Olson BC2. Herman Westbrook - Maty Kennedy

Friday Afternoon Pairs - 19.5 Tables A1. Dave Swarthout - Donna Swarthout A2. Robert Neeley-Chuey Lum B1. Patricia Crough-Vignale B2. Tommy Latham-Clyde Tarbutton C1. Lyle Poole - Ellen Poole C2. Neil Lorenz, Alamo; Don Long

Saturday Open Pairs - 18.0 Tables / Based on 15 Tables AB1.

Tommy Latham-Clyde Tarbutton A2. Marilyn German-Marilyn Arnold B2. Ernest Olson- Donna McLaren C1. Donald Hixson - Virginia Hixson C2. Paul Johnston-David Ticen,

Sunday Swiss Teams - 18 Tables A1. Marilyn Arnold - Dave Swarthout - Donna Swarthout-Marilyn German A2B1. Walter Lauckner - Rene Wallace-Patricia Crough-Ian Vignale B2. William Lemen - Fred Steger, Jr - Jackie Burroughs-Shirley Saulsbury C1. Charlotte Lunsford - Patricia Skelton -Gretchen Chapa-Charis Linklater C2. Bob Derber-Marcelle Jean-Jacqueline Bordeleau - Richard Fait

Unit 353
Wichita Falls

Pat Robinson



The holiday season is here again and Unit 353 received a special Thanksgiving blessing with the opening of the new Bridge Center combining the two clubs in Wichita Falls into one club and providing a new bridge home for all our games. We are located at 4701 Southwest Parkway, Suite 16 and our official name is The Bridge Center, phone number 940 264-3015. Our first game was the unit game on November 20, 2011.

Many people made significant contributions to getting this center off to a good start and thanks go out to all unit members for their enthusiasm and support. We want to say a special thank you to the following people: Kathleen Brown who donated tables, chairs and numerous items from the Bridge-A-Gap Club; Tommie Johnson who donated a refrigerator, stove, dishwasher and microwave to the center; David Hertzog who donated his time and expertise

in installing cabinets and appliances as well as adding many finishing touches which make our Center an attractive and pleasant place to meet; an anonymous donation for \$1,000.00 to help with renovations; Helen Cash who worked diligently with our President, Lois Roberson in negotiating the building lease and serving as co-chair-person with Tuck Harvey over decor for the center; and last, but not least, to all the board members who worked tirelessly together in making plans and decisions as well as physically participating in and overseeing renovations to make our Bridge Center become a reality.

We are now looking forward to the Christmas Holidays and plan to hold our annual Christmas Party on December 9th at the Bridge Center. Dinner will be catered by Georgann's Tea Room at a cost of \$10.00 for the evening.

We wish a speedy recovery to Carolyn Kay who is currently in the hospital. Our special thoughts and prayers are with Elgy Smith who recently lost her husband.

Congratulations to the following unit game winners: September winners were Joan Paradeis, Khalifa Ahmed, Shirley Bond and Wanda Hughes. There was no Unit game held in October.

High percentage games in September were Tommie Johnson and Margaret Kirkland at Bridge Club; Anne Halsell and Susan Couch at Vernon Duplicate; Patty Hofer and Faye Morrison at Bridge-A-Gap. High percentage games in October were Mike Terry and Susan Brower at Bridge Club, Anne Halsell and Susan Couch at Vernon Duplicate, Bernie Lange and Cula Burch at Bridge -A-Gap.

Master point leaders in September were Lois Roberson at Bridge Club, Susan Couch at Vernon Duplicate and Jolene Brantley at Bridge-A-Gap. Master point leaders in November were Leon Vacarella at Bridge Club, Susan Couch at Vernon Duplicate and Kathleen Brown at Bridge-A-Gap.

MAGIC VALLEY SECTIONAL CHAMPS



Fri Morn Pairs A
John Johnson - Mary Tryer



Fri Aft Pairs A
Donna & Dave Swarthout



Sat Open Pairs A
Tommy Latham - Clyde Tarbutton



Sun Swiss Team A
Marilyn German - Marilyn Arnold
Donna & Dave Swarthout



Sun Swiss Team C
Gretchen Chapa - Patricia Skelton
Charis Linklater - Charlotte Lunsford



Sun Swiss Team B
Ian Vignale - Walt Lauckner
Pat Crough - Rene Wallace

Cont. from page 2 Newcomers

In this issue, I'd like to introduce you to Laura Delfeld. She is responsible for the tremendous growth of bridge in Austin teaching hundreds of students every year. She encourages them to join ACBL and maintains their interest in the game for the long-term. She also writes her own bridge newsletter titled "The Future Life Master" which can be found at www.bridgecenteraustin.com on the Newcomer/Novice Information page. The following is her account of some of the interesting activities she has going on with her students.

"Austin bridge has a rosy future, due in part to the strong influx of new players. The Bridge Center of Aus-

tin offers limited games every day of the week. One of most successful and interesting limited games is held on Monday mornings. We have nicknamed this game "One is Enough." Everyone is invited to play but no two Life Masters may be partners. This game typically runs about ten tables and is comprised of a fascinating mix of players. We have expert players playing against those with just a few masterpoints. Although some of the partnerships have the LM component, many do not. The grace with which the expert players handle the occasional novice question is something that makes this game very special. Players of disparate bridge experience who would never have interacted are now arranging occa-

sional games. Novices are getting to know the advanced players as people, not sharks, thereby making their eventual move to an Open game more appealing.

At the start of each Monday game we have a brief "warm-up" session using two of Eddie Kantar's excellent "Thinking Bridge" hands. After being given the recommended contract and lead, the hand is played and we review the Kantar analysis. Some students from our Beginning Bridge course have been sitting in for the play/analysis and then repairing to the far end of the room where they work on hands from their textbook. Several weeks ago during the play portion of the Kantar hands, the student table burst into laughter

as they realized they were playing the hand without a dummy. After the laughter subsided and they made the move to the other end of the room, the students proceeded to play and analyze eight hands in three hours. The meticulousness with which they studied the bidding and play of those hands indicates that we have some excellent players in the making. Cheers to Wendy Albrecht, Sue Barbero, Anne Hester, Charlotte Hunter, Thomas Hughes, Deb McNeese, Patricia Moore, D.J. Mullinix, Pravina Pjani, Ruben Ramirez, Judy Willcott, and especially, Tracy Bruce. She is the dedicated student who organized the study sessions. Tracy even arranged online practice sessions for students in our class who were unable to par-

ticipate during the day. Remember these names, folks, you will be seeing them much more."

No doubt we will. Thank you, Laura, for your dedication to the game and to your players!

To all teachers, new players and directors of newcomer games, please feel free to share your experiences, entertaining anecdotes and players you would like mentioned. I look forward to hearing from you.
Mercedes Barker
mercedes@bridgepermanbasin.com
www.bridgepermanbasin.com



Eddie Wold is #3 on the all-time ACBL list with over 57,000 masterpoints. A World Champion, he has won the Barry Crane Top 500 three times. He has won 15 National Championships and over 1000 Regionals.

Bob Morris has earned over 15,000 masterpoints in his career and is a perennial top 50 finisher in the Barry Crane Race. He is a 2-time National Champion and has captured over 200 Regionals. Formally trained as a high school teacher, he is comfortable teaching students of all levels.



DON'T DELAY!
The first 100 to sign up will SAVE \$200 per person!

For more information or to make your reservation, please call John Sobel at
Go Away Travel
 954-349-2800
 1-800-721-5927

www.BestBridgeAtSea.com
BestBridgeAtSea@GoAwayTrav.com



2013 Western Caribbean Bridge Cruise

Royal Caribbean's Mariner of the Seas

Round-Trip Galveston

January 20-27, 2013

featuring

Eddie Wold & Bob Morris

Bridge Highlights

Daily morning lectures and question & answer sessions with Eddie & Bob
 Daily afternoon & evening stratified games with masterpoints awarded
 Swiss Team and other special events scheduled
 Card playing area reserved exclusively for our group

DAY	9:30A-11:30A	1:30P-4:30P	7:30P-10:30P
Sunday	xxx	xxx	Game
Monday	Lecture	Game	Game
Tuesday	Lecture	Game	Game
Wednesday	Lecture	Game	Game
Thursday	Lecture	Game	Game
Friday	Lecture	Game	Game
Saturday	Lecture	Game	xxx

DAY	DATE	PORT	ARRIVE	DEPART
Sunday	20-Jan	Galveston	xxx	4:30 PM
Monday	21-Jan	Day at Sea	xxx	xxx
Tuesday	22-Jan	Cozumel	7:30 AM	4:00 PM
Wednesday	23-Jan	Grand Cayman	10:00 AM	6:00 PM
Thursday	24-Jan	Falmouth	8:00 AM	5:00 PM
Friday	25-Jan	Day at Sea	xxx	xxx
Saturday	26-Jan	Day at Sea	xxx	xxx
Sunday	27-Jan	Galveston	7:30 AM	xxx

GRATUITIES AND TRAVEL INSURANCE ARE INCLUDED

CAT	CABIN	SIZE	BALCONY	DECK	DOUBLE	SINGLE
GS	Grand Suite	390 sq ft	89 sq ft	10	\$2,075	\$3,350
JS	Junior Suite	299 sq ft	65 sq ft	10, 9	\$1,825	\$2,850
D2	Superior Outside	206 sq ft	42 sq ft	9, 8, 7	\$1,575	\$2,350
E2	Deluxe Outside	184 sq ft	46 sq ft	7, 6	\$1,500	\$2,200
H	Outside	161 sq ft	none	2	\$1,350	\$1,950
M	Inside	158 sq ft	none	9	\$1,200	\$1,700

Prices are per person, cruise only, based on either single or double occupancy and include the following: Port charges and fees of \$275.00 per person, gratuities, travel insurance and all of our bridge activities. Non-bridge participants may deduct \$150. Fuel surcharge (if any) is additional. All categories are subject to availability and all prices and offers are subject to change. A deposit of \$500 (\$1,000 for GS) is required to reserve a cabin and is fully refundable until the final payment date of October 26, 2012. Cancellations made after this date are subject to penalties. We reserve the right to provide a lecturer of equal caliber in the event of illness or other circumstances beyond our control. In order to participate, your reservation must be made with Go Away Travel.